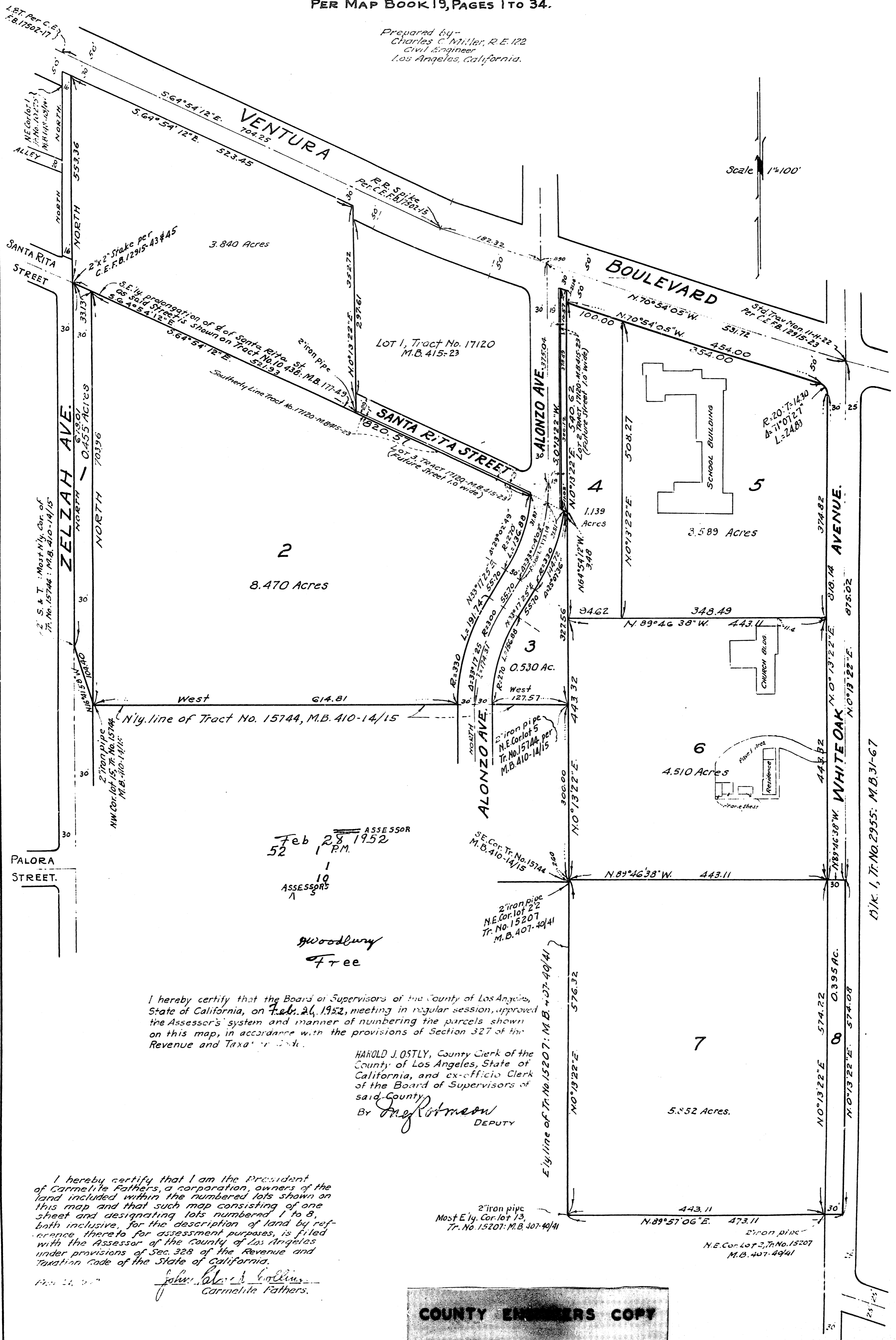


MAP OF A PORTION OF LOT 1100, TRACT NO. 1000,
IN THE CITY OF LOS ANGELES, CALIFORNIA
PER MAP BOOK 19, PAGES 1 TO 34.

Prepared by
Charles C. Miller, R.E. 122
Civil Engineer
Los Angeles, California.



ASSESSOR
Feb 28 1952
52 1 P.M.
10
ASSESSORS
1

Woodbury
Free

I hereby certify that the Board of Supervisors of the County of Los Angeles, State of California, on Feb. 26, 1952, meeting in regular session, approved the Assessor's system and manner of numbering the parcels shown on this map, in accordance with the provisions of Section 327 of the Revenue and Taxation Code.

HAROLD J. OSTLY, County Clerk of the County of Los Angeles, State of California, and ex-officio Clerk of the Board of Supervisors of said County.

By *John Roseman* DEPUTY

I hereby certify that I am the President of Carmelite Fathers, a corporation, owners of the land included within the numbered lots shown on this map and that such map consisting of one sheet and designating lots numbered 1 to 8, both inclusive, for the description of land by reference thereto for assessment purposes, is filed with the Assessor of the County of Los Angeles under provisions of Sec. 328 of the Revenue and Taxation Code of the State of California.

John Roseman
Carmelite Fathers.

COUNTY ENGINEERS COPY