

I hereby certify that I am a Registered Civil Engineer of the State of California, that this map consisting of one sheet correctly represents a survey made under my supervision in December, 1950, that this survey is true and complete as shown, that the monuments shown hereon are in place; that their position and character are correctly shown and that such monuments are sufficient to enable survey to be retraced.

J. A. Jordan
R.E. 2244

I hereby certify that the Board of Supervisors of the County of Los Angeles, State of California on Feb. 17, 1953 meeting in regular session, approved the assessors system and manner of numbering the parcels shown on this map, in accordance with the provisions of Section 327 of the Revenue and Taxation Code.

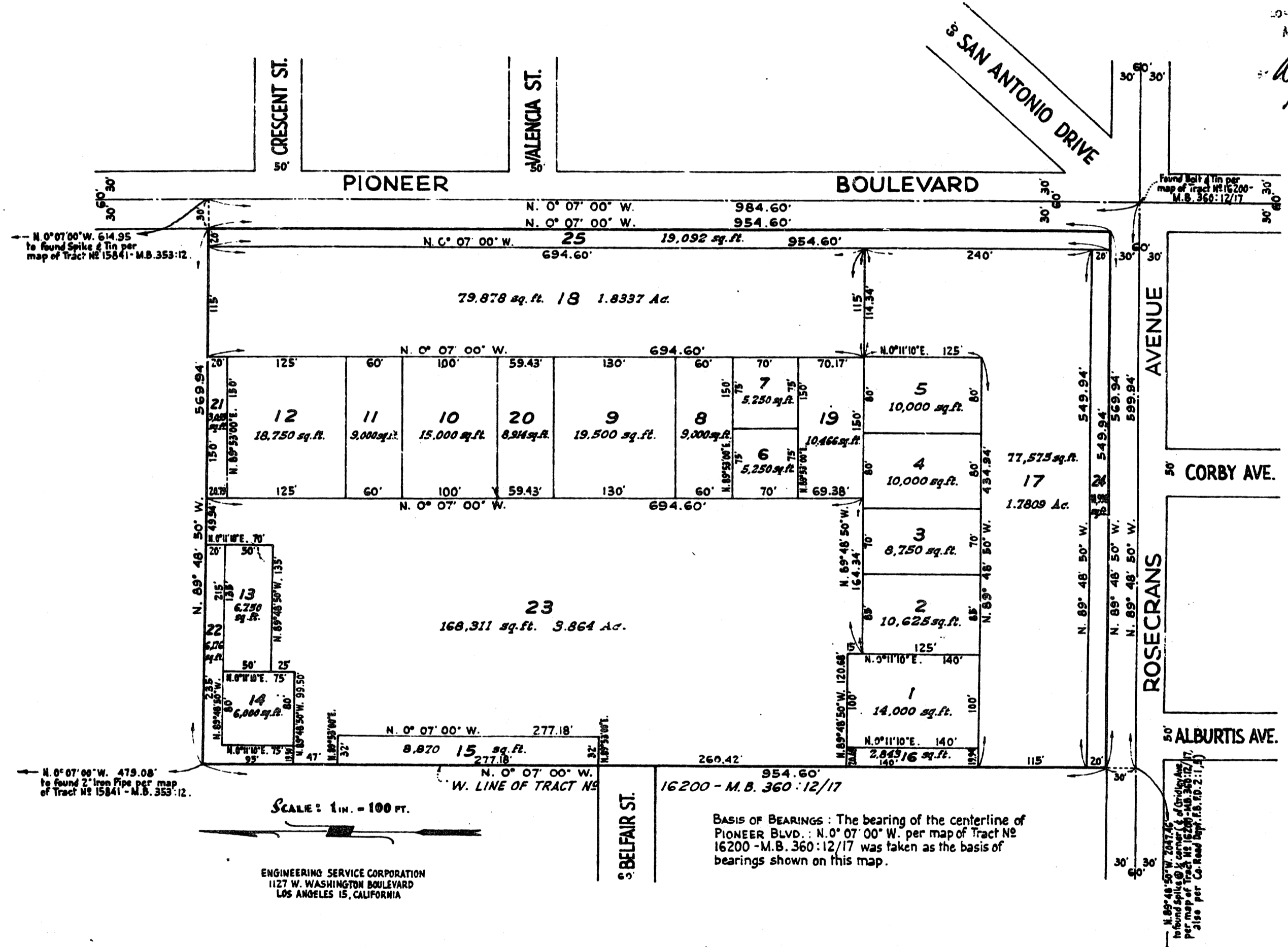
Harold J. Ostley, County Clerk of the County of Los Angeles, State of California, and ex-officio clerk of the Board of Supervisors of said County.

by *Inez Johnson*
Deputy

Examined February 11, 1953
WILLIAM J. FOX, County Surveyor
By *Harold A. Harris*
Deputy

L.A.C.A. 63
SURVEY OF
PART OF S.E. 1/4 SECTION 13, T.3 S., R.12 W.,
RANCHO LOS COYOTES per P. 1:493 & 494
IN UNINCORPORATED TERRITORY OF THE COUNTY OF LOS ANGELES, CALIFORNIA
for: PACIFIC MUTUAL LIFE INSURANCE COMPANY (Owner)

RECORDED
AT REQUEST OF ASSESSOR
Feb. 19, 1953
58 MIN
PAGE 1 Pm
N BOOK 1
PAGE 11
DE ASSESSOR CLERK
REC'D
LOS ANGELES COUNTY CLERK
MADE S. HEATY
COUNTY REC'D
W. K. Taylor
DEPUTY



ENGINEERING SERVICE CORPORATION
1127 W. WASHINGTON BOULEVARD
LOS ANGELES 15, CALIFORNIA

COUNTY ENGINEERS COPY