

I hereby certify that the Board of Supervisors of the County of Los Angeles, State of California, on December 22, 1953 meeting in regular session, approved the Assessor's system and manner of numbering the parcels shown on this map, in accordance with the provisions of Section 327 of Revenue and Taxation Code.

HAROLD J. OSTLY, County Clerk of the County of Los Angeles, State of California, and ex-officio clerk of the Board of Supervisors of said County.

By May Johnson
Deputy

Dec 24, 1953
8 AM
17



L. Walter

SCALE 1" = 100'

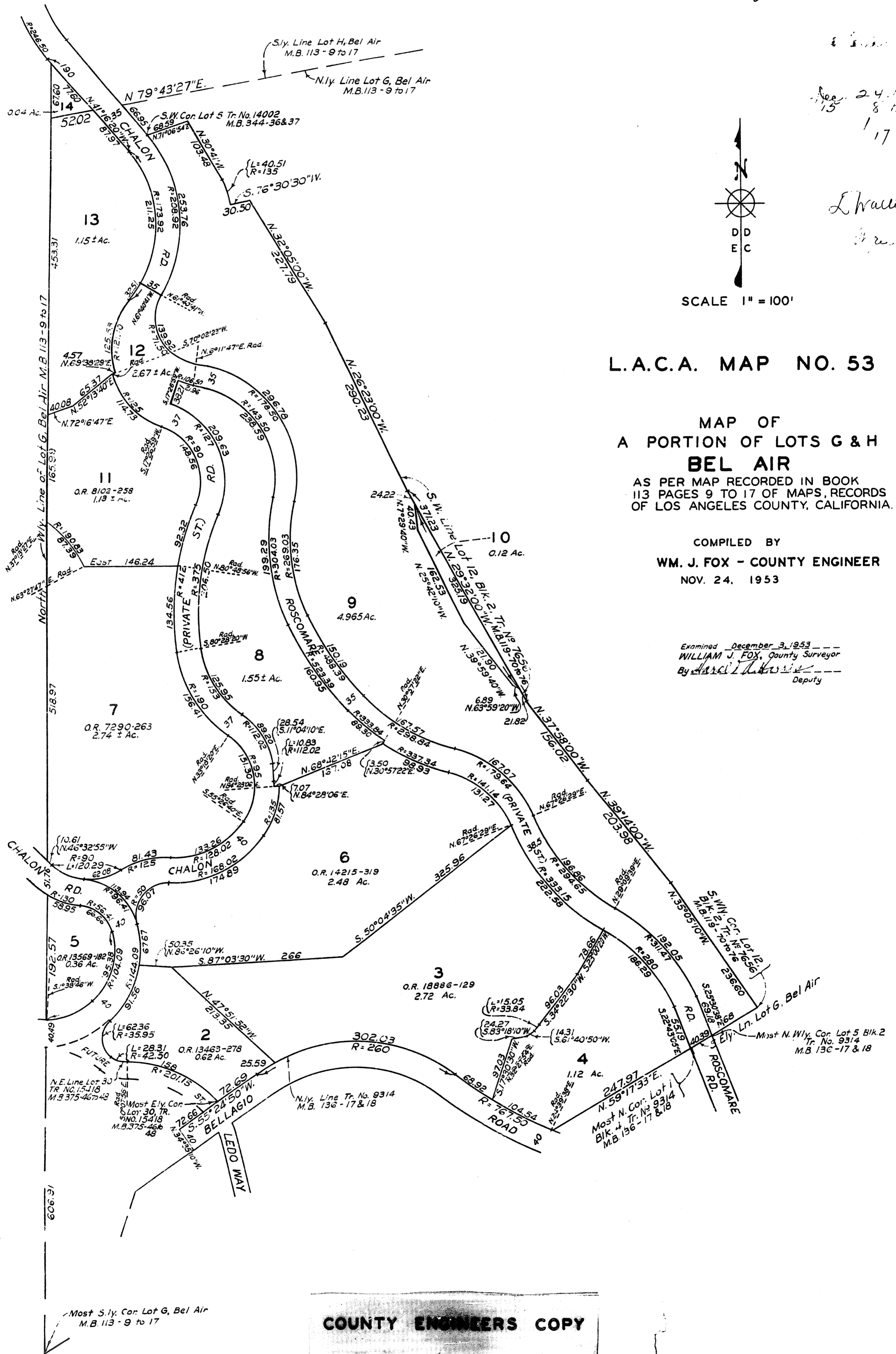
L.A.C.A. MAP NO. 53

MAP OF A PORTION OF LOTS G & H BEL AIR

AS PER MAP RECORDED IN BOOK
113 PAGES 9 TO 17 OF MAPS, RECORDS
OF LOS ANGELES COUNTY, CALIFORNIA.

COMPILED BY
WM. J. FOX - COUNTY ENGINEER
NOV. 24, 1953

Examined December 3, 1953 ---
WILLIAM J. FOX, County Surveyor
By Harold J. Ostly Deputy

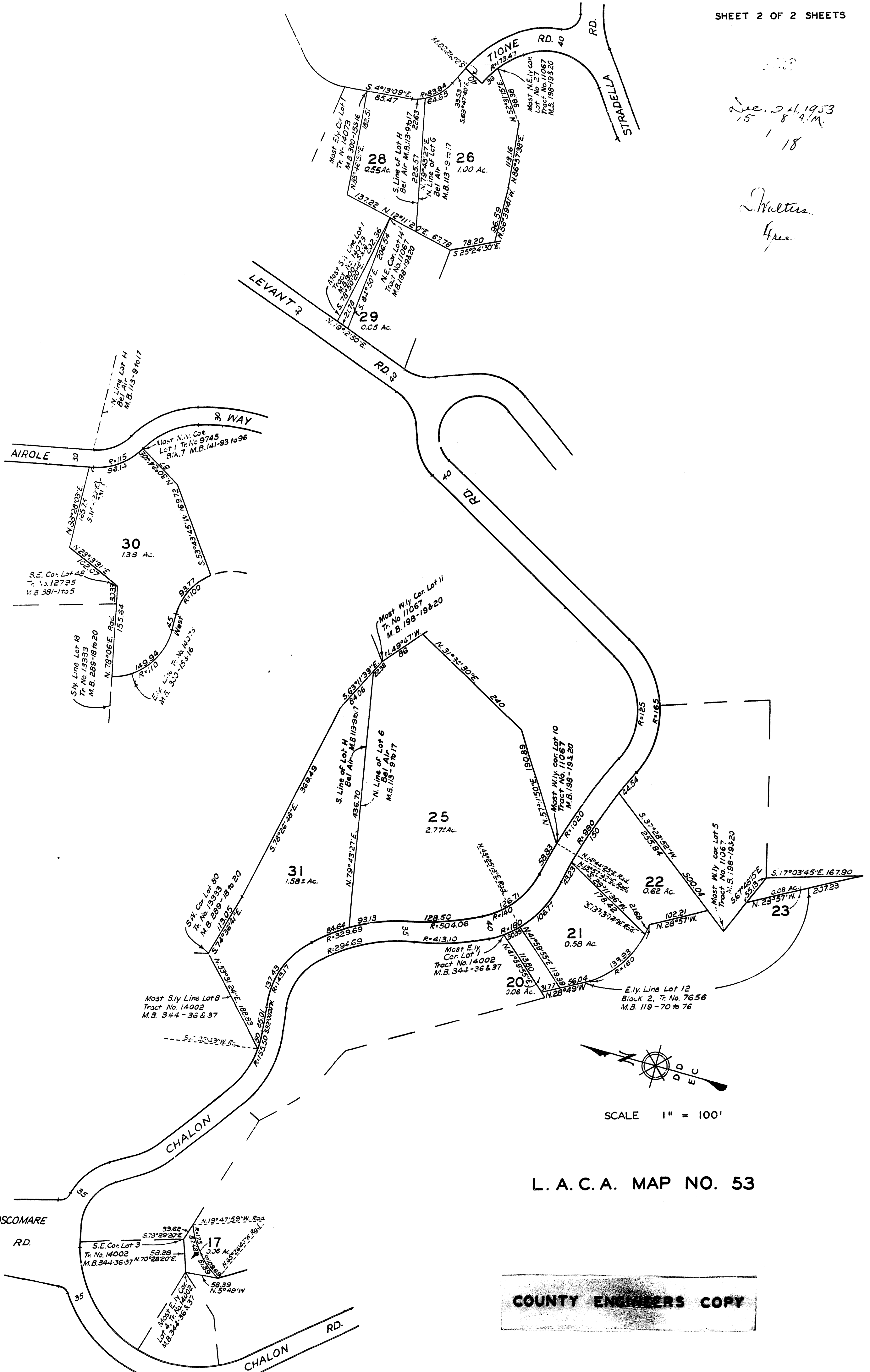


COUNTY ENGINEERS COPY

Rec. 24, 1953
15 8 A.M.

18

L. Walters
Free



L. A. C. A. MAP NO. 53

COUNTY ENGINEERS COPY