

L.A.C.A. NO. 65

FEB. 26, 1954
22 3 P.M.

19

Part of Sections 15 and 16, Township 1 North, Range 17 West, S.B.M.
in the County of Los Angeles, State of California.

I hereby certify that I am a Registered Engineer of the State of California and this map, prepared under my supervision, January 1954, was compiled from surveys made by me and filed in Record of Surveys Book 65, Pages 5, 20, and 21 and subsequent surveys made by others for conveyance of parcels.

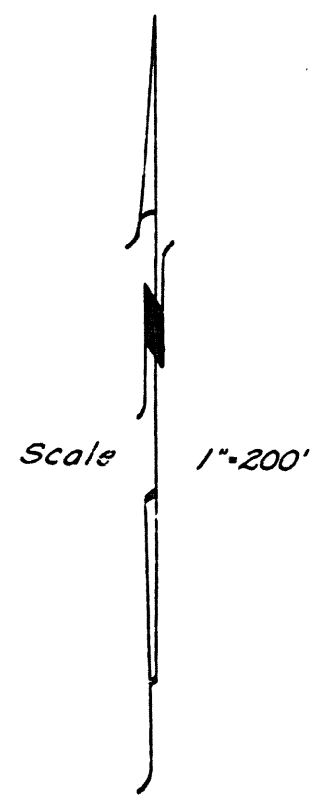
Charles C. Miller
Charles C. Miller, R.E. 122

I hereby certify that the Board of Supervisors of the County of Los Angeles, State of California on 23 Feb., 1954 meeting in regular session, approved the assessor's system and manner of numbering the parcels shown on this map, in accordance with the provisions of Section 327 of the Revenue and Taxation Code.

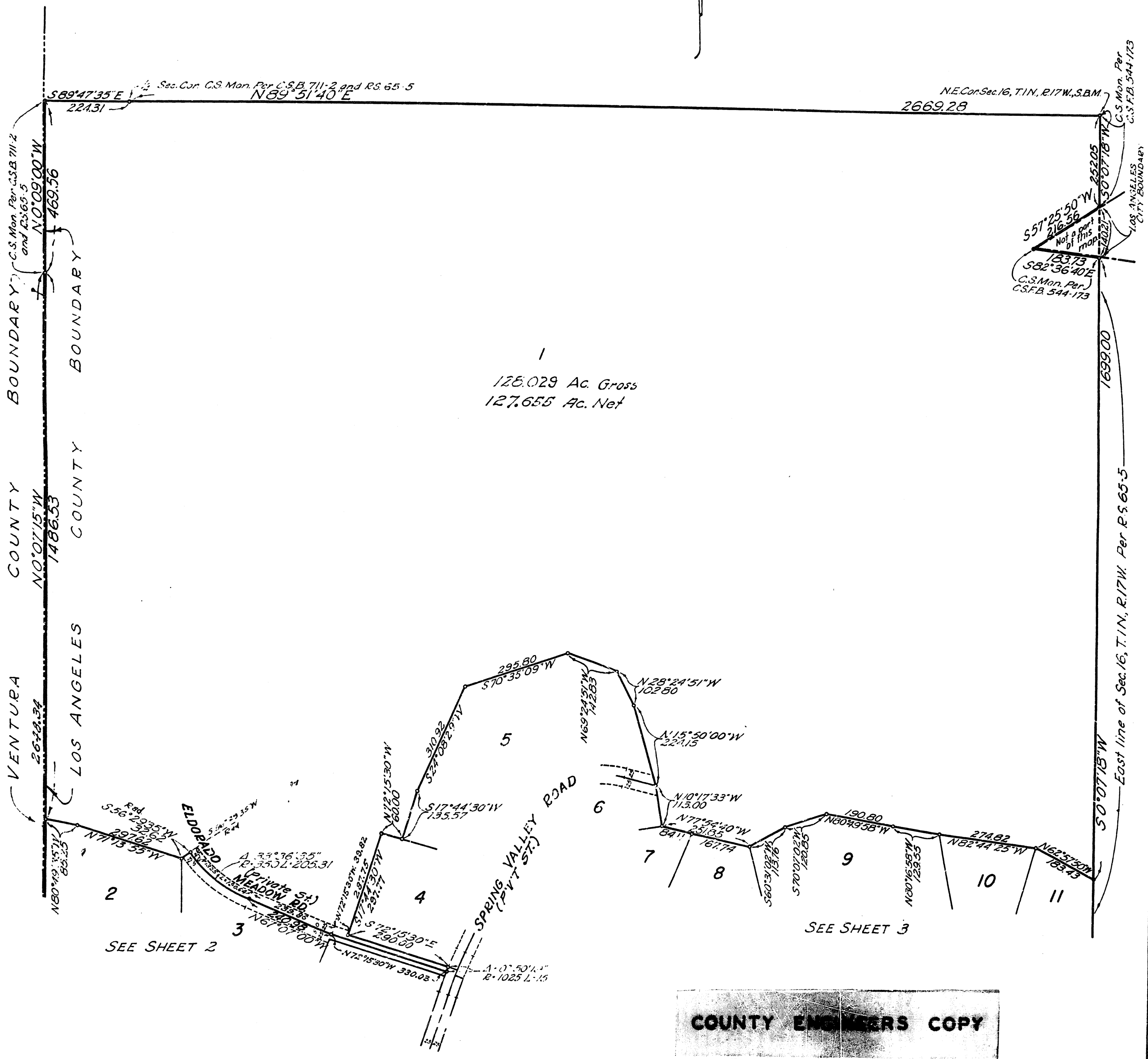
HAROLD J. OSTLEY, County Clerk of the County of Los Angeles, State of California, and ex-officio clerk of the Board of Supervisors of said County.

by *Henry Johnson*
Deputy

Examined February 26, 1954
WILLIAM J. FOX, County Surveyor
by *Harold J. Harris*
Deputy



Note: All areas shown hereon are net unless otherwise noted.



L.A.C.A. NO. 65

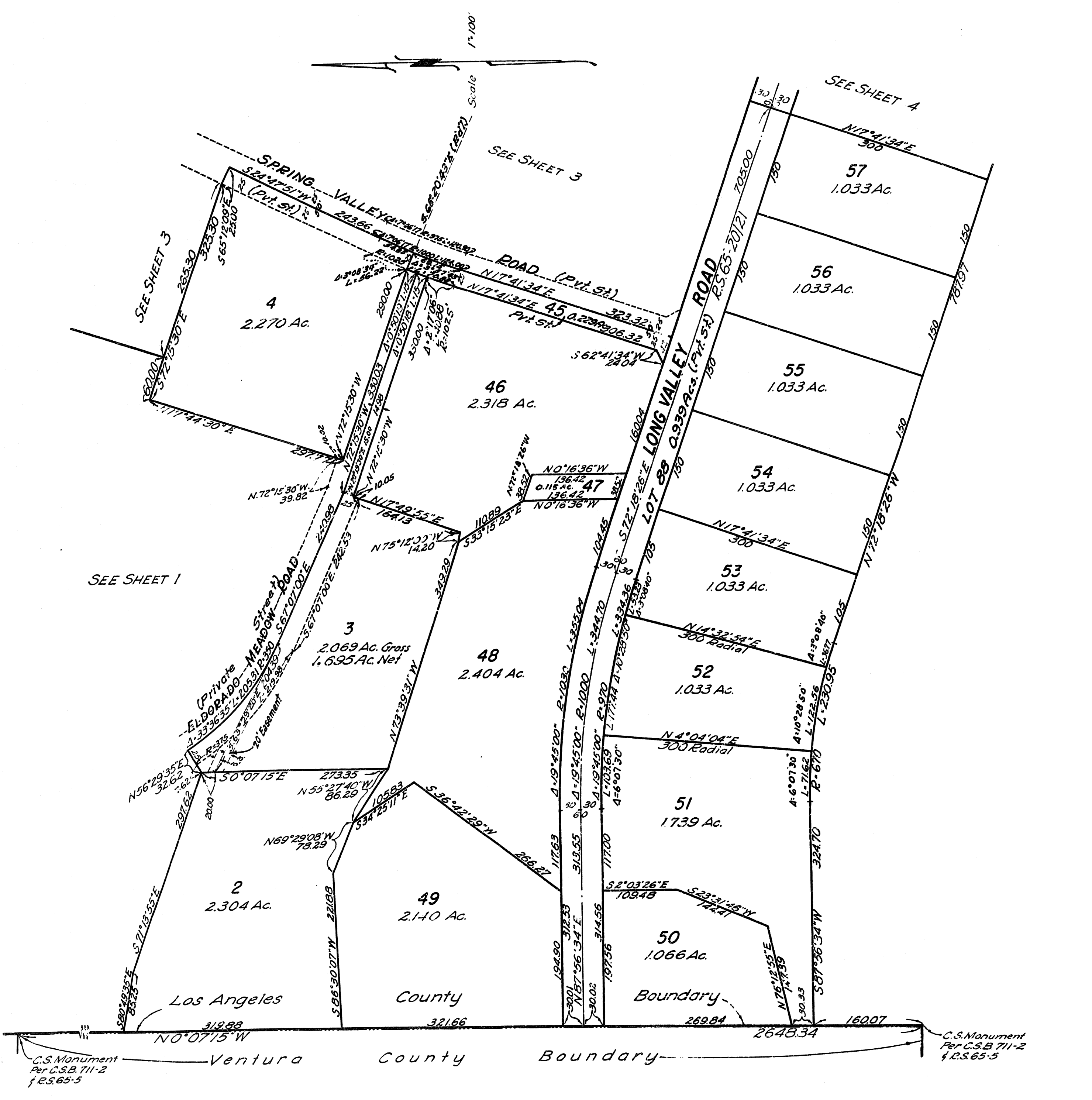
FEB. 26, 1954
22 3P.M.

1
20

S. Holman

Free

COUNTY ENGINEERS COPY



C.S. Monument
Per C.S.B. 711-2
P.S. 65-5

C.S. Monument
Per C.S.B. 711-2
P.S. 65-5



L.A.C.A. NO. 65

FEB. 26, 1954
22 3 P.M.
1
21

Shoun
FREE

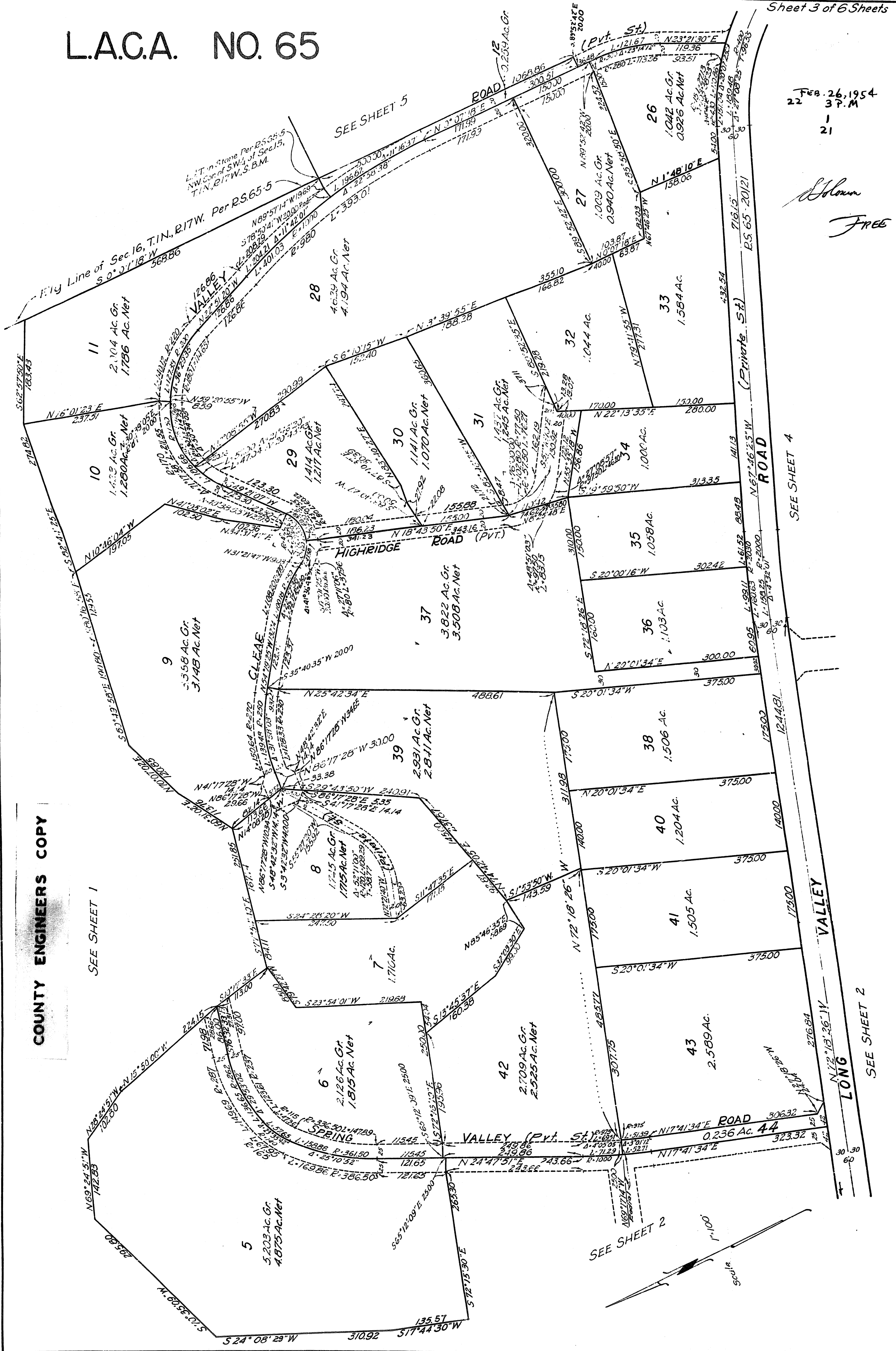
COUNTY ENGINEERS COPY

SEE SHEET 1

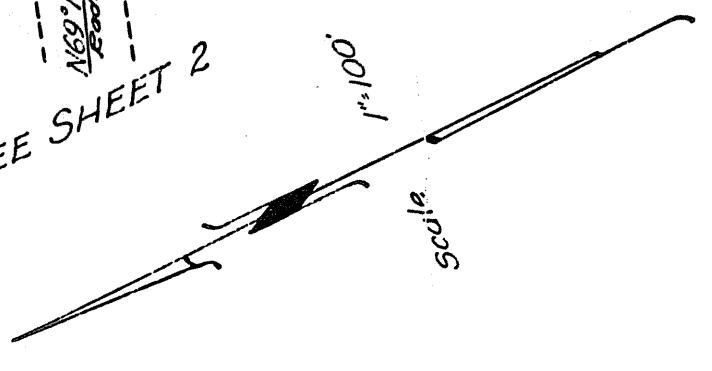
SEE SHEET 5

SEE SHEET 4

SEE SHEET 2



SEE SHEET 2



L.A.C.A. NO. 65

FEB. 26, 1954
22 3 P.M.

1
22

Blumen
Free

SEE SHEET 6

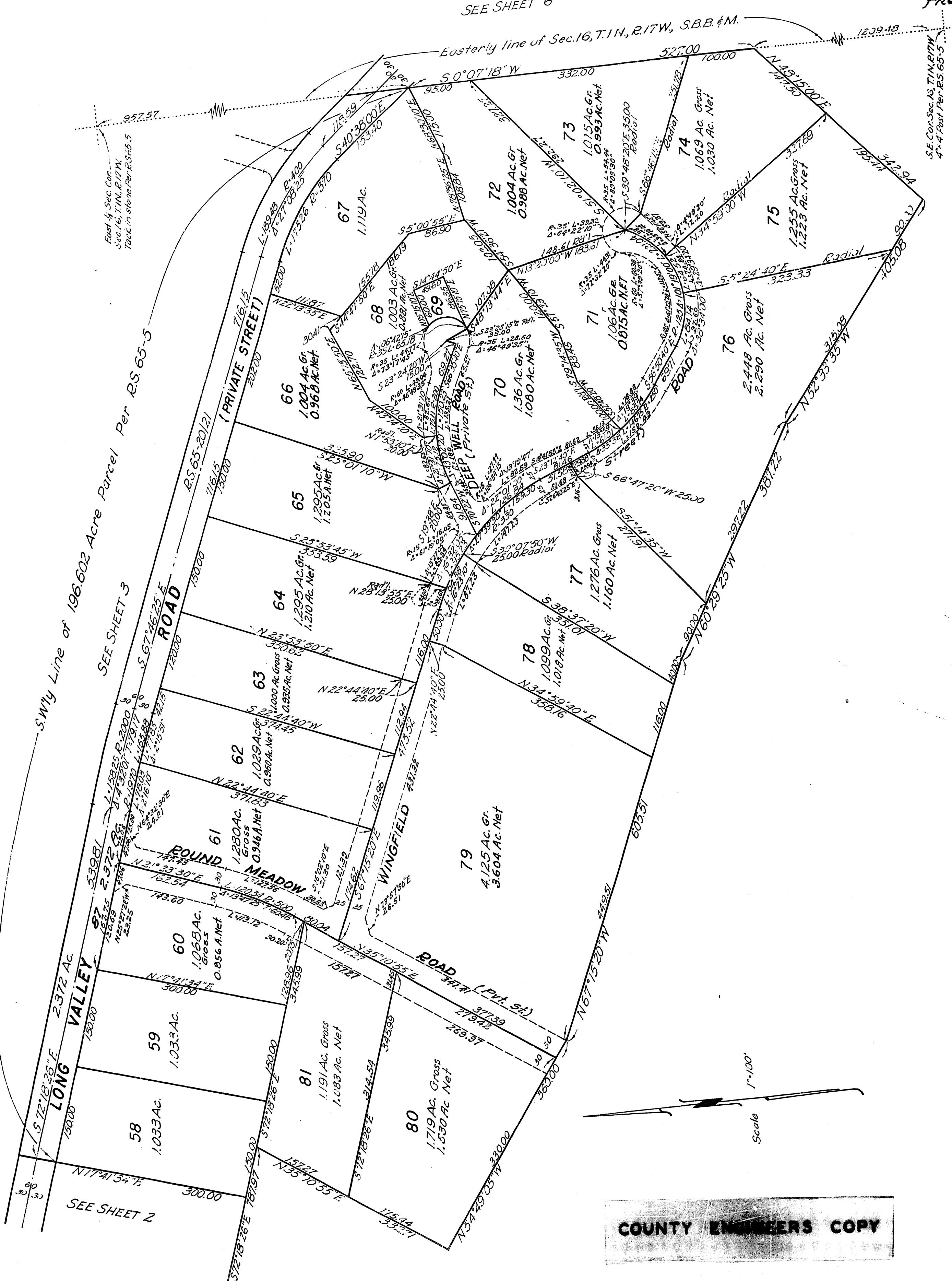
Easterly line of Sec. 16, T. 1 N., R. 17 W., S.B.B. & M.

East 1/4 Sec. Cor.
Sec. 16, T. 1 N., R. 17 W.
Text in stone Per. R.S. 65-5

S.E. Cor. Sec. 15, T. 1 N., R. 17 W.
4" x 4" Post Per. R.S. 65-5

SW 1/4 Line of 196.602 Acre Parcel Per R.S. 65-5
SEE SHEET 3

SEE SHEET 2

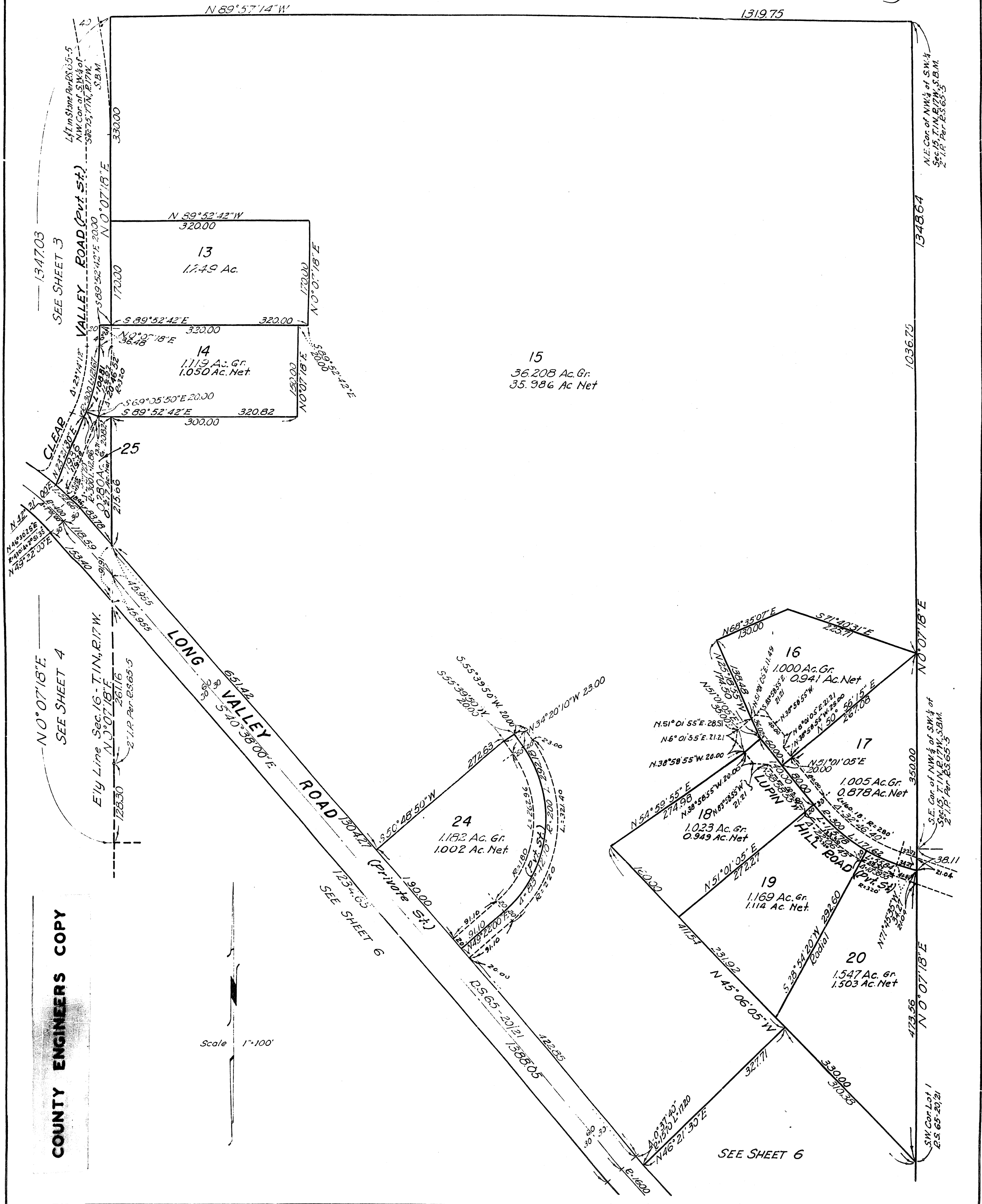


COUNTY ENGINEERS COPY

L.A.C.A. NO. 65

Feb 26, 1954
22 37. M.
1
23

Blower
Free



COUNTY ENGINEERS COPY

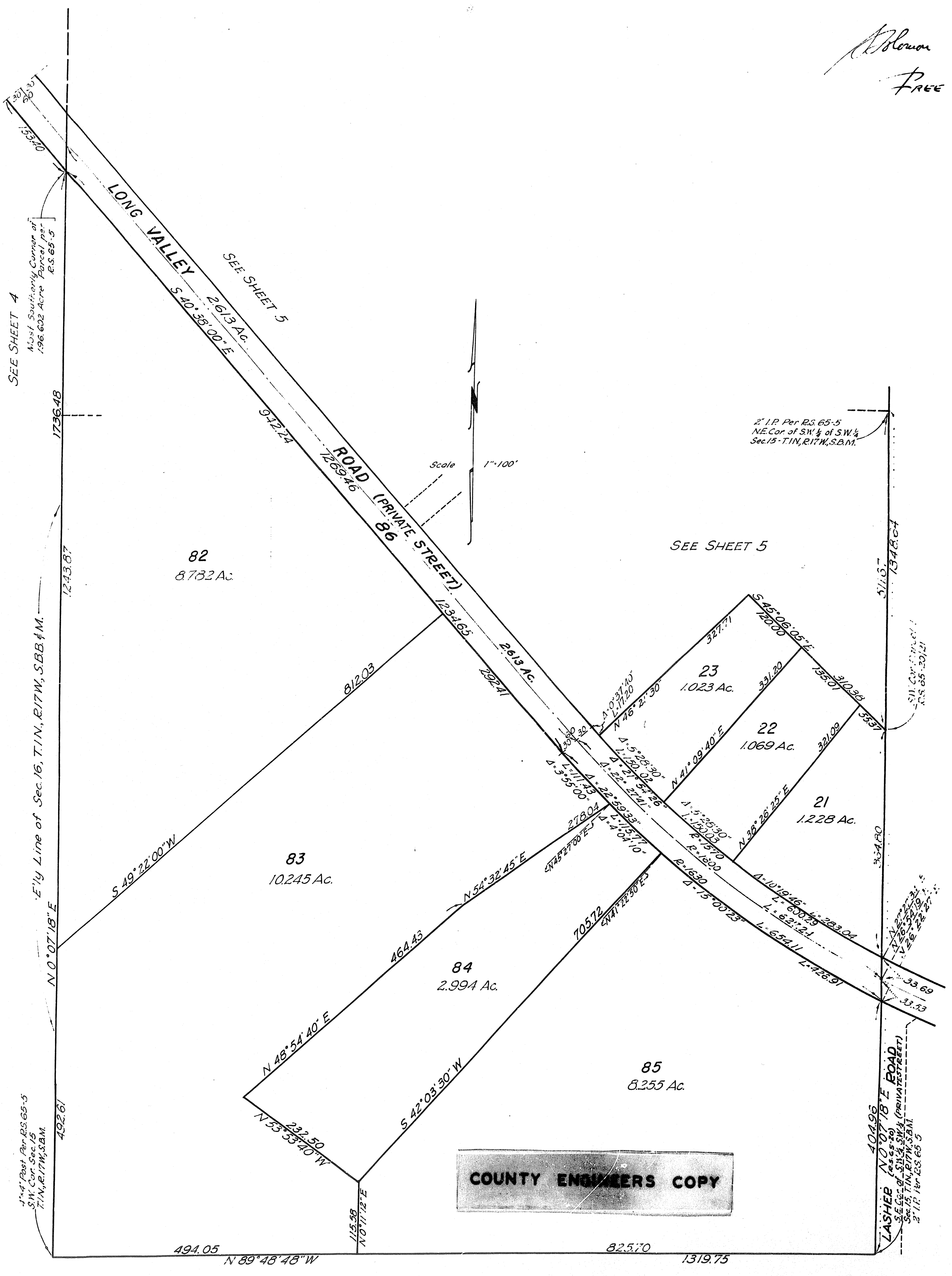
Scale 1"=100'

SEE SHEET 6

L.A.C.A. NO. 65

FEB. 26, 1954
22 37.M
1
24

Blouin
FREE



COUNTY ENGINEERS COPY

LASHER
NO 07 18 E ROAD
S.E. Cor. of SW 1/4 SW 1/4 (PRIVATE STREET)
Sec. 15, T.1N, R.17W, S.B.M.
2" I.P. Per R.S. 65-5