

L. A. C. A No. 66
 MAP OF A PORTION
 OF
 SEC. 28 - T-1-S-R-12-W-5.B.M.

CONSISTING OF
 2127 ONE SHEET

IN THE CITY OF MONTEREY PARK - LOS ANGELES COUNTY
 MARCH 1954
 MARIO C. QUIROS
 L.S. No. 2743

September 7, 1954
 26 9 A. M.

BASIS OF BEARINGS

The bearing N 51° 25' 48" E of the center line of Monterey Pass Road, shown as N 51° 15' 15" E in L.A. Co. Surv. Map No. B 200 was taken as basis of bearings for this map.

I hereby certify that I am a licensed Surveyor of the State of California, and that this map was prepared under my supervision, March 1954 from surveys made by me

Mario C. Quiros
 L.S. No. 2743

I hereby certify that the Board of Supervisors of the County of Los Angeles, State of California on August 31, 1954, meeting in regular session approved the Assessor's system and manner of numbering the parcels shown on this map, in accordance with the provisions of Section 327 of the Revenue and Taxation Code

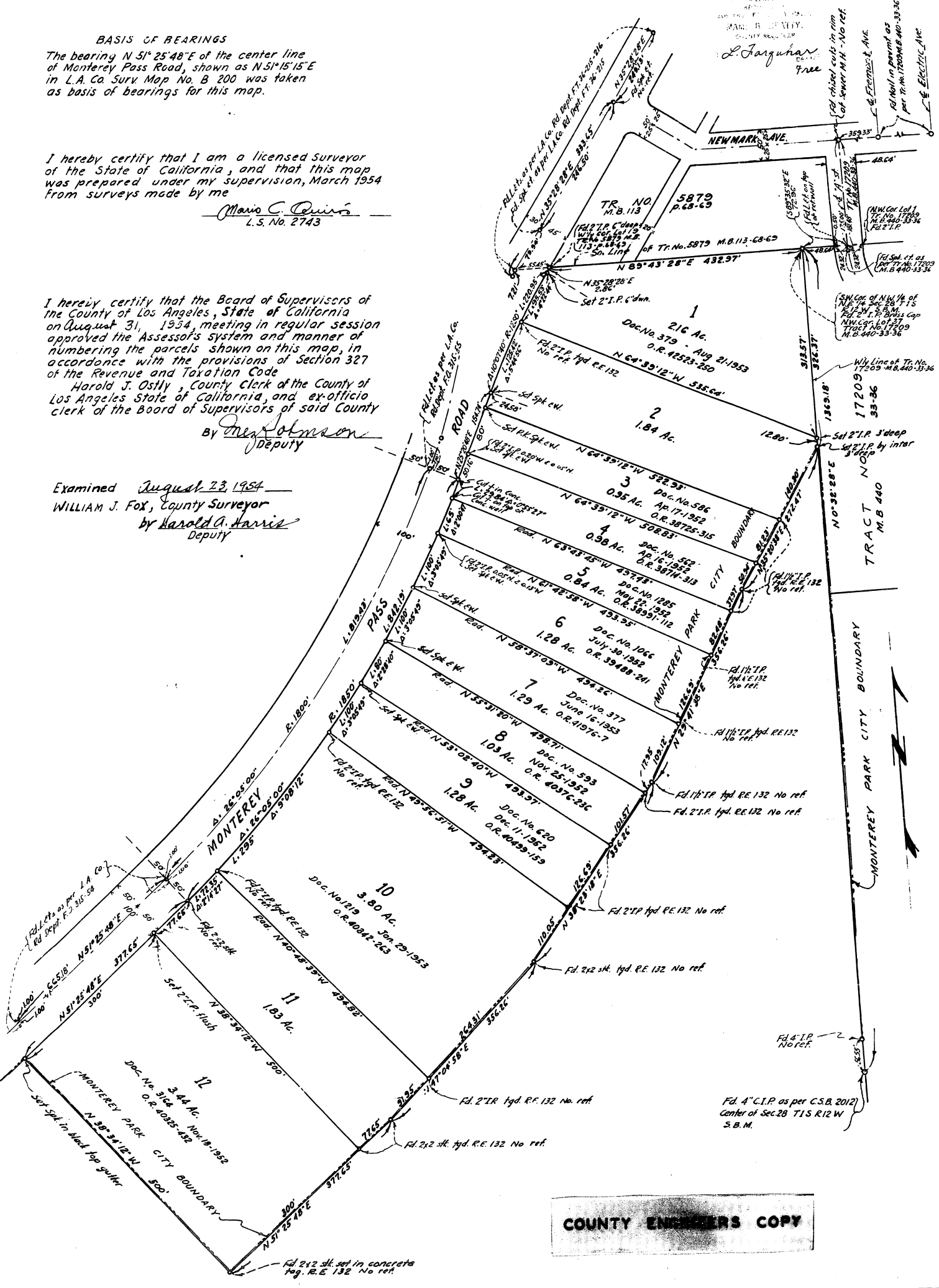
Harold J. Ostly, County Clerk of the County of Los Angeles State of California, and ex-officio clerk of the Board of Supervisors of said County

By Fred Johnson
 Deputy

Examined August 23, 1954

WILLIAM J. FOX, County Surveyor

by Harold G. Harris
 Deputy



COUNTY ENGINEERS COPY