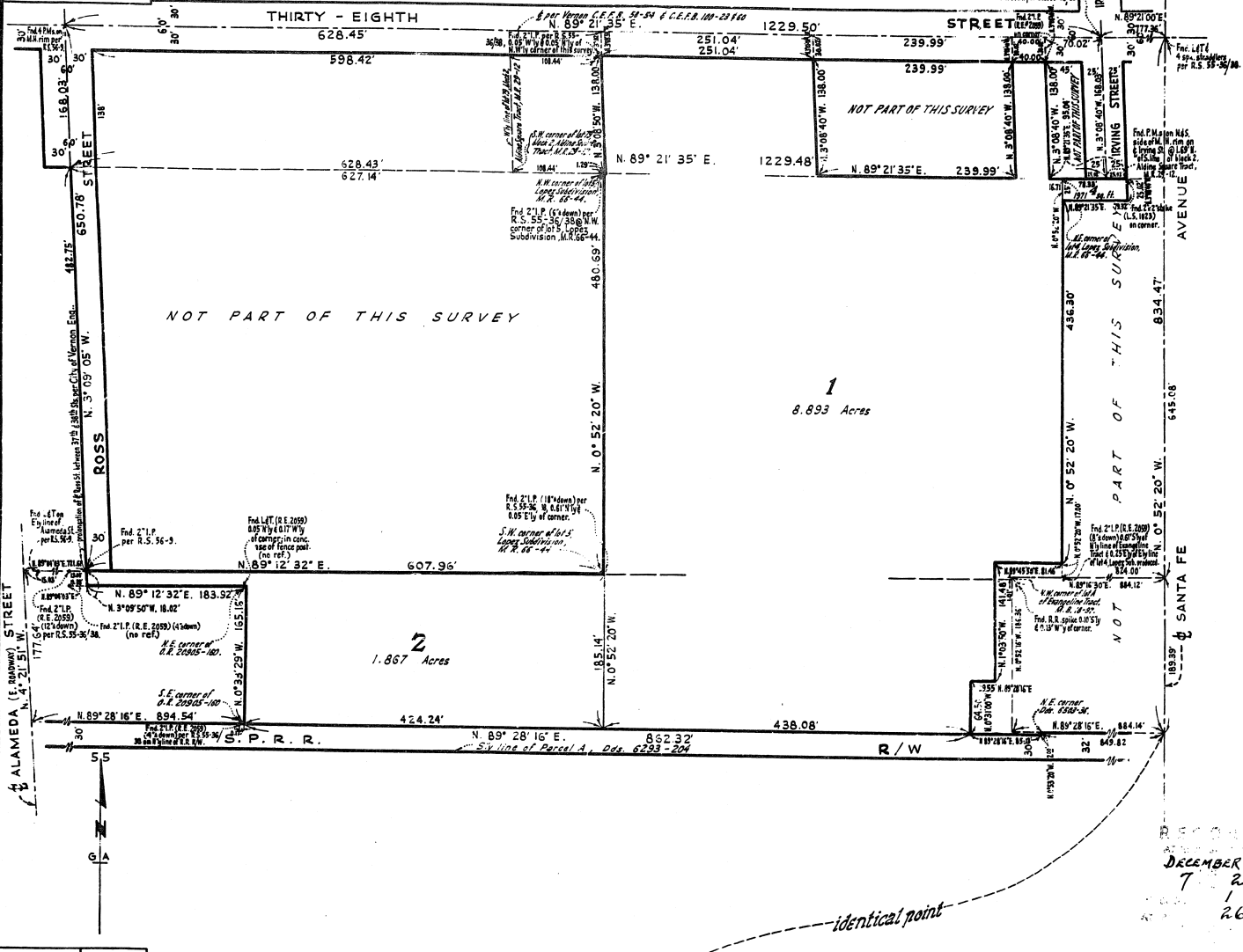
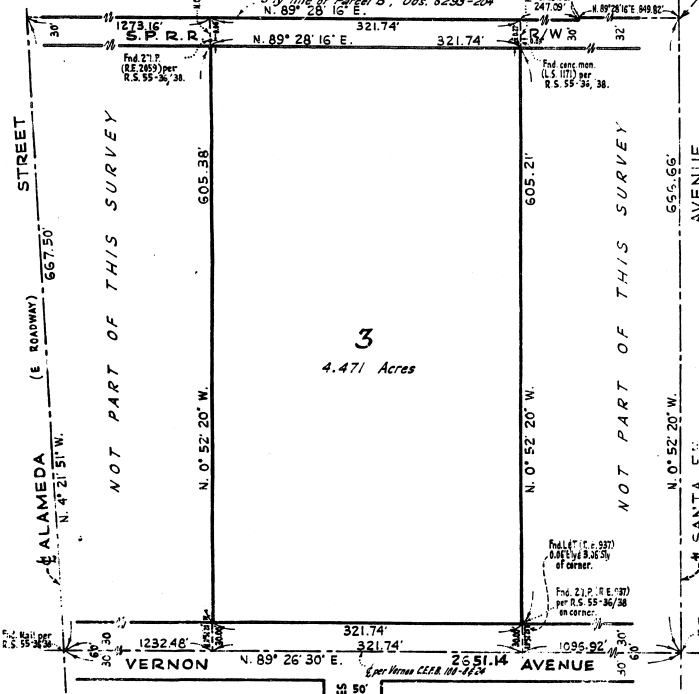


SCALE 1" = 100'



SCALE 1" = 100'



BASIS OF BEARINGS: The bearing of the  $\frac{1}{2}$  Vernon Avenue (N. 89° 26' 30" E.) per R.S. 35-36/38 was taken as the basis of bearings shown on this map.

COUNTY ENGINEERS COPY

I hereby certify that I am a registered Civil Engineer of the State of California, that this map consisting of 1 sheet correctly represents a survey made under my supervision in May, 1954, that this survey is true and complete as shown, that the monuments shown hereon are in place; that their position and character are correctly shown and that such monuments are sufficient to enable the survey to be retraced.

J. H. Jordan  
R.E. 2234

I hereby certify that the Board of Supervisors of the County of Los Angeles, State of California on Dec. 13, 1955 meeting in regular session, approved the assessors system and manner of numbering the parcels shown on this map in accordance with the provisions of section 327 of the Revenue and Taxation Code. Harold J. Ostly, County Clerk of the County of Los Angeles, State of California and ex-officio clerk of the Board of Supervisors of said County.

by Dwight Johnson  
Deputy

Examined November 30 1955  
John A. Lambie, County Engineer

by Harold G. Harris  
Deputy

L.A.C.A. No 67  
BEING A SURVEY OF  
LOTS 82-86 & 93 & PART OF LOT 81, BLK. 2, ALDINE SQUARE TRACT, M.R. 29-12,  
LOT 5 & PARTS OF LOT 3 & 4 OF LOPEZ SUBDIVISION, M.R. 66-44 &  
UNSUBDIVIDED FRACTIONS OF SECTIONS 9 & 10, T.2S., R.13W., S.B.M., per R.S. 55-36/38  
IN THE CITY OF VERNON