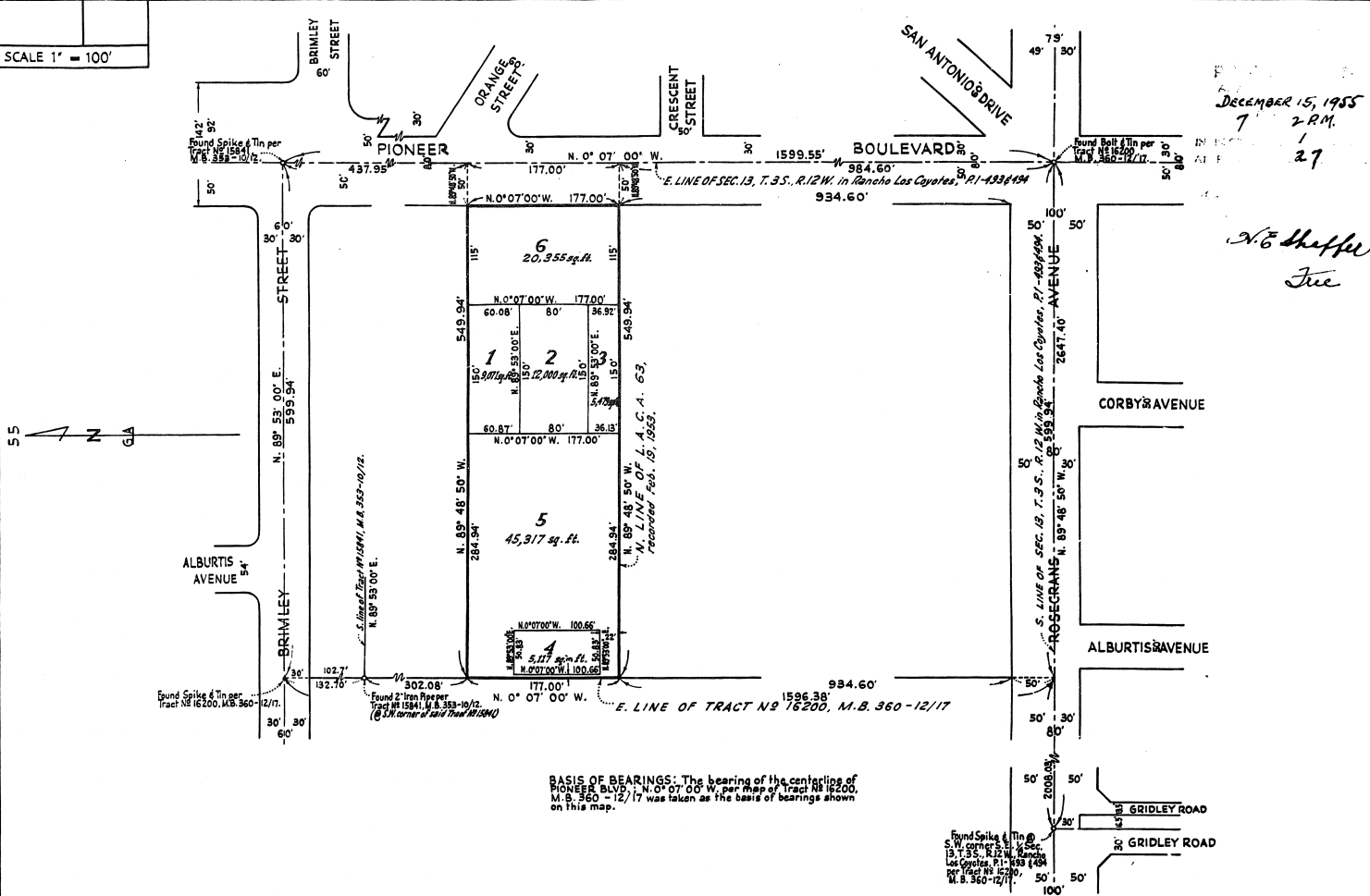


SCALE 1" = 100'

DECEMBER 15, 1955  
7 2 P.M.  
1  
27

*N.E. Shaffer  
True*



L.A.C.A. 68  
 SURVEY OF  
 PART OF S.E. 1/4 SECTION 13, T. 3 S., R. 12 W.,  
 RANCHO LOS COYOTES per P. 1-493 & 494  
 IN UNINCORPORATED TERRITORY OF THE COUNTY OF LOS ANGELES, CALIFORNIA  
 (OF: PACIFIC MUTUAL LIFE INSURANCE COMPANY (owner))

COUNTY ENGINEERS COPY

I hereby certify that I am a registered Civil Engineer of the State of California, that this map consisting of one sheet correctly represents a survey made under my supervision in December, 1955, that this survey is true and complete as shown, that the monuments shown hereon are in place; that their position and character are correctly shown and that such monuments are sufficient to enable survey to be retraced.

*T.A. Jordan*  
 R.E. 2244

I hereby certify that the Board of Supervisors of the County of Los Angeles, State of California on Nov. 13, 1955 meeting in regular session, approved the assessor's system and manner of numbering the parcels shown on this map, in accordance with the provisions of Section 327 of the Revenue and Taxation Code. Harold J. O'Neil, County Clerk of the County of Los Angeles, State of California, and ex-officio clerk of the Board of Supervisors of said County.

*Bruce Johnson*  
 Deputy

Examined November 30 1955  
 John A. Lambie, County Engineer

*Harold A. Harris*  
 Deputy

ENGINEERING SERVICE CORP.  
 3127 WEST WASHINGTON BOULEVARD  
 LOS ANGELES 15, CALIFORNIA

20th MAY 1955  
 W.O. 1224-31A