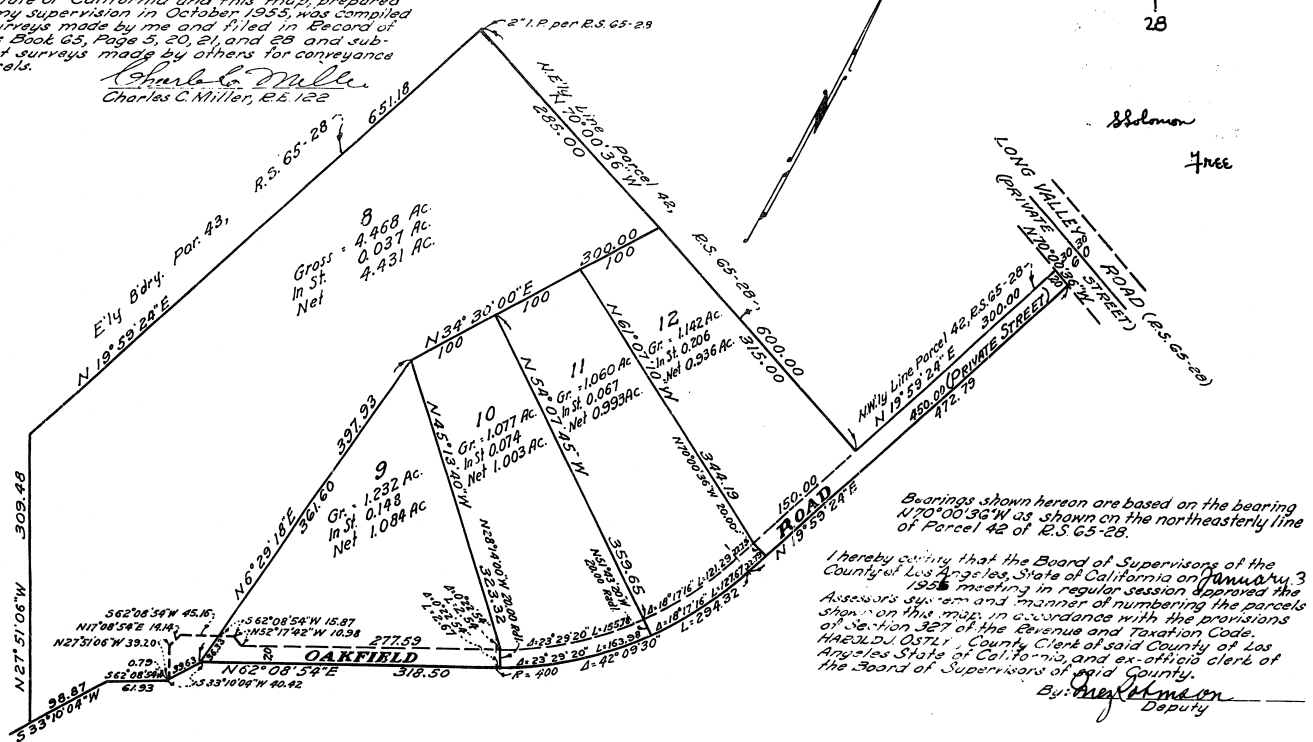


SCALE: 1" = 100'

JAN. 4, 1956
50 10 A.M.
1
28

I hereby certify that I am a Registered Engineer of the State of California and this map, prepared under my supervision in October 1955, was compiled from surveys made by me and filed in Record of Surveys Book 63, Page 5, 20, 21, and 22 and subsequent surveys made by others for conveyance of parcels.

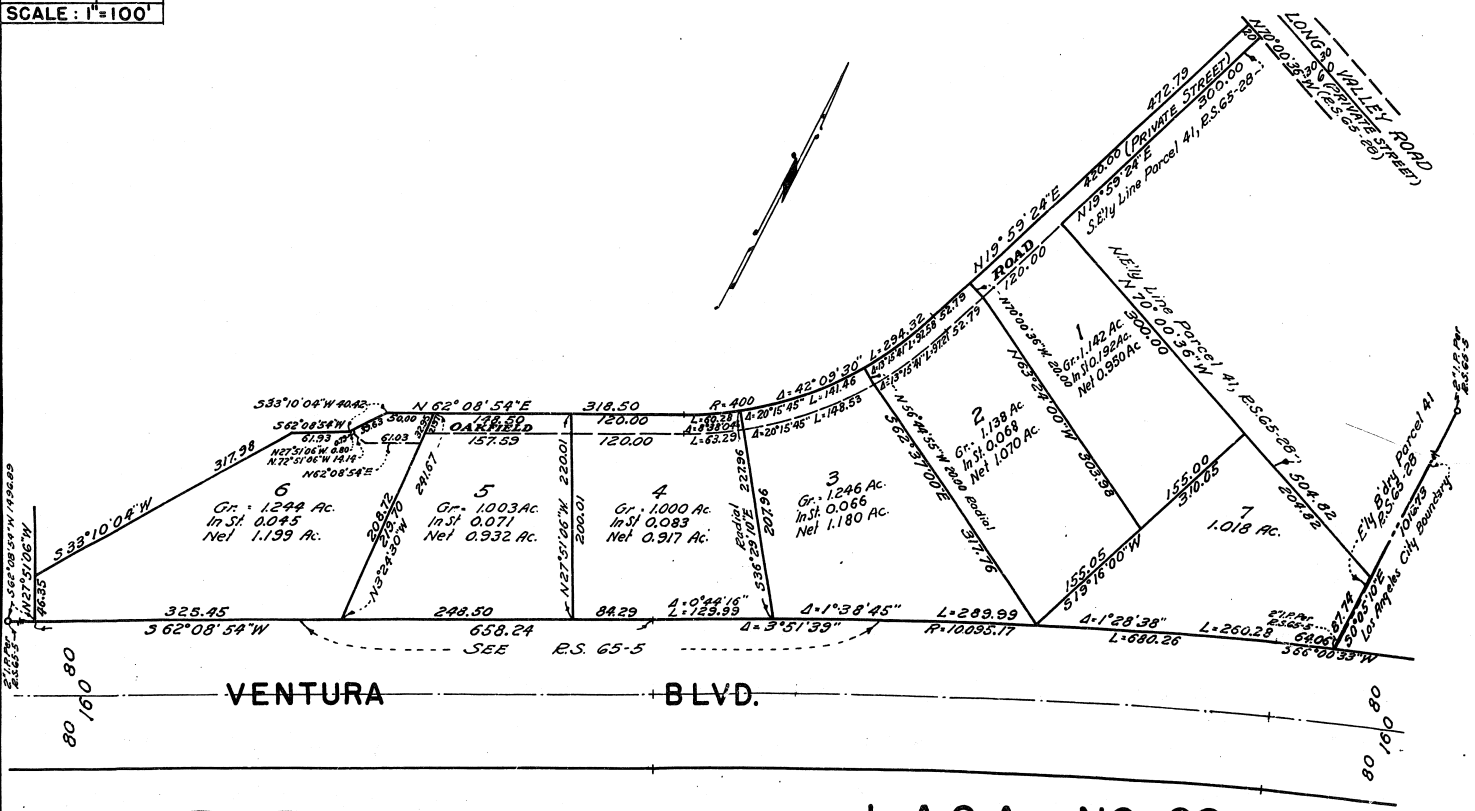
Charles C. Miller
Charles C. Miller, R.E. 122



L.A.C.A. NO. 69

Examined December 22, 1955
John A. Lambie, County Engineer
By: *John A. Lambie*
Deputy

SCALE: 1" = 100'



L.A.C.A. NO. 69

A PORTION OF PARCELS 41, 42, AND 43 OF R.S. 65-28

COUNTY ENGINEERS COPY