

JAN 4, 1956
50 10A.M.
1
29

Barlow
Free

I hereby certify that I am a Registered Engineer of the State of California and this map, prepared under my supervision, in October 1955, was compiled from surveys made by me and filed in Record of Surveys Book 65, Pages 5, 20 and 21 and subsequent surveys made by others for conveyance of parcels.

Charles C. Miller
Charles C. Miller R. E. 122

I hereby certify that the Board of Supervisors of the County of Los Angeles, State of California on January 3, 1956 meeting in regular session, approved the Assessor's system and manner of numbering the parcels shown on this map, in accordance with the provisions of Section 327 of the Revenue and Taxation Code.
HAROLD L. WILKINSON, County Clerk of the County of Los Angeles, State of California, an official clerk of the Board of Supervisors of said County.

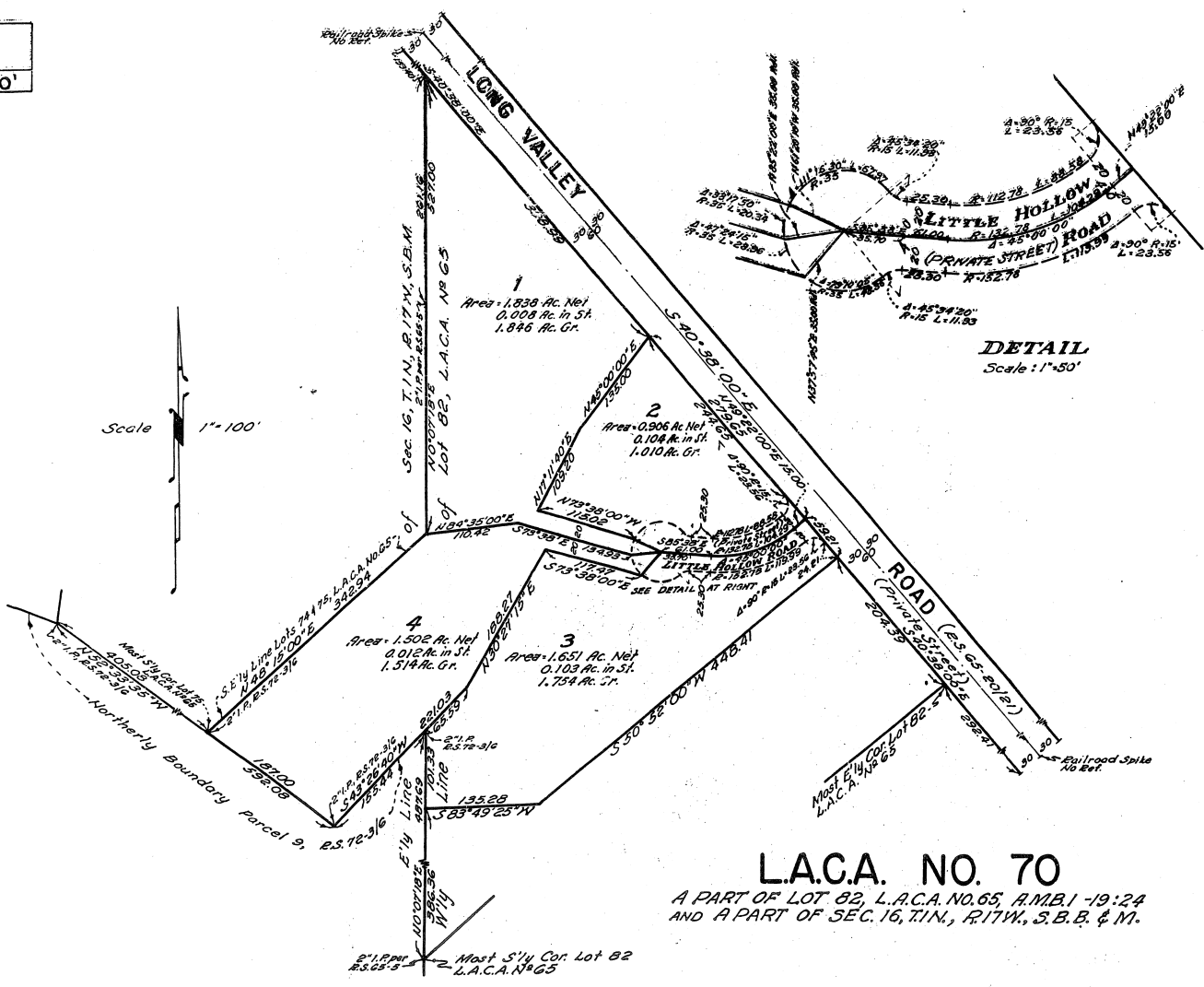
By: Dwight Johnson
Deputy

Examined 1955
John A. Lumbie, County Engineer
By: Al
Deputy

Bearings shown hereon are based on the bearing $N0^{\circ}07'18''E$ as shown on the westerly line of Lot 82, L.A.C.A. No. 65, A.M.B. 1-19-24.

COUNTY ENGINEERS COPY

SCALE: 1"=100'



LACA. NO. 70

A PART OF LOT 82, L.A.C.A. NO. 65, A.M.B. 1-19-24
AND A PART OF SEC. 16, T.1N., R.17W., S.B.B. & M.