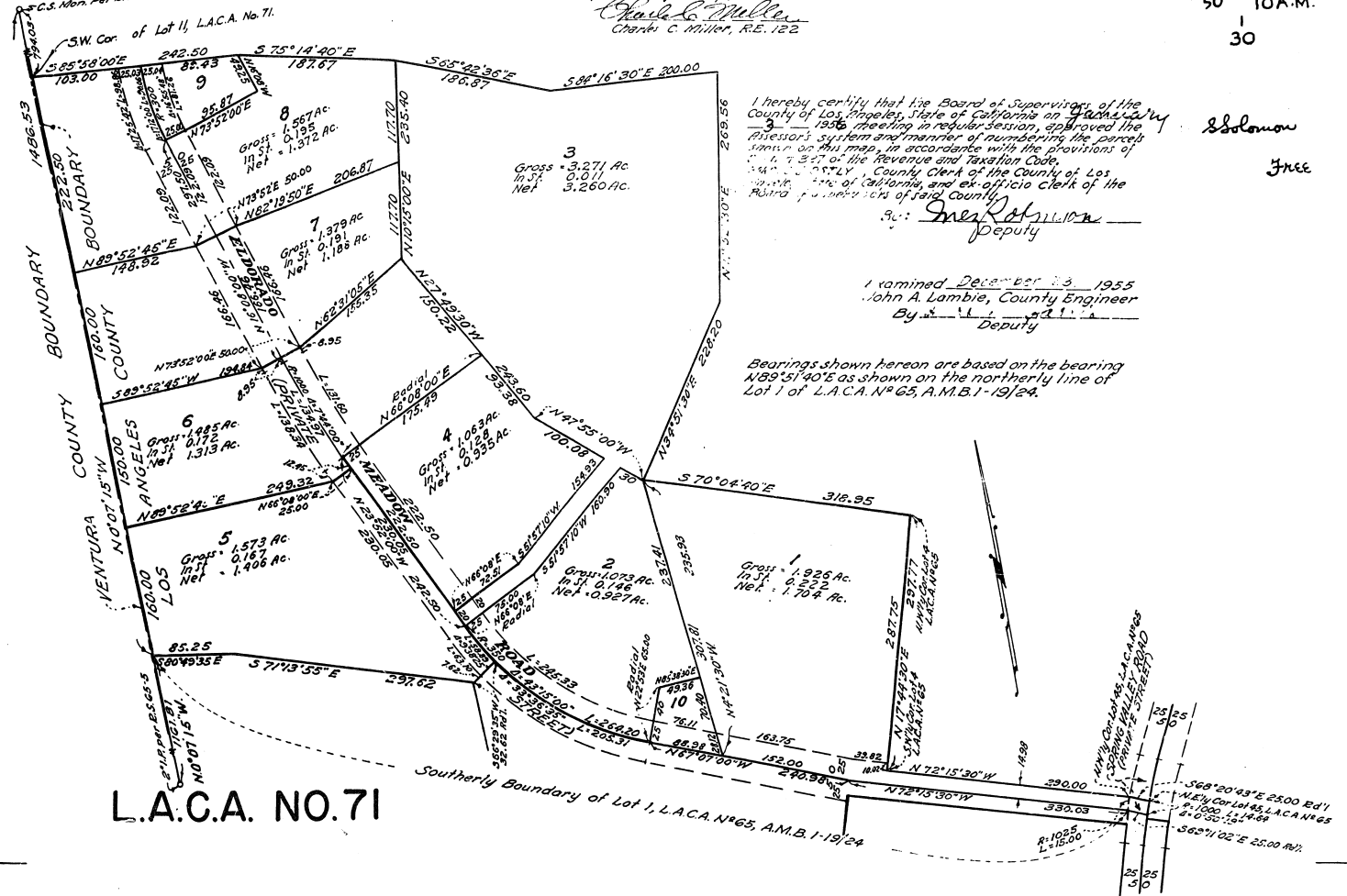


SCALE: 1"=100'

I hereby certify that I am a Registered Engineer of the State of California and this map, prepared under my supervision in October 1955, was compiled from surveys made by me and filed in Record of Surveys Book 65, Pages 5, 20 and 21 and subsequent surveys made by others for conveyance of parcels.

Charles C. Miller
Charles C. Miller, R.E. 122

JAN. 4, 1956
50 10A.M.
1
30



I hereby certify that the Board of Supervisors of the County of Los Angeles, State of California on January 3, 1956 meeting in regular session, approved the Prioror's system and manner of numbering the parcels shown on this map, in accordance with the provisions of Section 14757 of the Revenue and Taxation Code.

Inez R. Wilson
Deputy

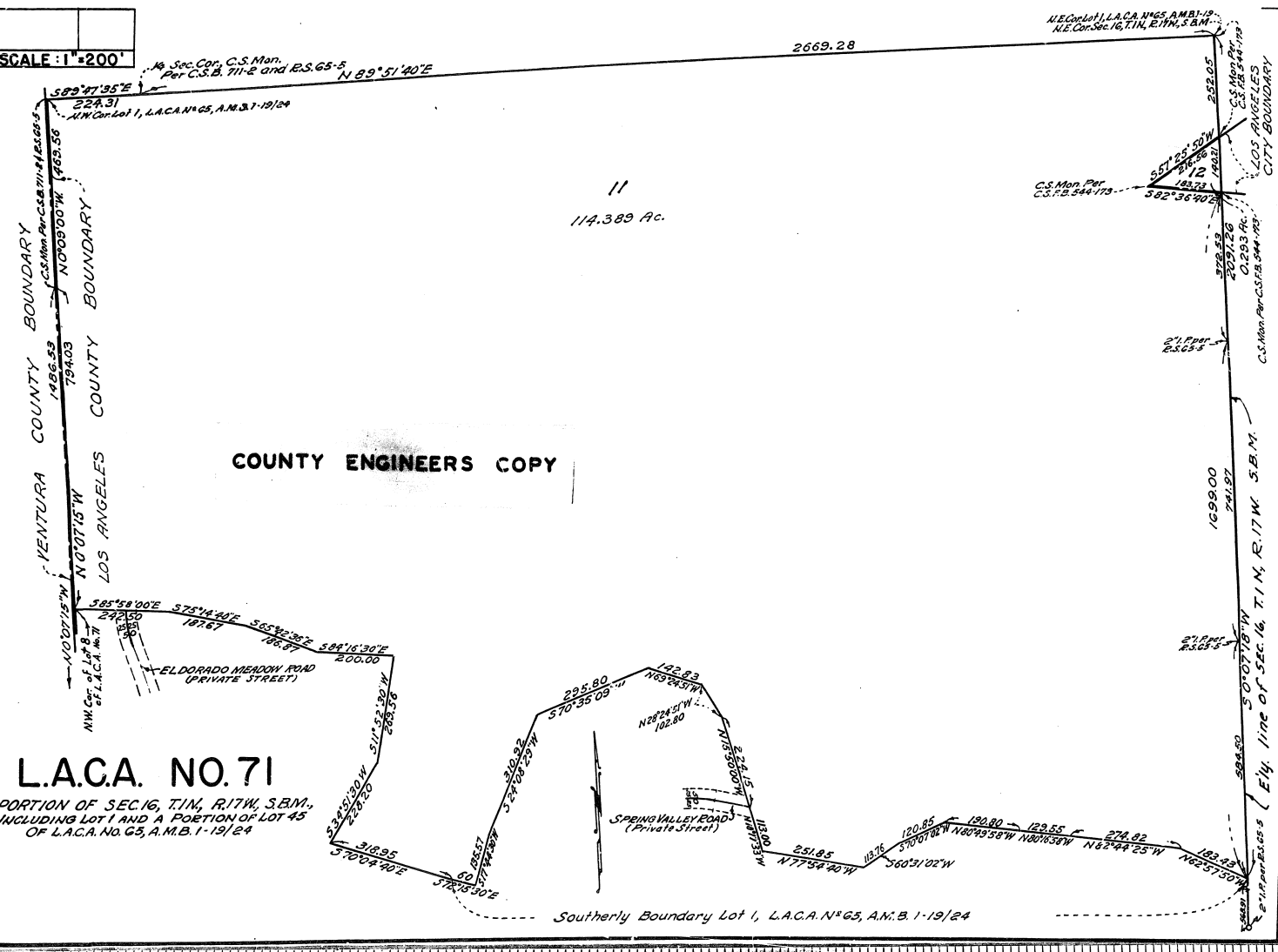
Solomon
Free

I examined December 23, 1955
John A. Lambie, County Engineer
By Deputy

Bearings shown hereon are based on the bearing N89°51'40"E as shown on the northerly line of Lot 1 of L.A.C.A. No. 65, A.M.B. 1-19/24.

L.A.C.A. NO. 71

SCALE: 1"=200'



COUNTY ENGINEERS COPY

L.A.C.A. NO. 71

PORTION OF SEC. 16, T1N, R17W, S.B.M.,
INCLUDING LOT 1 AND A PORTION OF LOT 45
OF L.A.C.A. NO. 65, A.M.B. 1-19/24

Southerly Boundary Lot 1, L.A.C.A. No. 65, A.M.B. 1-19/24