

L.A.C.A. No. 75

BEING A PORTION OF SECTION 2, T.1S., R.12W., S.B.B.&M., AND A PORTION OF LOT 11, OF SAN MARINO PARK AS RECORDED IN BOOK 12, PAGES 74 AND 75 OF MAPS, RECORDS OF LOS ANGELES COUNTY, CALIFORNIA

IN THE CITY OF SAN MARINO, CALIF.

SURVEYED AT THE REQUEST OF SAN GABRIEL COUNTY WATER DISTRICT

FEB. 29, 1956
43 2 P.M.
31

John A. Lambie
Face

I, Ted M. Walsh, hereby certify that I am a Registered Civil Engineer of the State of California; that this map consisting of one sheet correctly represents a survey made under my supervision in January, 1956; that this survey is true, and complete as shown; that the monuments shown hereon are in place; that their position and character are correctly shown, and that such monuments are sufficient to enable the survey to be readily retraced.

Ted M. Walsh
REGISTERED CIVIL ENGINEER No. 6371

BASIS OF BEARINGS
The bearing N 89° 27' 20" E for the N. Line of Longden Drive as shown on Map of Tract No. 11315 M.B. 200:38,39 is the basis of bearings shown hereon.

EXAMINED February 27, 1956

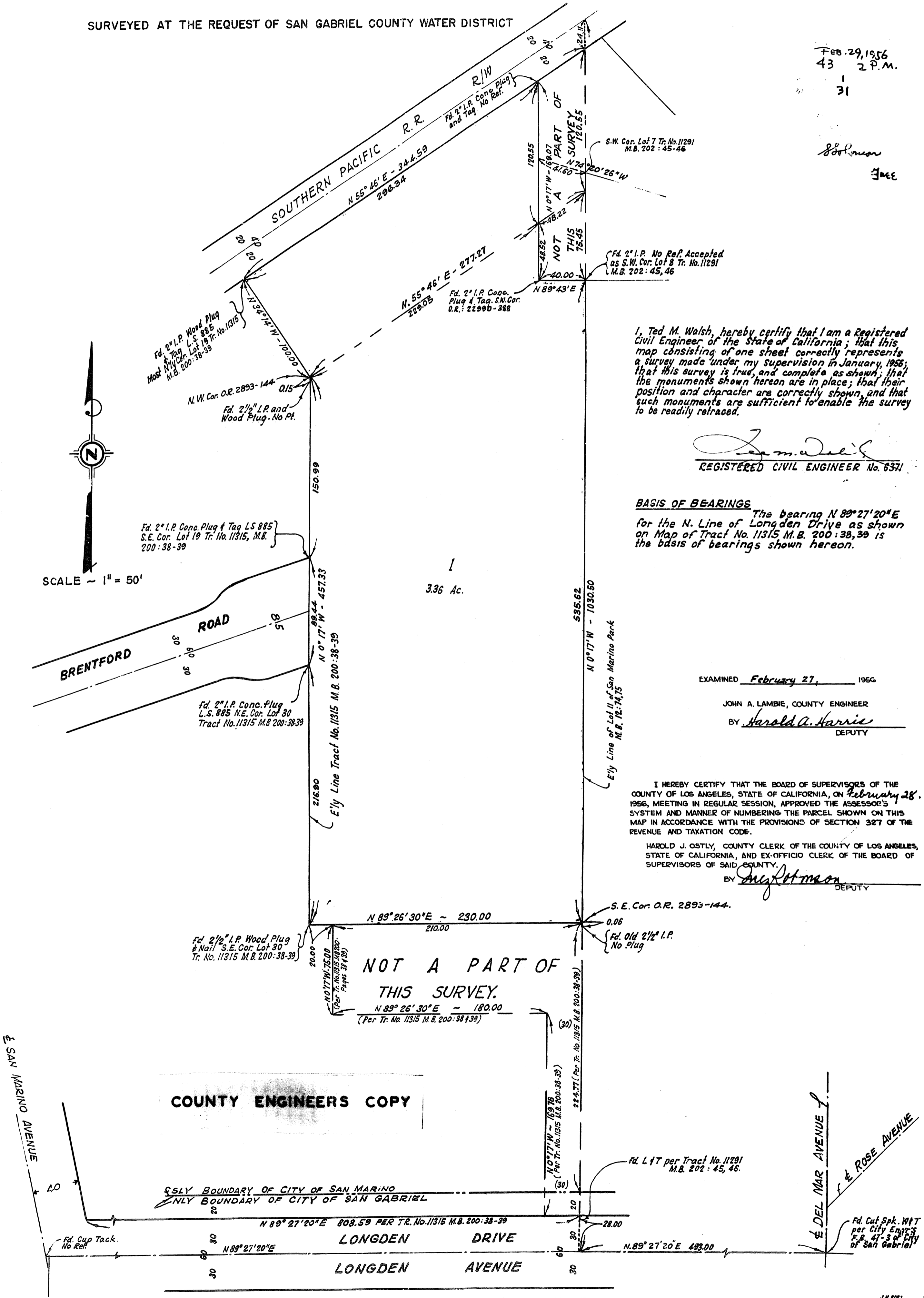
JOHN A. LAMBIE, COUNTY ENGINEER

BY *Harold A. Harris*
DEPUTY

I HEREBY CERTIFY THAT THE BOARD OF SUPERVISORS OF THE COUNTY OF LOS ANGELES, STATE OF CALIFORNIA, ON February 28, 1956, MEETING IN REGULAR SESSION, APPROVED THE ASSESSOR'S SYSTEM AND MANNER OF NUMBERING THE PARCEL SHOWN ON THIS MAP IN ACCORDANCE WITH THE PROVISIONS OF SECTION 327 OF THE REVENUE AND TAXATION CODE.

HAROLD J. OSTLY, COUNTY CLERK OF THE COUNTY OF LOS ANGELES, STATE OF CALIFORNIA, AND EX-OFFICIO CLERK OF THE BOARD OF SUPERVISORS OF SAID COUNTY.

BY *Harold J. Ostly*
DEPUTY



COUNTY ENGINEERS COPY

NOT A PART OF THIS SURVEY.

ONLY BOUNDARY OF CITY OF SAN MARINO
ONLY BOUNDARY OF CITY OF SAN GABRIEL

LONGDEN DRIVE
LONGDEN AVENUE