

L.A.C.A. NO. 76

IN THE CITY OF SAN GABRIEL, CALIFORNIA

BEING A SURVEY OF A PORTION OF LOTS "A", 23, AND 24 OF ORIENTA TRACT AS RECORDED IN BOOK 15 PAGE 78 OF MAPS, RECORDS OF LOS ANGELES COUNTY

Feb. 29, 1956
43 2 P.M.
1
32

Ed. Walsh
SURVEYED AT THE REQUEST OF SAN GABRIEL COUNTY WATER DISTRICT

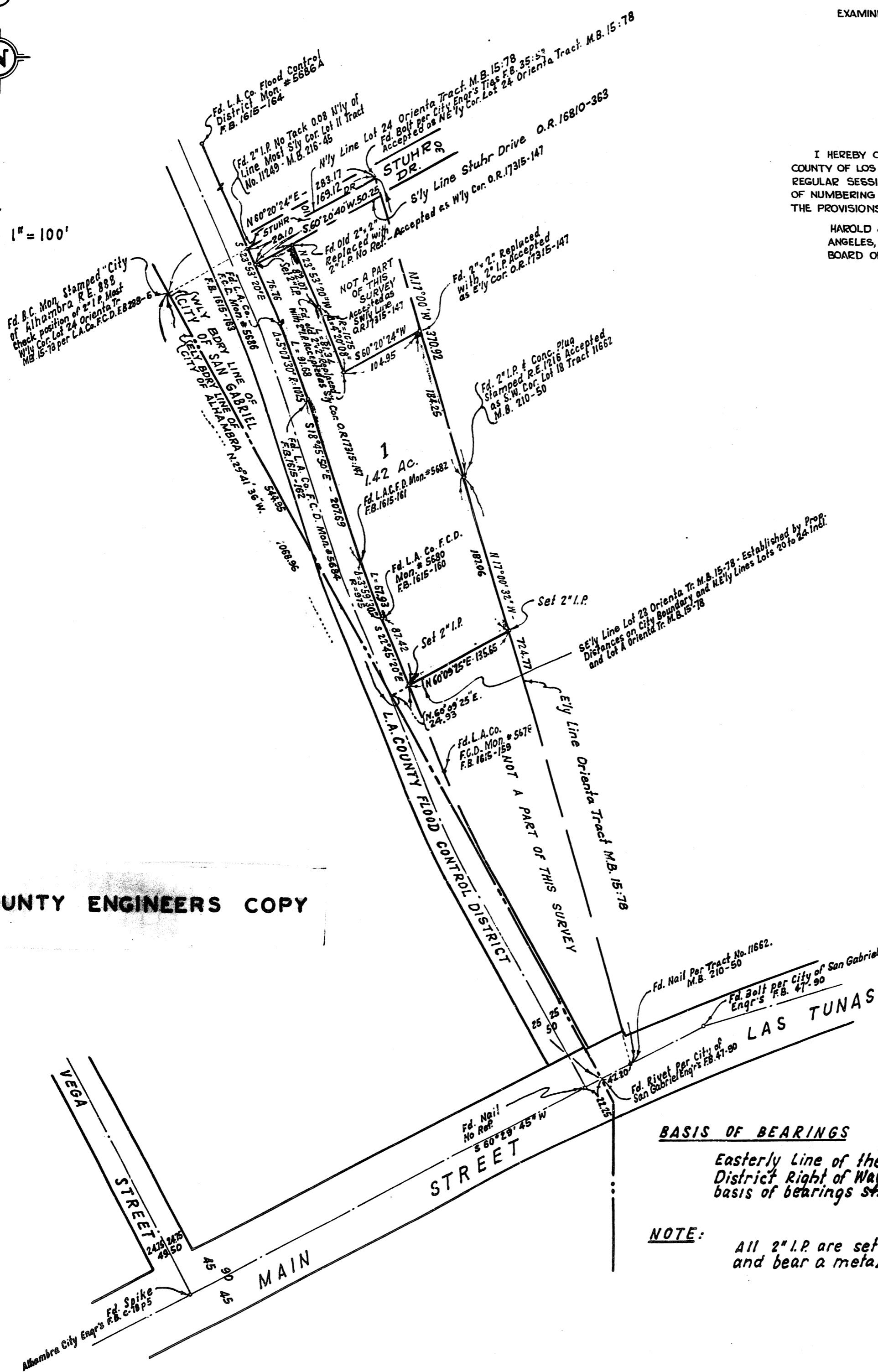
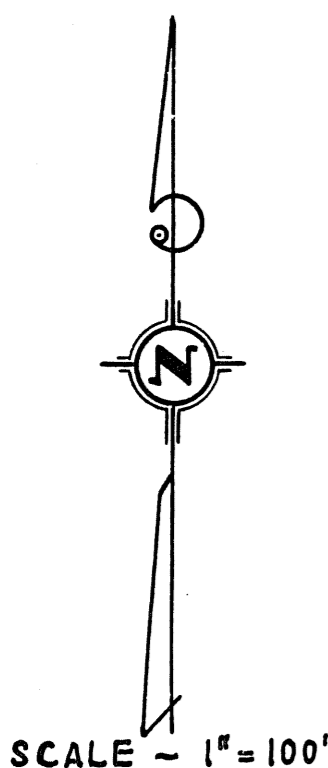
I, Ted M. Walsh, hereby certify that I am a Registered Civil Engineer of the State of California; that this map consisting of one sheet correctly represents a survey made under my supervision in January, 1956; that this survey is true and complete as shown; that the monuments shown hereon are in place that their position and character are correctly shown, and that such monuments are sufficient to enable the survey to be readily retraced.

Ted M. Walsh
REGISTERED CIVIL ENGINEER No. 6371

EXAMINED February 27 1956
JOHN A. LAMBE, COUNTY ENGINEER
BY Harold A. Harris
DEPUTY

I HEREBY CERTIFY THAT THE BOARD OF SUPERVISORS OF THE COUNTY OF LOS ANGELES, ON February 28, 1956, MEETING IN REGULAR SESSION APPROVED THE ASSESSOR'S SYSTEM AND MANNER OF NUMBERING THE PARCEL SHOWN ON THIS MAP IN ACCORDANCE WITH THE PROVISIONS OF SECTION 327 OF THE REVENUE AND TAXATION CODE.

HAROLD J. OSTLY, COUNTY CLERK OF THE COUNTY OF LOS ANGELES, STATE OF CALIFORNIA, AND EX-OFFICIO CLERK OF THE BOARD OF SUPERVISORS OF SAID COUNTY.
BY Harold J. Ostly
DEPUTY



COUNTY ENGINEERS COPY

BASIS OF BEARINGS
The bearing $S 18^{\circ} 45' 50'' E$ for the Easterly Line of the Los Angeles County Flood Control District Right of Way as shown on C.S. 8499-8 is the basis of bearings shown hereon.

NOTE:
All 2" I.P. are set in concrete with concrete plug and bear a metal tag marked "R.E. 6371"