

L.A.C.A. No. 77

FEB. 29, 1956
43 2 P.M.
1
33

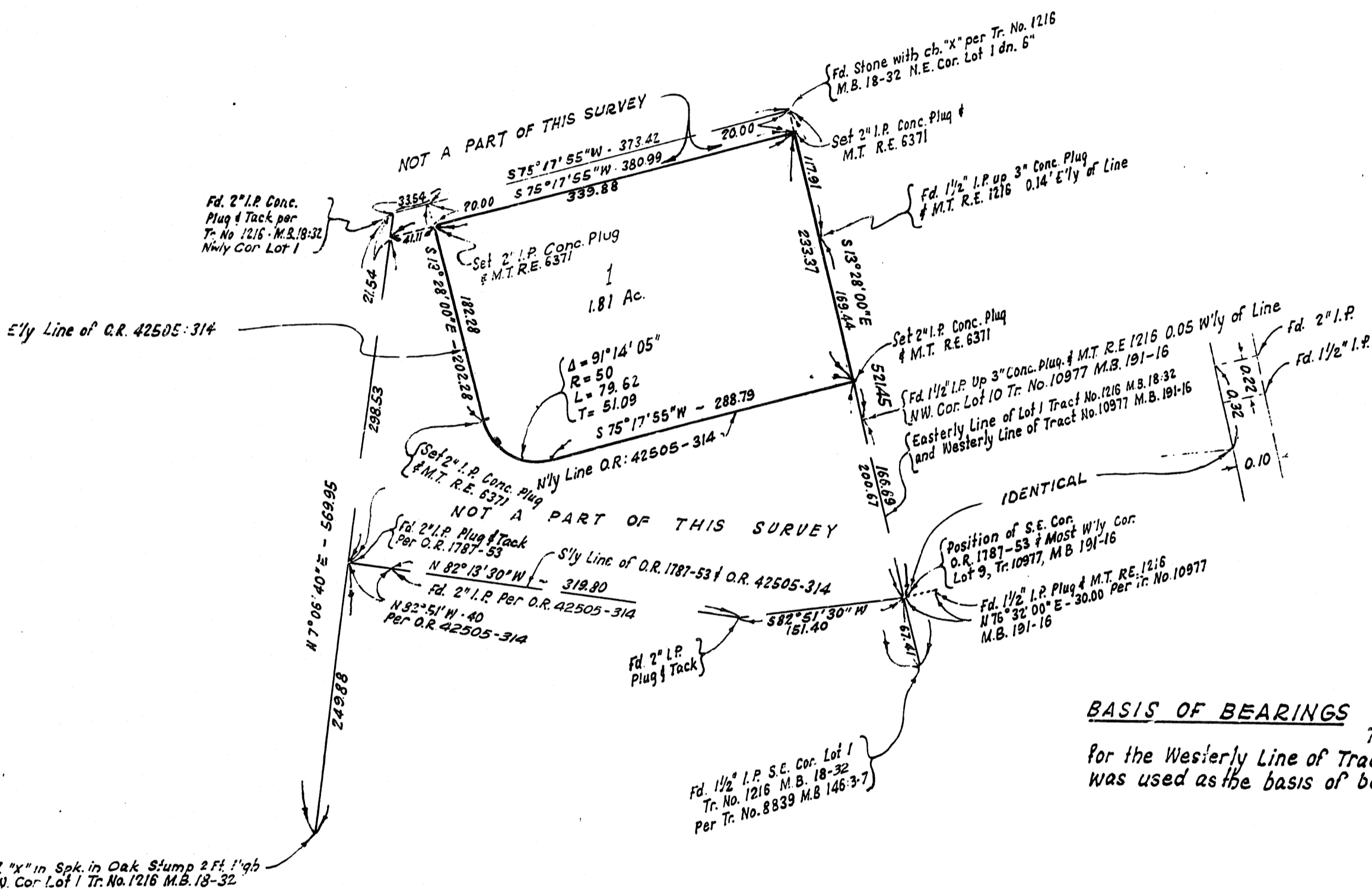
IN THE CITY OF SAN MARINO, COUNTY OF LOS ANGELES, STATE OF CALIFORNIA
BEING A PORTION OF LOT 1 OF TRACT NO. 1216, AS SHOWN ON MAP RECORDED IN BOOK 18
PAGE 32 OF MAPS, RECORDS OF LOS ANGELES COUNTY

SCALE 1"=100'

SURVEYED AT THE REQUEST OF SAN GABRIEL COUNTY WATER DISTRICT

I, Ted M. Walsh, hereby certify that I am a Registered Civil Engineer of the State of California; that this map consisting of one sheet correctly represents a survey made under my supervision in January, 1956; that this survey is true and complete as shown; that the monuments shown hereon are in place that their position and character are correctly shown and that such monuments are sufficient to enable the survey to be readily retraced.

Ted M. Walsh
REGISTERED CIVIL ENGINEER No. 6371



EXAMINED February 27 1956
JOHN A. LAMBIE, COUNTY ENGINEER
BY Harold A. Harris
DEPUTY

I HEREBY CERTIFY THAT THE BOARD OF SUPERVISORS OF THE COUNTY OF LOS ANGELES, STATE OF CALIFORNIA, ON February 28, 1956, MEETING IN REGULAR SESSION, APPROVED THE ASSESSOR'S SYSTEM AND MANNER OF NUMBERING THE PARCEL SHOWN ON THIS MAP IN ACCORDANCE WITH THE PROVISIONS OF SECTION 327 OF THE REVENUE AND TAXATION CODES.

HAROLD J. OSTLY, COUNTY CLERK OF THE COUNTY OF LOS ANGELES, STATE OF CALIFORNIA, AND THE EX-OFFICIO CLERK OF THE BOARD OF SUPERVISORS OF SAID COUNTY.

BY Jack Johnson
DEPUTY

COUNTY ENGINEERS COPY