

L.A.C.A. NO. 72

In unincorporated territory of the County of Los Angeles. Being a portion of the Rancho La Habra as per map recorded in book 1 page 276 of Patents, Records of Los Angeles County, California

FEB. 27, 1958
16 P.M.

34

NOTHING FOUND. POINT SET BY PRODUCING LINE FROM N.E. COR. THROUGH L.T. TO SECTION LINE.

I HEREBY CERTIFY THAT I AM A LICENSED SURVEYOR OF THE STATE OF CALIFORNIA AND THAT SHEET 1 OF THIS MAP CORRECTLY REPRESENTS A SURVEY MADE UNDER MY SUPERVISION FROM AUGUST 1955 TO FEBRUARY 1957.

R.B. Huey
R. B. HUEY - L.S. No. 1742

Whereas the Board of Supervisors of the County of Los Angeles, State of California, on January 26, 1958, meeting in regular session, approved the assessor's system and manner of numbering the parcels shown on this map, in accordance with the provisions of Section 327 of the Revenue and Taxation Code. Harold J. Ostly, County Clerk of the County of Los Angeles, State of California, and I, _____, Clerk of the Board of Supervisors of said County.

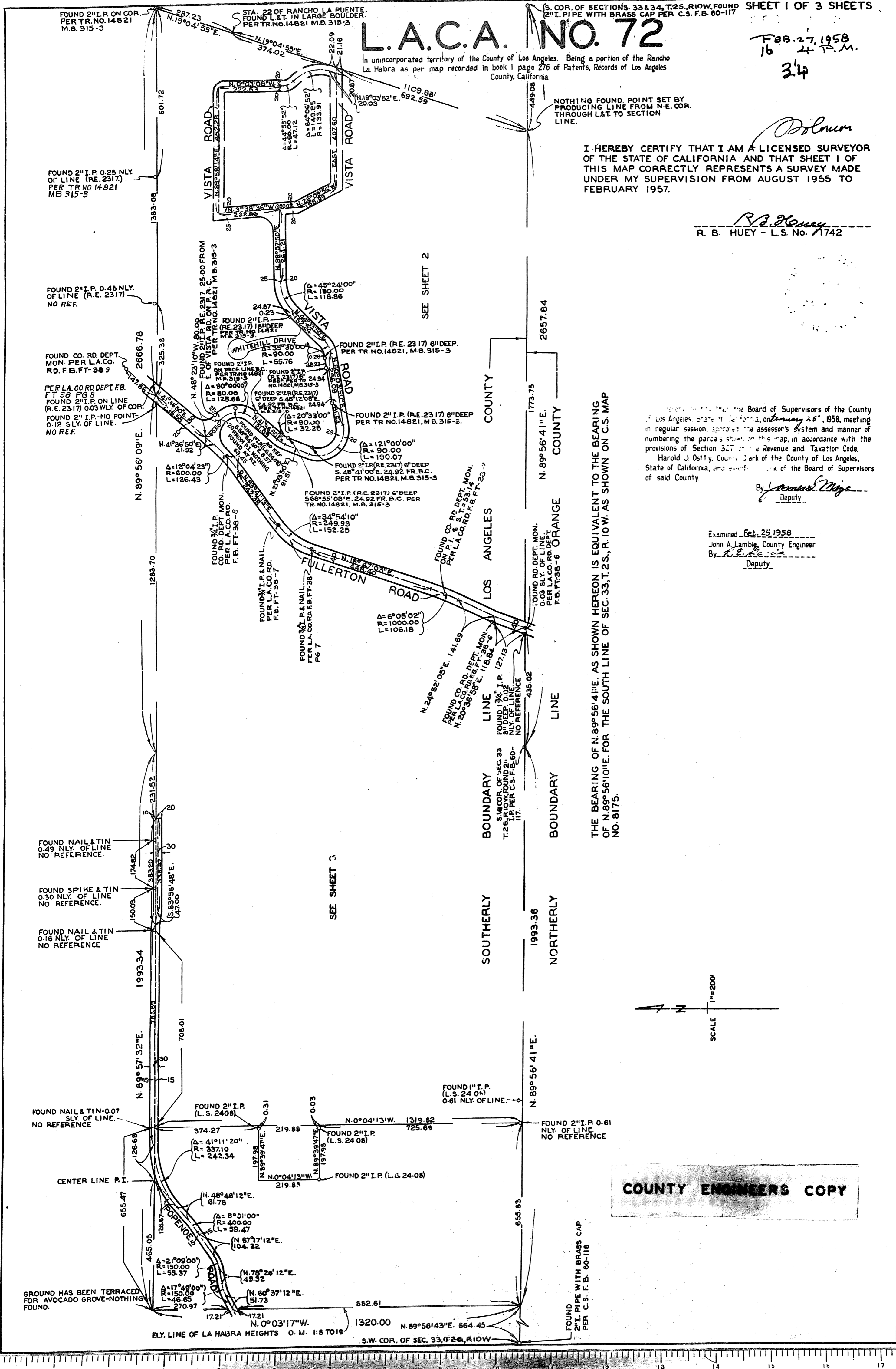
By *James Mize*
Deputy

Examined Feb. 25 1958
John A. Lambie, County Engineer
By *R.E. Garcia*
Deputy

THE BEARING OF N. 89° 56' 41" E. AS SHOWN HEREON IS EQUIVALENT TO THE BEARING OF N. 89° 56' 10" E. FOR THE SOUTH LINE OF SEC. 33, T. 25, R. 10 W. AS SHOWN ON C.S. MAP NO. 8175.

COUNTY ENGINEERS COPY

SCALE 1"=200'



SEE SHEET 2

SEE SHEET 3

FOUND 2" I.P. WITH BRASS CAP PER C.S. F.B. 60-118

GROUND HAS BEEN TERRACED FOR AVOCADO GROVE-NOTHING FOUND.

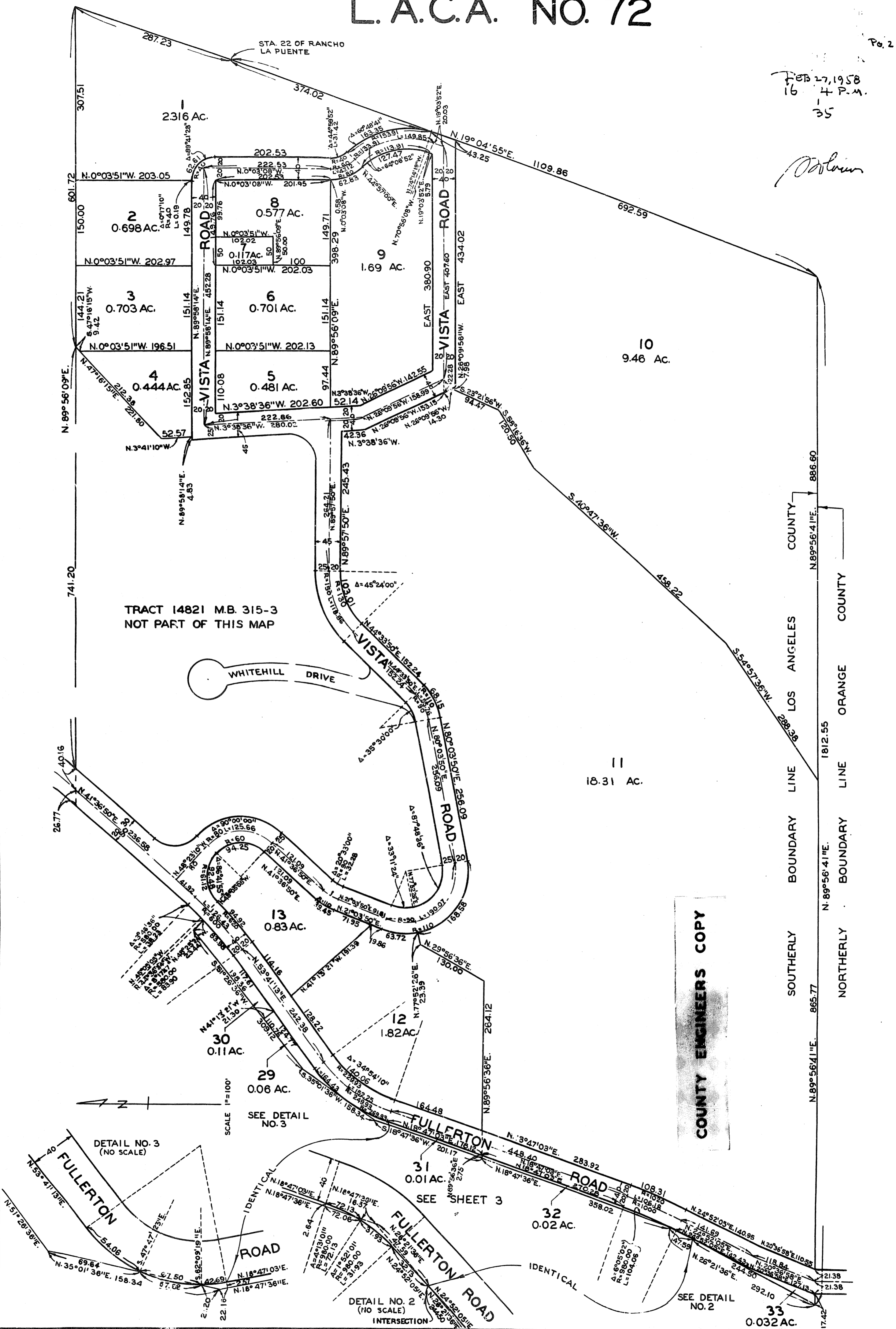
S.W. COR. OF SEC. 33, T. 25, R. 10 W.

L.A.C.A. NO. 72

Page 2

FEB 27, 1958
16 4 P.M.
35

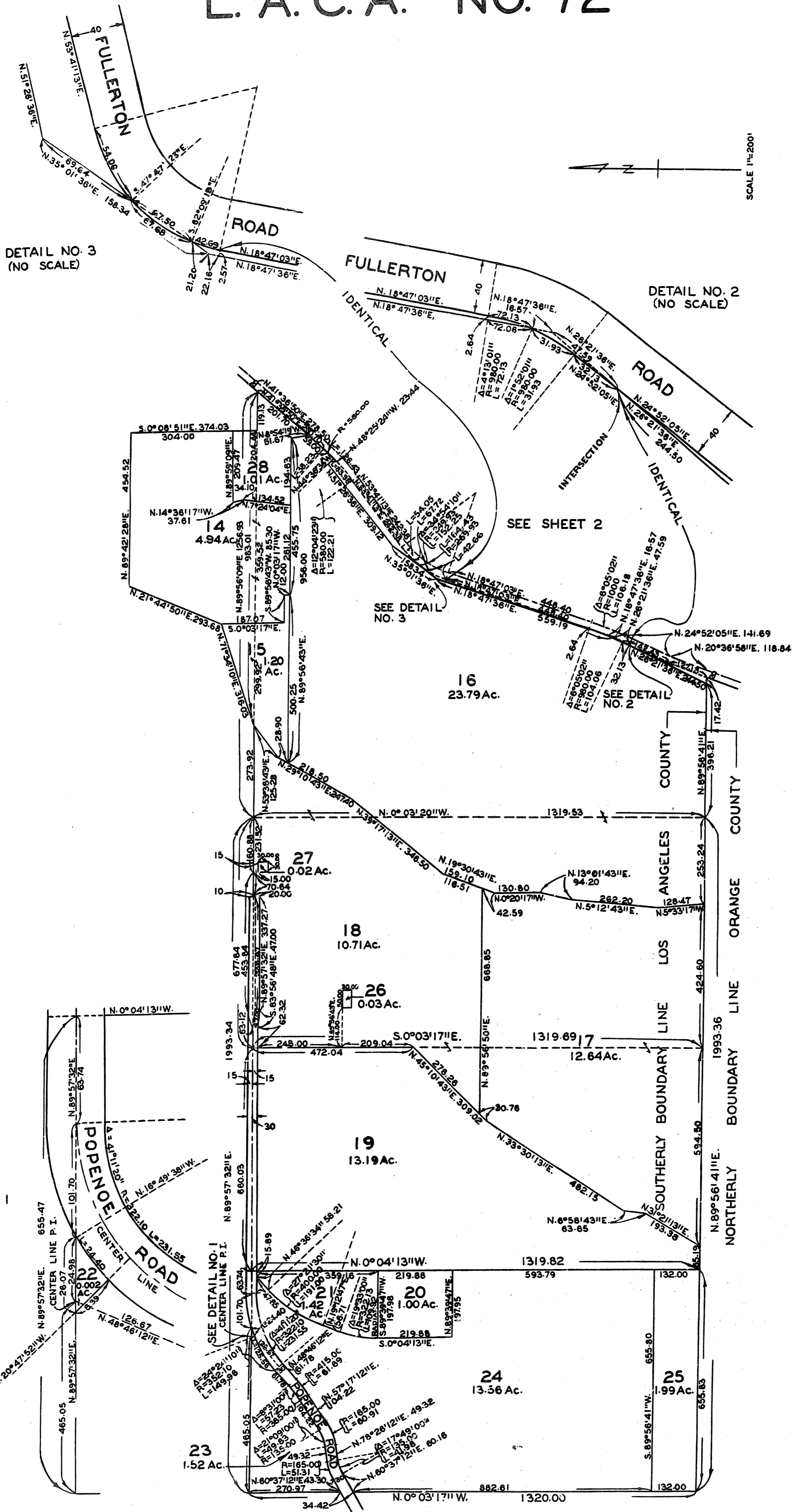
Palmer



L. A. C. A. NO. 72

Feb. 27, 1958
16 H.P.M.
36

John

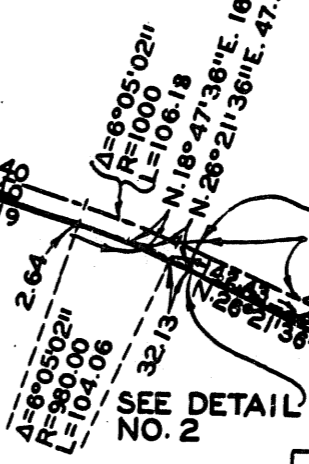
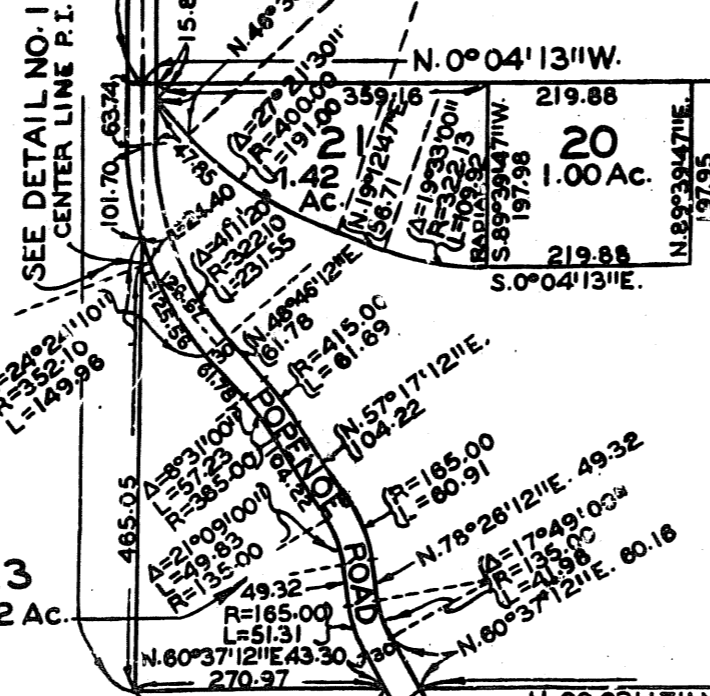
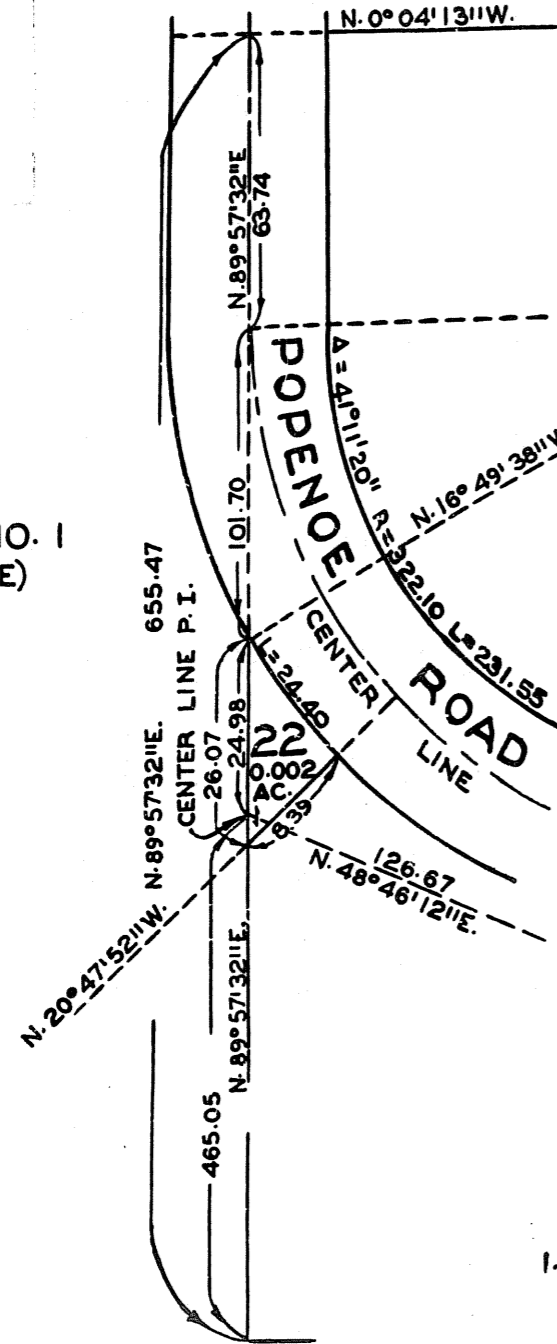


DETAIL NO. 3
(NO SCALE)

DETAIL NO. 2
(NO SCALE)

COUNTY ENGINEERS COPY

DETAIL NO. 1
(NO SCALE)



SEE SHEET 2

SEE DETAIL NO. 3

SEE DETAIL NO. 2

