

# L. A. C. A. NO. 73

PARTLY IN THE CITY OF LA VERNE AND PARTLY IN THE UNINCORPORATED TERRITORY OF THE COUNTY OF LOS ANGELES

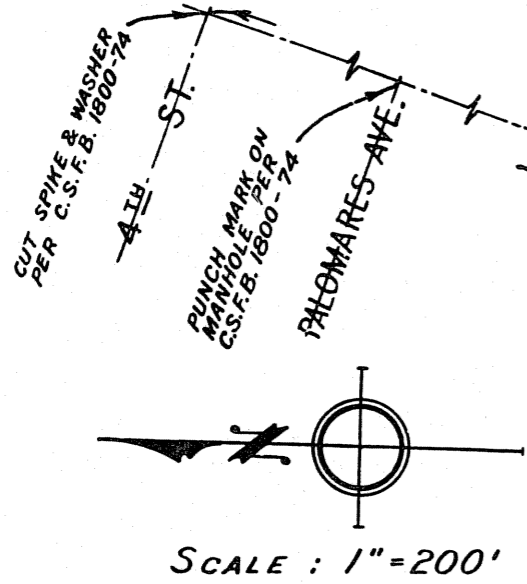
Being a portion of the Rancho San Jose, as shown on map recorded in Book 2, Pages 292 and 293, of Patents in the office of the Recorder of the County of Los Angeles, and a portion of Lordsburg, as shown on a map recorded in Book 18, Pages 9 to 12 inclusive of Miscellaneous Records, in the office of said Recorder, and a portion of Lots 8 and 9, Keiser Tract, as shown on map recorded in Book 72, Page 95, of Miscellaneous Records, in the office of said Recorder, and a portion of "A" Street and Park Avenue as vacated.

COMPILED BY  
**JOHN A. LAMBIE - COUNTY ENGINEER**  
 JANUARY, 1958

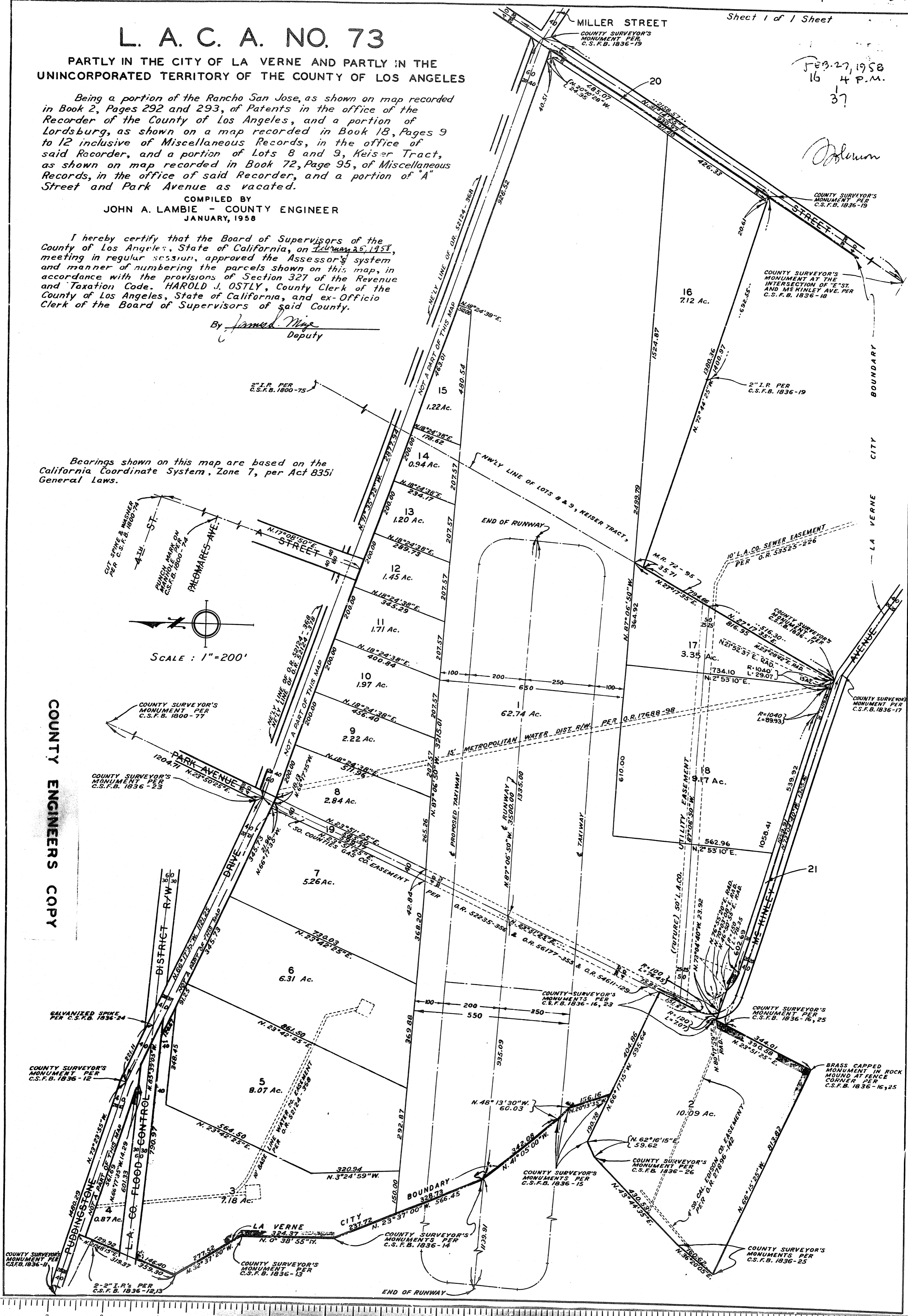
I hereby certify that the Board of Supervisors of the County of Los Angeles, State of California, on January 26, 1958, meeting in regular session, approved the Assessor's system and manner of numbering the parcels shown on this map, in accordance with the provisions of Section 327 of the Revenue and Taxation Code. HAROLD J. OSTLY, County Clerk of the County of Los Angeles, State of California, and ex-Officio Clerk of the Board of Supervisors of said County.

By James Wing  
 Deputy

Bearings shown on this map are based on the California Coordinate System, Zone 7, per Act 8351 General Laws.



COUNTY ENGINEERS COPY



Feb. 27, 1958  
 16 4 P.M.  
 37

*Johnson*

BOUNDARY CITY LA VERNE

