

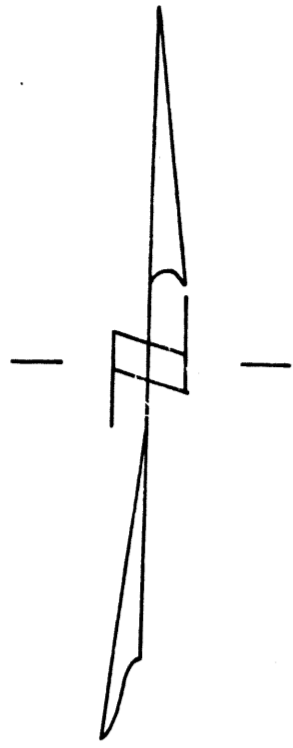
L.A.C.A. MAP NO. 74

IN THE CITY OF SANTA MONICA

FEB. 27, 1958
16 4 P.M.
38

BEING A SURVEY OF A PORTION OF THE RANCHO SAN VICENTE Y SANTA MONICA AS PER MAP RECORDED IN BOOK 3 PAGES 30 AND 31 OF PATENTS, AND PORTIONS OF LOTS 1, 2 AND 4, BLOCK B, TILDEN TRACT AS PER MAP RECORDED IN BOOK 2, PAGE 93 OF MAPS, AND A PORTION OF LOT 5, TRACT NO. 9774 AS PER MAP RECORDED IN BOOK 140 PAGES 64 TO 66 INCLUSIVE, OF MAPS, ALL IN THE OFFICE OF THE RECORDER OF THE COUNTY OF LOS ANGELES, IN THE STATE OF CALIFORNIA.

D. Wynne

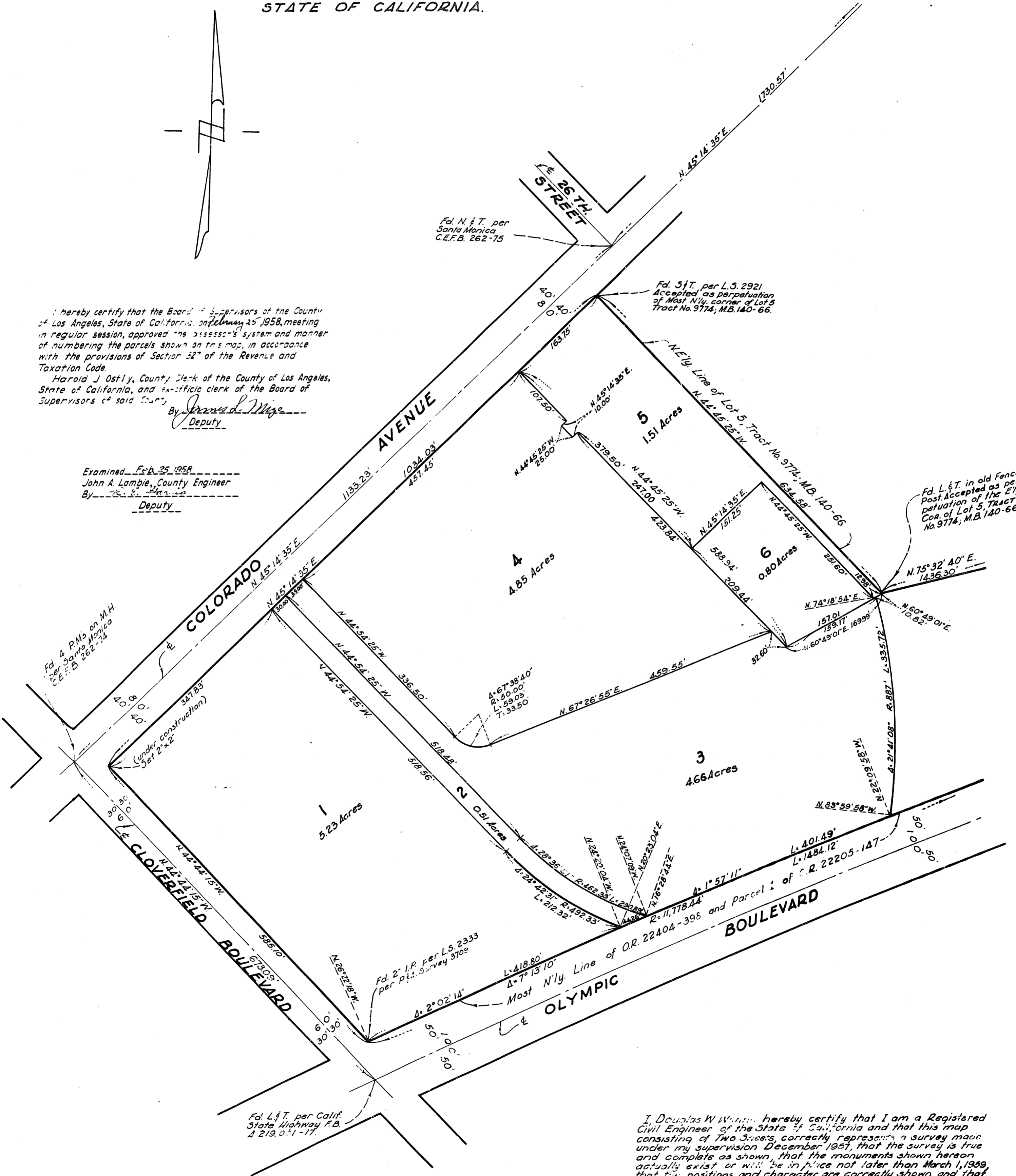


I hereby certify that the Board of Supervisors of the County of Los Angeles, State of California, on February 25, 1958, meeting in regular session, approved the assessor's system and manner of numbering the parcels shown on this map, in accordance with the provisions of Section 32 of the Revenue and Taxation Code.

Harold J Ostly, County Clerk of the County of Los Angeles, State of California, and ex-officio clerk of the Board of Supervisors of said County.

By *James D. Wize*
Deputy

Examined Feb. 25, 1958
John A. Lambie, County Engineer
By *W. S. ...*
Deputy



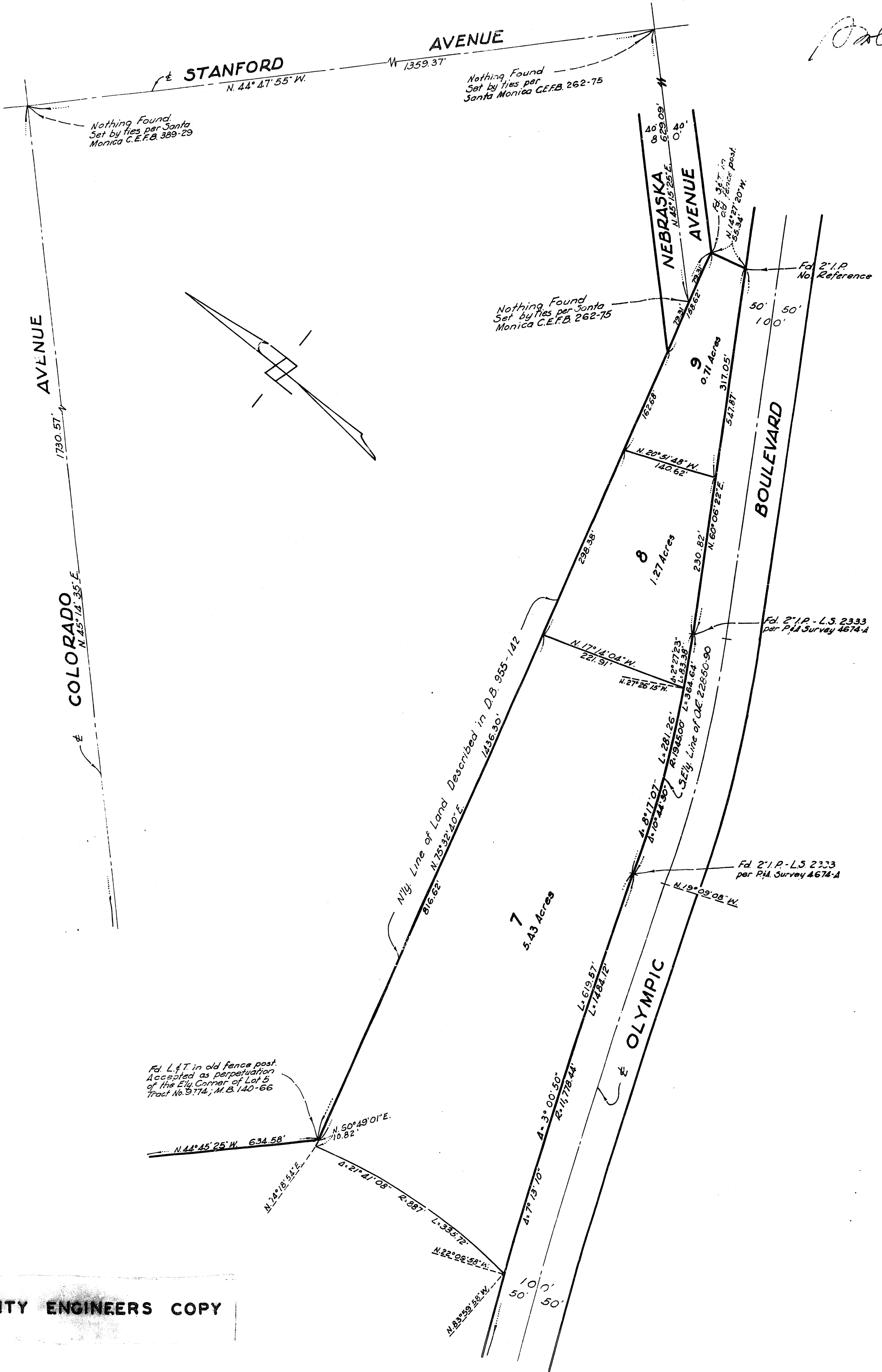
I, Douglas W. Wynne, hereby certify that I am a Registered Civil Engineer of the State of California and that this map consisting of Two Sheets, correctly represents a survey made under my supervision December 1957, that the survey is true and complete as shown, that the monuments shown hereon actually exist or will be in place not later than March 1, 1959, that the positions and character are correctly shown, and that said monuments are sufficient to enable the survey to be retraced.

Douglas W. Wynne
DOUGLAS W. WYNNE R.C.E. NR. 9438

L.A.C.A. MAP NO. 74

IN THE CITY OF SANTA MONICA

FEB. 27, 1958
16 4 P.M.
39



COUNTY ENGINEERS COPY