

I, G.R. PSOMAS, hereby certify that I am a Licensed Surveyor of the State of California and this map consisting of one sheet correctly represents a survey made under my supervision in April 7, 1957, that the survey is true and complete as shown; that the monuments shown hereon are in place; that their positions and character are correctly shown and that said monuments are sufficient to enable the survey to be retraced.

G.R. Psomas
G.R. PSOMAS, L.S. No. 2304
222 68'

I hereby certify that the Board of Supervisors of the County of Los Angeles, State of California, at a meeting of February 25, 1958, in regular session, approved the assessor's system and manner of numbering the parcels shown on this map, in accordance with the provisions of Section 327 of the Revenue and Taxation Code.

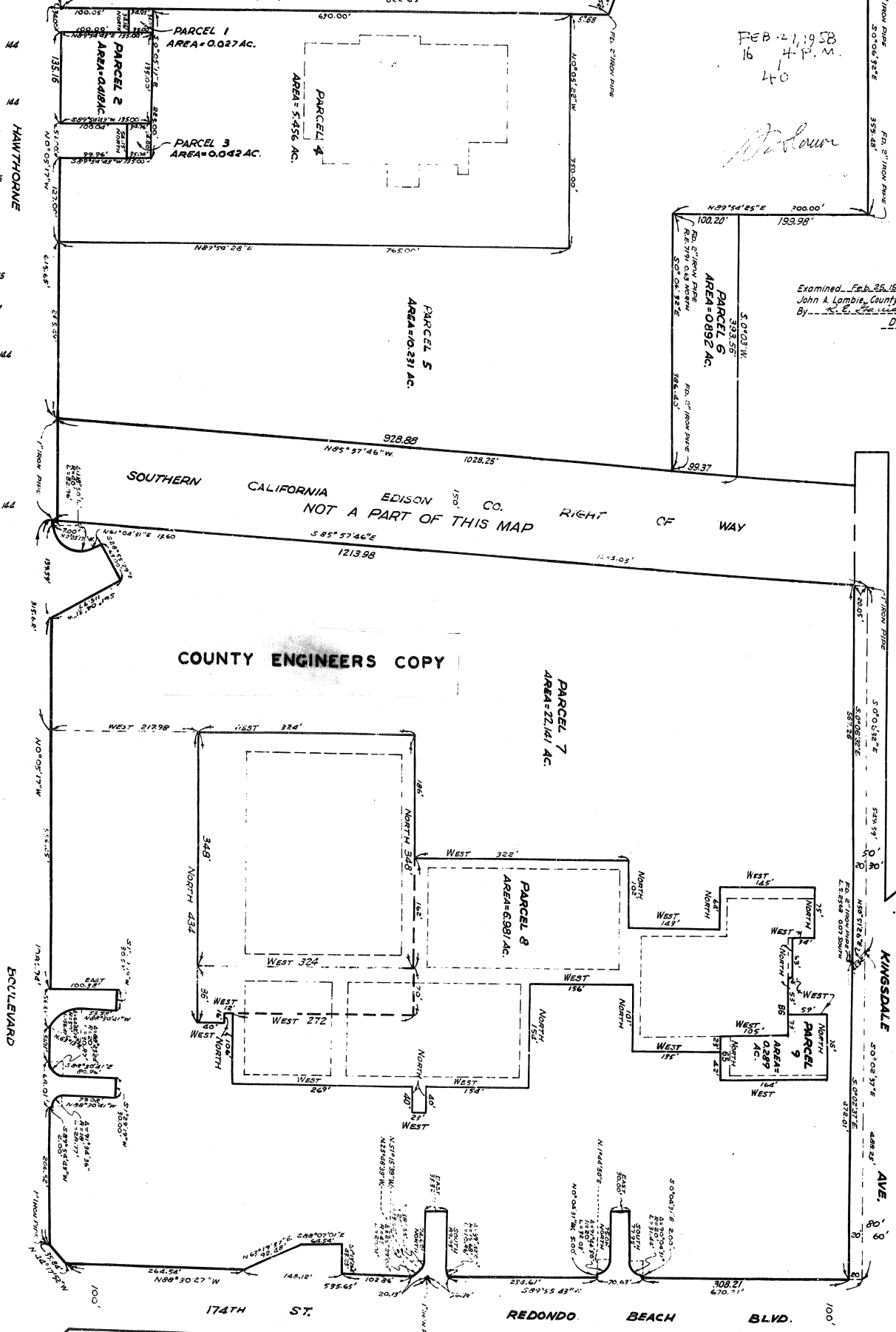
Harold J. Ostly, County Clerk of the County of Los Angeles, State of California, and ex-officio clerk of the Board of Supervisors of said County.

Harold J. Ostly
Deputy

FEB 27 1958
16
4 P.M.
40

W. Brown

Examined Feb. 25, 1958
John A. Lambie, County Engineer
By *J. E. ...* Deputy



COUNTY ENGINEERS COPY

SCALE 1/4" = 100'

LEGAL DESCRIPTION
PORTION OF LOTS 12 & 13 MC DONALD TRACT M.R.
15-21-22, PORTION OF RANCHO SAUSAL REDONDO
CITY OF REDONDO BEACH, COUNTY OF LOS ANGELES, CALIFORNIA

L.A.C.A. MAP NO. 78

SCALE: 1/4" = 100'