

L.A.C.A. MAP NO. 81

IN THE CITY OF LOS ANGELES

BEING A PORTION OF LOT 115 OF TRACT No. 11754 RECORDED IN BOOK 223, PAGES 1 TO 3 INCLUSIVE OF MAPS IN THE OFFICE OF THE COUNTY RECORDER OF LOS ANGELES COUNTY, STATE OF CALIFORNIA.

TEGART ENGINEERS

FEBRUARY 1958

REGISTERED CIVIL ENGINEERS

I, Harold G. Tegart, hereby certify that I am a Civil Engineer, and that this map, consisting of one sheet correctly represents a survey made under my supervision and that all of the monuments shown hereon actually exist and their positions are correctly shown.

Harold G. Tegart
R.E. 3164

Feb. 27, 1958
16 4 P.M.
43

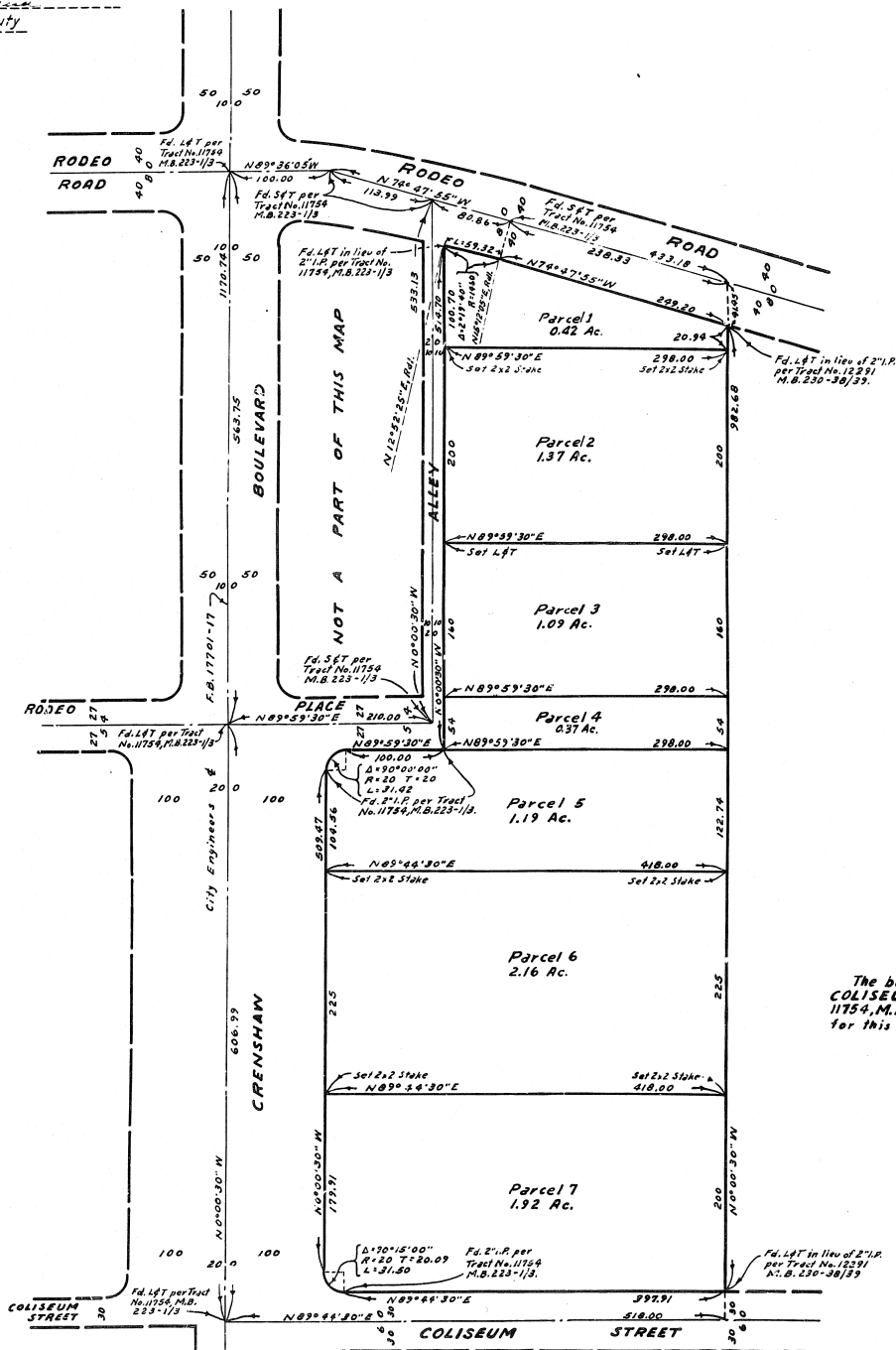
[Handwritten signature]

I hereby certify that the Board of Supervisors of the County of Los Angeles, State of California, on February 25, 1958, meeting in regular session, approved the classification system and manner of numbering the parcels shown on this map, in accordance with the provisions of Section 327 of the Revenue and Taxation Code.

Harold J. Ostly, County Clerk of the County of Los Angeles, State of California, and ex-officio clerk of the Board of Supervisors of said County.

Harold J. Ostly
Deputy

Examined Feb. 25, 1958
John A. Lambie, County Engineer
By *[Signature]*
Deputy



COUNTY ENGINEERS COPY