

L.A.C.A. MAP NO. 82

In unincorporated territory of the County of Los Angeles Being a portion of the Rancho La Habra as per map recorded in book 1 page 276 of Patents, Records of Los Angeles County, California

APRIL 17, 1959
52 P.M.
1
44
CAL

NOTHING FOUND POINT SET BY PRODUCING LINE FROM NE COP THROUGH L & T TO SECTION LINE.

I HEREBY CERTIFY THAT I AM A LICENSED SURVEYOR OF THE STATE OF CALIFORNIA AND THAT SHEET 1 OF THIS MAP CORRECTLY REPRESENTS A SURVEY MADE UNDER MY SUPERVISION FROM AUGUST 1955 TO FEBRUARY 1957.

R.B. Huey
R B HUEY - L S No 1742

I hereby certify that the Board of Supervisors of the County of Los Angeles, State of California, on April 14, 1959, meeting in regular session, approved the Assessor's system and manner of numbering the parcels shown on this map, in accordance with Section 327 of the Revenue and Taxation Code.

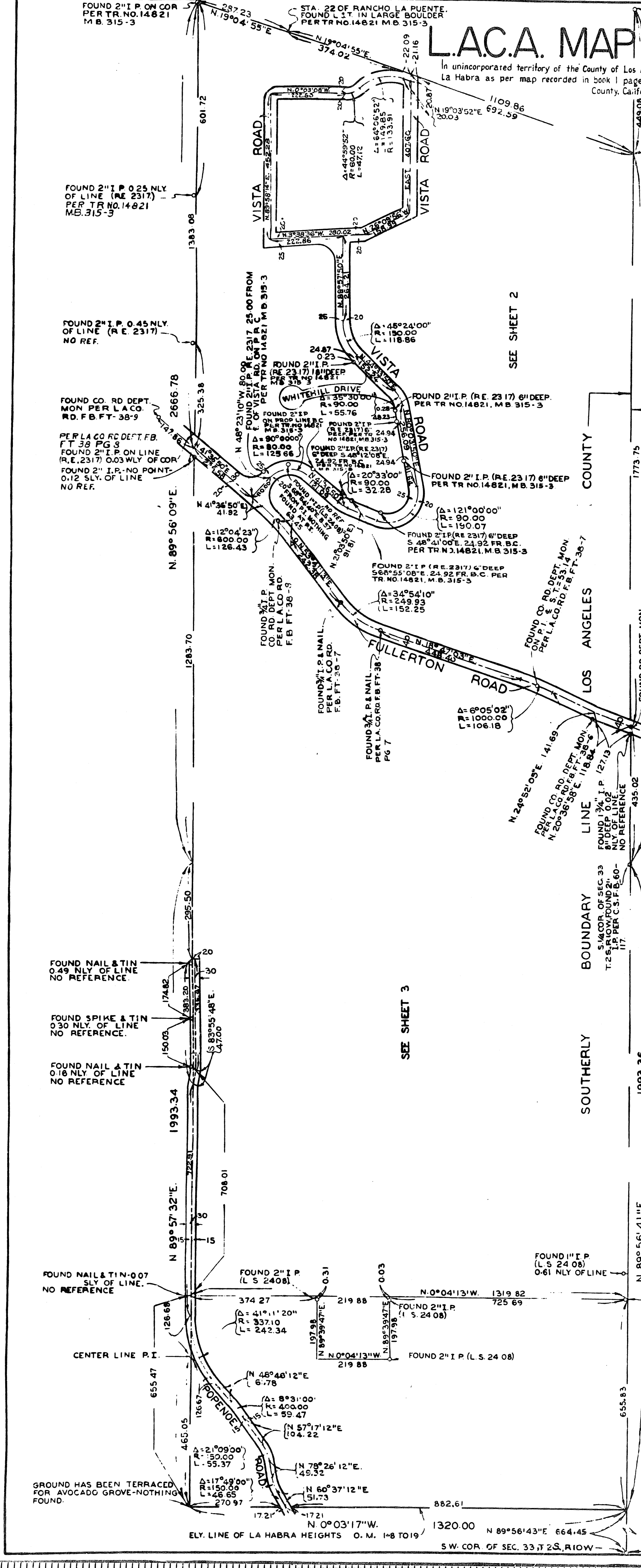
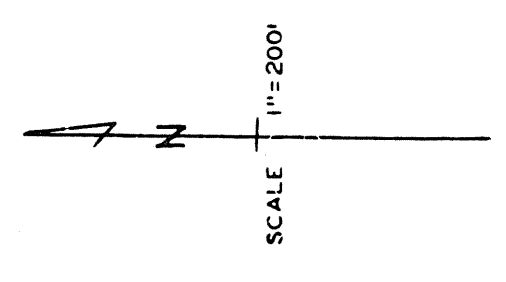
Harold J. Ostly, County Clerk of the County of Los Angeles, State of California, and Ex-Officio Clerk of the Board of Supervisors of said County.

By *James Yamada*
Deputy

Examined 3-19-59
John A. Langley, County Engineer
By *James W. Peace*
Deputy

THE BEARING OF N 89° 56' 41" E. AS SHOWN HEREON IS EQUIVALENT TO THE BEARING OF N 89° 56' 10" E. FOR THE SOUTH LINE OF SEC. 33, T. 25, R. 10 W. AS SHOWN ON C.S. MAP NO. 8175.

COUNTY ENGINEERS COPY



SEE SHEET 2

SEE SHEET 3

SOUTHERLY BOUNDARY LINE
NORTHERLY BOUNDARY LINE

FOUND 2" I.P. WITH BRASS CAP PER C.S. F.B. 60-118

SW. COR. OF SEC. 33, T. 25, R. 10 W.

GROUND HAS BEEN TERRACED FOR AVOCADO GROVE-NOTHING FOUND.

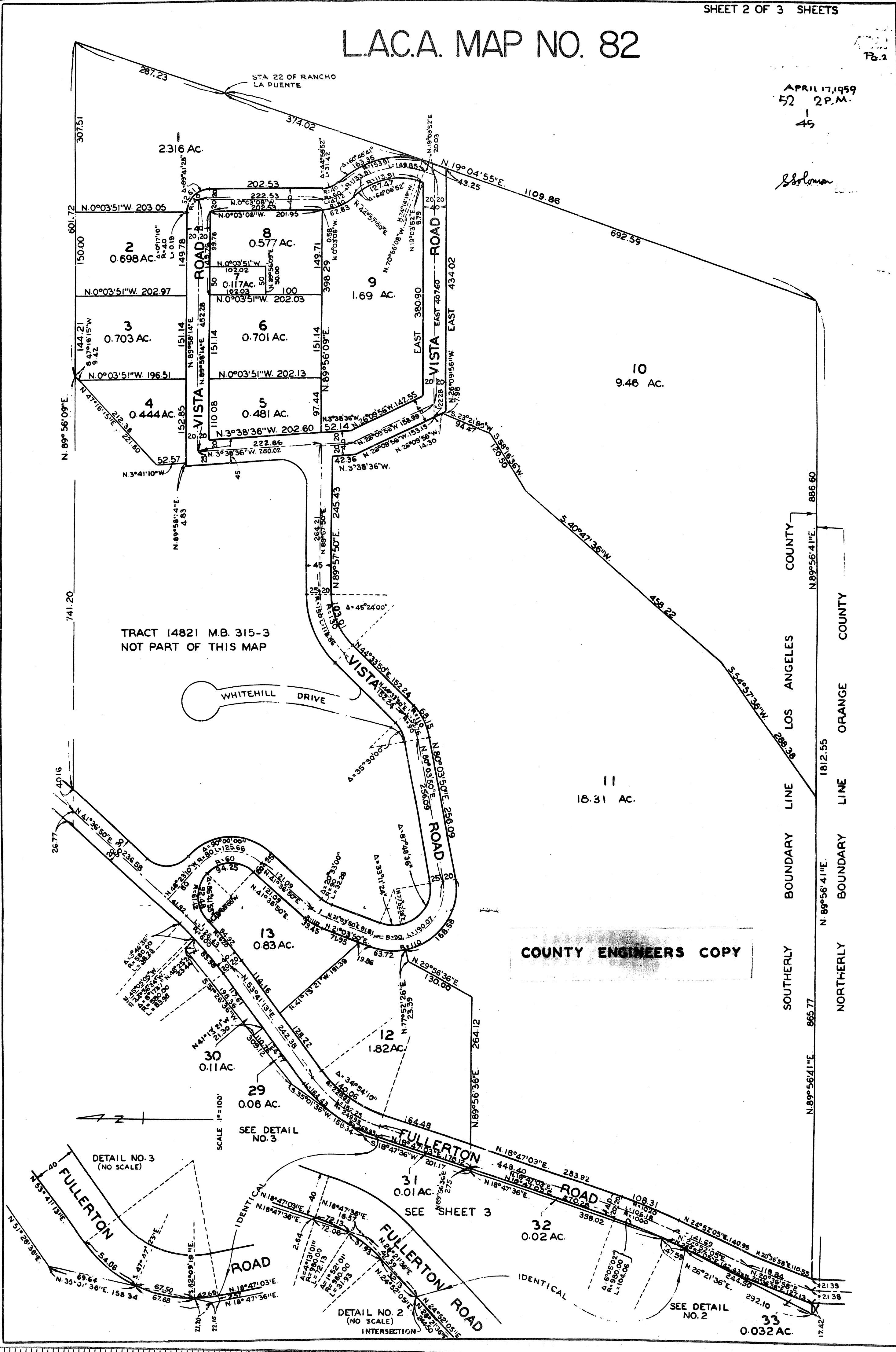
L.A.C.A. MAP NO. 82

Pa. 2

APRIL 17, 1959
52 2 P.M.

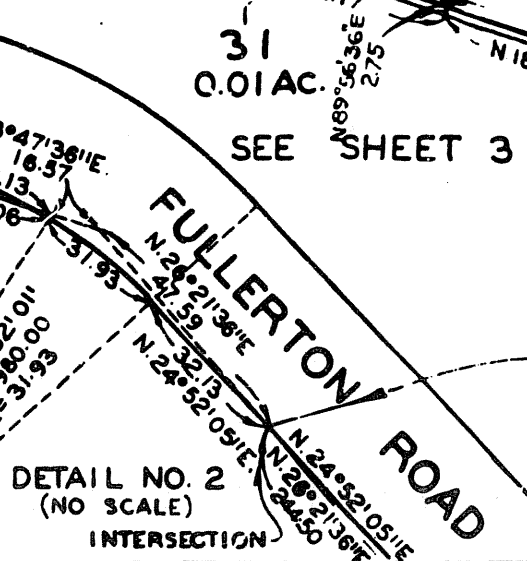
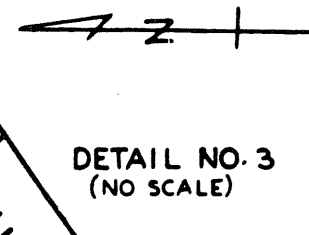
45

Solomon



TRACT 14821 M.B. 315-3
NOT PART OF THIS MAP

COUNTY ENGINEERS COPY



SCALE 1"=100'

SEE DETAIL NO. 3

SEE SHEET 3

SEE DETAIL NO. 2

FULLERTON ROAD

FULLERTON ROAD

ROAD

FULLERTON ROAD

IDENTICAL

IDENTICAL

SEE DETAIL NO. 3

SEE SHEET 3

SEE DETAIL NO. 2

FULLERTON ROAD

FULLERTON ROAD

ROAD

FULLERTON ROAD

IDENTICAL

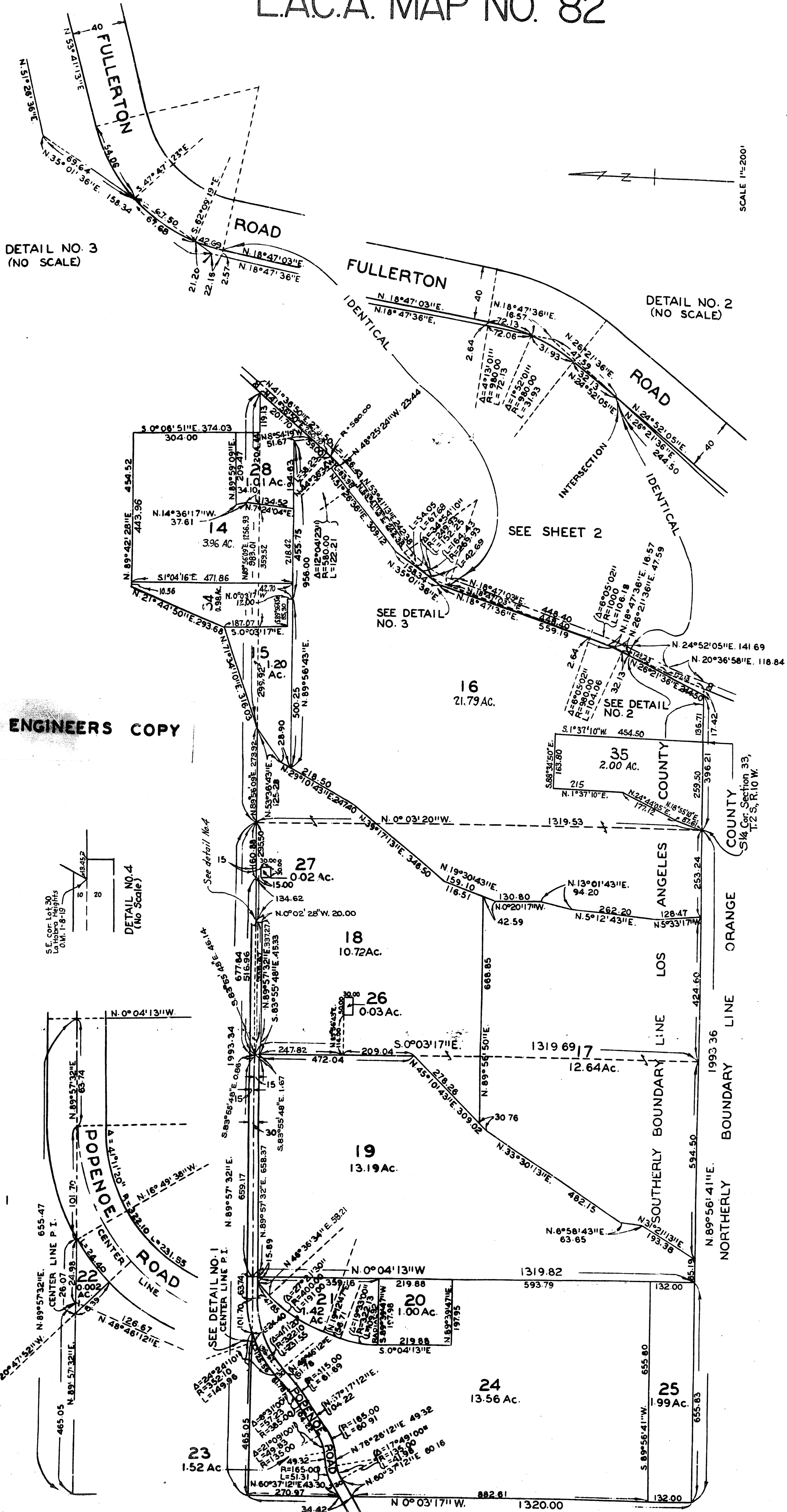
IDENTICAL

L.A.C.A. MAP NO. 82

Pg. 3

APRIL 17, 1959
52 2 P.M.

46



DETAIL NO. 3
(NO SCALE)

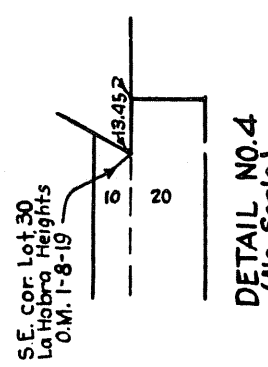
DETAIL NO. 2
(NO SCALE)

SEE SHEET 2

SEE DETAIL NO. 3

SEE DETAIL NO. 2

COUNTY ENGINEERS COPY



DETAIL NO. 1
(NO SCALE)

