

# L.A.C.A. MAP NO. 83

IN THE CITY OF GARDENA  
PART OF LOT 14, GARDENA TRACT, M.R.43-5

Prepared for Victor C. Hornung

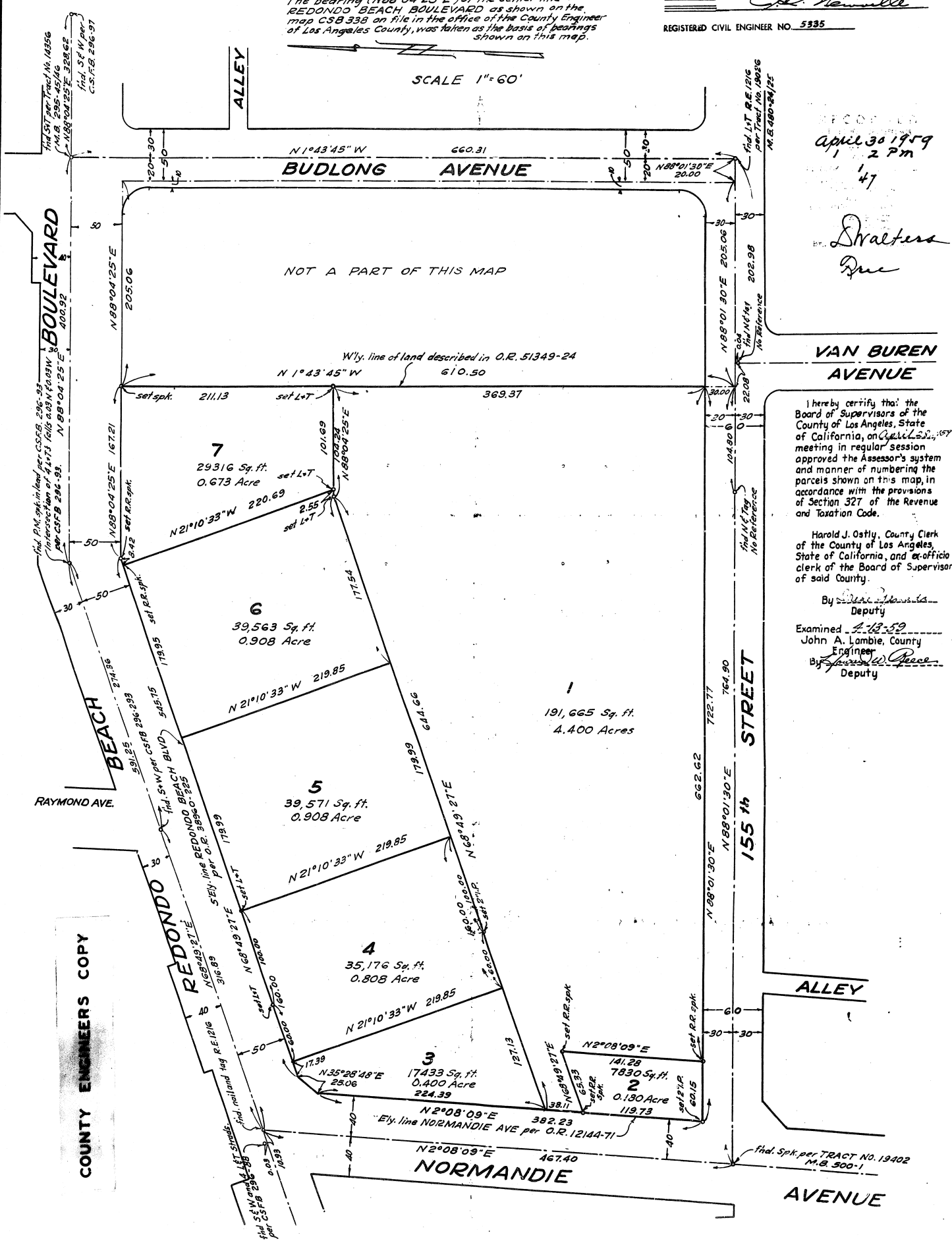
The bearing (N88°04'25"E) of the center line of REDONDO BEACH BOULEVARD as shown on the map CSB 338 on file in the office of the County Engineer of Los Angeles County, was taken as the basis of bearings shown on this map.

I HEREBY CERTIFY THAT I AM A REGISTERED CIVIL ENGINEER OF THE STATE OF CALIFORNIA, THAT THIS MAP, CONSISTING OF \_\_\_\_\_ SHEETS, CORRECTLY REPRESENTS A TRUE AND COMPLETE SURVEY MADE UNDER MY SUPERVISION IN JANUARY 1959, THAT THE MONUMENTS OF THE CHARACTER AND LOCATIONS SHOWN HEREON ARE IN PLACE \_\_\_\_\_ IN PLACE WITHIN FIVE MONTHS FROM THE RECORDING DATE OF THIS MAP THAT SAID MONUMENTS ARE SUFFICIENT TO ENABLE THE SURVEY TO BE READILY RETRACED

*J. H. Swallow*

REGISTERED CIVIL ENGINEER NO. 5535

SCALE 1" = 60'



April 30 1959  
1 2 PM  
47

*Swallow*  
*Due*

VAN BUREN AVENUE

I hereby certify that the Board of Supervisors of the County of Los Angeles, State of California, on April 23, 1959 meeting in regular session approved the Assessor's system and manner of numbering the parcels shown on this map, in accordance with the provisions of Section 327 of the Revenue and Taxation Code.

Harold J. Ostly, County Clerk of the County of Los Angeles, State of California, and ex-officio clerk of the Board of Supervisors of said County.

By *Deputy*  
Deputy

Examined *2-13-59*  
John A. Lambie, County Engineer  
By *Deputy*  
Deputy

COUNTY ENGINEERS COPY

