

ALL OF LOT 204, TR. No 22402, M.B. 606-86/90.

RECORDED
MAY 21, 1959
23 2 P.M.
48

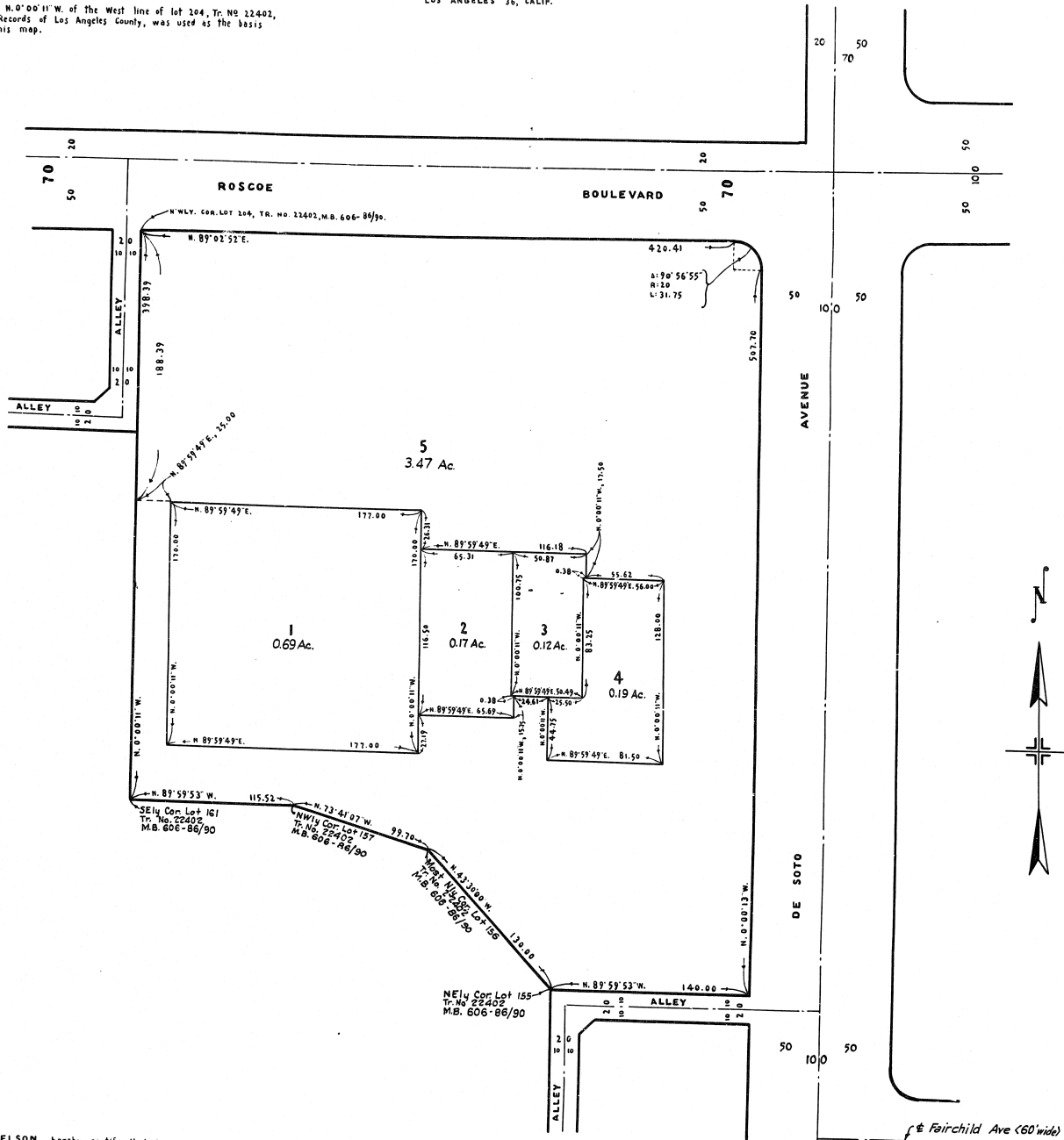
PREPARED BY: VOORHEIS-TRINDLE CO.
5919 VAN NUYS BLVD.
VAN NUYS, CALIF.

Solomon
Tree

FOR

GEORGE J. HELTZER
144 S. LA BREA AVE.
LOS ANGELES 36, CALIF.

The bearing N.0°00'11"W. of the West line of lot 204, Tr. No 22402, M.B. 606-86/90, Records of Los Angeles County, was used as the basis of bearings on this map.



I, C. R. NELSON, hereby certify that I am a Registered Civil Engineer of the State of California, and that this map, consisting of 1 sheet, made under my supervision in March, 1959 is true and complete with respect to all available record data.

C. R. Nelson
C.E. 8781

I hereby certify that the Board of Supervisors of the County of Los Angeles, State of California, on March 18, 1959 meeting in regular session approved the Assessor's system and manner of number the parcels shown on this map, in accordance with provisions Section 327 of the Revenue and Taxation Code.

Harold J. Ostly, County Clerk of the County of Los Angeles, State of California and ex-officio clerk of Board of Supervisors of said County.

By *Isabel Medina*
Deputy

Examined 4-27-59
John A. Lybie, County Engineer

By *Edward W. Price*
Deputy

COUNTY ENGINEERS COPY