

L.A.C.A. MAP No 86

IN THE UNINCORPORATED TERRITORY OF THE COUNTY OF LOS ANGELES
PORTION OF LOTS A, 2 & 3 TRACT 79 3359 RECORDED
IN BOOK 38 PAGES 17-19 INCL. OF MAPS, RECORDS OF
LOS ANGELES COUNTY, STATE OF CALIFORNIA.

RECORDED
AT REQUEST OF *[Signature]* Assessor
MARCH 2, 1961

11 MIN 12 P.M.

1500
1500
1500

OF MAP RECORDS
LOS ANGELES COUNTY CALIF.
RAY E LEE
COUNTY REGISTER
[Signature]

DECEMBER 1960

SCALE 1" = 100'

I, HANS C. THOMSEN, HEREBY CERTIFY THAT I AM A REGISTERED CIVIL ENGINEER OF THE STATE OF CALIFORNIA AND THIS MAP CONSISTING OF TWO SHEETS CORRECTLY REPRESENTS A SURVEY MADE UNDER MY SUPERVISION IN DECEMBER 1960, THAT THE SURVEY IS TRUE AND COMPLETE AS SHOWN; THAT THE MONUMENTS SHOWN HEREON ARE IN PLACE; THAT THEIR POSITIONS AND CHARACTER ARE CORRECTLY SHOWN AND THAT SAID MONUMENTS ARE SUFFICIENT TO ENABLE THE SURVEY TO BE RETRACED.

BASIS OF BEARINGS:
THE BEARING N. 69° 07' 10" W. AS SHOWN ON THE NORTHERLY BOUNDARY OF TRACT NO 20580 M.B. 52-28-32 WAS USED AS THE BASIS OF BEARINGS SHOWN ON THIS MAP.

[Signature]
HANS C. THOMSEN, R.C.E. 8244

Examined February 14, 1961
John A. Lambie, County Engineer

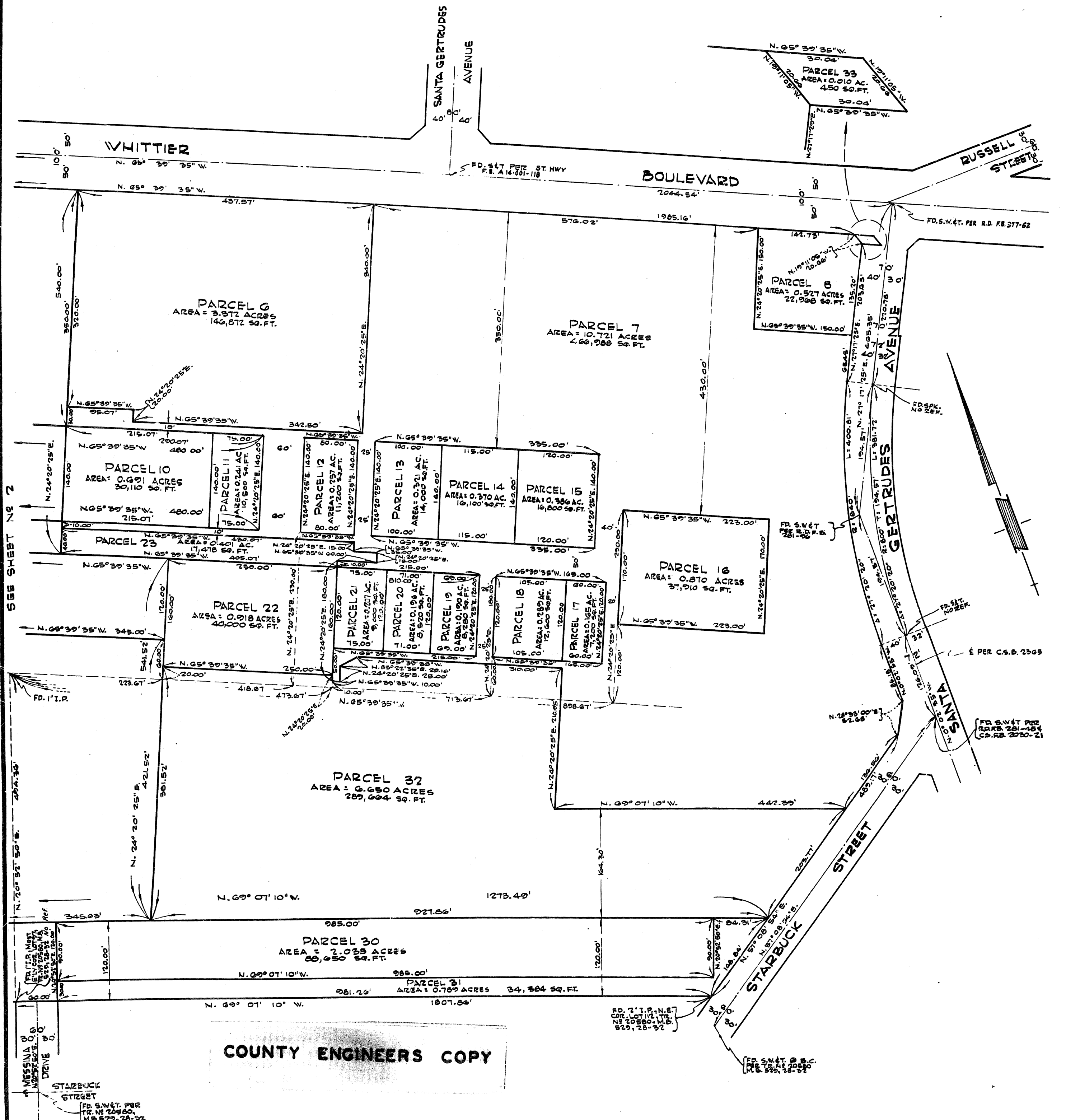
By *[Signature]*
Deputy

I hereby certify that the Board of Supervisors of the County of Los Angeles, State of California, in its meeting in regular session approved the Assessor's system and manner of numbering the parcels shown on this map, in accordance with the Provisions of Section 327 of the Revenue and Taxation Code.

Gordon T. Nesvig, Clerk of the Board of Supervisors of said County.

By *[Signature]*
Deputy

File



COUNTY ENGINEERS COPY

