

L.A.C.A. MAP NO. 88

PARTLY IN THE CITY OF LOS ANGELES AND PARTLY IN THE UN-
INCORPORATED TERRITORY OF LOS ANGELES COUNTY, CALIFORNIA

BEING ALL OF TRACT NO. 25165 AS PER
MAP RECORDED IN BOOK 674 PAGES 30 TO 34 INCL., OF
MAPS, RECORDS OF LOS ANGELES COUNTY, CALIFORNIA

RECORDED
AT REQUEST OF ASSESSOR
July 25, 1961
MIN. 6 PAST 4 PM
IN BOOK 674
AT PAGE 53
OF ASSESSOR'S MAPS
RECORDS OF
LOS ANGELES COUNTY, CALIF.
TAY E. LEE
COUNTY RECORDER
BY *S. Walter*
DEPUTY

Free

I, Harvey T. Brandt, hereby certify that I am a
Registered Civil Engineer of the State of Calif-
ornia and that this map, consisting of
Eighteen sheets, is true and complete
with respect to public record.

Harvey T. Brandt
Harvey T. Brandt R.C.E. 7078
Chief Deputy County Engineer

The bearing of N. 52° 40' 22" E., as shown on
the E of Washington Street Tract No. 25165,
M.B. 674 - 30 to 34 Records of Los Angeles
County, was used as basis of bearings for
this map.

I hereby certify that the Board of Super-
visors of the County of Los Angeles, State of
California, on *July 25, 1961*, meeting in
regular session approved the Assessor's
system and manner of numbering the
parcels shown on this map, in accordance
with provisions of Section 327 of the
Revenue and Taxation Code.

Gordon T. Nesvig, Clerk of the Board
of Supervisors of Said County

By *Evelyn Fodor*
Deputy

COUNTY ENGINEERS COPY

Examined *July 19, 1961*
John A. Lambie, County Engineer

By *Richard B. Dickson*
Deputy

L.A.C.A. MAP NO.88

PARTLY IN THE CITY OF LOS ANGELES AND PARTLY IN THE
UNINCORPORATED TERRITORY OF LOS ANGELES COUNTY, CALIFORNIA

COUNTY ENGINEERS COPY

RECORDED

AT REQUEST OF ASSESSOR

July 25 1961

6:44 PM

IN BOOK 1 PAGE 54

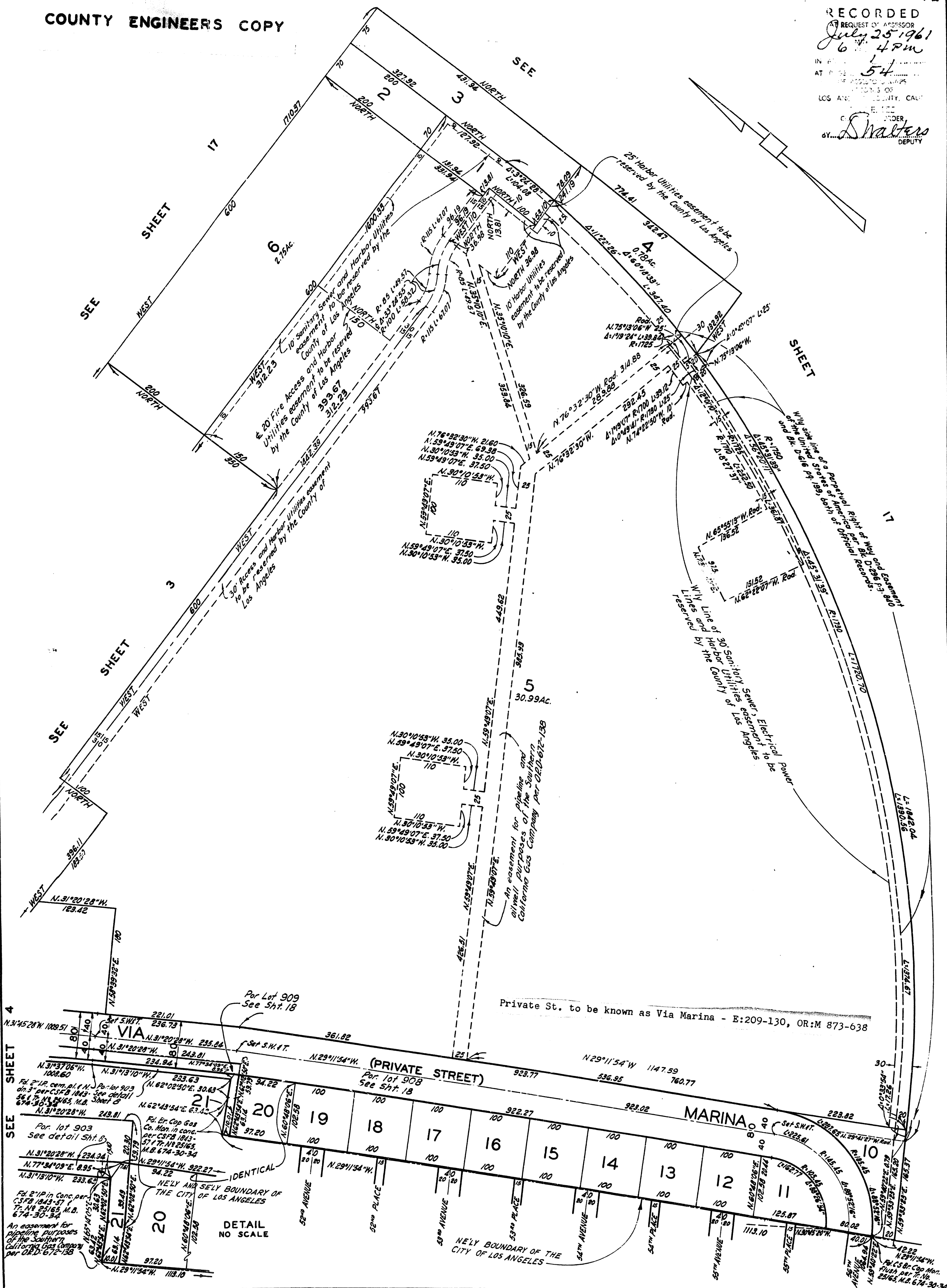
OF RECORDS

LOS ANGELES COUNTY, CALIF.

ORDER

BY *Snalters*

DEPUTY

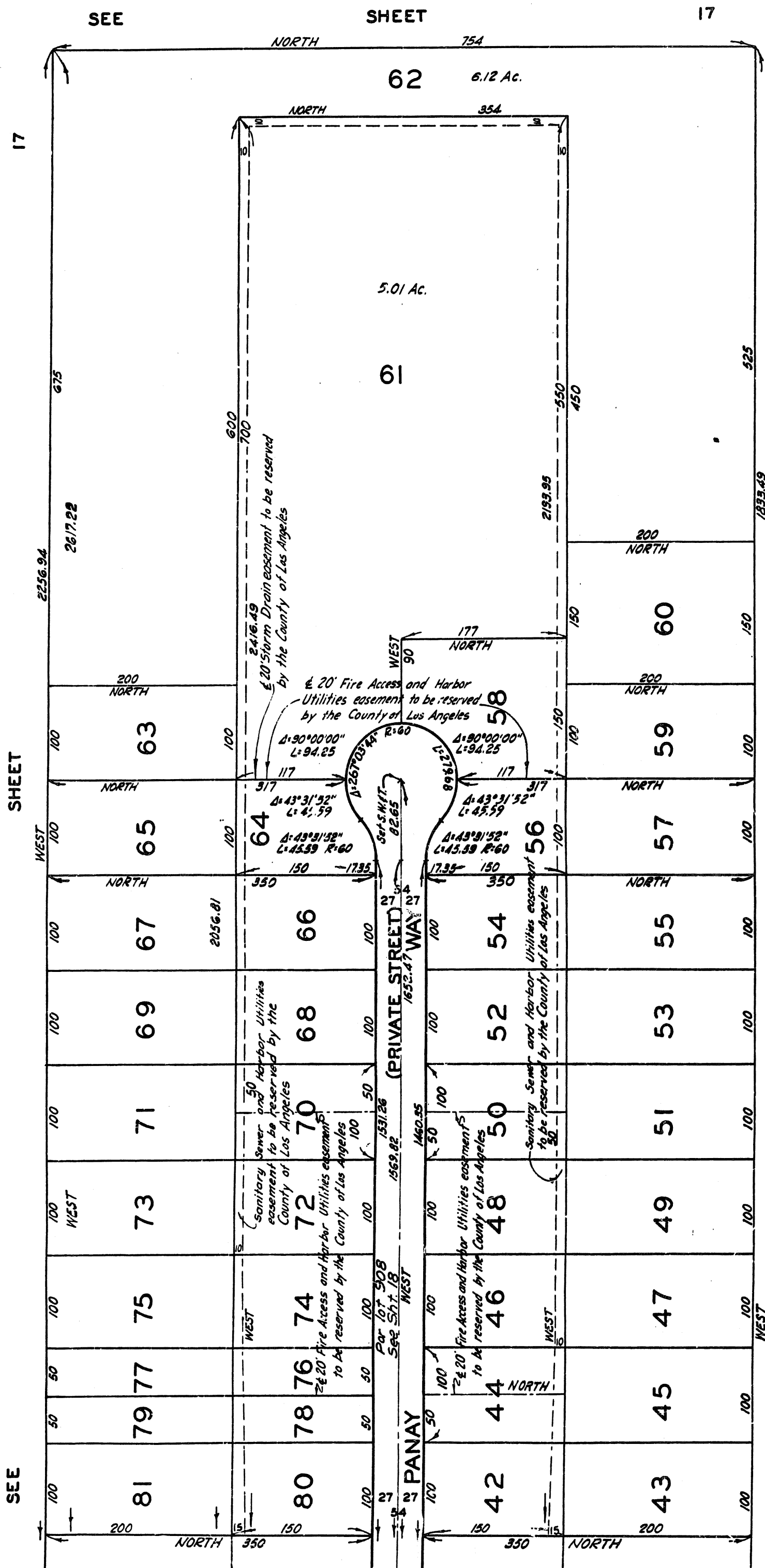


L.A.C.A. MAP NO. 88

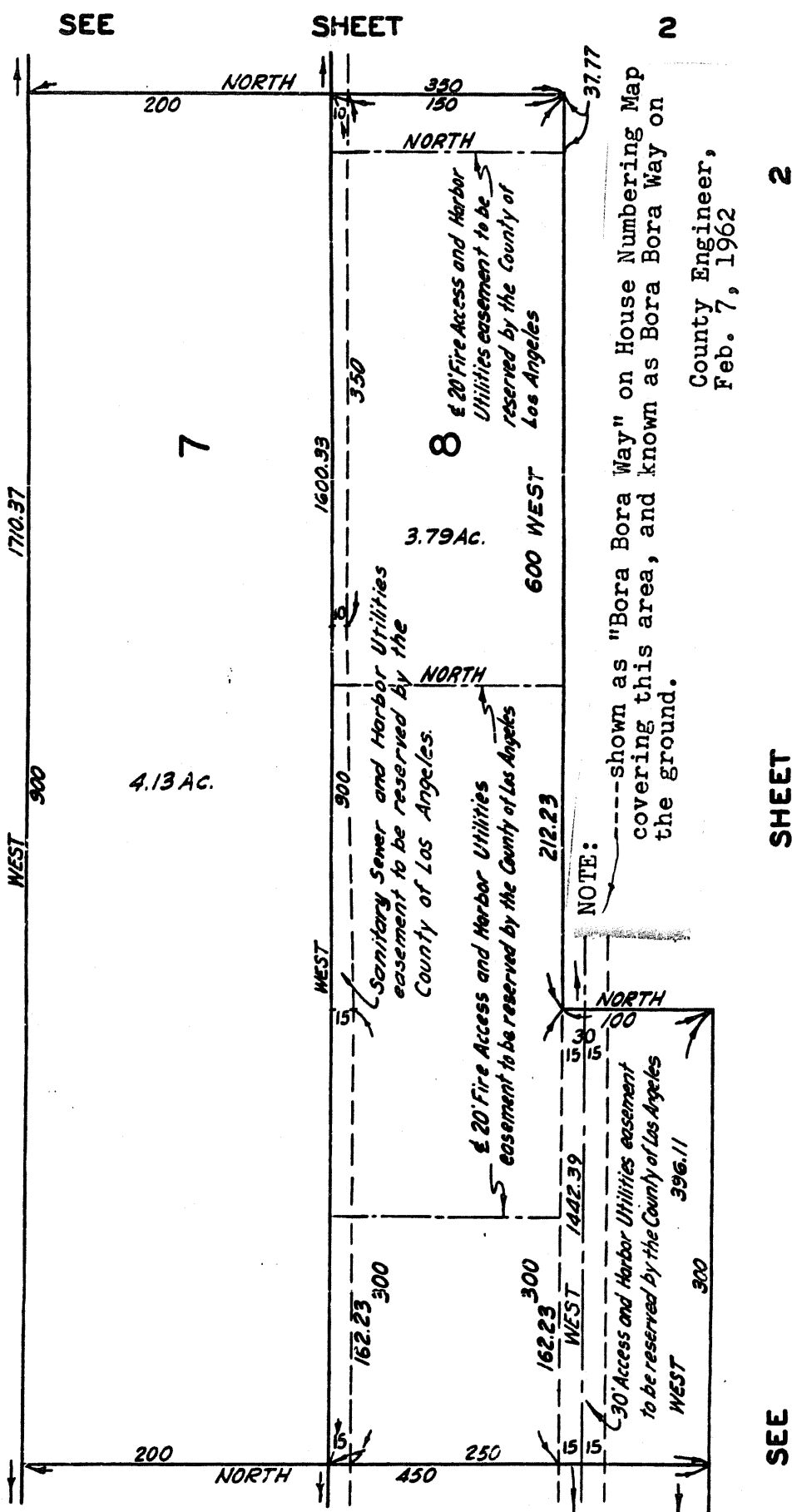
PARTLY IN THE CITY OF LOS ANGELES AND PARTLY IN THE
UNINCORPORATED TERRITORY OF LOS ANGELES COUNTY, CALIFORNIA

COUNTY ENGINEERS COPY

RECORDED
AT REQUEST OF ASSESSOR
July 25 1961
6:44 PM
IN BOOK 155
AT PA 55
LOS ANGELES COUNTY, CALIF.
RAY E. LEE
COUNTY RECORDER
Deputy



NOTE: Panay (Private Street) Way is shown as Tahiti Way on the House Numbering Map covering this area, and is known as Tahiti Way on the ground.
County Engineer,
Feb. 7, 1962



NOTE: ---shown as "Bora Bora Way" on House Numbering Map covering this area, and known as Bora Bora Way on the ground.

County Engineer,
Feb. 7, 1962

L.A.C.A. MAP NO. 88

PARTLY IN THE CITY OF LOS ANGELES AND PARTLY IN THE UNINCORPORATED TERRITORY OF LOS ANGELES COUNTY, CALIFORNIA

COUNTY ENGINEERS COPY

RECORDED

AT REQUEST OF ASSESSOR

July 25 1961

IN BOOK 156

AT 56

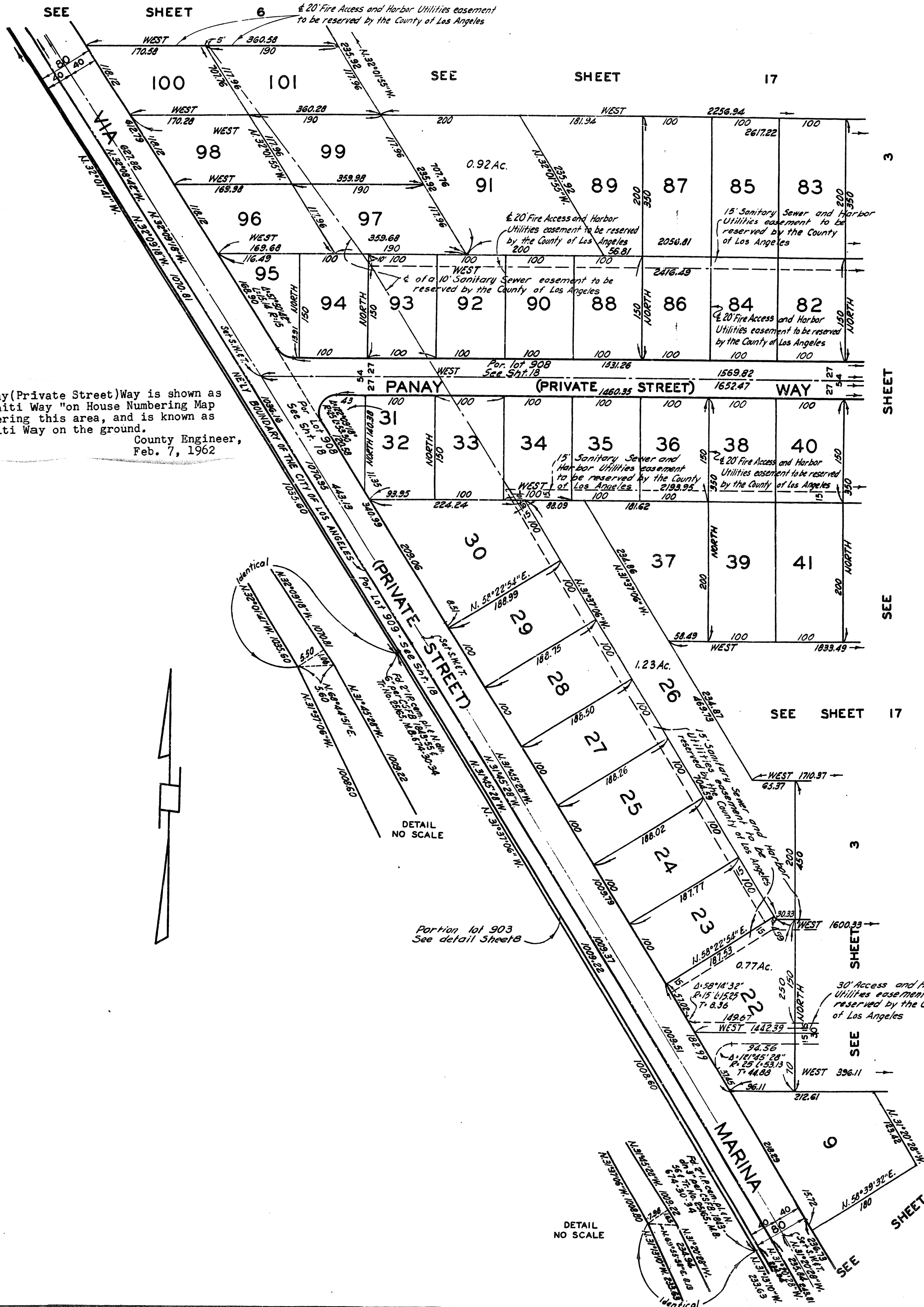
LOS ANGELES COUNTY, CALIF.

E. LEE

RECORDER

D. Walters DEPUTY

Private St. to be known as Via Marina - E:209-130,OR:M 873-638



NOTE: Panay (Private Street) Way is shown as "Tahiti Way" on House Numbering Map covering this area, and is known as Tahiti Way on the ground.

County Engineer,
Feb. 7, 1962

NOTE: The 30' Access & Harbor Utilities easement to be reserved by County of Los Angeles is shown as "Bora Bora Way" on the House Numbering Map covering this area, and is known as Bora Bora Way on the ground.

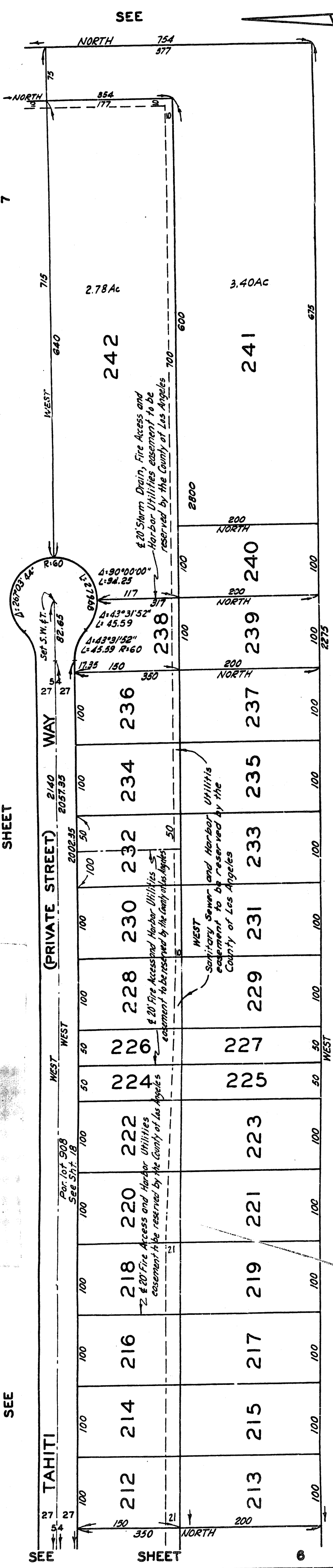
County Engineer
Feb. 7, 1962

L.A.C.A. MAP NO.88

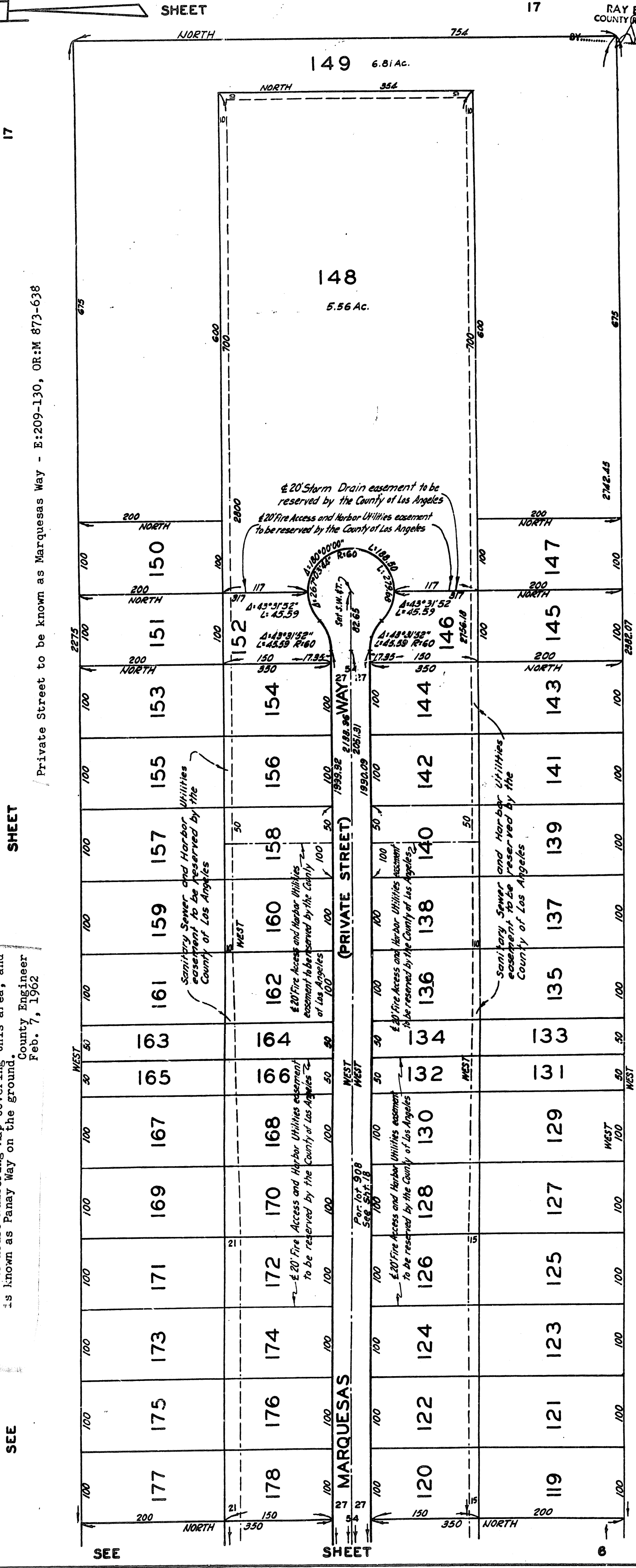
PARTLY IN THE CITY OF LOS ANGELES AND PARTLY IN THE UNINCORPORATED TERRITORY OF LOS ANGELES COUNTY, CALIFORNIA

RECORDED
AT REQUEST OF ASSESSOR
JULY 25 1961
P.M.
IN BOOK 57
AT PAGE 57
OF ASSESSOR'S MAPS
RECORDS OF
LOS ANGELES COUNTY, CALIF.
RAY E. LEE
COUNTY RECORDER
Walter
DEPUTY

COUNTY ENGINEERS COPY



NOTE: Tahiti (Private Street) Way is shown as "Panay Way" on the House Numbering Map covering this area, and is known as Panay Way on the ground.
County Engineer
Feb. 7, 1962



SEE

SEE

SEE

SHEET

SHEET

SHEET

7

17

17

SCALE 1" = 100'

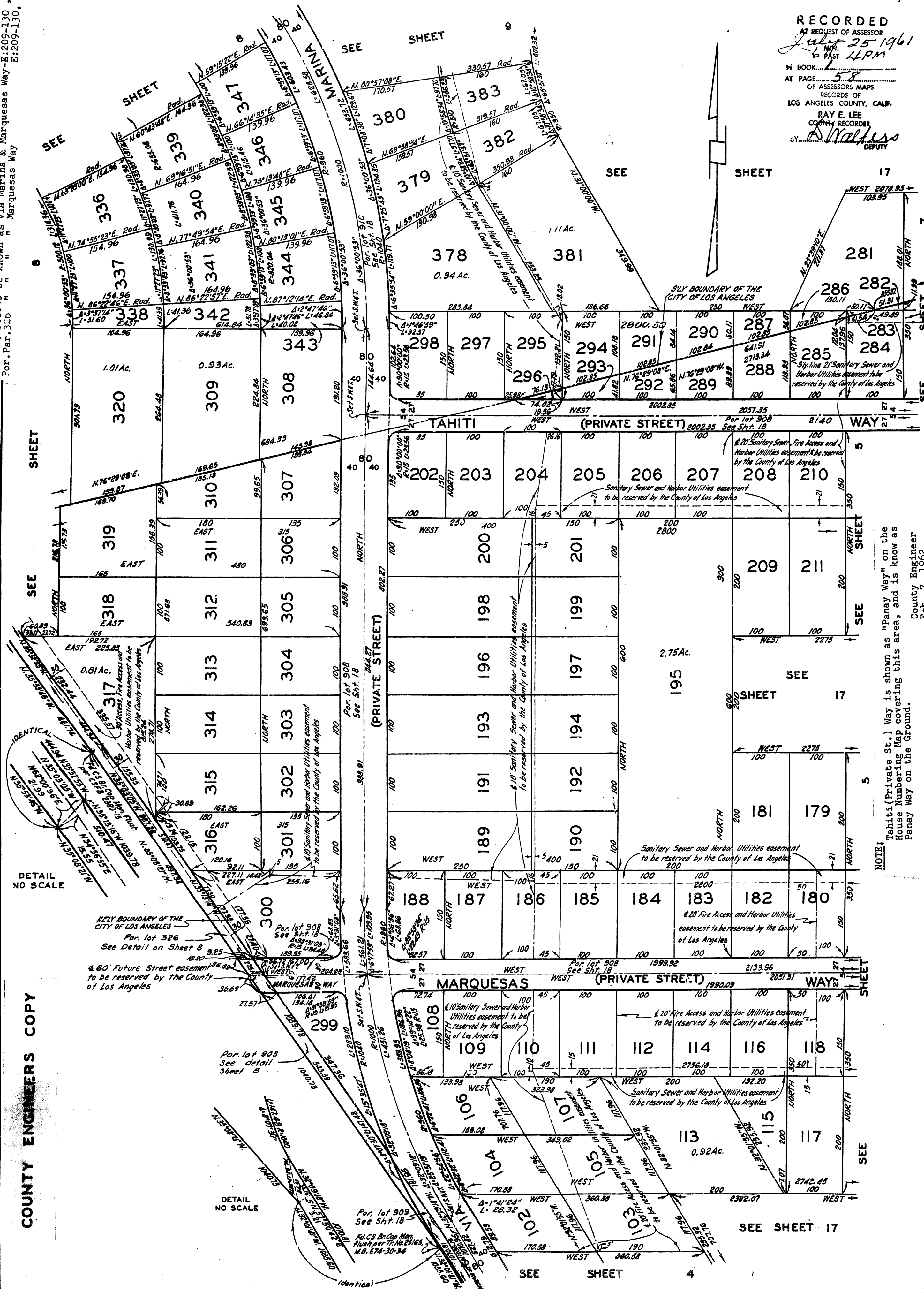
L.A.C.A. MAP NO.88

PARTLY IN THE CITY OF LOS ANGELES AND PARTLY IN THE UNINCORPORATED TERRITORY OF LOS ANGELES COUNTY, CALIFORNIA

196

RECORDED
AT REQUEST OF ASSESSOR
July 25 1961
6 PM
IN BOOK...
AT PAGE...
OF ASSESSOR'S MAPS
RECORDS OF
LOS ANGELES COUNTY, CALIF.
RAY E. LEE
COUNTY RECORDER
BY...
DEPUTY

Private Sts. to be known as Via Marina & Marquesas Way E:209-130, OR:M 873-638
For Par. 320 " " " Marquesas Way E:209-130, OR:M 873-638



NOTE:
Tahiti (Private St.) Way is shown as "Panay Way" on the House Numbering Map covering this area, and is known as Panay Way on the Ground.
County Engineer
Feb. 7, 1962

COUNTY ENGINEERS COPY

SCALE 1" = 100'

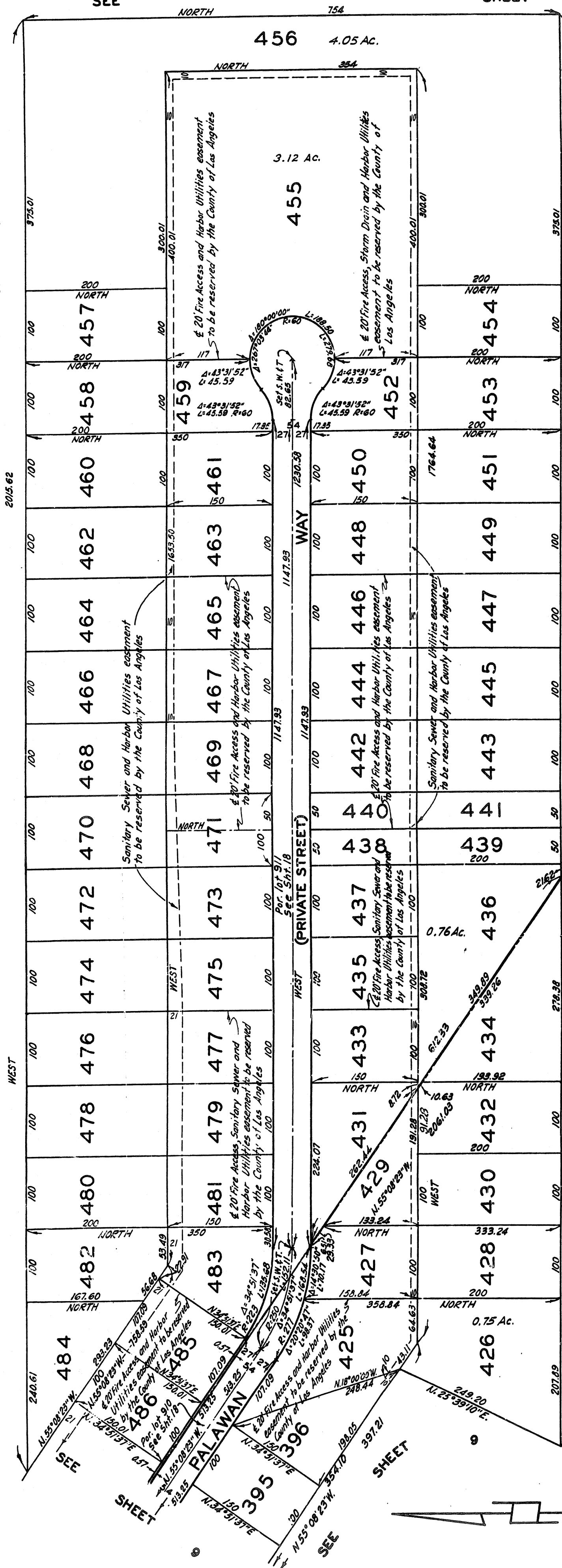
PARTLY IN THE CITY OF LOS ANGELES AND PARTLY IN THE
UNINCORPORATED TERRITORY OF LOS ANGELES COUNTY, CALIFORNIA

SEE SHEET

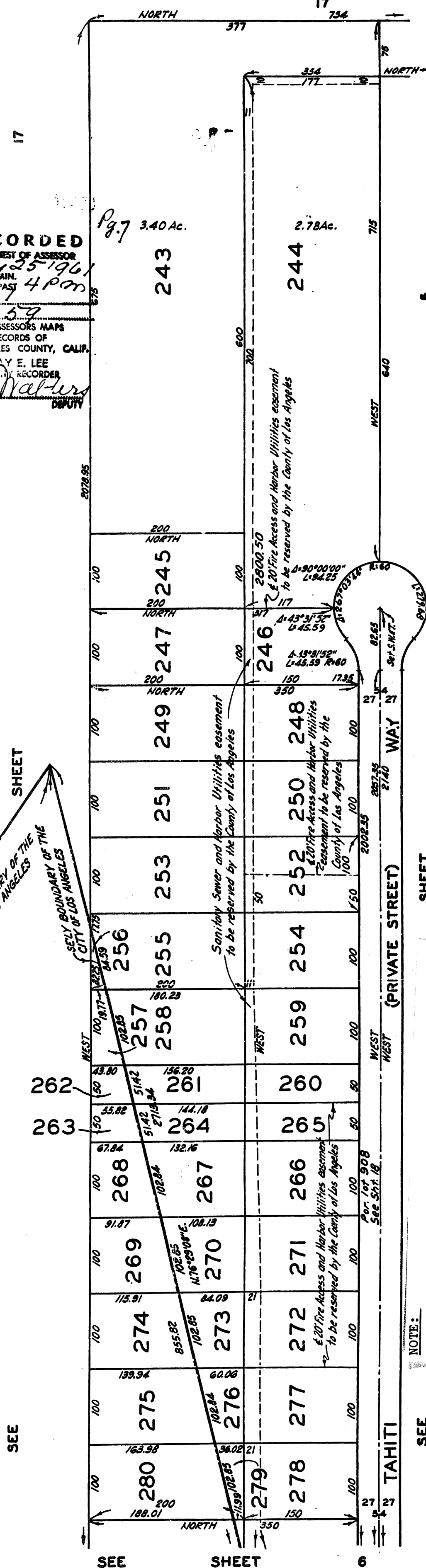
COUNTY ENGINEERS COPY

LEHS

Private St. to be known as Palawan Way - E:209-130,OR:M873-638
Lots 183 to 188 incl. Quitclaimed to County - O.R.D 3118-366(Q.C.)



RECORDED
 AT REQUEST OF ASSESSOR
July 25 1966
 6 MIN. 7 4 PM
 IN BOOK.....
 AT PAGE *59*.....
 OF ASSESSORS MAPS
 RECORDS OF
 LOS ANGELES COUNTY, CALIF.
 RAY E. LEE
 COUNTY RECORDER
 BY *L. Walters*



LEHS

NOTE:

ESS

Tahiti(Private St.)Way is shown as"Panay Way" on the House Numbering Map covering this area, and is known as Panay Way on the ground. County Engineer, 2- 7 - 62

County Engineer, 2-7-62

SCALE 1" = 100'

L.A.C.A. MAP NO.88

PARTLY IN THE CITY OF LOS ANGELES AND PARTLY IN THE
UNINCORPORATED TERRITORY OF LOS ANGELES COUNTY, CALIFORNIA

COUNTY ENGINEERS COPY

RECORDED

AT REQUEST OF ASSESSOR
July 25 1961
MIN. 4 PM
PAST

IN BOOK 60

AT PAGE 60

OF ASSESSOR'S MAPS

RECORDS OF

LOS ANGELES COUNTY, CALIF.

RAY E. LEE

COUNTY RECORDER

BY *S. Walters*

DEPUTY

SHEET

ADMIRALTY WAY

PRIVATE STREET

VIA

STREET

OCEAN AVENUE

GRAYSON AVENUE

CLUNE AVENUE

DELL AVENUE

WASHINGTON

377

376

375

374

373

372

371

370

369

368

367

366

365

364

363

362

361

360

359

358

357

356

355

354

353

352

351

350

349

348

347

346

345

344

343

342

341

340

339

338

337

336

335

334

333

332

331

330

329

328

327

326

325

324

323

322

321

320

319

318

317

316

315

314

313

312

311

310

309

308

307

306

305

304

303

302

301

300

299

298

297

296

295

294

293

292

291

290

289

288

287

286

285

284

283

282

281

280

279

278

277

276

275

274

273

272

271

270

269

268

267

266

265

264

263

262

261

260

259

258

257

256

255

254

253

252

251

250

249

248

247

246

245

244

243

242

241

240

239

238

237

236

235

234

233

232

231

230

229

228

227

226

225

224

223

222

221

220

219

218

217

216

215

214

213

212

211

210

209

208

207

206

205

204

203

202

201

200

199

198

197

196

195

194

193

192

191

190

189

188

187

186

185

184

183

182

181

180

179

178

177

176

175

174

173

172

171

170

169

168

167

166

165

164

163

162

161

160

159

158

157

156

155

154

153

152

151

150

149

148

147

146

145

144

143

142

141

140

139

138

137

136

135

134

133

132

131

130

129

128

127

126

125

124

123

122

121

120

119

118

117

116

115

114

113

112

111

110

109

108

107

106

105

104

103

102

101

100

99

98

97

96

95

94

93

92

91

90

89

88

87

86

85

84

83

82

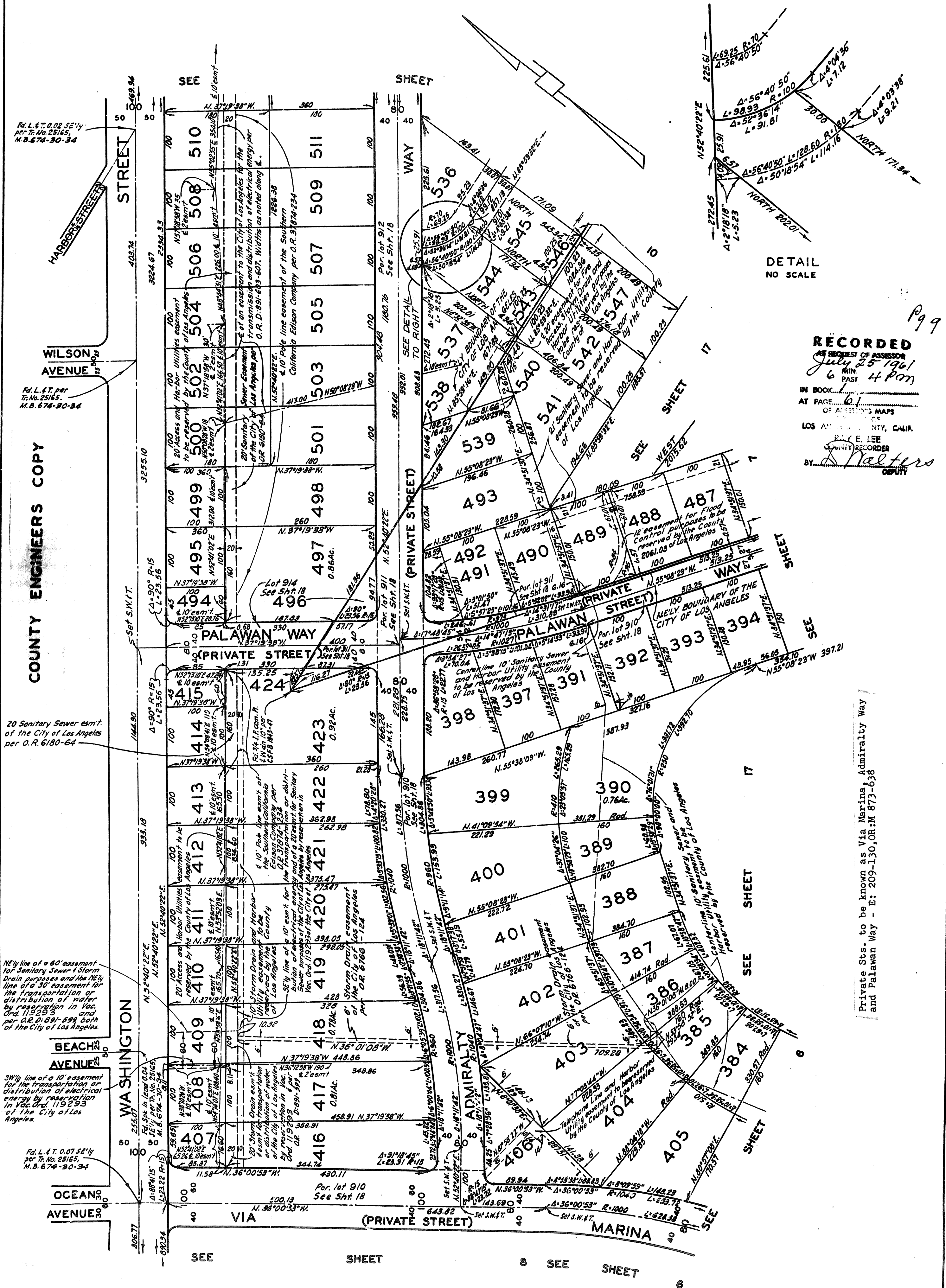
81

80

79

L.A.C.A. MAP NO. 88

PARTLY IN THE CITY OF LOS ANGELES AND PARTLY IN THE UNINCORPORATED TERRITORY OF LOS ANGELES COUNTY, CALIFORNIA



DETAIL
NO SCALE

RECORDED

July 25 1961
6 4 pm

IN BOOK 1

AT PAGE 61

OF AMERICAN MAPS

LOS ANGELES COUNTY, CALIF.

RAY E. LEE

COUNTY RECORDER

BY *A. Walters*

DEPUTY

Private Sts. to be known as Via Marina, Admiralty Way
and Palawan Way - E: 209-130, OR: M 873-638

L.A.C.A. MAP NO. 88

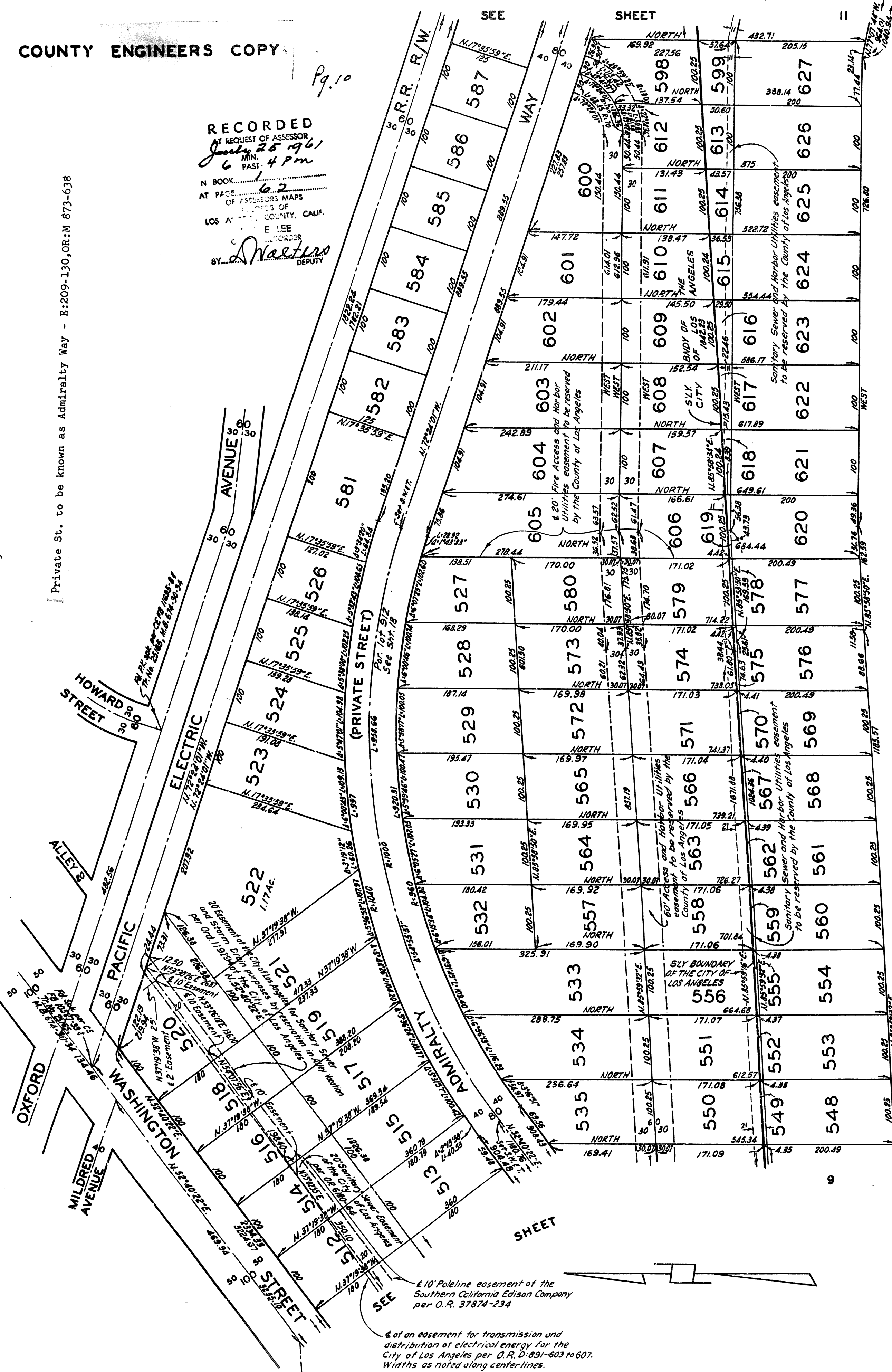
PARTLY IN THE CITY OF LOS ANGELES AND PARTLY IN THE UNINCORPORATED TERRITORY OF LOS ANGELES COUNTY, CALIFORNIA

COUNTY ENGINEERS COPY

RECORDED
AT REQUEST OF ASSESSOR
July 25 1961
MIN. 4 PM
N BOOK 62
AT PAGE 62
OF ASSESSORS MAPS
OF LOS ANGELES COUNTY, CALIF.
BY E. LEE
DEPUTY

Pg. 10

Private St. to be known as Admiralty Way - E:209-130, OR:M 873-638



SHEET

SHEET

SEE

SEE

WEST

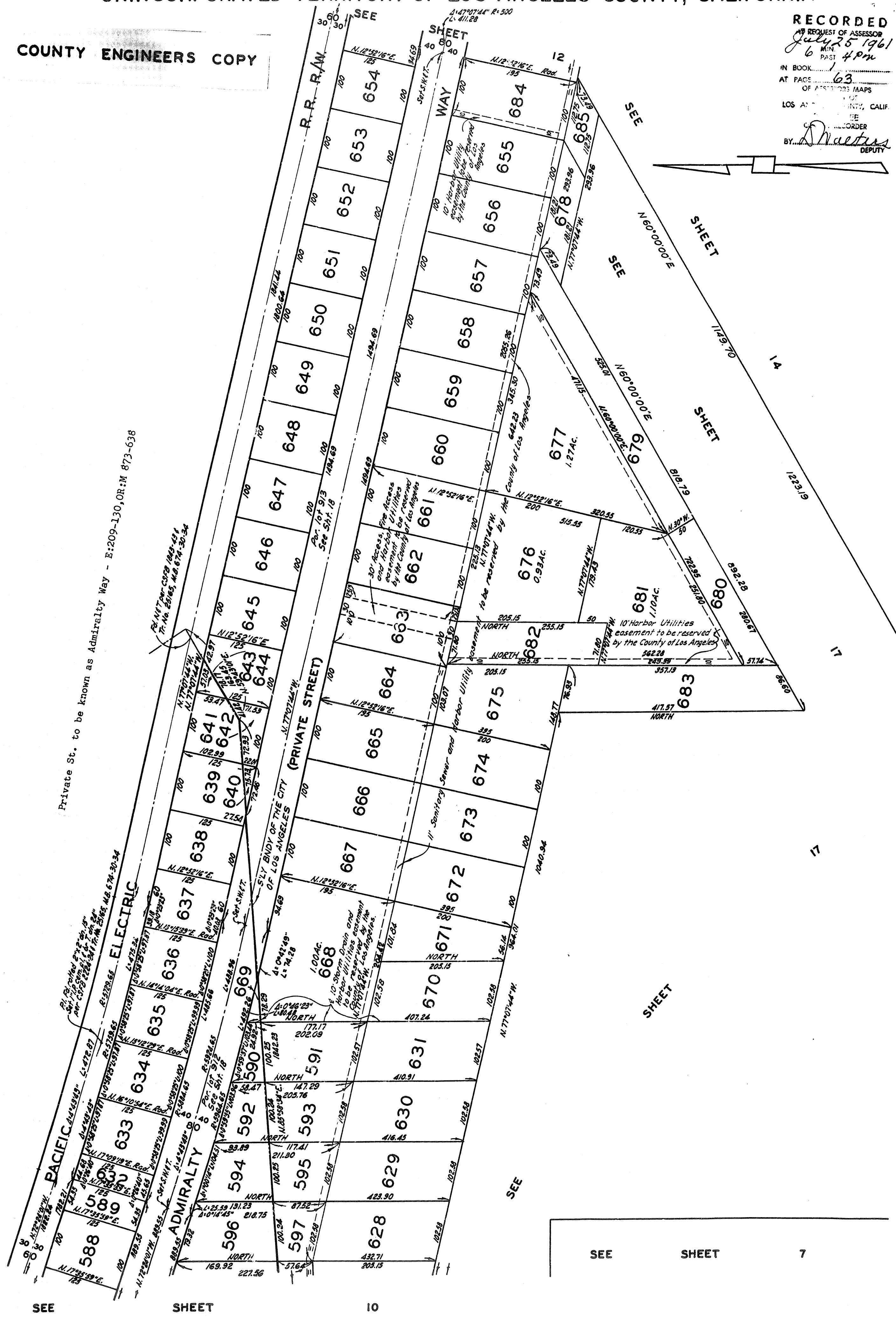
SCALE 1" = 100'

L.A.C.A. MAP NO. 88

PARTLY IN THE CITY OF LOS ANGELES AND PARTLY IN THE
UNINCORPORATED TERRITORY OF LOS ANGELES COUNTY, CALIFORNIA

COUNTY ENGINEERS COPY

RECORDED
AT REQUEST OF ASSESSOR
July 25 1961
6:48 PM
IN BOOK 1
AT PAGE 63
OF ASSESSOR'S MAPS
LOS ANGELES COUNTY, CALIF.
BY *S. Maestas*
DEPUTY



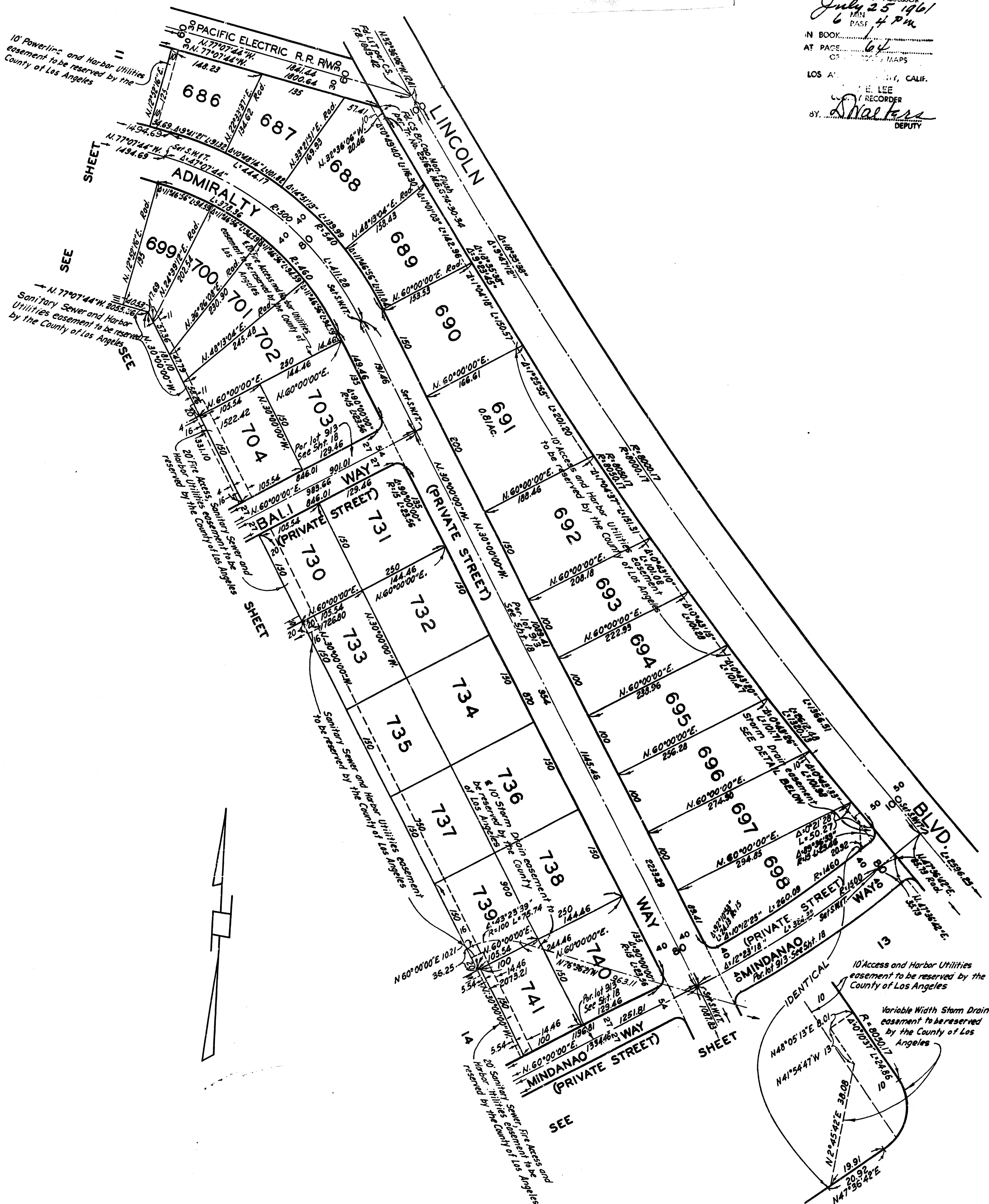
L.A.C.A. MAP NO. 88

PARTLY IN THE CITY OF LOS ANGELES AND PARTLY IN THE
UNINCORPORATED TERRITORY OF LOS ANGELES COUNTY, CALIFORNIA

COUNTY ENGINEERS COPY

Pg 12

RECORDED
REQUEST OF ASSESSOR
July 25 1961
MAN
DATE 4 PM
IN BOOK
AT PAGE 64
OF 1000 MAPS
LOS ANGELES COUNTY, CALIF.
E. LEE
RECORDER
BY: Shalters
DEPUTY



Private St. to be known as Mindanao Way & Admiralty Way - E:209-130,OR:M 873-638

DETAIL
NO SCALE

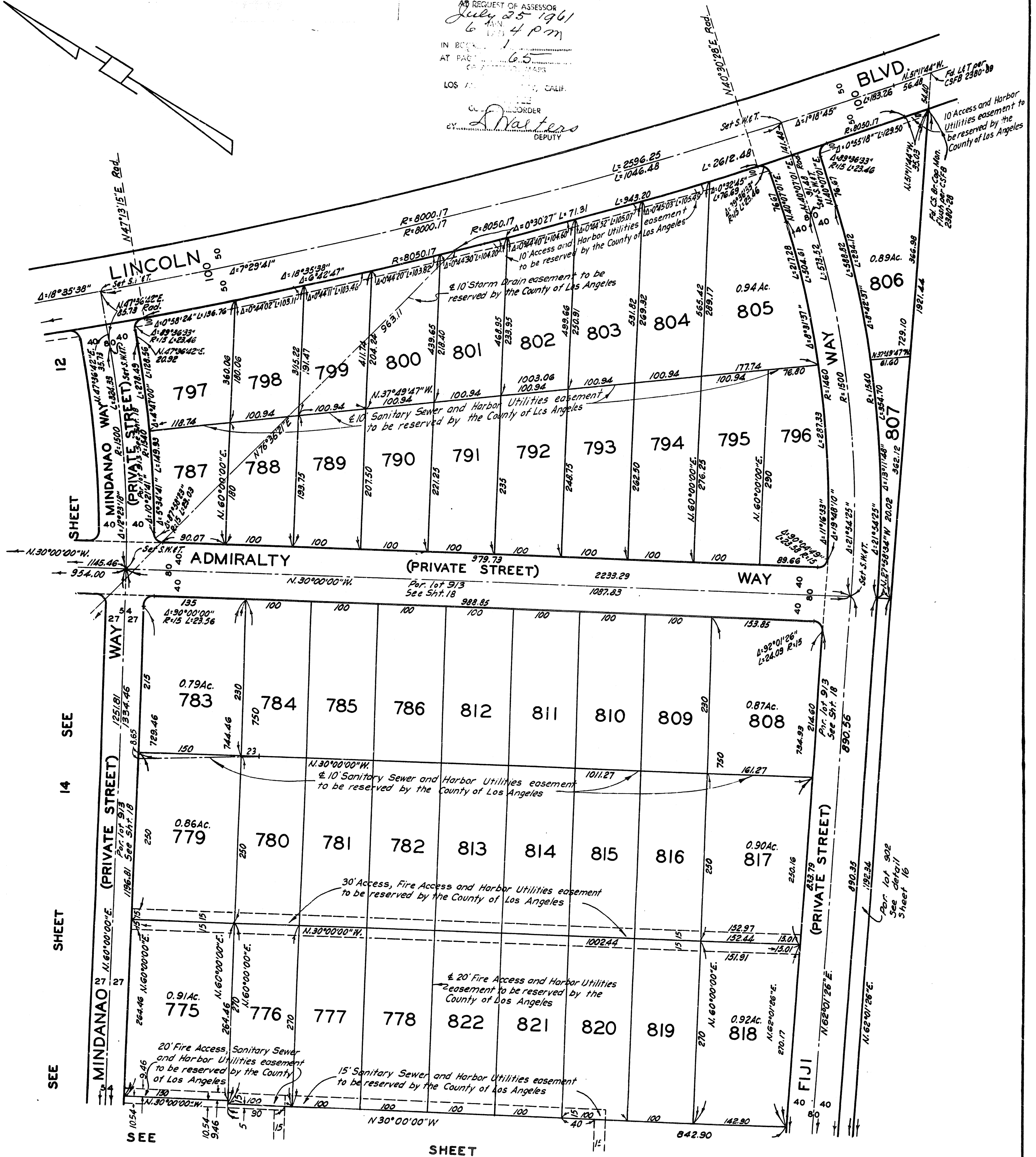
L.A.C.A. MAP NO. 88

PARTLY IN THE CITY OF LOS ANGELES AND PARTLY IN THE
UNINCORPORATED TERRITORY OF LOS ANGELES COUNTY, CALIFORNIA

COUNTY ENGINEERS COPY

RECORDED
AT REQUEST OF ASSESSOR
July 25 1961
6 10 4 PM
IN BOOK 1
AT PAGE 65
OF RECORD MAPS
LOS ANGELES COUNTY, CALIF.
C. J. WATERS
DEPUTY

Pg. 13



Private St. to be known as Admiralty Way, Mindanao Way
& Fiji Way - E:209-130, OR:M 873-638

RECORDED
AT REQUEST OF ASSESSOR
July 25 1961
6 MIN.
PAST 4 P.M.
IN BOOK
AT PAGE 66
OF ASSESSORS MAPS
RECORDS OF
LOS ANGELES COUNTY, CALIF.
R. E. LEE
COUNTY RECORDER
BY D. Walters
DEPUTY

L.A.C.A. MAP NO.88

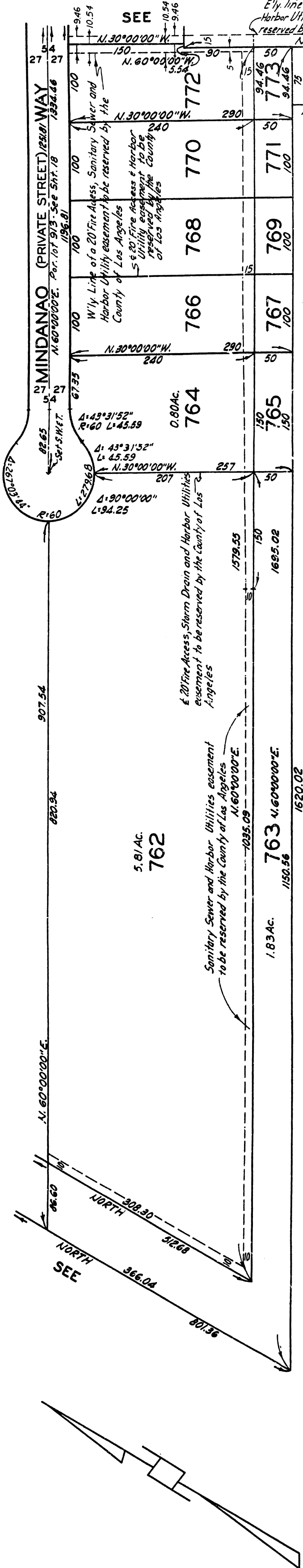
PARTLY IN THE CITY OF LOS ANGELES AND PARTLY IN THE
UNINCORPORATED TERRITORY OF LOS ANGELES COUNTY, CALIFORNIA

COUNTY ENGINEERS COPY

SHEET

SEE

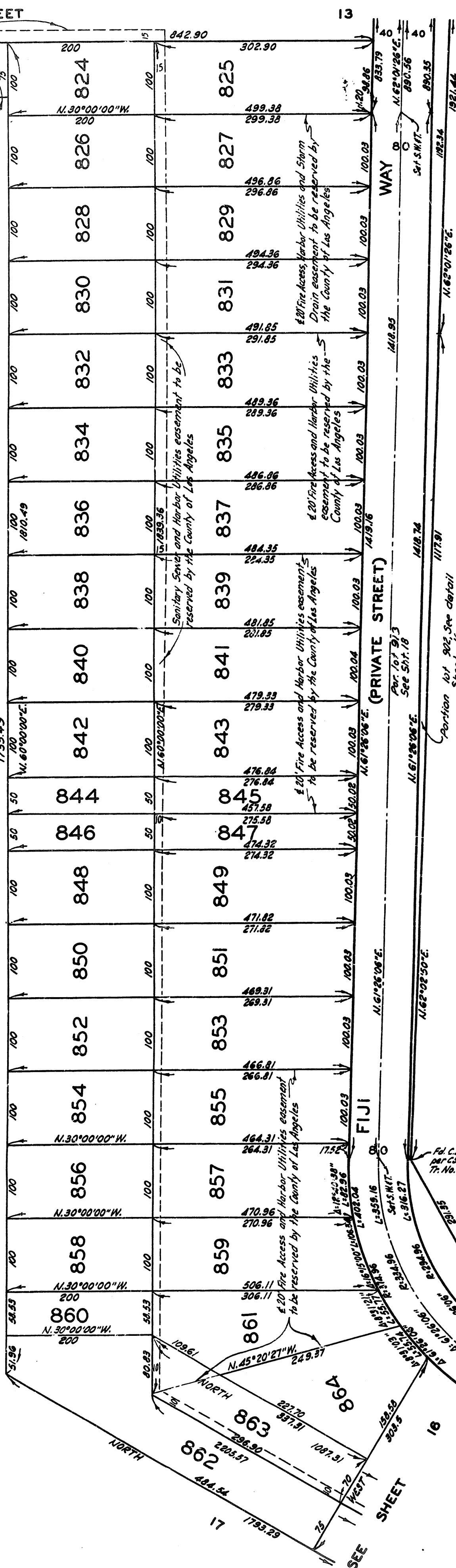
14



SHEET

SEE

17



RECORDED
REQUEST OF ASSESSOR
JULY 25 1961
6:47 PM
IN BOOK 1
AT PAGE 67
OF ASSESSOR'S MAPS
RECORDS OF
LOS ANGELES COUNTY, CALIF.
BY [Signature]
DEPUTY

Private Sts. to be known as Mindanao Way & Fiji Way - E:209-130, OR:M 873-638

See detail
Sheet 16

See detail
Sheet 16

L.A.C.A. MAP NO. 88

PARTLY IN THE CITY OF LOS ANGELES AND PARTLY IN THE
UNINCORPORATED TERRITORY OF LOS ANGELES COUNTY, CALIFORNIA

COUNTY ENGINEERS COPY

Private St. to be known as Fiji Way - E:209-130, OR:M 873-638

17

SHEET

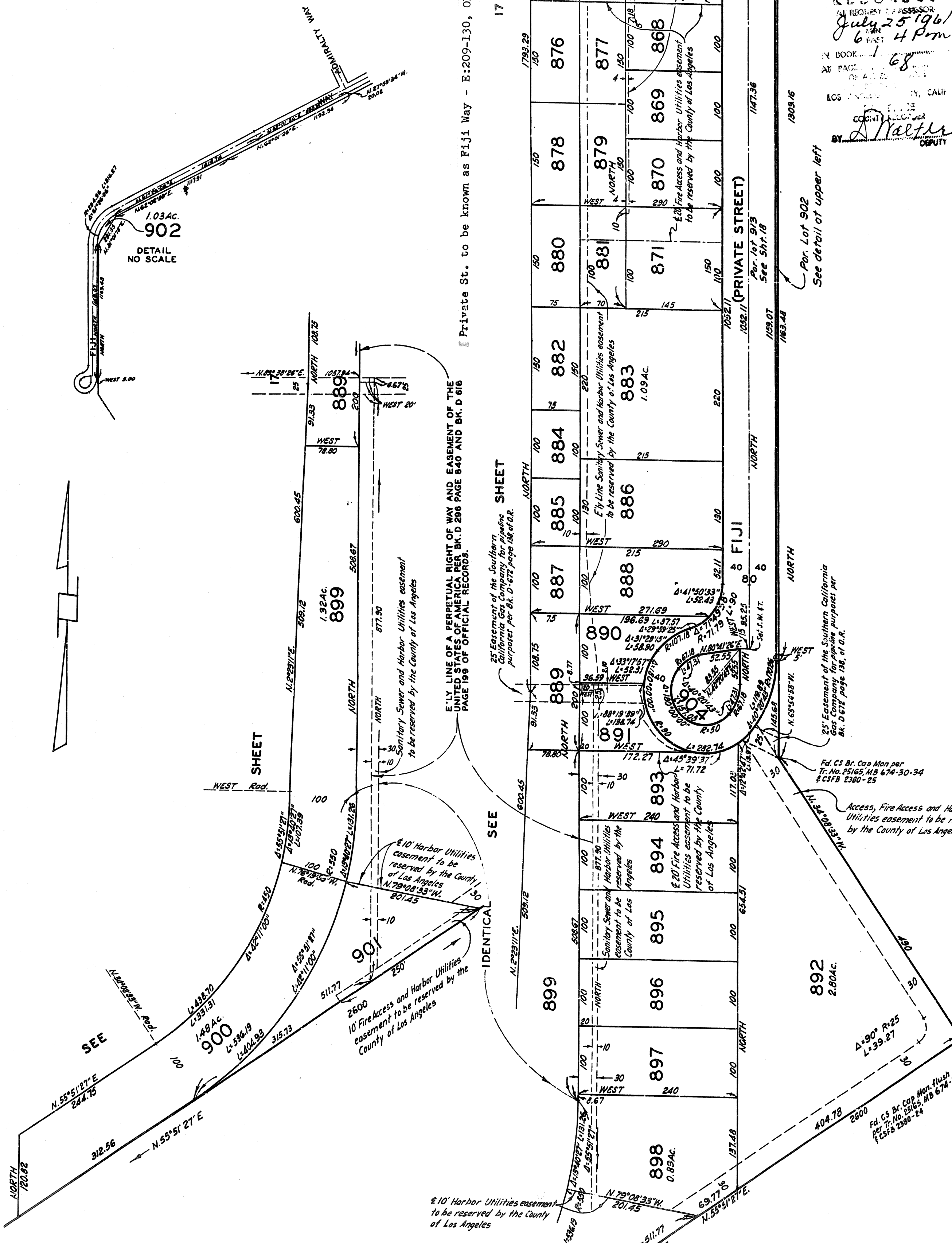
SEE

IDENTICAL

SEE

SEE

SEE



Fd. C.S. Br. Cap Mon. Fluth per
Tr. No. 25165, M.B. 674-30-34
C.S.F.B. 2380-26

RECORDED

July 25 1961
6 4 P.M.

IN BOOK 1 68

AT PAGE 68

LOS ANGELES, CALIF.

COUNTY ENGINEER

BY *[Signature]*

DEPUTY

See detail at upper left

Per Lot 902

See detail at upper left

25' Easement of the Southern California Gas Company for pipeline purposes per Bk. D 612 page 186 of O.R.

Fd. CS Br. Cap Mon per
Tr. No. 25165, M.B. 674-30-34
C.S.F.B. 2380-25

Access, Fire Access and Harbor
Utilities easement to be reserved
by the County of Los Angeles

892
2.80Ac.

404.78
2600
Fd. CS Br. Cap Mon. Fluth
per Tr. No. 25165, M.B. 674-30-34
C.S.F.B. 2380-24

L.A.C.A. MAP NO. 88

PARTLY IN THE CITY OF LOS ANGELES AND PARTLY IN THE UNINCORPORATED TERRITORY OF LOS ANGELES COUNTY, CALIFORNIA

RECORDED
IN REQUEST OF ACCESS
July 25 1961
6 PM
69
ORDER
Walters
DEPUTY

COUNTY ENGINEERS COPY

