

SCALE: 1"=80'

L.A.C.A. MAP NO. 90

IN THE CITY OF INGLEWOOD

BEING A PORTION OF THE NORTH HALF OF THE NORTHWEST QUARTER OF THE NORTHWEST QUARTER OF SECTION II TOWNSHIP 3 SOUTH RANGE 14 WEST SAN BERNARDINO BASE MERIDIAN IN THE CITY OF INGLEWOOD COUNTY OF LOS ANGELES STATE OF CALIFORNIA ACCORDING TO THE OFFICIAL PLAT OF SAID LAND FILED IN THE DISTRICT LAND OFFICE APRIL 22 1868

BARCLAY - PEARSON CO., INC.

BASIS OF BEARINGS

THE BEARING N0°08'03"E OF CRENSHAW BOULEVARD AS SHOWN ON MAP OF TRACT NO. 17995 M.B. 527/12-16 WAS TAKEN AS THE BASIS OF BEARINGS USED ON THIS MAP

RECORDED
AT
APRIL 3, 1962
13 11 P.M.

IN BOOK 1
PAGE 72
OF THE RECORDS
OF THE DISTRICT LAND OFFICE
LOS ANGELES COUNTY
CALIFORNIA
Ed Pearson
Free

I hereby certify that the Board of Supervisors of the County of Los Angeles, State of California, on April 3, 1962 meeting in regular session approved the Assessor's system and manner of numbering the parcels shown on this map, in accordance with the provisions of Section 327 of the Revenue and Taxation Code.

Gordon T. Neswig
Clerk of the Board of
Supervisors of said County

Ed Pearson
Deputy

I hereby certify that I am a registered Civil Engineer of the State of California; that this map consisting of two sheets correctly represents a true and complete survey made under my supervision December 6th, 1961; that the monuments of its character and locations shown hereon are in place; that said monuments are sufficient to enable the survey to be readily retraced.

Edward L. Pearson
Registered Civil Engineer No. 9783

Examined March 9, 1962
John A. Lambie, County Engineer

By *Richard B. Disher*
Deputy

COUNTY ENGINEERS COPY

SCALE: 1" = 80'

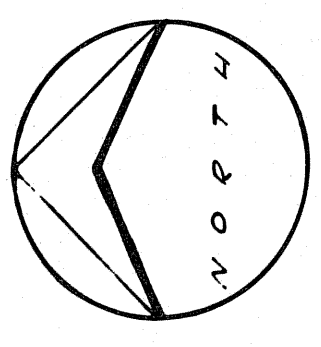
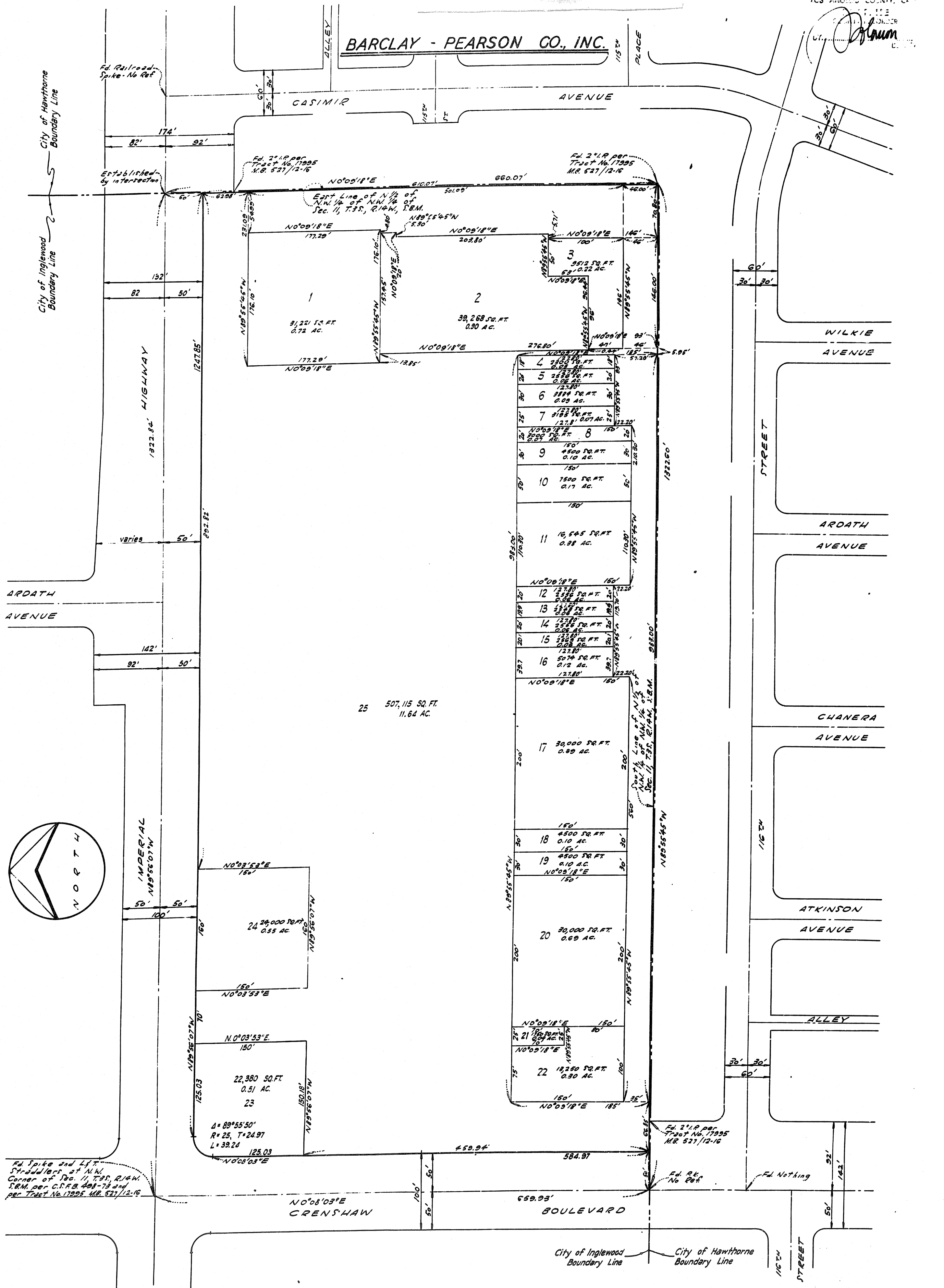
L.A.C.A. MAP NO. 90

IN THE CITY OF INGLEWOOD

COUNTY ENGINEERS COPY

PG. 2
RECORDED
APRIL 3, 1962
13
1 P.M.
BOOK 1
AT PAGE 73
OF ASSAYERS MAPS
RECORDS OF
LOS ANGELES COUNTY, CALIF.
COUNTY ENGINEER
Drum

BARCLAY - PEARSON CO., INC.



Fd Spike and Lft. Straddlers at NW Corner of Sec. 11, T.35, R.14W, S.8M, per C.S.F.B. 408-73 and per Tract No. 17995, M.R. 527/12-16

Fd. 2 1/2" per Tract No. 17995 M.R. 527/12-16

Fd. Rk. No Ret.

Fd. Nothing

City of Inglewood Boundary Line City of Hawthorne Boundary Line