

RECORDED  
 AT REQUEST OF ASSESSOR  
 FEB. 27, 1963  
 10 MIN. P.M.  
 IN BOOK 70  
 AT PAGE 70  
 OF ASSESSOR'S MAPS  
 RECORDS OF  
 LOS ANGELES COUNTY, CALIF.  
 RAY E. LEE  
 COUNTY RECORDER  
 BY *[Signature]* DEPUTY

IN THE CITY OF BURBANK  
 THE COUNTY OF LOS ANGELES  
 LOT 36, TRACT NO. 24108, AS PER MAP RECORDED IN BOOK  
 674 PAGES 10 to 12 OF MAPS, RECORDS OF LOS ANGELES  
 COUNTY, STATE OF CALIFORNIA.

BARCLAY - PEARSON CO., INC.

BASIS OF BEARINGS

THE BEARING N 22° 58' 50" W OF THE CENTERLINE OF PASS AVENUE AS  
 SHOWN ON MAP OF TRACT NO. 24108 RECORDED IN BOOK 674 PAGE 10 AND 12  
 OF MAPS WAS TAKEN AS THE BASIS OF BEARINGS USED ON THIS MAP

~~FILED~~  
 AT REQUEST OF BURBANK CITY OF  
 FEB. 27, 1963  
 10 MIN. P.M.  
 IN BOOK 70  
 AT PAGE 70  
 OF OFFICIAL MAPS  
 RECORDS OF LOS ANGELES COUNTY, CALIF.  
 RAY E. LEE  
 COUNTY RECORDER  
 BY *[Signature]* DEPUTY

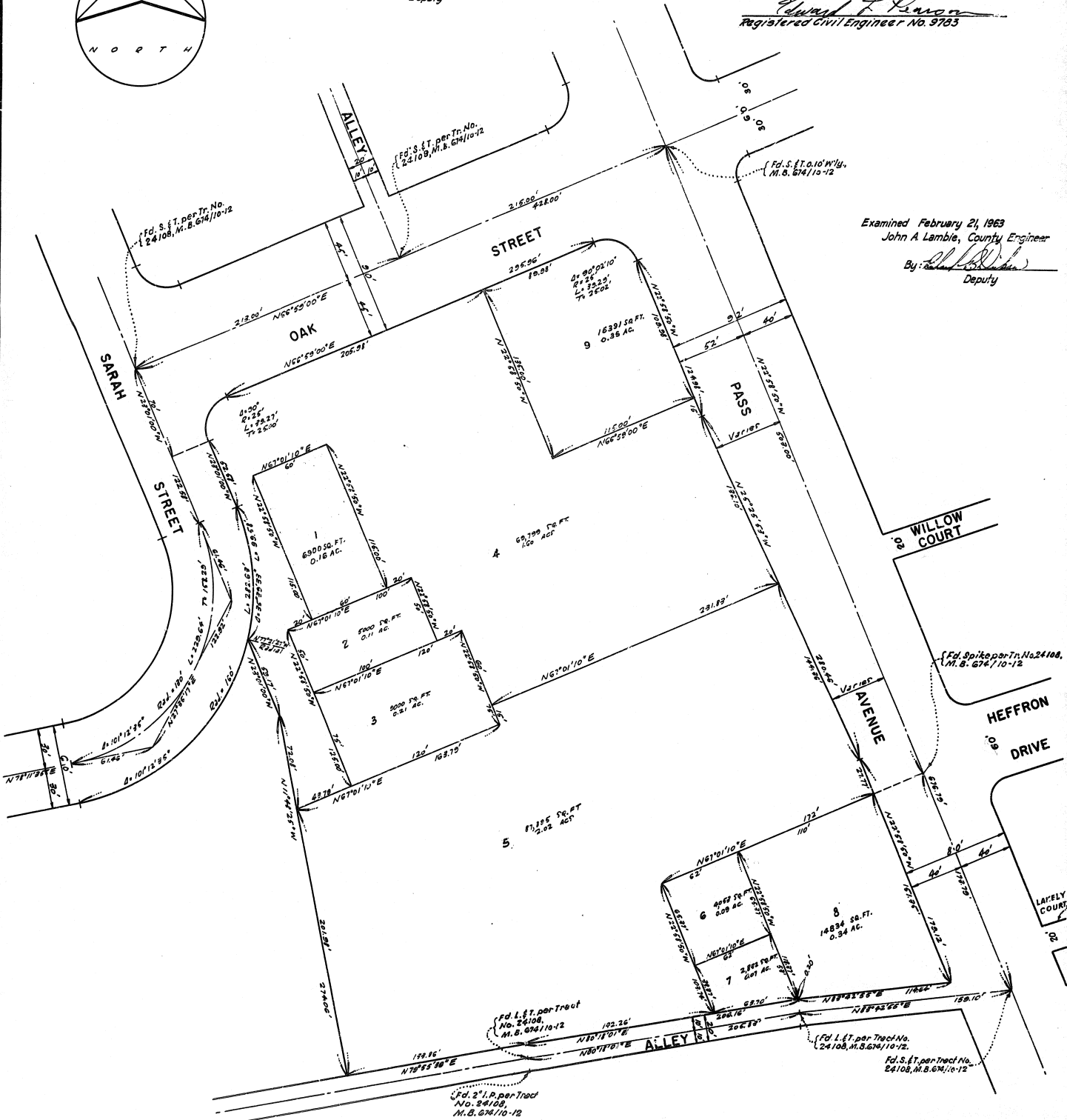
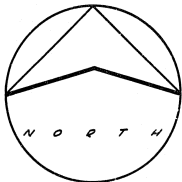
I hereby certify that the board of Supervisors of the County of Los Angeles, State  
 of California, on February 21, 1963, meeting in regular session approved the Assessor's  
 system and manner of numbering the parcels shown on this map, in accordance with the  
 provisions of Section 327 of the Revenue and Taxation Code.

I hereby certify that I am a registered Civil Engineer of the State of  
 California; that this map consisting of one sheet, and is true and  
 complete with respect to existing public records.

Gordon T. Mesvig, clerk of the Board of Supervisors  
 of said County.

By: *[Signature]*  
 Deputy

*[Signature]*  
 Registered Civil Engineer No. 9783



Examined February 21, 1963  
 John A. Lambie, County Engineer  
 By: *[Signature]*  
 Deputy