

L.A.C.A. MAP NO. 94

IN THE CITY OF LOS ANGELES,
COUNTY OF LOS ANGELES, STATE OF CALIFORNIA

THIS MAP IS COMPILED FROM SURVEYS OF THE CITY OF LOS ANGELES, COUNTY OF LOS ANGELES, MAPS AND DEEDS RECORDED IN THE OFFICE OF THE RECORDER OF THE COUNTY OF LOS ANGELES, STATE OF CALIFORNIA; BEING A DELINEATION

OF A PORTION OF THE LOS ANGELES CIVIC CENTER APPROVED BY THE COUNCIL OF THE CITY OF LOS ANGELES ON JUNE 23, 1952 AND THE BOARD OF SUPERVISORS OF THE COUNTY OF LOS ANGELES ON JUNE 20, 1954, INCLUDING ADJACENT AREAS, UNDER AUTHORITY OF THE JOINT POWERS ACT, GENERAL LAWS OF CALIFORNIA, BY AGREEMENT NO. 14550 ON AUGUST 30, 1945 AND AMENDMENT THERETO ON MAY 24, 1960, BETWEEN SAID CITY AND COUNTY.

FILED

AT REQUEST OF

ASSESSOR

OCT 10 1978

27 MIN.

PAST 10 AM

IN BOOK 1

AT PAGE 77

OF ASSESSOR'S MAPS

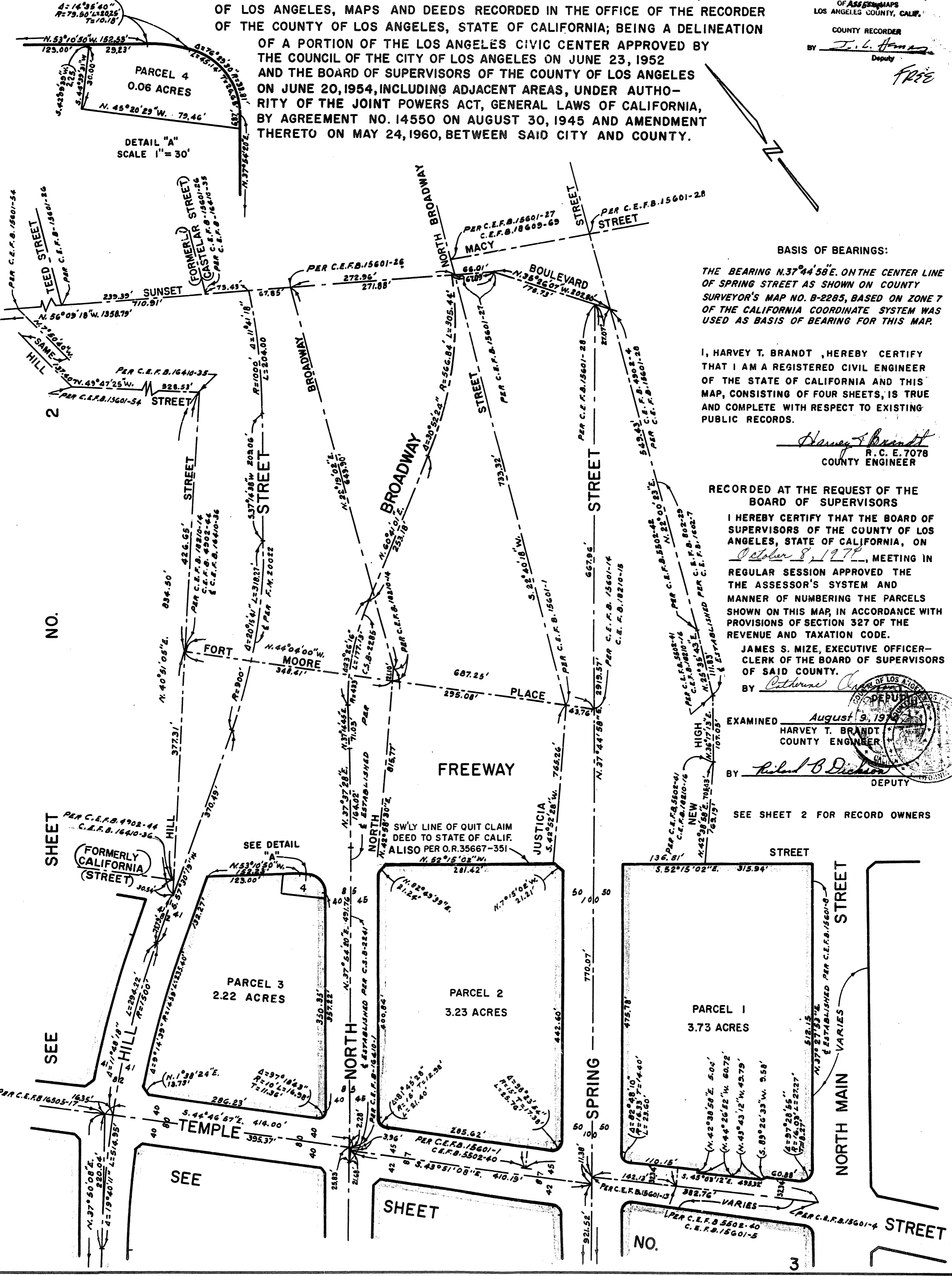
LOS ANGELES COUNTY, CALIF.

COUNTY RECORDER

BY J. L. H. Deputy

Free

SCALE: 1" = 100'



BASIS OF BEARINGS:
THE BEARING N.37°44'58"E. ON THE CENTER LINE OF SPRING STREET AS SHOWN ON COUNTY SURVEYOR'S MAP NO. B-2285, BASED ON ZONE 7 OF THE CALIFORNIA COORDINATE SYSTEM WAS USED AS BASIS OF BEARING FOR THIS MAP.

I, HARVEY T. BRANDT, HEREBY CERTIFY THAT I AM A REGISTERED CIVIL ENGINEER OF THE STATE OF CALIFORNIA AND THIS MAP, CONSISTING OF FOUR SHEETS, IS TRUE AND COMPLETE WITH RESPECT TO EXISTING PUBLIC RECORDS.

Harvey T. Brandt
R. C. E. 7078
COUNTY ENGINEER

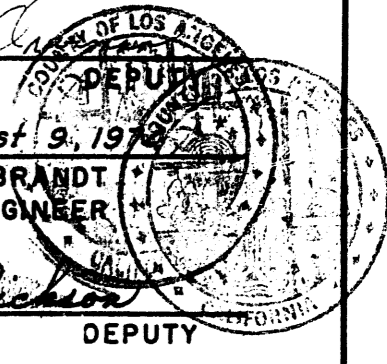
RECORDED AT THE REQUEST OF THE BOARD OF SUPERVISORS
I HEREBY CERTIFY THAT THE BOARD OF SUPERVISORS OF THE COUNTY OF LOS ANGELES, STATE OF CALIFORNIA, ON October 8, 1978, MEETING IN REGULAR SESSION APPROVED THE THE ASSESSOR'S SYSTEM AND MANNER OF NUMBERING THE PARCELS SHOWN ON THIS MAP, IN ACCORDANCE WITH PROVISIONS OF SECTION 327 OF THE REVENUE AND TAXATION CODE.
JAMES S. MIZE, EXECUTIVE OFFICER-CLERK OF THE BOARD OF SUPERVISORS OF SAID COUNTY.

BY *Catherine A. Dixon*
DEPUTY

EXAMINED August 9, 1978
HARVEY T. BRANDT
COUNTY ENGINEER

BY *Richard B. Dickson*
DEPUTY

SEE SHEET 2 FOR RECORD OWNERS



NO.

SHEET

SEE

SEE

SHEET

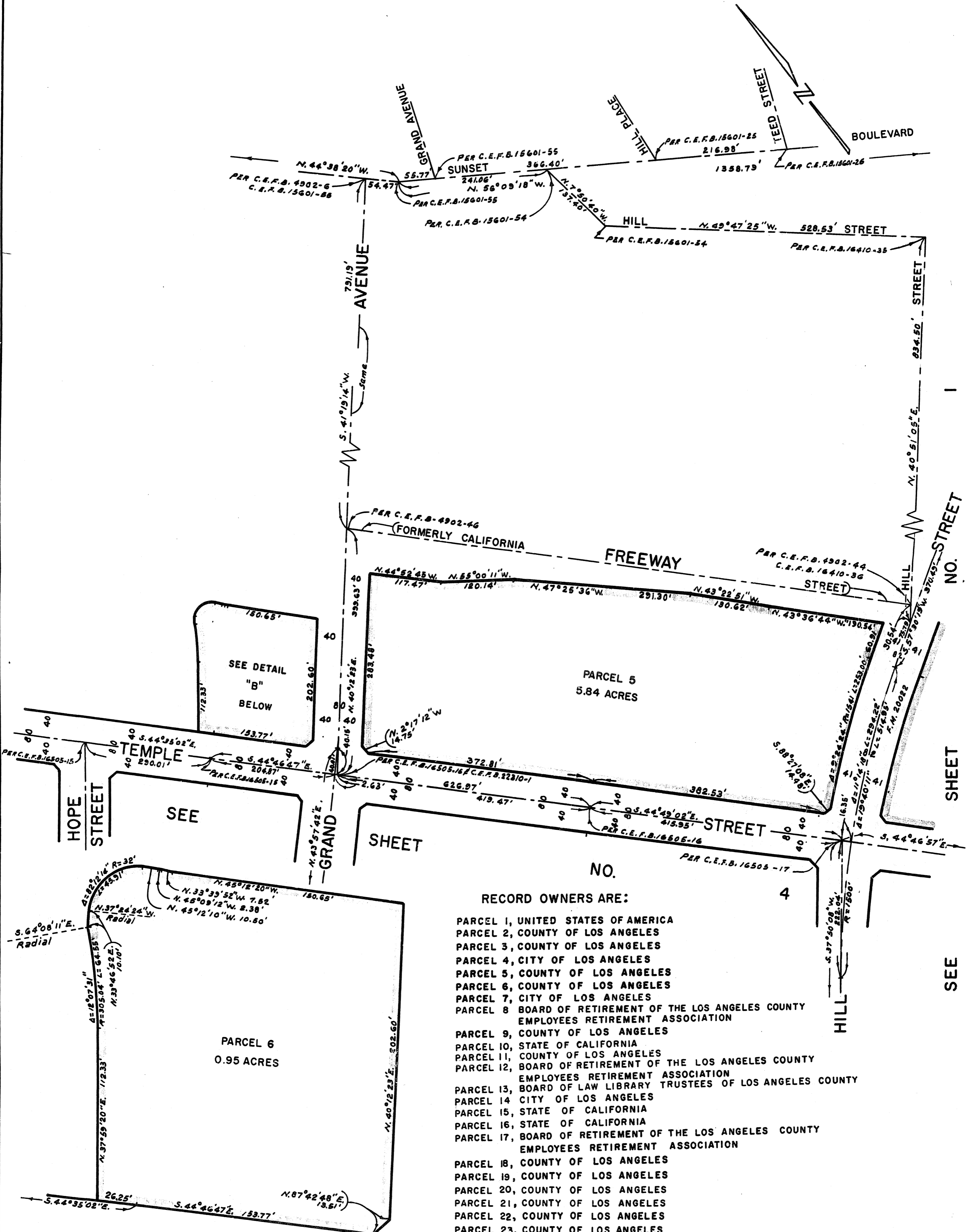
NO.

SCALE: 1"=100'

L.A.C.A. MAP NO. 94

FILED WITH LOS ANGELES COUNTY RECORDER
OCT 10 1974

IN THE CITY OF LOS ANGELES,
COUNTY OF LOS ANGELES, STATE OF CALIFORNIA



RECORD OWNERS ARE:

- PARCEL 1, UNITED STATES OF AMERICA
- PARCEL 2, COUNTY OF LOS ANGELES
- PARCEL 3, COUNTY OF LOS ANGELES
- PARCEL 4, CITY OF LOS ANGELES
- PARCEL 5, COUNTY OF LOS ANGELES
- PARCEL 6, COUNTY OF LOS ANGELES
- PARCEL 7, CITY OF LOS ANGELES
- PARCEL 8, BOARD OF RETIREMENT OF THE LOS ANGELES COUNTY EMPLOYEES RETIREMENT ASSOCIATION
- PARCEL 9, COUNTY OF LOS ANGELES
- PARCEL 10, STATE OF CALIFORNIA
- PARCEL 11, COUNTY OF LOS ANGELES
- PARCEL 12, BOARD OF RETIREMENT OF THE LOS ANGELES COUNTY EMPLOYEES RETIREMENT ASSOCIATION
- PARCEL 13, BOARD OF LAW LIBRARY TRUSTEES OF LOS ANGELES COUNTY
- PARCEL 14, CITY OF LOS ANGELES
- PARCEL 15, STATE OF CALIFORNIA
- PARCEL 16, STATE OF CALIFORNIA
- PARCEL 17, BOARD OF RETIREMENT OF THE LOS ANGELES COUNTY EMPLOYEES RETIREMENT ASSOCIATION
- PARCEL 18, COUNTY OF LOS ANGELES
- PARCEL 19, COUNTY OF LOS ANGELES
- PARCEL 20, COUNTY OF LOS ANGELES
- PARCEL 21, COUNTY OF LOS ANGELES
- PARCEL 22, COUNTY OF LOS ANGELES
- PARCEL 23, COUNTY OF LOS ANGELES
- PARCEL 24, COUNTY OF LOS ANGELES

DETAIL "B"
SCALE: 1"=40'

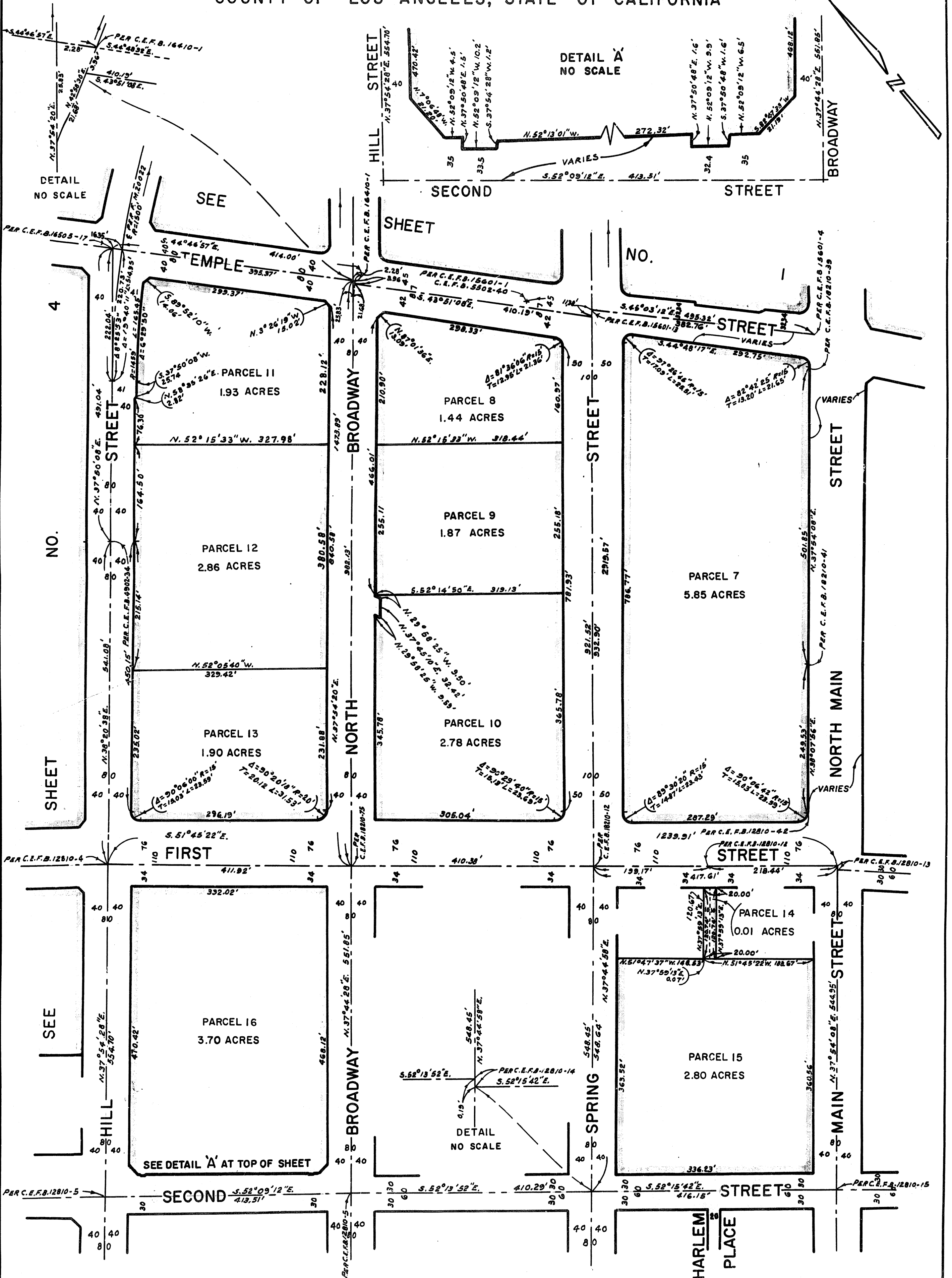
SCALE: 1"=100'

SHEET 3 OF 4 SHEETS

FILED WITH LOS ANGELES COUNTY RECORDER OCT 10 1974

L.A.C.A. MAP NO. 94

IN THE CITY OF LOS ANGELES, COUNTY OF LOS ANGELES, STATE OF CALIFORNIA



SCALE: 1" = 100'

L.A.C.A. MAP NO. 94

FILED WITH LOS ANGELES COUNTY RECORDER
OCT 10 1974

IN THE CITY OF LOS ANGELES,
COUNTY OF LOS ANGELES, STATE OF CALIFORNIA

