

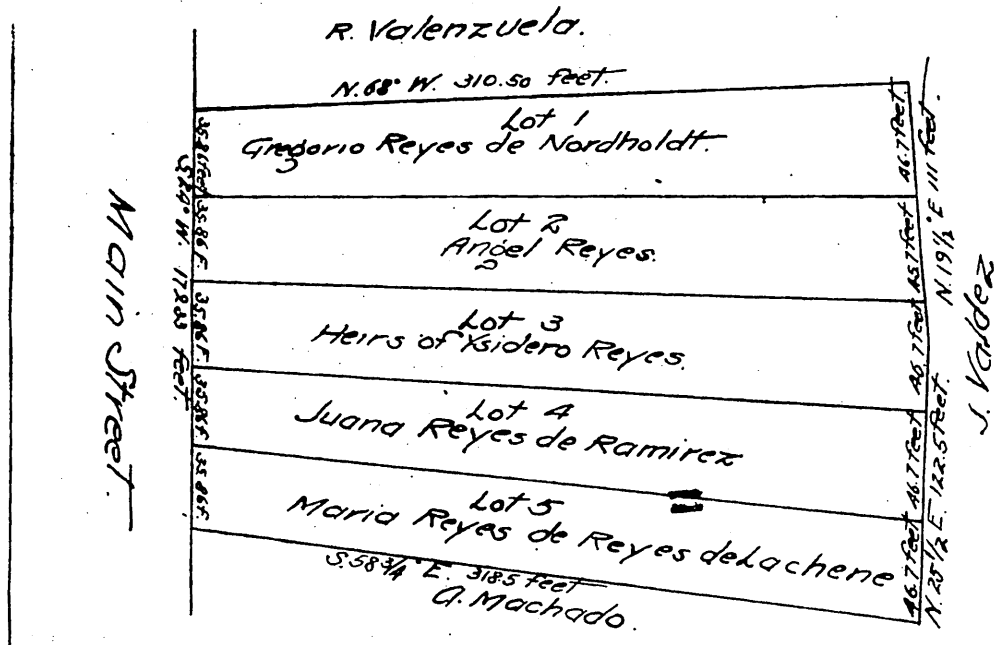
No. 1  
MAP

of a Building Lot in Los Angeles City California, as surveyed on the 25<sup>th</sup> of March 1857 by Deputy County Surveyor Adolphus F. Waldemar, and described in a deed to

**Maria Antonia Machado**

executed by John G. Nichols Mayor of the City of Los Angeles April 4<sup>th</sup> 1857  
Showing

the Division Lines of the partition made by Christobal Aguilar J. J. Warner and Geo. Hansen Commissioners of Partition appointed by a decree of the Probate Court of Los Angeles County of date October 24<sup>th</sup> 1865.



Scale of 80 feet to the inch. The courses are magnetic.

In the Probate Court Los Angeles County State of California.

In the matter of the Estate  
OF  
Maria Antonia Machado dec'd

We the undersigned Commissioners appointed to make partition in the above case, hereby certify this to be the Map No. 1 referred to in our report of partition of this date.

Los Angeles November 18, 1865

Christobal Aguilar,  
J. J. Warner,  
Geo. Hansen.

A full true and correct copy of the original recorded this 1<sup>st</sup> day of December A.D. 1865 at 10 hrs. 5 Min. A.M. at request of A.B. Chapman.

T. D. Mott Co Recorder  
By Joseph Huber Jr. Deputy.