

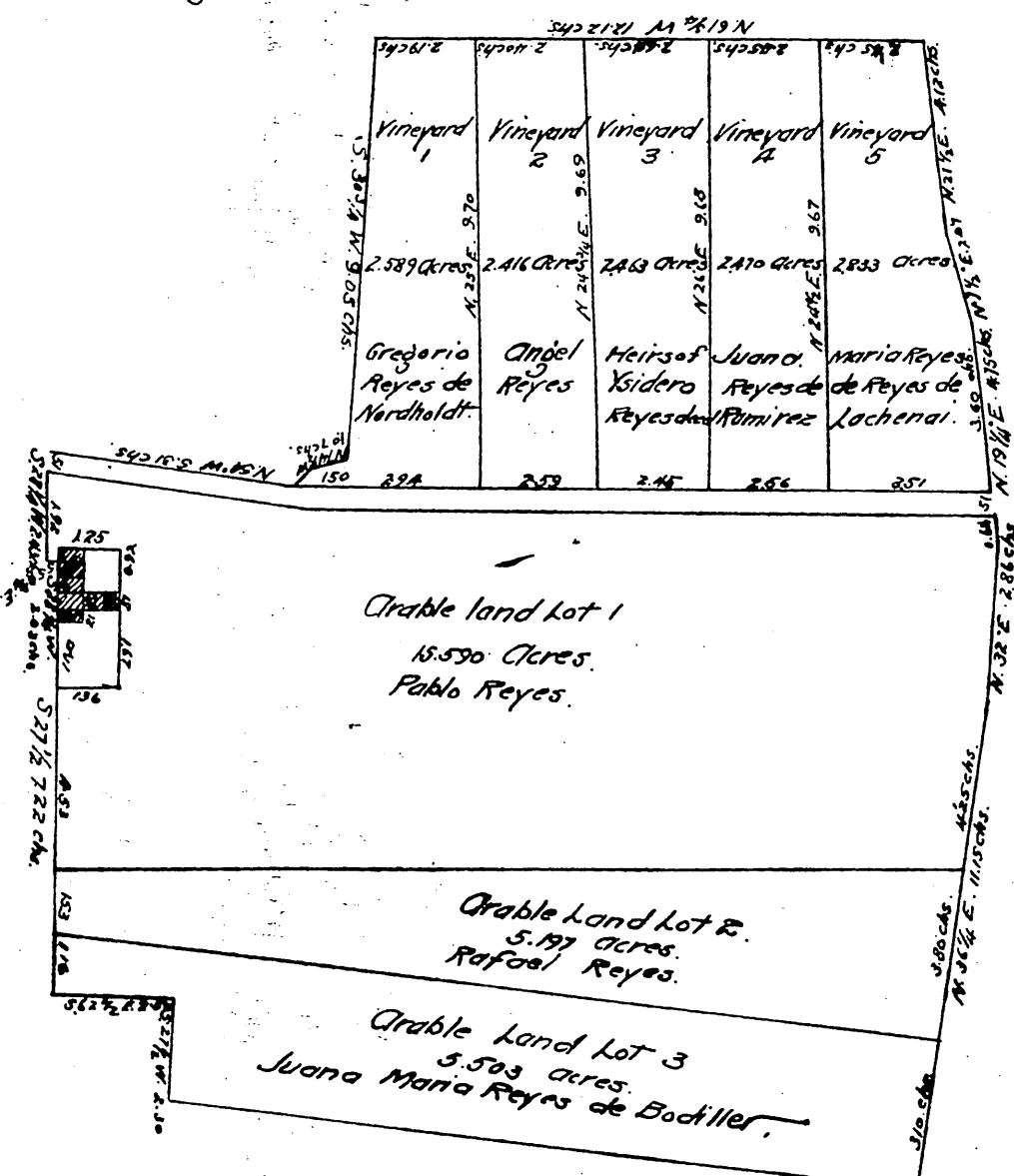
# No. 2 MAP

of a tract of land situate in the Southern part of Los Angeles City California as surveyed on the 20<sup>th</sup> of January 1857 by Deputy County Surveyor Adolphus F. Waldemar and described in a deed to Maria Antonia Machado

executed by John Nichols Mayor of the City of Los Angeles February 7 1857 and recorded p. 288 lib. A of deeds County Record showing the Division Lines of the partition made by Christobal Aguilar, J. J. Warner and Geo. Hansen. Commissioners of partition appointed by a decree of the Probate Court of Los Angeles County of date of October 24, 1865

Scale of 4 chains to the inch.  
The courses are magnetic.

Courses	Distance chains	Area Acres	Courses	Distance chains	Area Acres	Courses	Distance chains	Area Acres
Vineyard No 1 Gregoria Reyes de Nordholdt			Palm Street running From Main Street			Orable Land Lot 3 Juana Maria Reyes de Bodiller		
S 61 1/4 E	4.44		S 45 E	5.31		S 21 1/2 W	116	
N 26 E	9.70		S 63 E	15.65		S 62 1/2 E	2.50	
N 61 1/4 W	2.19		50 links wide	1.043		S 27 1/2 W	2.30	
S 30 1/2 W	9.05		Lot of the Dwelling house			S 55 1/2 E	16.45	
N 74 1/2 W	1.07		2925 x 1305			N 36 1/2 E	3.10	
S 7 1/2 W	0.60	2.589	Divided in 3 parts.			N 55 1/2 W	12.46	5.503
Vineyard 2 Angel Reyes			Q. Juan Reyes de Ramirez			Total of Orable Land		
S 6 1/2 E	2.59		crossed x 27 links			26.294		
N 24 1/2 E	9.69		with a right of way 0.0108					
N 8 1/2 W	2.40		b. Rafael Reyes					
S 26 W	9.70	2.416	133168 021812			Total		
Vineyard 3 Heirs of Xidero Reyes			Orable Land Lot 1 Pablo Reyes			40.49		
S 43 1/2 E	2.45		S 28 1/2 W			1.92		
N 26 E	9.68		S 58 1/2 E			0.28		
N 61 1/4 W	2.64		S 28 1/2 W			2.03		
N 24 1/2 W	9.69	2.462	S 27 1/2 W			4.53		
Vineyard 4 Juana Reyes de Ramirez			S 82 1/2 E			12.88		
N 4 1/2 E	2.66		N 36 1/2 E			0.25		
N 24 1/2 E	9.67		N 32 E			2.86		
N 61 1/4 W	2.45		N 19 1/2 E			0.44		
S 26 W	9.68	2.470	N 61 1/4 W			15.65		
Vineyard 5 Maria Reyes de Reyes de Lachenai			but not including The Dwelling 75.590			N 54 W		
						5.31		
			Orable Land Lot 2 Rafael Reyes					
			S 27 1/2 W			1.53		
			S 55 1/2 E			19.46		
			N 36 1/2 E			3.80		
			N 62 1/4 W			12.38		5.197
Total 1 Vineyard						12.769		



In the probate Court of Los Angeles County State of California.  
In the Matter of the Estate  
of Maria Antonia Machado.  
de Reyes deceased

We the undersigned Commissioners appointed to make Partition  
in the above case hereby certify this to be the map No. 2 referred to in our report of par-  
tition of this date. Los Angeles November 18 1865

Christobal Aguilar.  
J. J. Warner  
Geo. Hansen

A full true and correct copy of the original recorded this 1<sup>st</sup> day of December A. D. 1865 at 10 hrs.  
7 min. A. M. at request of A. B. Chapman.

T. D. Mott Co. Recorder  
By Joseph Huber Jr. Deputy