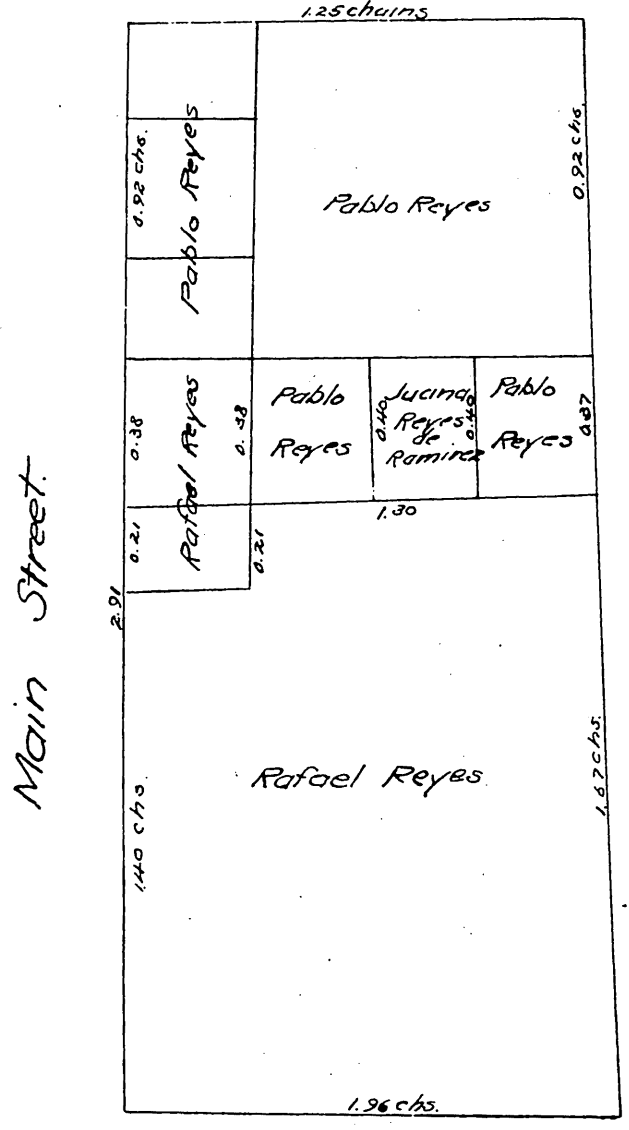


Nr. 3 MAP

Showing the Division of the house and lot on the 40⁴² acre tract of land situate in the Southern part of the City of Los Angeles conveyed by John Nichols Mayor of the City aforesaid to Maria Antonia Machado on the 7th of February 1857 and divided by Christobal Aguilar, J. J. Warner, and George Hansen, Commissioners of Partition appointed by a decree of the Probate Court of Los Angeles County of October the 24th 1865.

Scale of one chain to two inches.



In the Probate Court of Los Angeles County State of California.
In the Matter of the Estate
of Maria Antonia Machado }
de Reyes deceased.

We the undersigned commissioners appointed to make partition in the above case hereby certify this to be the map Nr. 3 referred to in our report of partition of this date.
Los Angeles November 18, 1865

Christobal Aguilar.
J. J. Warner.
Geo. Hansen.

A full true and correct copy of the original recorded this 1st day of December A. D. 1865, at 10 hrs. 10 min. A. M. at request of A. B. Chapman.

T. D. Mott Co. Recorder.
By Joseph Huber Jr. Deputy.