



MR 1-400 reindexed as MR 32-85

Scale of 80 feet to the inch
The courses are magnetic

I hereby certify this to be a correct map of a survey
executed by me on the 16th day of January A.D. 1857

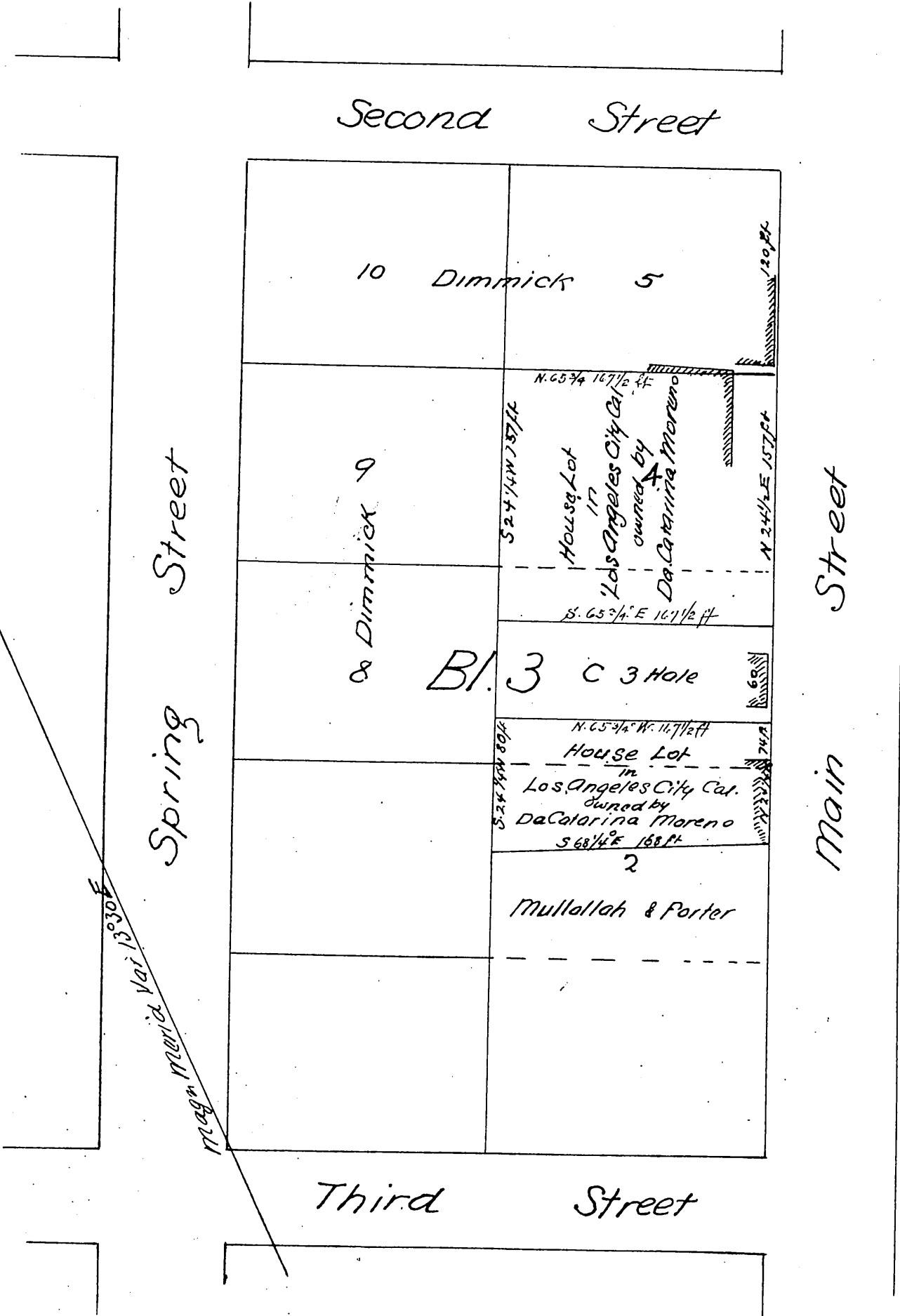
Los Angeles City February 18th 1857

Adolphus F Waldemar

Dep. Co. Surv. Los Angeles Co. Cal.

Seal

Map
of
Moreno
Property



A full, true and correct copy of the original
recorded this the 10th day of February A.D. 1868
at 12 hrs M at request of Andres Pico
T D Matt Recorder
By J. W. Gillette Deputy