

PLAN

OF

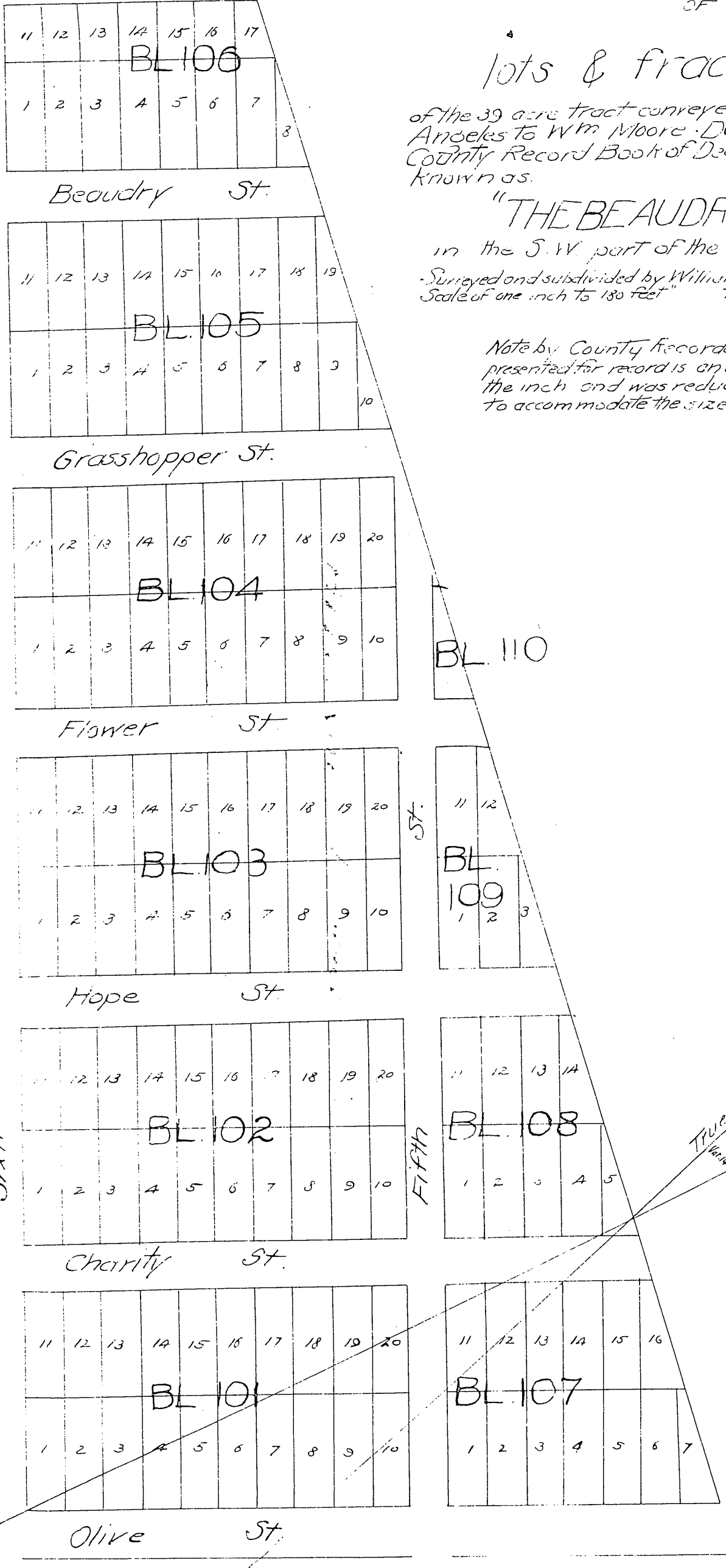
lots & fractional lots

of the 39 acre tract conveyed by the City of Los Angeles to Wm Moore December 20 1858 (see County Record Book of Deeds 4. page 343) and known as.

"THE BEAUDRY TRACT"

in the S.W. part of the city of Los Angeles
 Surveyed and subdivided by William Moore August 25th 1868
 Scale of one inch to 180 feet The courses are magnetic.

Note by County Recorder The original map presented for record is on a scale of 120 feet to the inch and was reduced as here appears to accommodate the size of this Book



Vide Book of Miscellaneous Records p. 135 for 1858 and map of it being "Bellane Terrace Tract" and "Beaudry Tract" J.W. Gillette Co. Recorder Sept. 10 1874.

SIXTH

FIFTH

True meridian
 Mag. Meridian

A full true and correct copy of the original recorded
 December 26th 1868 at request of Pruden Beaudry
 T.D. Mott Recorder
 By S.H. Mott Deputy.