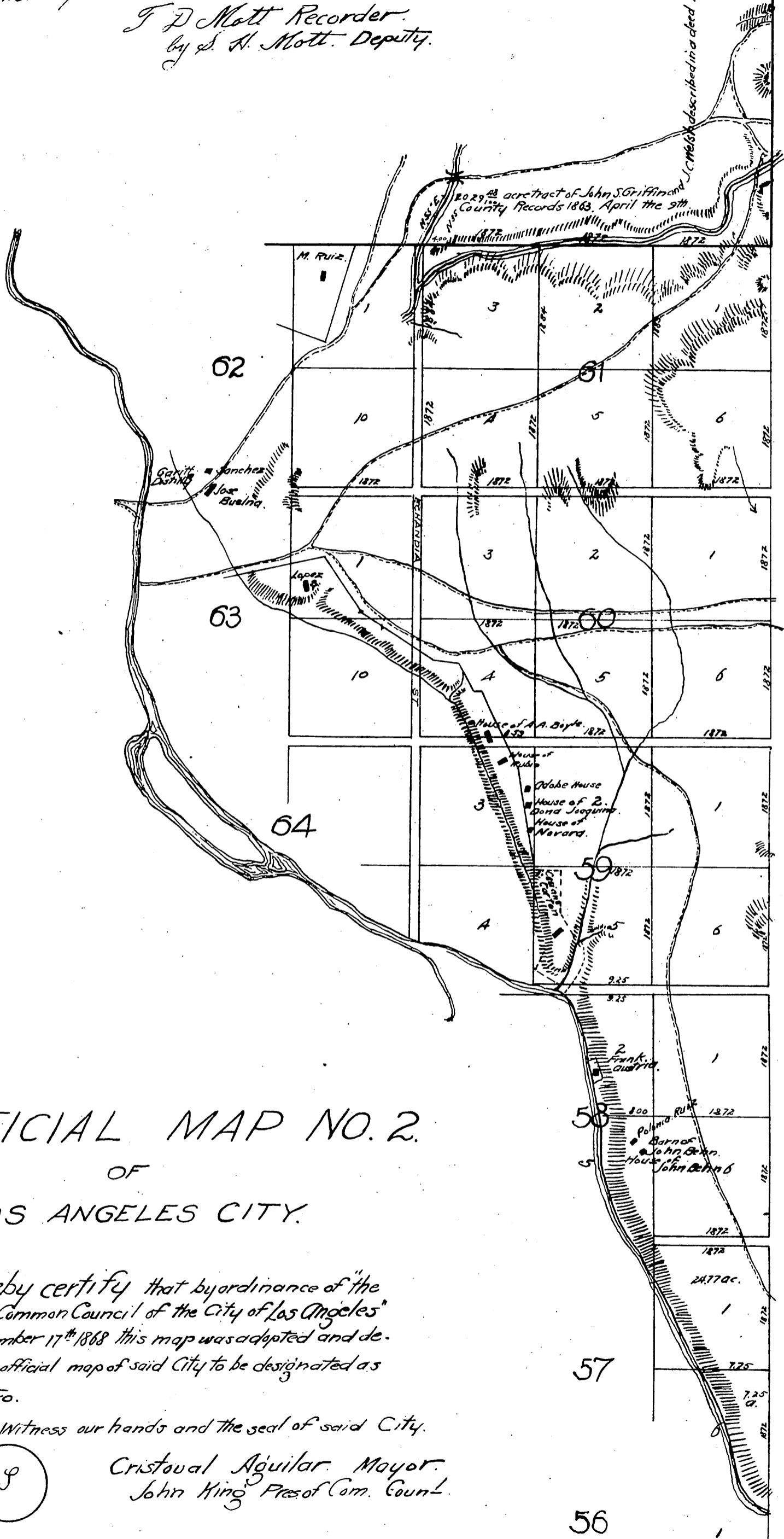


A true and correct copy of the original filed for record on November 23^d 1868 at request of A. J. King Esq. City Attorney.

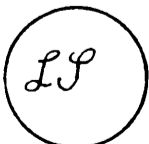
J. D. Mott Recorder.
by S. H. Mott, Deputy.



OFFICIAL MAP NO. 2.
OF
LOS ANGELES CITY.

We hereby certify that by ordinance of "the Mayor and Common Council of the City of Los Angeles" approved November 17th 1868 this map was adopted and declared to be an official map of said City to be designated as Number Two.

Witness our hands and the seal of said City.



Cristoval Aguilar Mayor.
John King Pres of Com. Counl.

3210

MAP

of the

35 ACRE LOTS

of the Los Angeles City Lands "Harrock Survey"
East of Los Angeles River

surveyed by

G. Hansen.

Co. Surveyor.

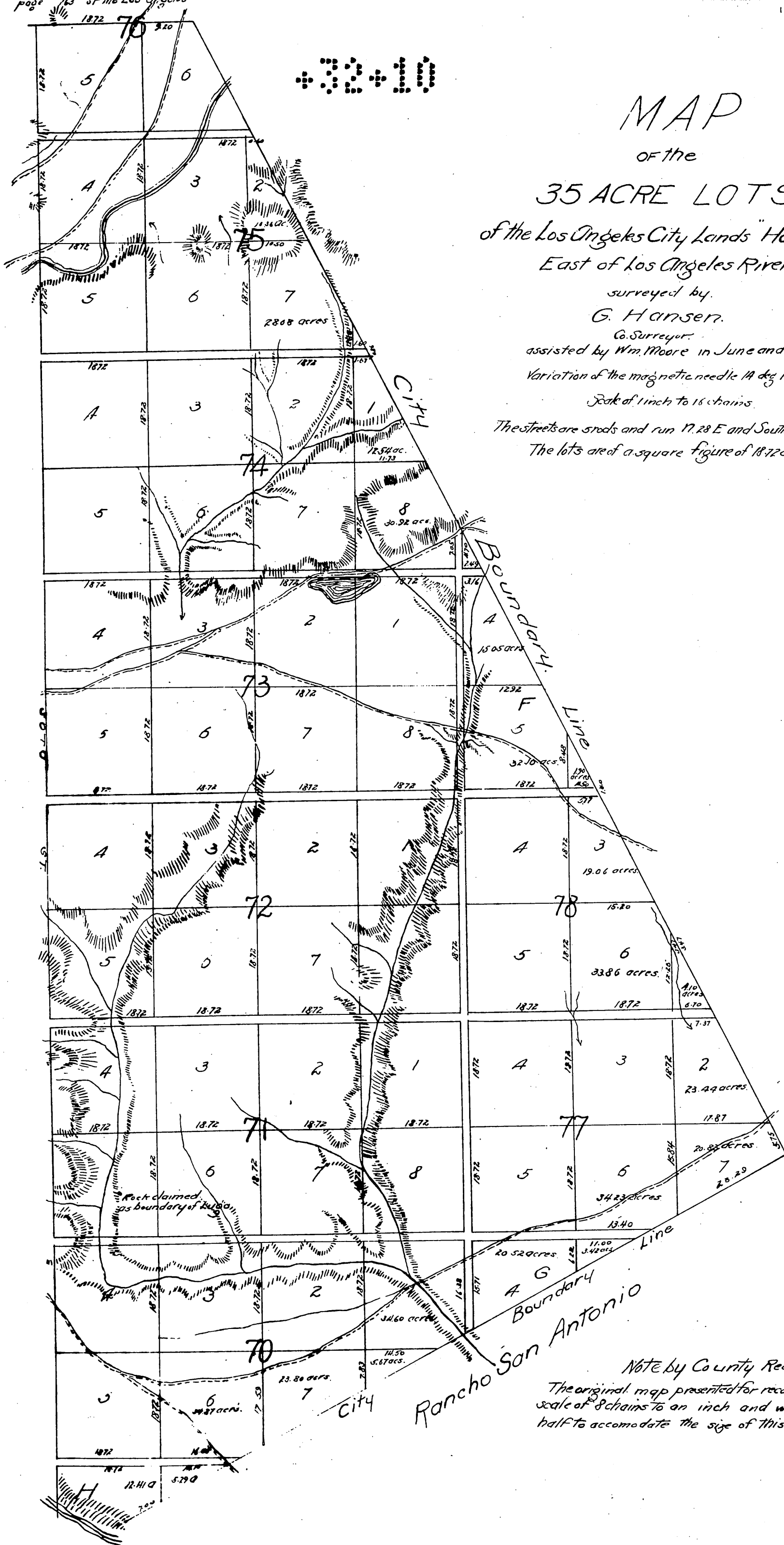
assisted by Wm. Moore in June and July 1868

Variation of the magnetic needle 19 deg 15 min East.

Scale of 1 inch to 16 chains.

The streets are roads and run N. 28 E and South 62° East.

The lots are of a square figure of 18.72 chs each side.



Note by County Recorder

The original map presented for record was on a scale of 8 chains to an inch and was reduced one half to accommodate the size of this Book.