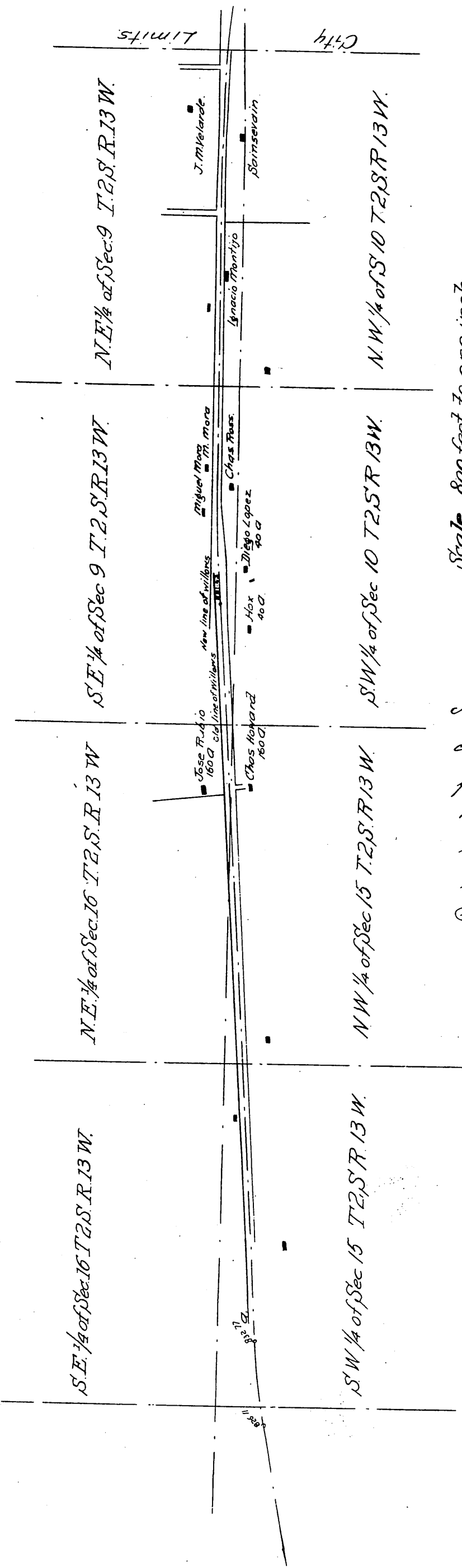




EXHIBIT A



Scale 800 feet to one inch.
 Note by Recorder. The original map filed for record is on a scale of 200 feet to one inch, and was reduced as above to accommodate the size of this Book.

A true, full and correct (reduced) copy of the original Map, and filed for record on August 18th 1869 at 3 o'clock P.M. at request of J. M. L. Chipley Esq^r Secretary of the Los Angeles and San Pedro Railroad Company.
 J. D. Mott, Recorder.
 by J. H. Mott Deputy.