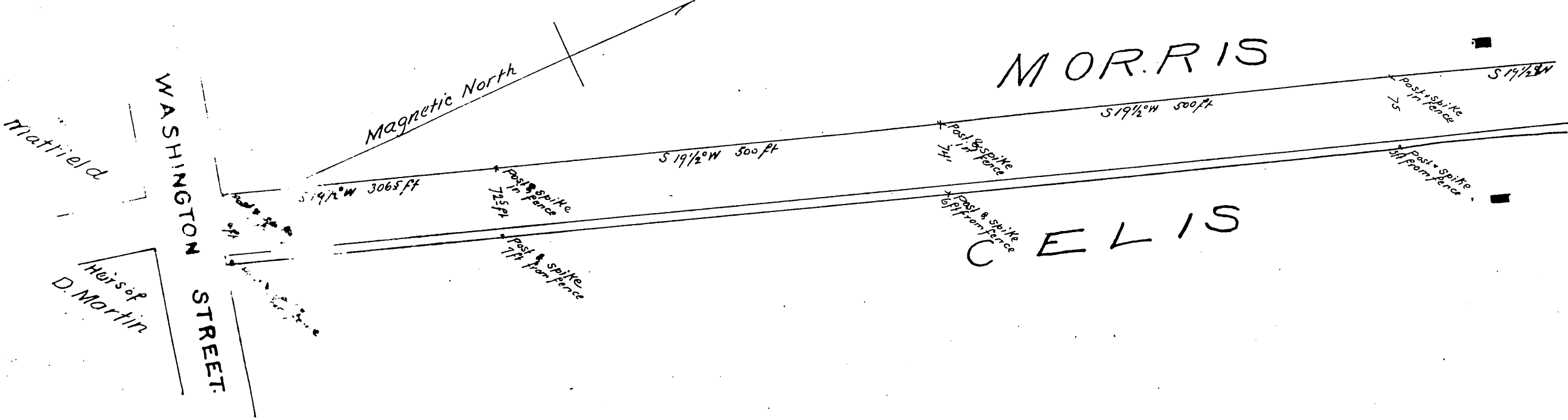
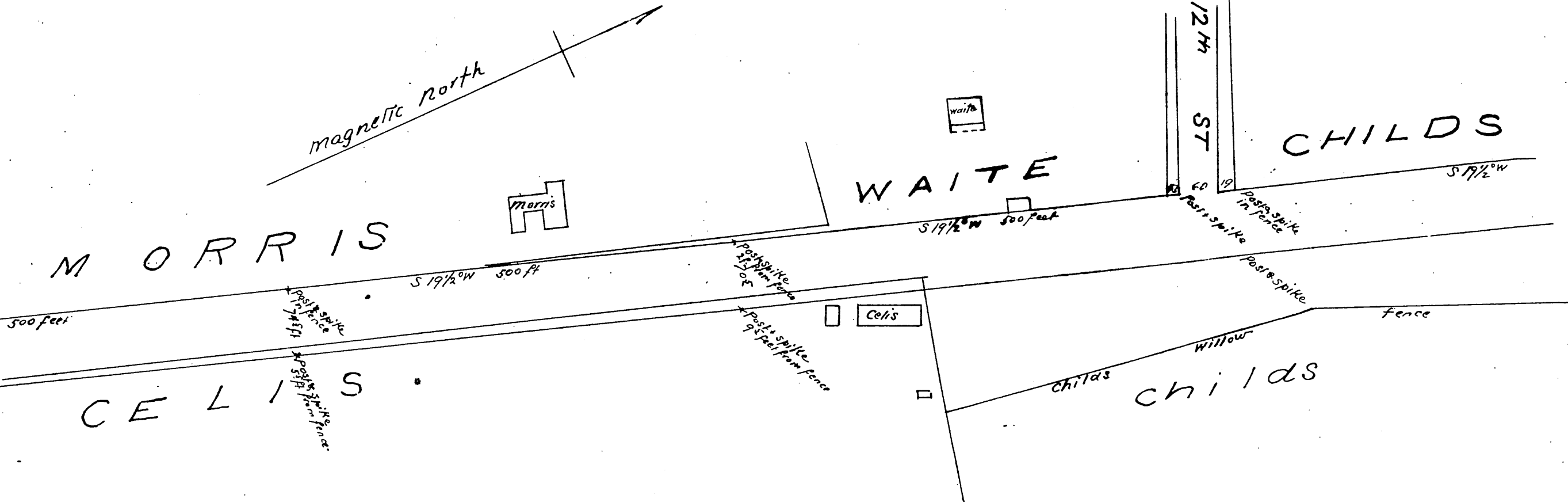


SEC. 1.

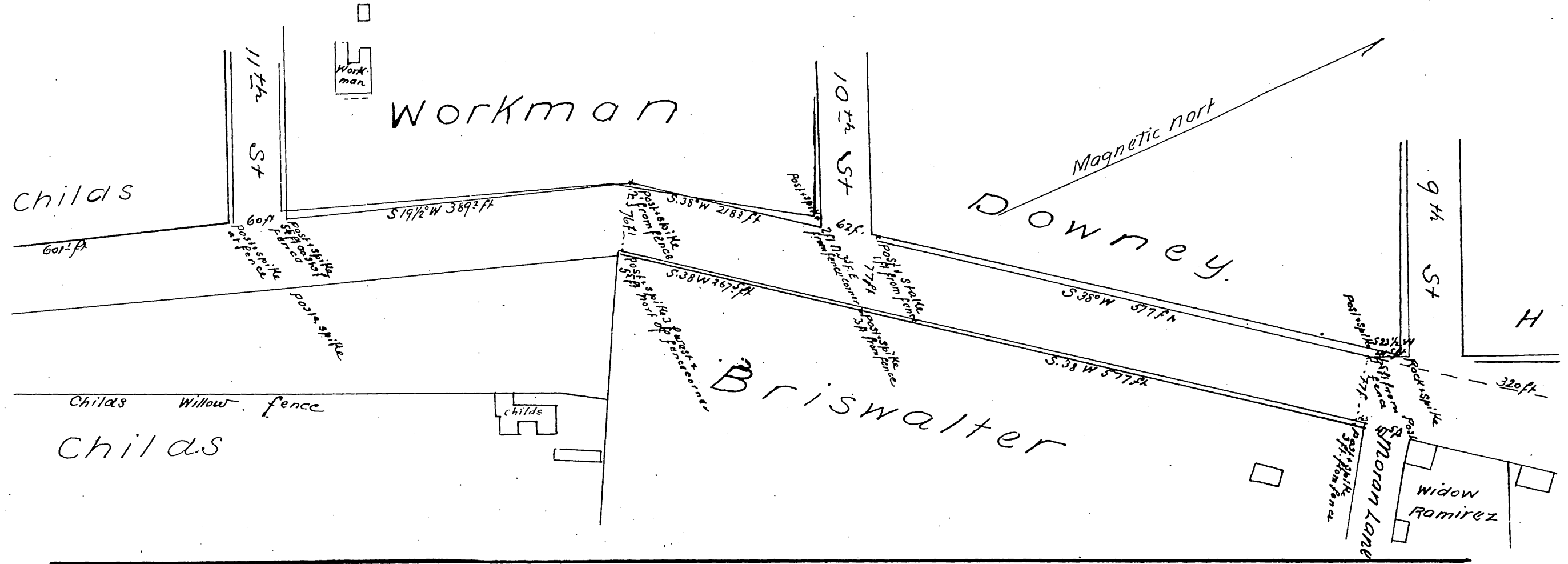


SEC 2.

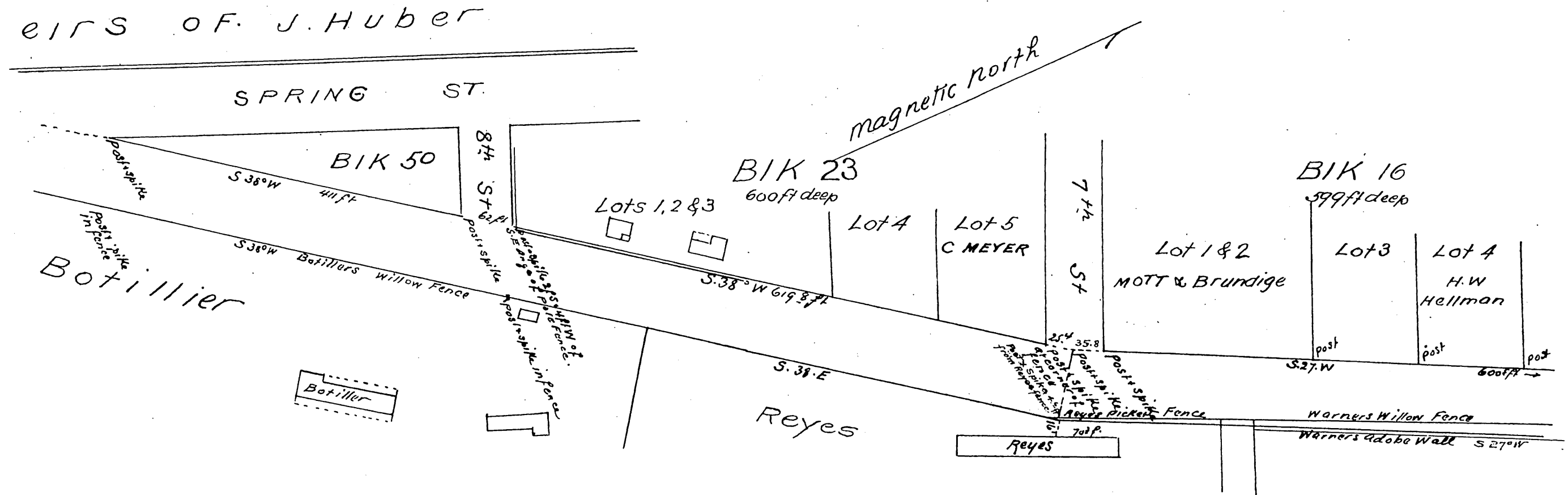


329

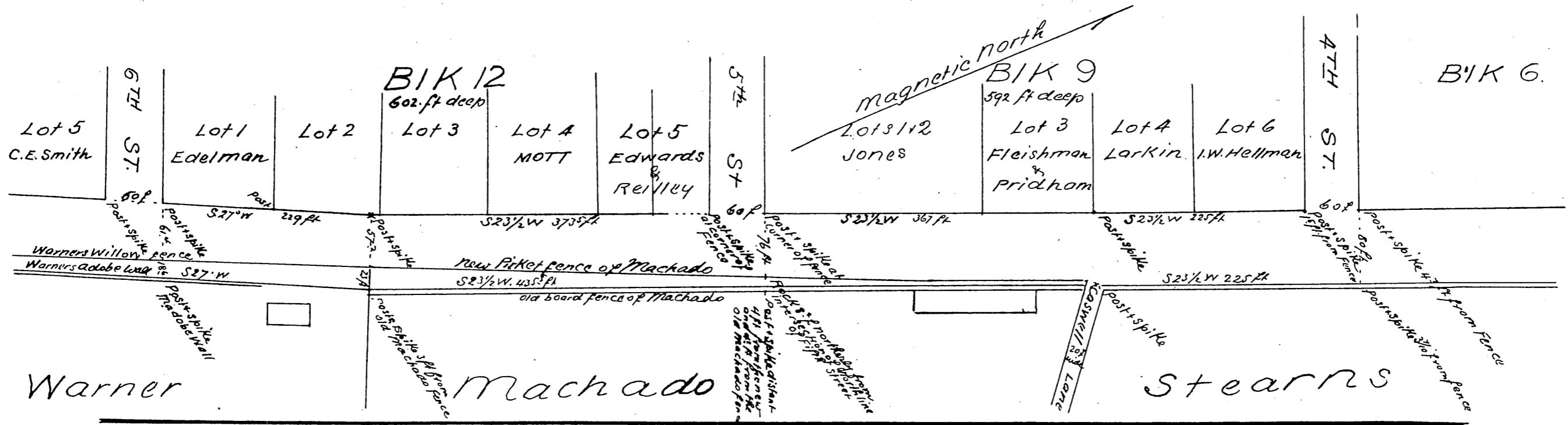
Sec 3



Sec 4



SEC 5



Plan of Main Street
Between Fourth and Washington Streets
Los Angeles City Cal^a

surveyed May 10th 1869 by Order of the Honorable Common Council
by
Frank Lecourneur
Surveyor

Scale of one hundred & twenty (120) feet to one inch
magnetic courses.

Note by County Recorder The original map is on a scale of sixty feet to the inch
and is here reduced as above to accommodate the size of this Book

A full, true and correct copy of the original
recorded this 23rd day of September, 1869
at request of Hon. Joel H. Turner Mayor
T. D. MOTT Recorder
By S. H. MOTT Deputy