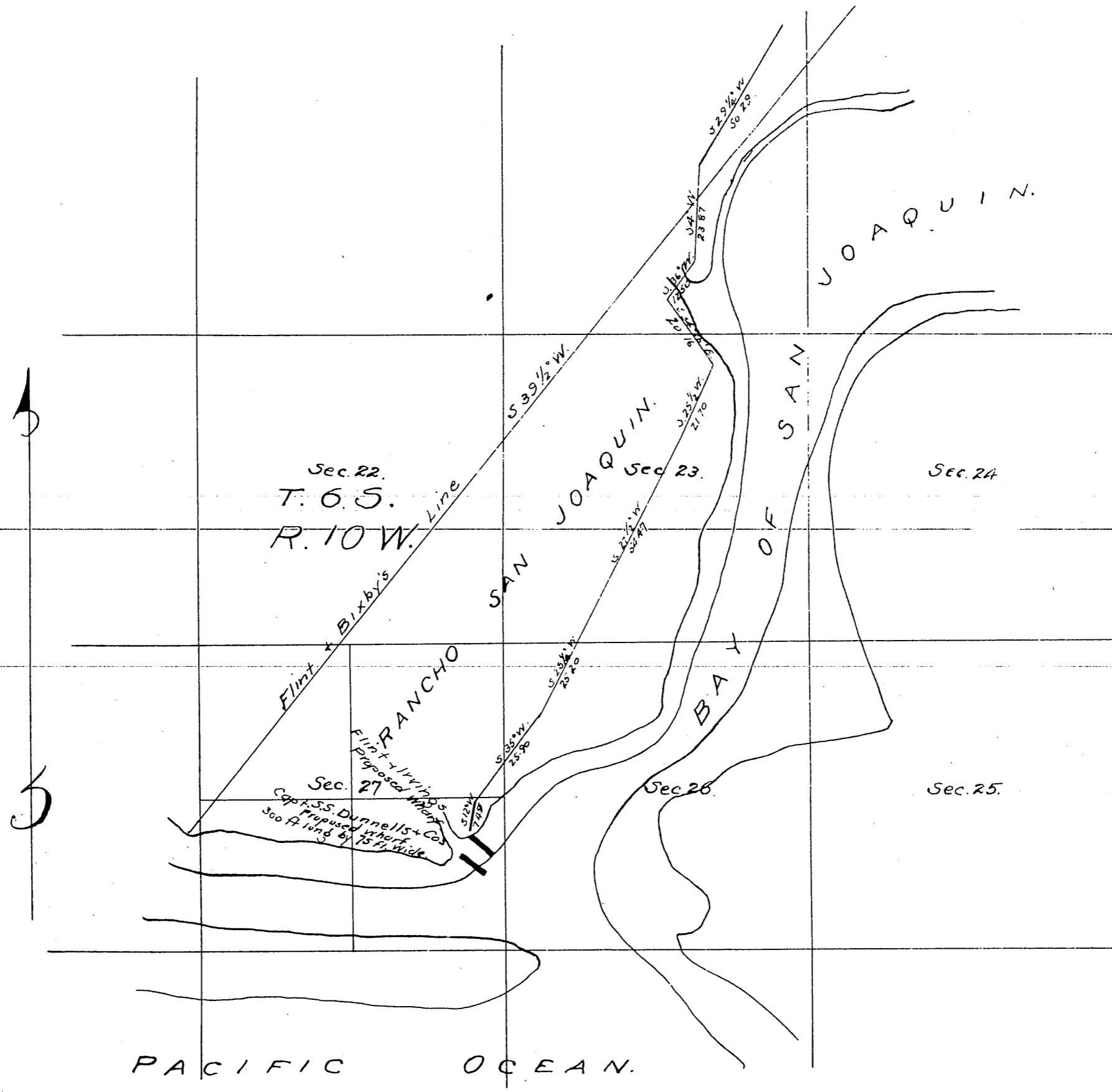


A full true and correct copy of the original,
 recorded March 21, 1871, at 10 o'clock A.M.,
 at request of C. O. Gardner.

T. D. Mott County Recorder.
 By S. H. Mott Deputy.



Plan
 Showing Location
 of
 Capt S.S. Durnell's and Co's
 PROPOSED WHARF.

Scale: ~ 30 chains to 1 inch
 Var. ~ 14° East.

Tide Lands. owned by Glassell & Chapman
 colored yellow.
 Up. Lands. owned by Benj. Flint and
 Jas. Irvine in water color.

