

Plan  
of the  
Johnston Tract.  
at the corner of First and Alameda St<sup>s</sup>  
Los Angeles City.

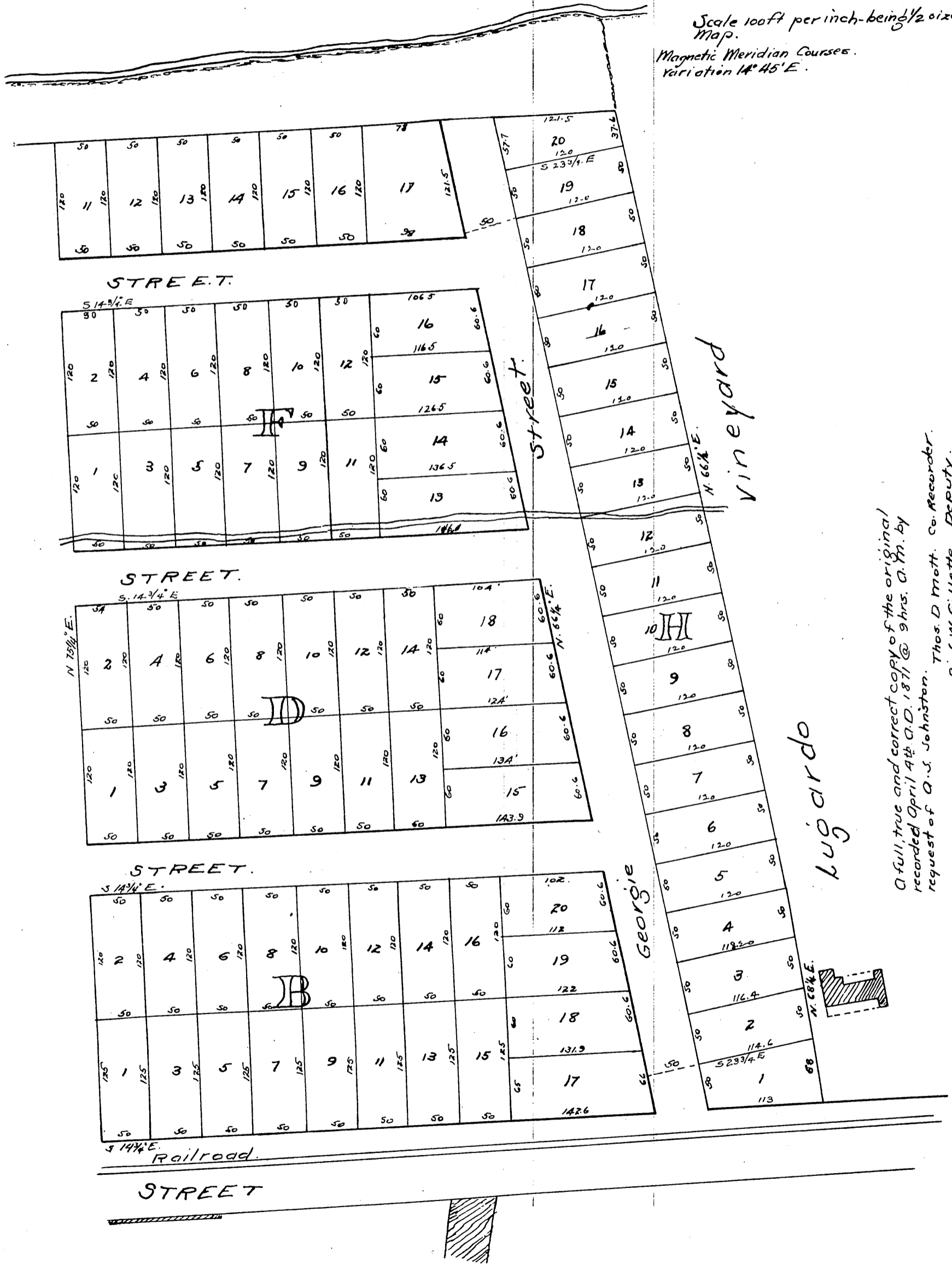
Surveyed in March 1871 at request & under instructions of  
Messrs T. D. Mott, M. Brundige & A. S. Johnston.

by

(sgd) Frank Lecowreux  
County Surveyor of Los Angeles County.

Scale 100ft per inch - being 1/2 size of original Map.

Magnetic Meridian Courses.  
Variation 14° 45' E.



A full, true and correct copy of the original  
recorded April 4<sup>th</sup> A.D. 1871 @ 9 hrs. A.M. by  
request of A. S. Johnston. Thos. D. Mott, Co. Recorder.  
By S. W. Gillette, Deputy.