

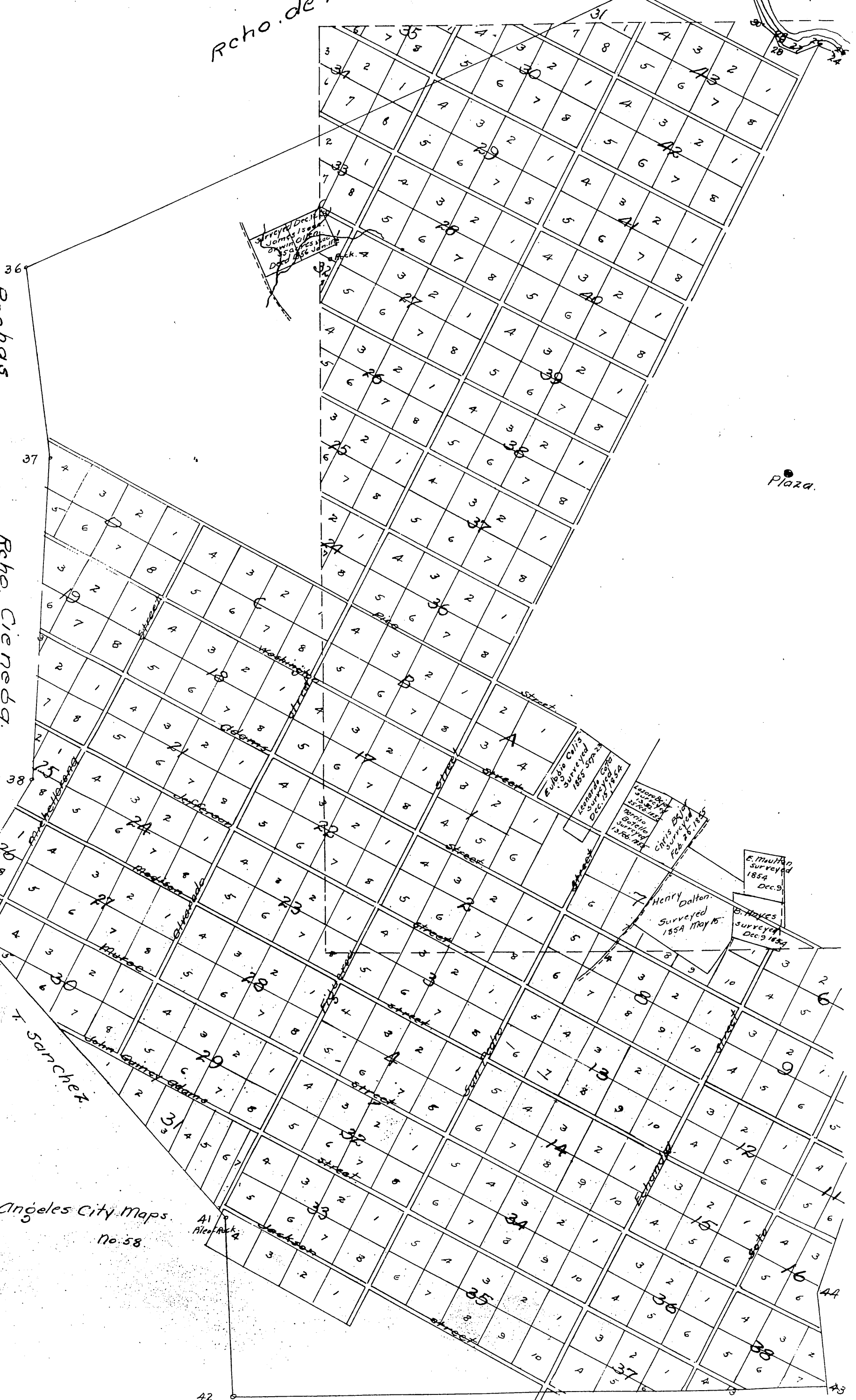
Rcho. de los Felis

L. Grand Ser.

Rochas

Rcho. Ciemeña

Plaza



Los Angeles City Maps No. 58

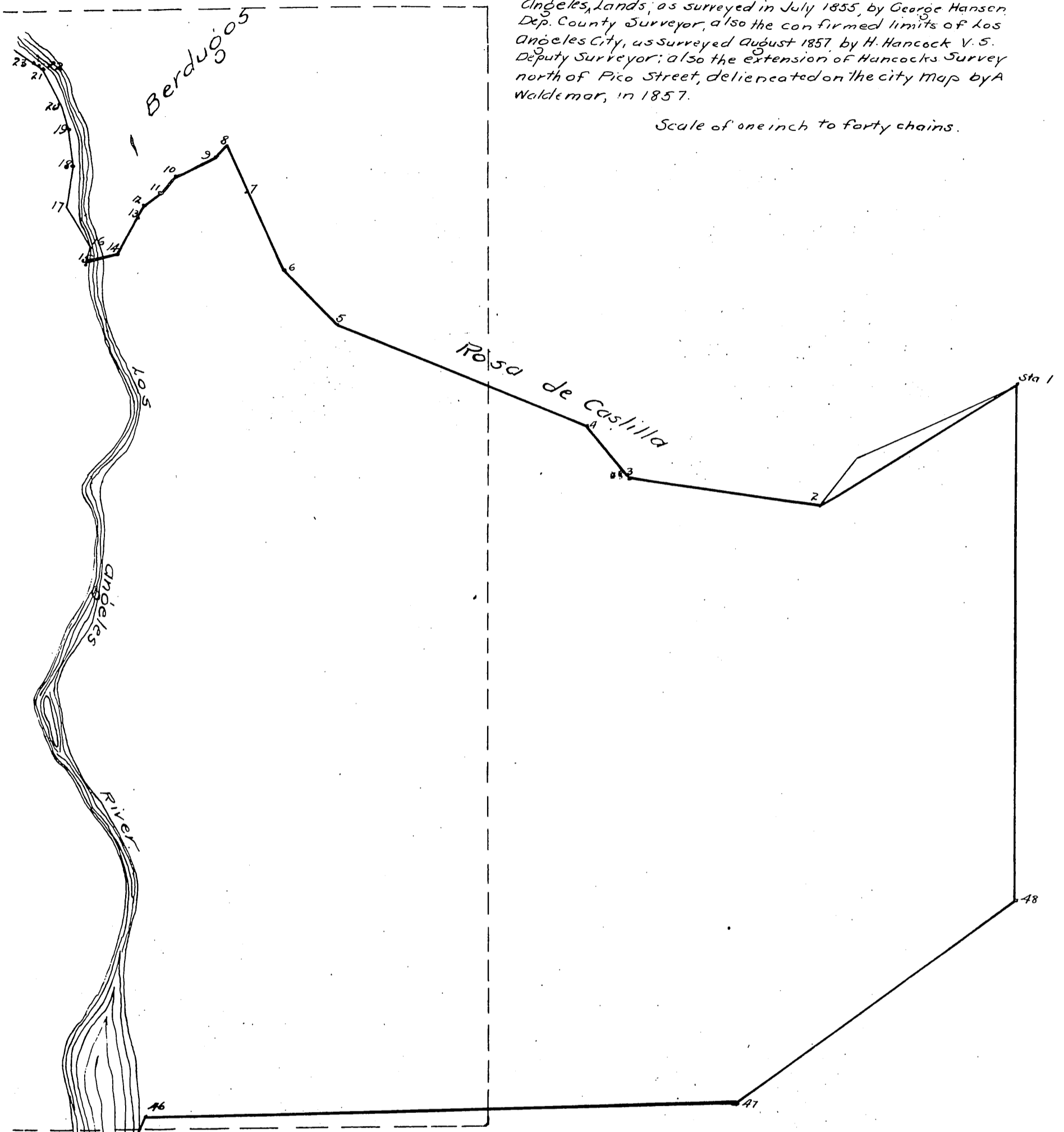
A1 Block 4

Rancho de los Cuervos

Map

Showing the Donation Lots containing 35 acres each, Surveyed By H. Hancock assisted by George Hansen, and Known as ^{Pueblo} Hancocks Survey also the boundaries of the Los Angeles, Lands, as surveyed in July 1855, by George Hansen, Dep. County Surveyor, also the confirmed limits of Los Angeles City, as surveyed August 1857, by H. Hancock V. S. Deputy Surveyor; also the extension of Hancocks Survey north of Pico Street, delineated on the city Map by A Waldemar, in 1857.

Scale of one inch to forty chains.

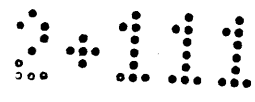


Recho. San Antonio.

- Boundary line of the Los Angeles Pueblo Lands, surveyed by George Hansen in July, 1855
- - - Confirmed Limits of Los Angeles City, surveyed by H. Hancock August, 1857.

For interior lettering and marginal notes see next two pages.

Note by Recorder - The original of this map is on a scale of one inch to 20 chains, but is here reduced one half, to accommodate the size of this Book.



For copy of this map
See M.R. 32-34

Block	Lot	Name	Date	Year	Block	Lot	Name	Date	Year
30	8	M. Keller	April	1855	33	5	Ju. Terasqua	April	23 54
31	1	F. Solano	May	1855		6	J. Tarasco	April	23 54
	2	F. Solano	May	1855		7	J. Fernandez	April	24 54
	3	F. Solano	May	1855		8	J. Fernandez	May	1 1854
	4	F. Solano	May	1855	34	5	A. Clark	Oct	24 1854
	5	F. Solano	May	1855		6	James Woods	Nov.	24 1854
	6	F. Solano	May	1855		7	J. Woods	Nov.	24 1854
	7	F. Solano	May	1855		8	J. Woods	Nov.	24 1854
32	1	Geo. Hausen	Aug	11 1855	35	4	J. Brander	April	13 1855
	2	Dion Soberano	May	1 1854		5	J. Brander	April	13 1855
	3	Pedro Ysaraquo	April	26 1854		6	J. Brander	April	13 1855
	6	M. Gier	May	7 1855		7	J. Brander	April	13 1855
	7	A. Fernandez	April	23 1855		8	J. Flores	April	24 1855
33	1	M. F. Meuder	May	1 54	S.W. of	2	Santiago Cruz	May	1 1854
	2	Jes. Masquiera	April	23 1854	33	3	J. Figaroa	May	1 1854
	3	Pedro Haraqa	Apr.	24 1854		4	J. Gordon	May	1 1854
	4	A. Valcsteros	Apr.	23 1864			A. Figoroa	May	1 1854

In the County Clerks Office of Los Angeles County, among a bundle of papers in an iron safe is a Contract (index No. 37) with E.O.C Ord for a Survey and Map of Los Angeles City of date July 22nd 1849.
The first Official Map of the City of Los Angeles was entitled "Plan de la Ciudad de Los Angeles, Surveyed by E.O.C Ord Lt U.S.A. and W.R. Hutton. Assistant. August 29th 1849. Scale of 8 inches per mile."
In the Index of the Maps Plan and Profiles in the Mayor's Office of Los Angeles City this Map is marked No. 1. It disappeared from the Mayor's Office in 1870 when Joel Turner was Mayor.

In the year 1853 the 35-acre Lots known as Donation Lots Hancock's Survey, South of Pico Street, were surveyed, by Henry Hancock, and George Hansen, Assistant

In July 1855 Deputy County Surveyor George Hansen surveyed the then boundaries of the Pueblo Lands of Los Angeles bounded by the Ranchos San Antonio, Los Cuervos, Paso de la Tijera de T. Sanchez, La Cienega, de los Ranchos de los Feiz, of L. Brander, de los Berdugos, and Rosa de Castilla; containing 31815 acres of land, and made a map of the same, on a scale of 8 inches per mile showing besides the said boundaries, the Copy of the C. 1 Map and the Donation Lots "Hancock's Survey", South of Pico Street and bearing this Title in one of the corners:

"Plat of the boundaries of the Pueblo de Los Angeles, surveyed in July 1855 by George Hansen, Deputy County Surveyor of Los Angeles County California" and near the centre of the Map, this Title.

"Plan de la Ciudad de Los Angeles, Surveyed by E.O.C. Ord, Lt U.S.A., Wm R. Hutton, Assistant August 29 1849. - Donation Lots, surveyed, by Henry Hancock, April and August 1853 George Hansen, Assistant"

H. Hancock and A. Waldemar surveyed the Confirmed City Limits including 4 square leagues of land in 1857 and reformed the above mentioned Map made by George Hansen in 1855 so as to conform to their new survey, that is to say they cut off the exterior part of said Map retaining only the certain part representing 4 square leagues, and extended thereon, over unsurveyed land, the lines of the 35 acre Lots, north of Pico Street on the West of the City and north of Washington Street on the East of the City; numbered the same; and wrote in the North-east Corner of said remaining part the following Title

Map of the City Los Angeles showing the confirmed Limits surveyed August 1857 by Henry Hancock U.S. Dep. Surveyor."

This remaining central part of said Map hangs now in the Mayor's Office, and is marked, "Los Angeles City Maps No 2."

The exterior pieces cut off from said Map were kept by Mayor Nichols in the Mayor's Office and were lost when Marchesault was Mayor; - they contained the title in one of the corners, the names of adjoining Ranchos, and the following Blocks of the Donation Lots 5 6 part of 7 8 9 10 11 12 13 14 15 16 part of 17 18 19 20 21, Part of 22 and 23, 24, 25, 26, 27 28 29 30 31, 32, 33, 34, 35 36, 37, 38, 39, a part of 2 and 3 and Block 4.

George Hansen delineated on his Map of 1855 only the 35-acre Lots South of and none north of Pico Street to the west side of the City and none north of Washington Street on the East side of the City.

The lines and figures of the 35-acre lots and Blocks on the reformed Map North of Pico Street, made by Waldemar in 1857 are shown on this Map in Red Ink.

The numbers of Blocks 24, 25, 26, 27, 28, 29, 30, 31, 32, 33, 34, 35, 36, 37, 38, and 39 appear now twice; namely as the numbers of the original Donation Lots, south of the Confirmed boundary of the City and, also on the Extension of Hancock's Survey drawn 1857 by Waldemar.

All the 35-acre Lots granted prior to August 1857, and being described as Lots in Blocks 24, 25, 26, 27, 28, 29, 30, 31, 32, 33, 34, 35, 36, 37, 38, and 39 are situated in the Donation Lots South of the Confirmed City Limits and the 35-acre lots granted after 1857 of the same denomination, are situated within the limits of the Extension of Hancock's Survey North of Pico Street.

Los Angeles Jan. 19 1871

George Hansen.

State of California }
County of Los Angeles }

On this 2nd day of February AD one thousand eight hundred and Seventy one, 1871, before me Joseph Huber Jr a Notary Public in and for said County duly Commissioned and Sworn personally appeared George Hansen whose name is subscribed to the above map and who is, personally known to me, acknowledged to me that the above Map and notes are true and correct



In Witness whereof, I have hereunto set my hand and affixed my official seal, the day and year in this Certificate first above written

Joseph Huber Jr

Notary Public

Recorded May 6 1871 at 3⁰⁰ P.M.
at request of Henry Dockweiler