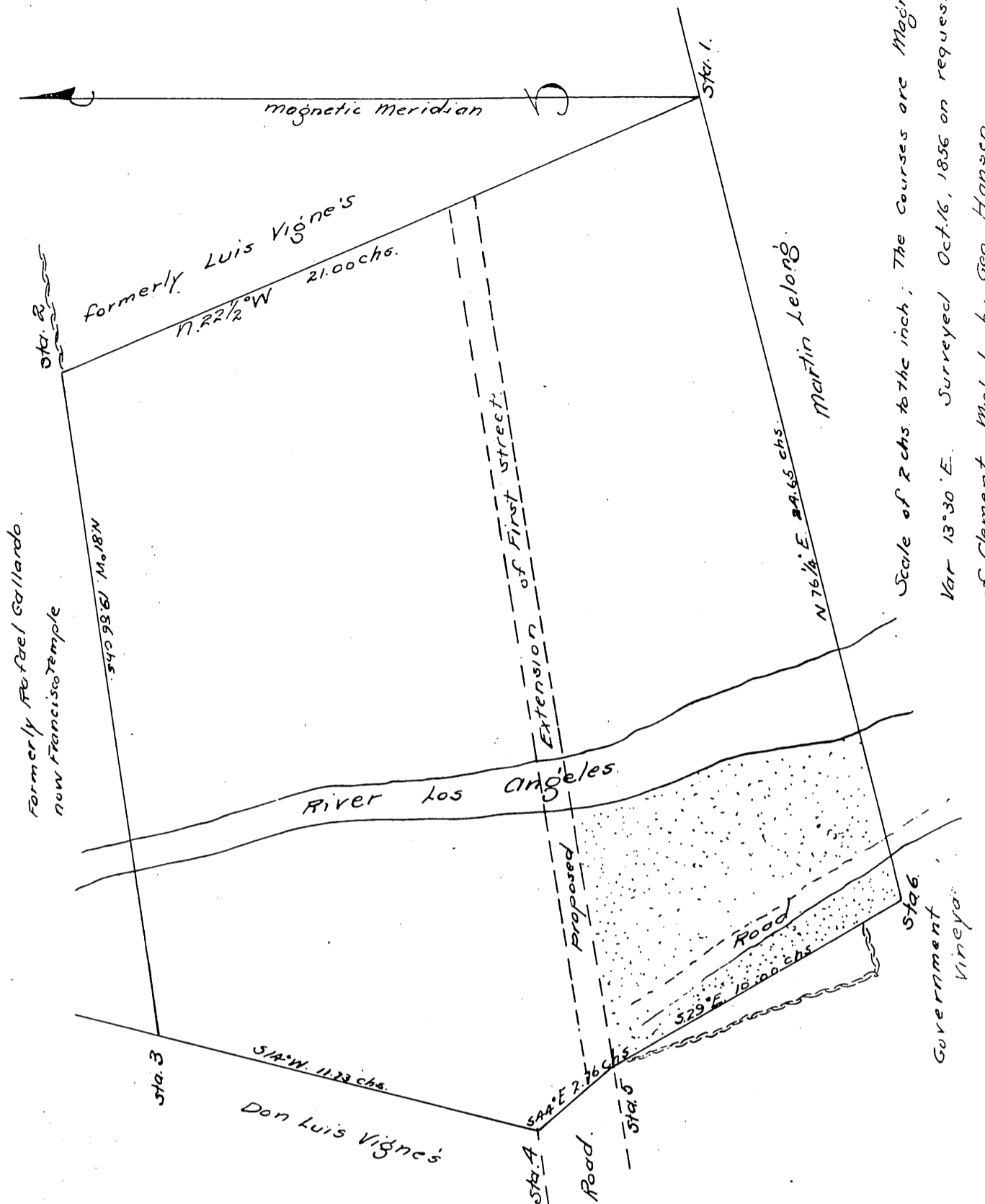


Map of a Tract of Land

Map of
City Grant to
Juan Ramirez



Scale of 2 chs to the inch; The Courses are Magnetic,
Var 13° 30' E. Surveyed Oct. 16, 1856 on request
of Clement Michel by Geo. Hansen.

situate in the Eastern part of Los Angeles City original
granted by said City to Juan Ramirez by sheriff's sale of June 16
1856 conveyed to Azra. W. Childs and by him sold June 17th 1856
to the present proprietor Mr. Clement Michel and in the respective
deeds described as follows:

it tract of land in the County of Los Angeles with a vineyard
"about 2000 vines and bounded on the North by the lands of
Rafael Gallardo on the South by the lands of Martin Le Long,
on the East by the lands of Louis Vignes and on the West and crossing
"Los Angeles River by the lands of said Vignes said tract being
in length 500 Varas more or less, and in breadth 700 Varas more
or less"

A tract of land of 700 by 500 Varas contains $60 \frac{76}{100}$ acres;
lines of this survey embrace only $52 \frac{89}{100}$ acres; that is $7 \frac{61}{100}$
less than the title calls for.

A full true and correct copy of the original recorded this 10th
of June 1871 at the request of M. Clement
By J. D. Woth
By S. H. Woth