

County Surveyors Office
 State of California
 County of Los Angeles

I hereby certify the
 within to be a correct Plan of a Survey made by me
 at request and under instructions of J. Bixby & Comp.,
 showing the subdivision of Part of the Rancho "Los
 Cerritos" County and State aforesaid.

Los Angeles June 12th 1872.

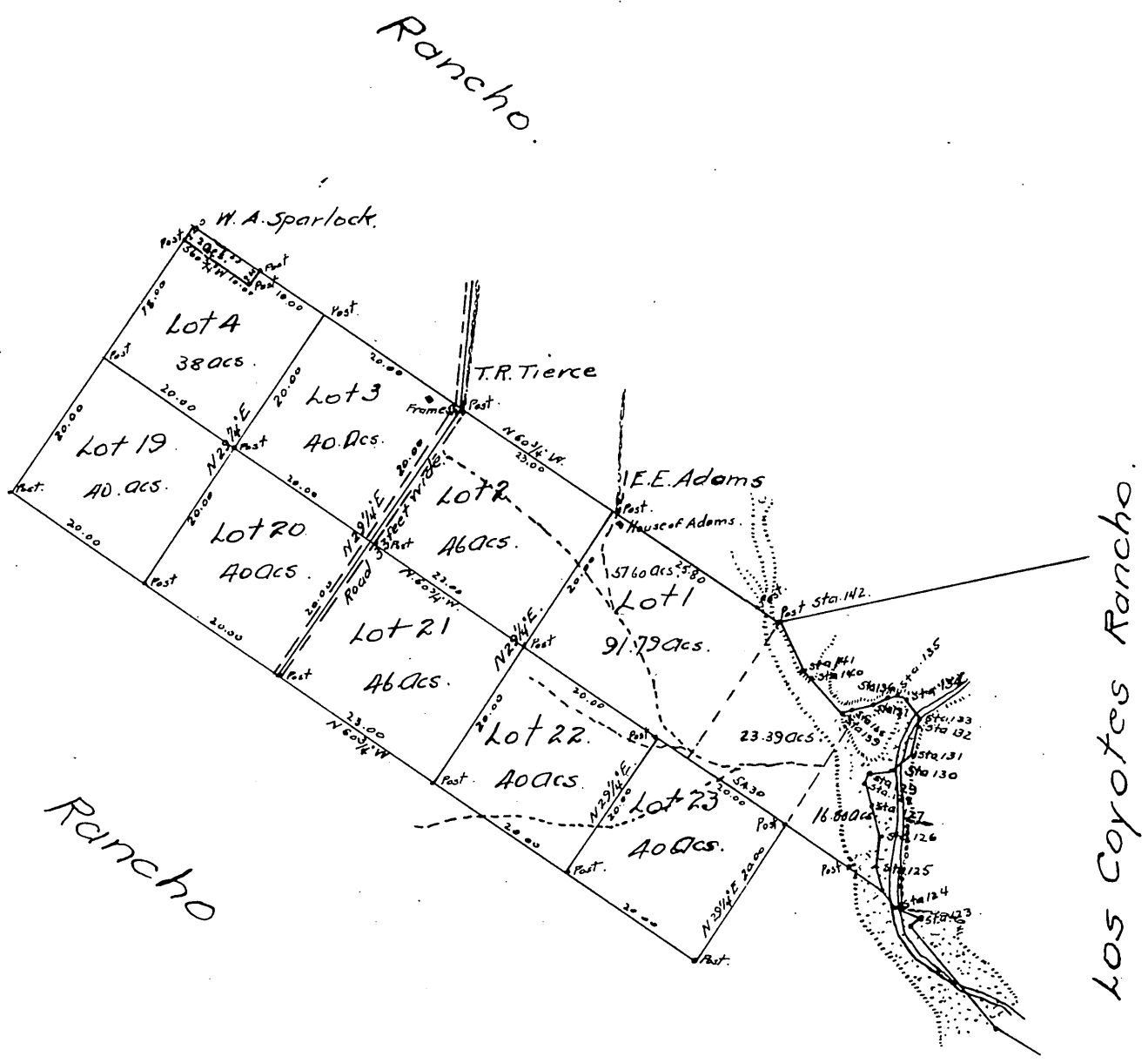
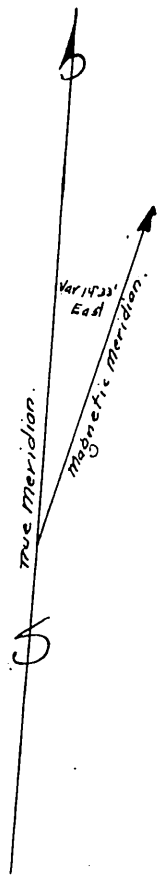
Frank Lecoeuvre
 County Surveyor of Los Angeles County

True Meridian Courses.
 Variation 14° 33' East.
 Scale 20 chains pr. inch.



Courses of East boundary of Lot 1.

No.	Course	Dist.	No.	Course	Dist.
141	S. 29 1/4° E.	8.00	132	S. 19 1/4° E.	0.85
140	S. 62° E.	1.00	131	S. 11° W.	4.00
139	S. 46 1/4° E.	5.00	130	S. 50 1/4° W.	3.00
138	S. 79 1/2° E.	1.00	129	S. 78 1/2° W.	3.00
137	N. 70° E.	4.00	128	S. 77 1/2° W.	1.00
136	N. 59 1/2° E.	2.00	127	S. 6° E.	3.00
135	N. 78° E.	1.00	126	S. 14° E.	3.00
134	N. 73° E.	1.00	125	S. 1 1/2° W.	4.00
133	S. 44 1/2° E.	3.00	124	S. 33 1/4° E.	2.50



A full true and correct copy of the Original - Recorded
 request of J. Durby & Co. June 4th 1872. at 11 hrs a.m.
 C.A. W. Totten Recorder
 By C. W. Gould Depu