

PLAT  
OF THE  
**1000 VARA  
TRACT**

Ceded by  
Manuel Michel Torena Governor of the Californias.

to

*Samuel an Indian*  
and now owned by

MARIA LOS ANGELES FELIZ de BURROWS  
and situate in the

Rancho Ex Mission de San Fernando.

Surveyed by W<sup>m</sup> P. Reynolds.

8<sup>th</sup> of February 1871.

According to the official Survey made under instructions from the Commissioners in Partition in Case No 1526 on the Docket of the District Court of the 17<sup>th</sup> Judicial District for the County of Los Angeles State of California.

Containing 177 <sup>75</sup>/<sub>100</sub> Acres.

Scale 6 chains per inch.

Variation 14°30'E.

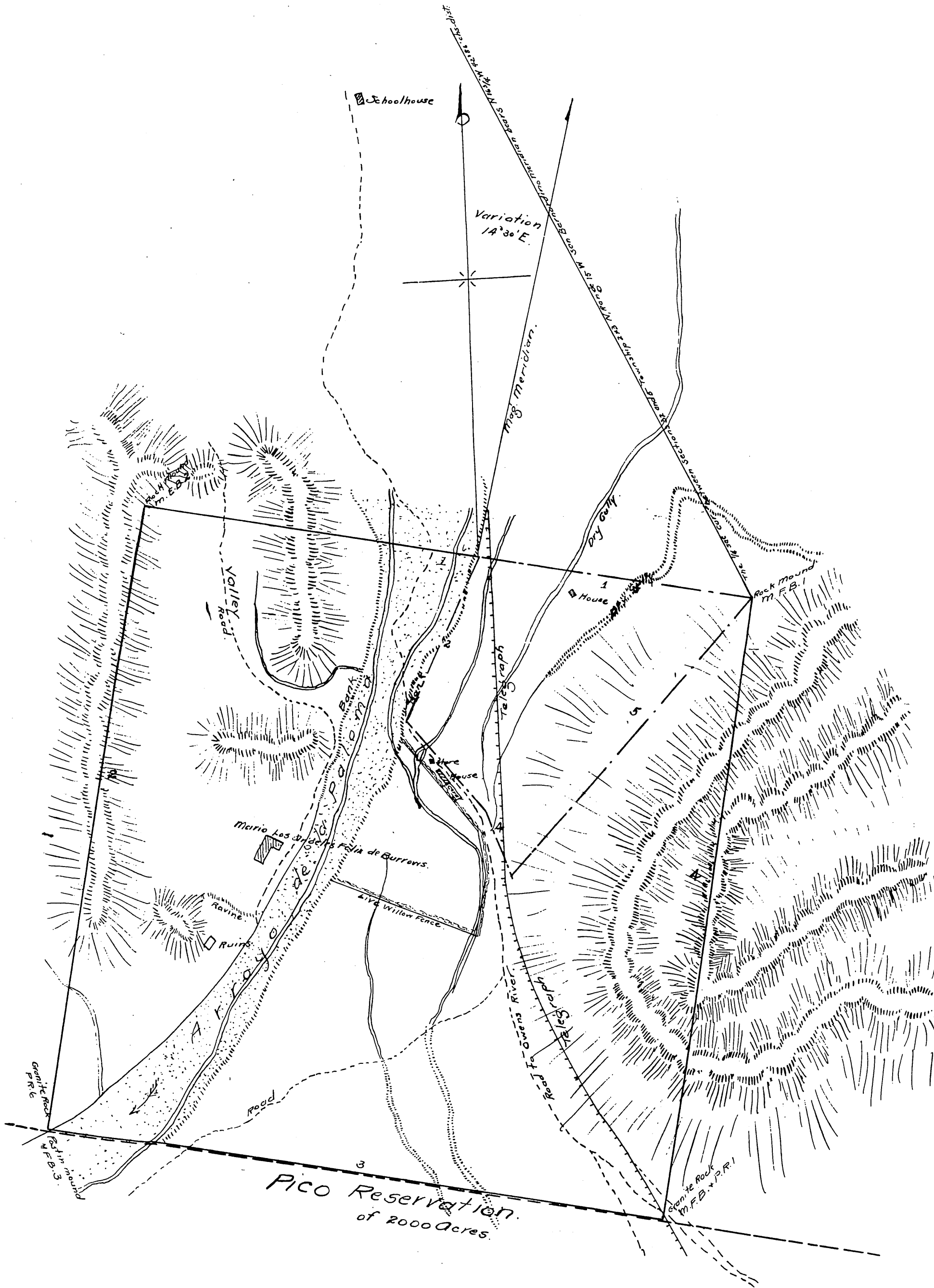
G. Wingate Delineator

Boundaries of Maria Los Angeles Felix de Burrows Tract.

Sta.	Course	Dist.
1.	N 79° W.	41.74
2.	S 11° W	42.23
3.	S. 79° E.	42.34
4.	N 10° E.	42.35.

Co-boundaries of Geronimo Lopez Tract.

No	Course	Dist.
1.	S 79° W	18.90
2.	S 26° W	12.20
3.	S 39 1/4° E	8.00
4.	S. 19° E.	5.00
5.	N 43 1/4° E.	25.04.



A full true and correct copy of the original,  
 recorded July 6, 1872 at 45 min past 2 P.M., at  
 request of C. R. Rinaldi

A. W. Potts - Recorder.