

For Puddingstone Reservoir See C.S. 8655
 For Ranchoovina Road D:58-33, R.R. 4759-28.

North line of Rancho C.S. 9242

Boundaries		
No	Course	Dist
1	S. 59 1/4 W.	27.00
2	N. 79 3/4 W.	171.14
3	N. 53 W.	203.00
4	N. 65 1/4 W.	67.00
5	N. 23 W.	272.00
6	N. 61.55 E	282.81
7	S. 68 1/4 E	414.27
8	S. 20 W.	151.00
9	S. 16 1/2 W.	170.73
10	S. 8 W.	89.00

Approved Jan. 20th 1875
 S.S. Burdett
 Commissioner of the General Land Office

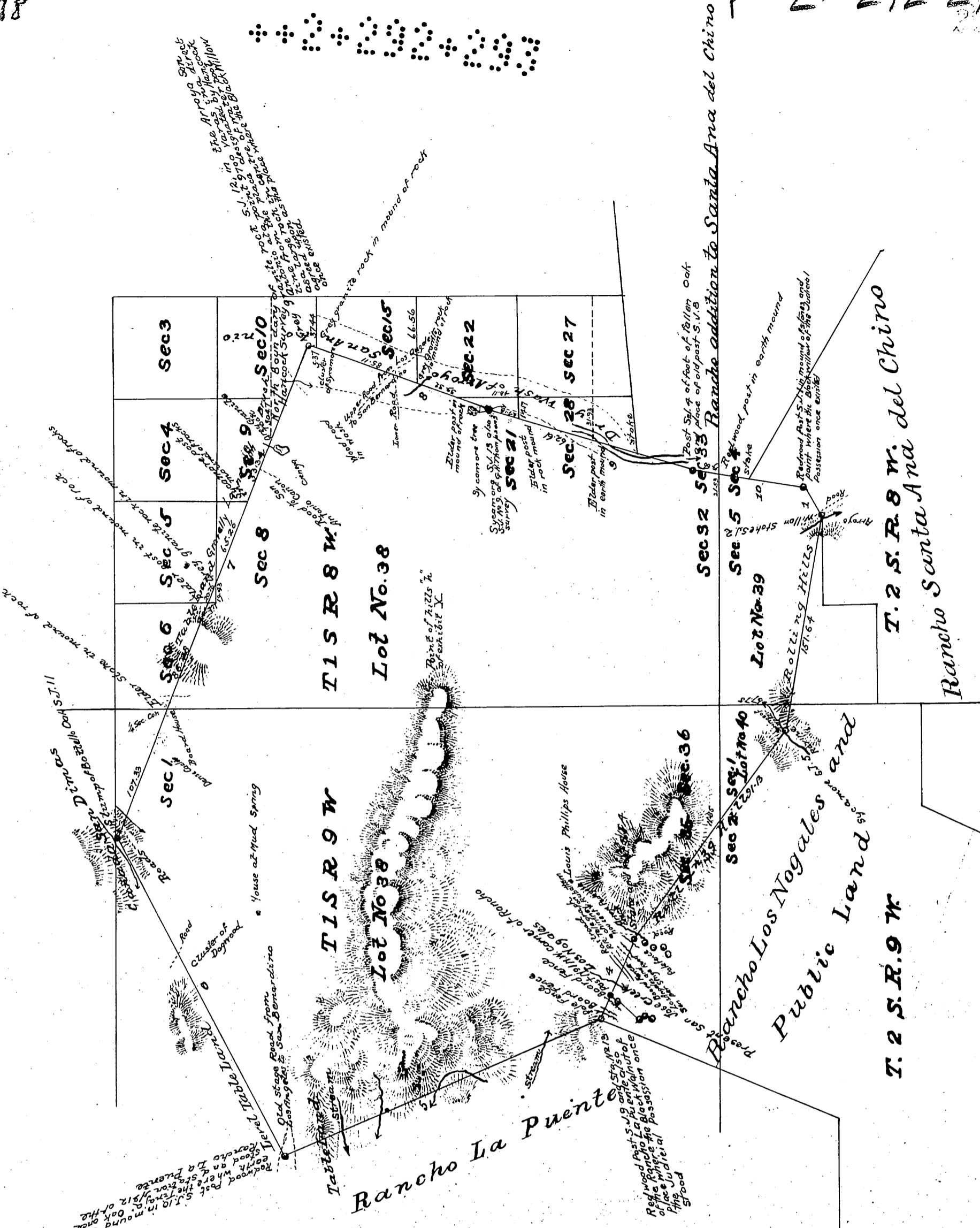
PLAT OF THE
 RANCHO SAN JOSE
 finally Confirmed to
 Dalton, Palomares and Vejar.

surveyed under instructions from the
 U.S. SURVEYOR GENERAL
 BY
 G.H. THOMPSON, DEPUTY SURVEYOR
 Aug. 1868
 and
 Wth P. REYNOLDS, DEPUTY SURVEYOR
 Feb. 1874

containing 22340^{1/2} acres
 scale 40chs. to 1 inch Variation 14° 15' to 14° 25' E.

Field Notes approved May 22nd 1874
 Jas. T. Stratton
 U.S. Survey Gen'l Cal.

Recorded Aug. 13th 1877, at 4²³ P.M.
 at request of Francisco Palomares.



Completed
 C.M.M.

P-2-292-293