

T.D. Mott
and
Leonor P de
Ballesteros

Map in
Partition.

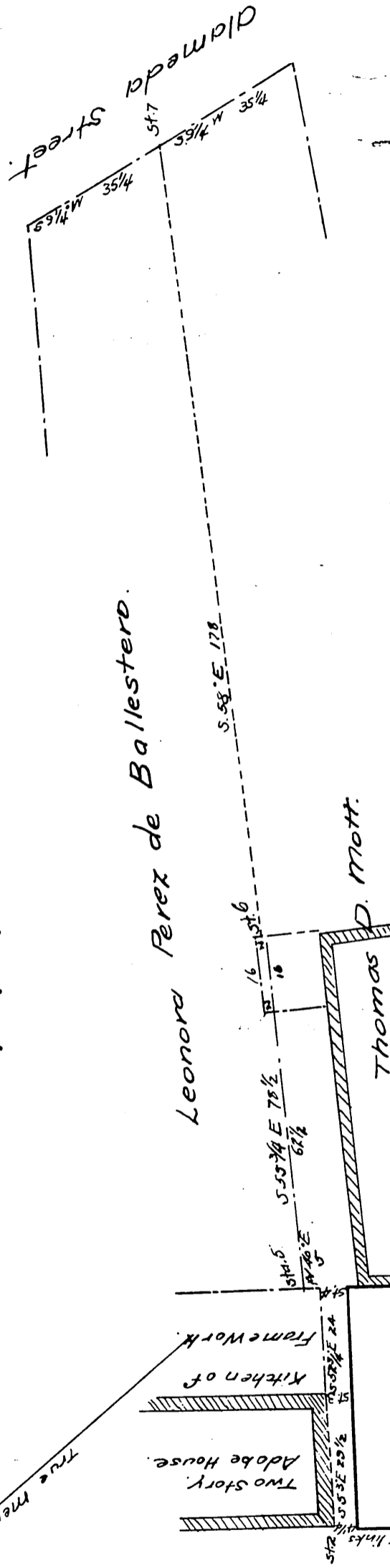
Map

of the partition line of the Ballesteros property fronting on the Plaza
in the City of Los Angeles State of California made by the pre-
sent owners of said lot namely Leonora Perez de Ballesteros and
T.D. Mott and surveyed under their personal direction Janu-
ary 10, 1873 by George Hansen

True Courses Variation 14° 45' East Distances in links

Explanation of Signs

- Adobe Walls.
- Brick Work.
- Wood Work.
- Pillars of Corridor.



Description of the line of partition. Commencing at the Western corner of the two story Adobe house of Leonora Perez de Ballesteros marked Station 2 from which pass the Western corner of the Brick house of T.D. Mott S 40 1/2° W 37 1/2' links change along the South Western face of the Adobe Wall of the said house S 53° E 29 1/2' links to the South West corner thence along the South wall of the kitchen S 52 3/4° E 57 3/4' links to the South East corner thence along the South east face of said kitchen N 40° E 5 links to the North corner thence along the North Eastern face of a row of pillars of a corridor S 57 3/4° E 78 1/2' links to the Eastern corner of said corridor thence S 58° East 178 links to a mark in the bayed fence and Alameda street 35 1/4 links from the North East corner of said fence.

Los Angeles January 10 1873
George Hansen Land Surveyor

A full, true and correct copy of the original,
recorded at request of G. B. Butter at 12 hrs.
30 min. P.M. January 13th 1873

A. W. Potts Recorder.
B. C. W. Gould Deputy.