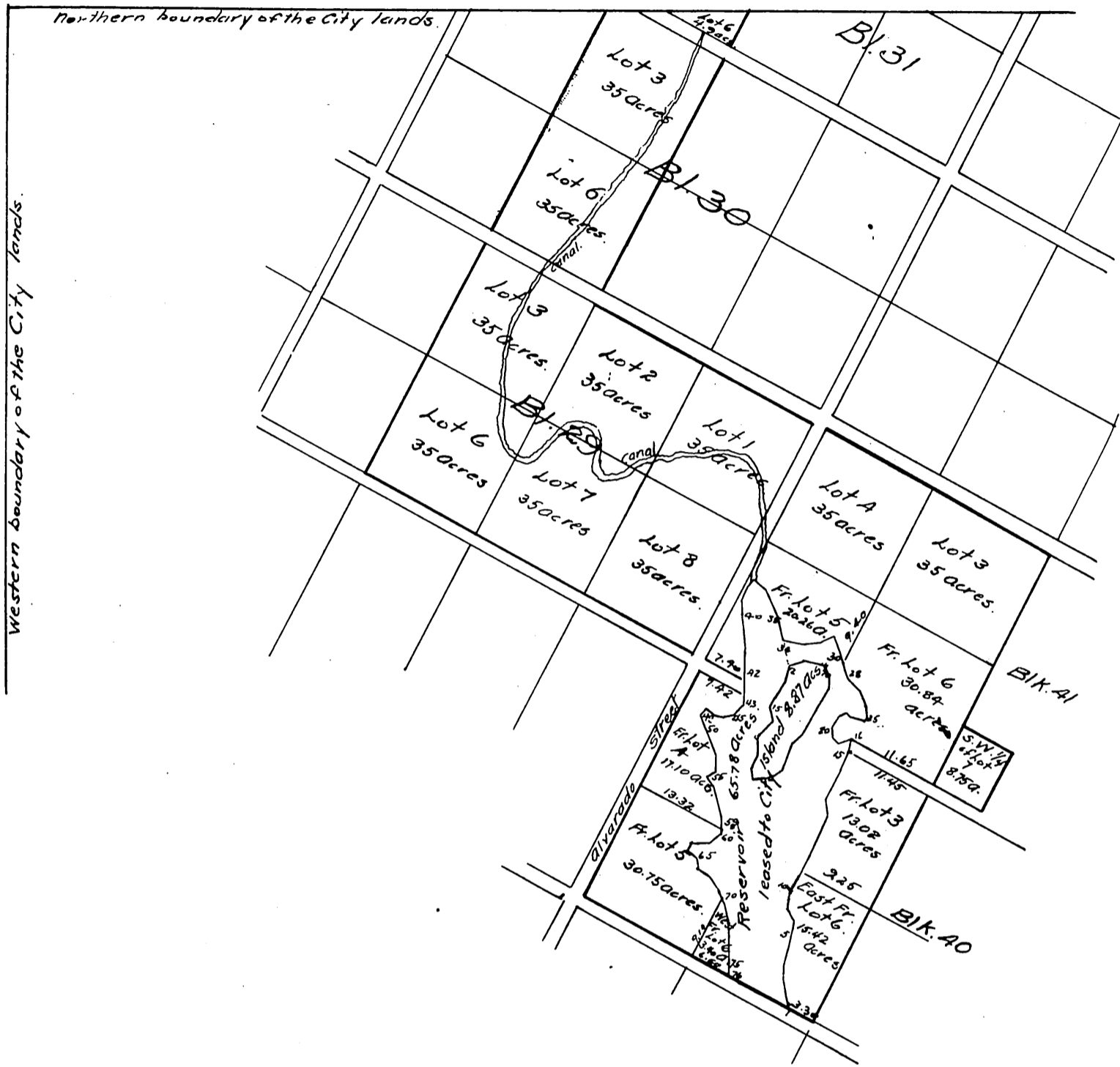




Map

of the reserved lands of the Canal and Reservoir Company in Los Angeles City Cal. showing the land to be offered for sale at public auction to be held Feb'y. 22nd 1873 and also the land reserved from said sale, which is covered by the water of the reservoir when completely filled with water to the top of the dam of forty feet high and described in a certain contract and lease between the said Canal and Reservoir Company and the City of Los Angeles of date June 29th 1872 and recorded in the County Recorders Office in Book ---



Surveyed January 6th 1873 by William Moore Scale 1 inch to 10 chains
True Courses Var 14° 45' E.

I, here by certify that the above is a correct Map of the Reservoir covering the land in the green lines with water when filled to the top level of a dam of 40 feet high, and of the reserved lands of the Canal and Reservoir Company.

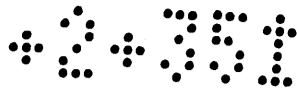
Los Angeles Jan. 23^d 1873.

William Moore.

The 22 of February being Washingtons Birth-Day the sale was postponed and held February 26th 1873.

This Map being reduced one half the scale on this record is 1 inch to 20 chains.

O. W. Potts - Recorder.
By C. W. Gould, Deputy.



Meanders of the Wet Contour of the Reservoir when filled with water to the top of a dam 40 ft high
St. Courses Dist N S E W

1	N 16 1/2 W	3.48	3.35		1.02
2	N 7 1/4 W	2.50	2.52		0.08
3	N 2° E	1.55	1.56	0.05	
4	N 9 1/2 E	2.19	2.18	0.36	
5	N 16° E	1.82	1.76	.50	
6	N 3 1/2 W	1.50			.09
7	N 6° E	1.35	1.34	.14	
8	N 28 1/2 E	2.06	1.82	.97	
9	N 41 1/2 E	2.71	2.08	1.78	
10	N 26° E	2.90	2.63	1.25	
11	N 25° E	6.67	6.10	2.79	
12	N 3 1/2 W	2.52	2.54		1.5
13	N 28° E	4.10	3.65	1.91	
14	N 22 1/2 E	3.69	3.43	1.40	
15	N 17 1/4 E	2.30	2.22	.67	
16	N 8 1/4 W	1.70	.20		1.70
17	N 57 1/2 W	0.83	.44		.71
18	N 30 1/2 W	0.78	.67		.41
19	N 53 1/4 E	0.82	.82	.08	
20	N 41° E	1.30	.98	.85	
21	N 8 1/4 E	1.00	.14	.98	
22	S 59° E	1.42		.57	.25
23	S 63 1/2 E	1.42		.64	1.26
24	N 32 1/2 E	1.28	1.08	.68	
25	N 4° W	1.64	1.65		.71
26	N 23 1/2 W	2.48	2.29		1.00
27	N 36 1/4 W	2.23	1.81		.32
28	N 36° W	1.92	1.56		1.15
29	N 16 1/2 W	1.68	1.62		.50
30	N 9° W	2.23	2.23		.36
31	S 78° W	2.79		.58	2.76
32	S 88° W	2.40		.08	2.43
33	N 81° W	3.40	.53		3.39
34	N 9° W	3.45	2.42		0.55
35	N 27 1/2 W	4.40	4.12		1.65
36	N 57 1/2 W	2.45	1.31		2.10
37	S 63 1/2 W	1.64		.74	1.48
38	S 16° W	1.92		1.83	.54
39	S 2 1/2 E	2.78		2.76	.12
40	S 6° E	4.05		3.99	.42
41	S 3° E	2.86		3.83	.20
42	S 8 1/2 W	3.37		3.31	0.50
43	S 21 1/4 W	1.98		1.89	.71
44	S 49° W	.98		.64	.75
45	S 88 1/2 W	1.18		.83	1.19
46	N 53° W	1.62	.86		1.40
47	N 42 1/2 W	1.69	1.25		1.16
48	S 34 1/2 W	1.00	.82		.58
49	S 24° E	2.52	2.28	1.01	
50	S 23 1/4 E	2.98	2.12	.91	
51	S 12° E	1.77	1.72	.37	
52	S 10 1/4 W	1.23	1.20		.23
53	S 27 1/2 W	1.85	1.28		.68
54	S 50 1/2 W	2.05	1.29		1.60
55	S 43 1/2 E	1.50	1.09	1.02	
56	S 24 1/2 E	2.40	2.16	.99	
57	S 15° E	1.90	1.82	.50	
58	S 6 1/4 E	2.08	2.05	.23	
59	S 6 1/2 W	1.30	1.28		.14
60	S 34 1/4 W	1.50	1.23		.86
61	S 77 1/2 W	1.00	.22		.99
62	N 84° W	2.53	.27		2.55
63	S 23 1/2 W	1.05	.97		.42
64	S 55° E	1.84	1.04	1.49	
65	S 25 1/2 E	1.65	1.48	.70	
66	S 66 1/2 E	.95	.38	.86	
67	S 40° E	1.25	.96	.79	
68	S 23 1/2 E	1.29	1.17	.50	
69	S 14° E	2.23	2.14	.53	
70	S 10 1/2 E	2.30	2.25	.41	
71	S 15° E	1.56	1.50	.40	
72	S 10 1/2 E	2.48	2.42	.44	
73	S 2 1/2 E	1.70	1.69	.07	
74	S 5° E	1.79	1.78	.16	
75	S 6 1/2 W	2.18	2.17		.25
76	S 62° E	9.00	4.23	7.78	

Containing 74.65515 Acres
Island 8.87665 "
Reservoir 65.77850 "

From SW corner of Beauty's fence at S corner of lots 6 & 7 of Block 40 bears S 1/2 of this survey N 62° W 2.30 dist. St. 1 the tower at the end of the tunnel bears N 62° W 2.75 chs. from St. 1 turn S 62° E 1.80 to centre of Beauty's fence.

Meanders of the Island.

St.	Courses	Dist	N.	S.	E.	W.
1	S 84° E	1.52				
2	N 53 1/2 E	1.61				
3	N 50 1/2 E	2.03				
4	N 20 1/4 E	4.19				
5	N 35° E	2.16				
6	N 37° E	2.69				
7	N 29 1/2 E	4.50				
8	N 4 1/4 E	1.60				
9	N 36 1/4 W	1.77				
10	N 82 1/2 W	2.81				
11	S 64 1/2 W	2.00				
12	S 24 1/4 W	3.03				
13	S 34 1/2 W	2.98				
14	S 20 1/2 W	1.14				
15	S 11° E	2.25				
16	S 34 1/2 W	3.30				
17	S 1° E	2.50				
18	S 18° W	2.35				
19	S 1 1/2 W	1.81				

Containing 8.87665 Acres.
From Station 7 the corner of lots 3 and 4 of Block 40 (south side of Block) bears S 57 1/2° E 0.52 chs. from Sta. 12 bears Station 34 on the Wet contour of the Reservoir at 40 feet high N 25° W 4.45 chs.

Boundaries of the fractional lots adjoining the Reservoir

St. Courses	Dist	St. Courses	Dist
Fractional lot 5 Block 41			
30	N 16 1/4 W	0.56	
31	N 9° W	2.23	
32	S 78° W	2.79	
33	S 88° W	2.40	
34	N 81° W	3.40	
35	N 9° W	3.45	
36	N 21 1/4 W	4.40	
37	S 51 1/2 W	2.45	
38	S 63 1/2 W	1.64	
39	S 16° W	1.92	
40	S 2 1/2 E	2.78	
41	S 6° E	4.05	
42	S 3° E	3.86	
	S 8 1/2 W	0.88	
	N 62° W	7.40	
	N 28° E	18.72	
	S 62° E	18.72	
	S 28° W	9.40	
13.02233 Acres			
Fractional lot 6 Block 41			
16	N 17 1/4 E	0.09	
17	N 82 1/2 W	1.70	
18	N 57 1/4 W	.83	
19	N 30 1/2 W	.78	
20	N 5 1/2 E	.82	
21	N 41° E	1.30	
22	N 81 1/2 E	1.00	
23	S 59° E	1.42	
24	S 63 1/4 E	1.42	
25	N 32 1/4 W	1.28	
26	N 4° W	1.64	
27	N 23 1/2 W	2.48	
28	N 36 1/4 W	2.23	
29	N 16 1/4 W	1.12	
	N 28° E	9.40	
	S 62° E	18.72	
	S 28° W	18.72	
	N 62° W	11.65	
17.10054 Acres			
West fraction of lot No. 6 Block 40.			
71	S 10 1/2 E	1.80	
72	S 15° E	1.86	
73	S 10 1/2 E	2.48	
74	S 2 1/2 E	1.70	
75	S 5° E	1.79	
76	S 6 1/2 W	2.18	
	N 6° W	6.60	
	N 28° E	9.10	
3.39873 Acres			
East Fraction lot 6 Block 40			
1	N 16 1/4 W	3.48	
2	N 13 1/4 W	2.52	
3	N 2° E	1.55	
4	N 9 1/2 E	2.19	
5	N 16° E	1.82	
6	N 3 1/2 W	1.50	
7	N 6° E	1.35	
8	N 28 1/4 W	2.06	
9	N 41 1/2 E	2.71	
10	W 26° W	2.16	
	S 62° W	9.25	
	S 28° W	18.72	
	N 62° W	3.30	
15.41765 Acres			
Fractional lot 3 Block 40			
11	N 26° E	.80	
12	N 25° E	.67	
13	N 33 1/4 W	2.52	
14	N 28° E	4.10	
15	N 22 1/2 E	3.69	
	N 17 1/4 E	.91	
	S 62° E	11.85	
	S 28° W	18.32	
	N 62° W	3.25	
20.25951 Acres			
Fractional lot 4 Block 40			
43	S 8 1/2 W	1.24	
44	S 21 1/2 W	1.98	
45	S 49° W	0.98	
46	S 88 1/2 W	1.18	
47	N 58° W	1.62	
48	S 34 1/4 W	1.00	
49	S 24° E	2.52	
50	S 23 1/4 E	2.43	
51	S 12° E	1.77	
52	S 10 1/4 W	1.23	
53	S 27 1/2 W	1.85	
54	S 50 1/2 W	2.05	
55	S 43 1/2 E	1.50	
56	S 24 1/2 E	2.40	
57	S 15° E	1.90	
58	S 6 1/4 E	2.08	
59	S 6 1/2 W	1.30	
60	S 34 1/4 W	1.50	
61	S 77 1/2 W	1.00	
62	N 84° W	2.53	
63	S 23 1/2 W	1.05	
64	S 55° E	1.84	
65	S 25 1/2 E	1.65	
66	S 66 1/2 E	.95	
67	S 40° E	1.25	
68	S 23 1/2 E	1.29	
69	S 14° E	2.23	
70	S 10 1/2 E	2.30	
	S 15° E	1.56	
	S 10 1/2 E	2.48	
	S 2 1/2 E	1.70	
	S 5° E	1.79	
	S 6 1/2 W	2.18	
	S 62° E	9.00	
30.8455 Acres			
Fractional lot 5 Block 40			
59	S 6 1/2 W	1.30	
60	S 34 1/4 W	1.50	
61	S 77 1/2 W	1.00	
62	N 84° W	2.53	
63	S 23 1/4 W	1.05	
64	S 55° E	1.84	
65	S 25 1/2 E	1.65	
66	S 66 1/2 E	.95	
67	S 40° E	1.25	
68	S 23 1/2 E	1.29	
69	S 14° E	2.23	
70	S 10 1/2 E	2.30	
30.75106 Acres			

A full true and correct copy of the original Map Recorded April 11th 1873 at 55 min past A.P.M. at request of M. Keller.
A.W. Potts Recorder.
By C.W. Sould Deputy.