

Map  
of  
Division between A. Roches  
and  
Bruno Y. Abila.

Sta. 1 S 31 3/4° W 17.85 chs.

Sta. 2 S 60 3/4° E 10.78 "

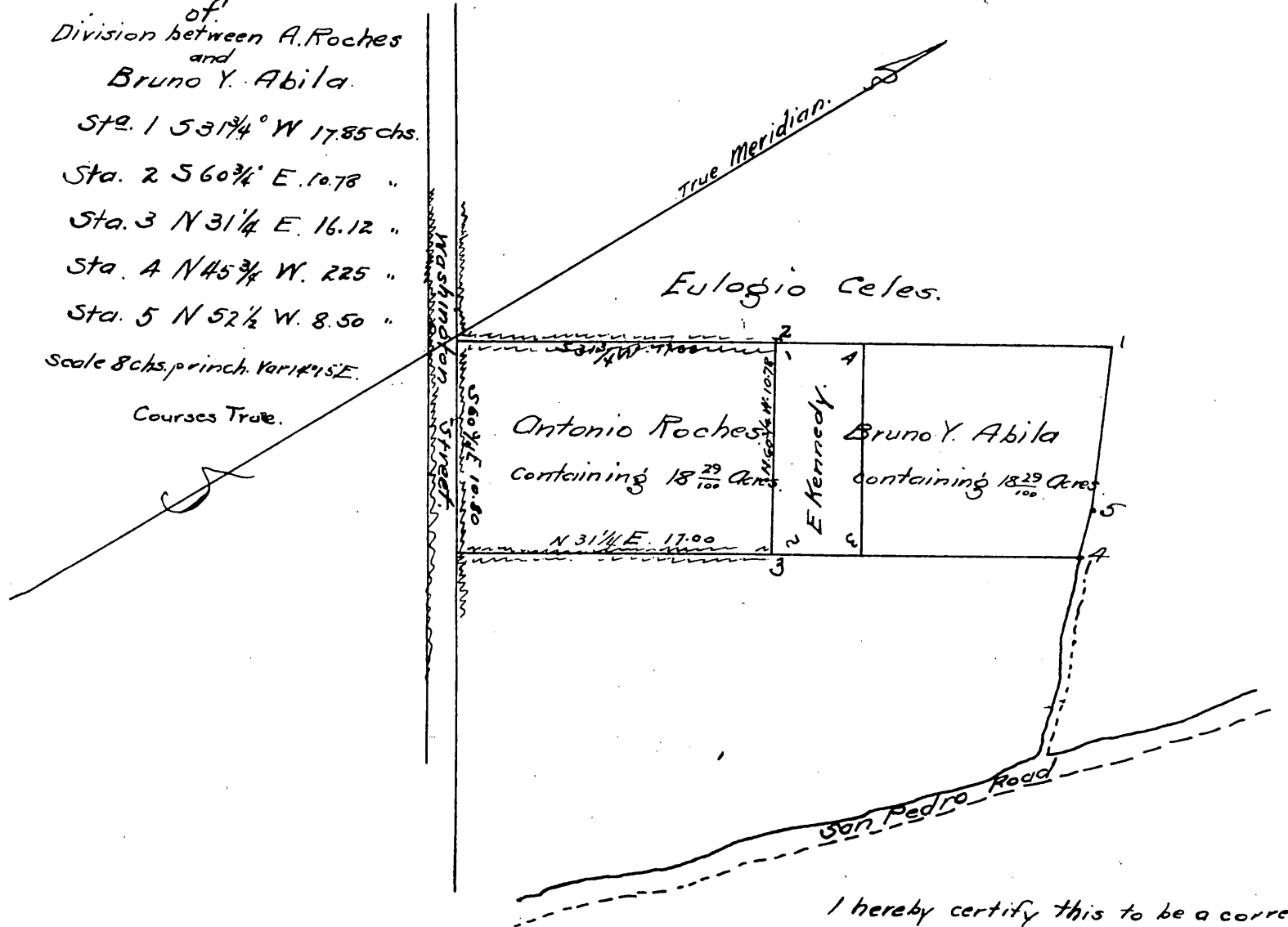
Sta. 3 N 31 1/4° E 16.12 "

Sta. 4 N 45 3/4° W 225 "

Sta. 5 N 52 1/2° W 8.50 "

Scale 8 chs. princh. Var. 14° 15' E.

Courses True.



I hereby certify this to be a correct  
plat of a Survey made June 27, 1868  
at request of Bruno Y. Abila.

S. Seibold.

Dep. County Sur.  
of Los Angeles County.

A full true and correct copy of the original  
Map recorded August 28th 1873 at 25 min.  
past 1 P.M. at request of E. Kennedy.

A. W. Potts - Recorder.  
By C. W. Gould Deputy.