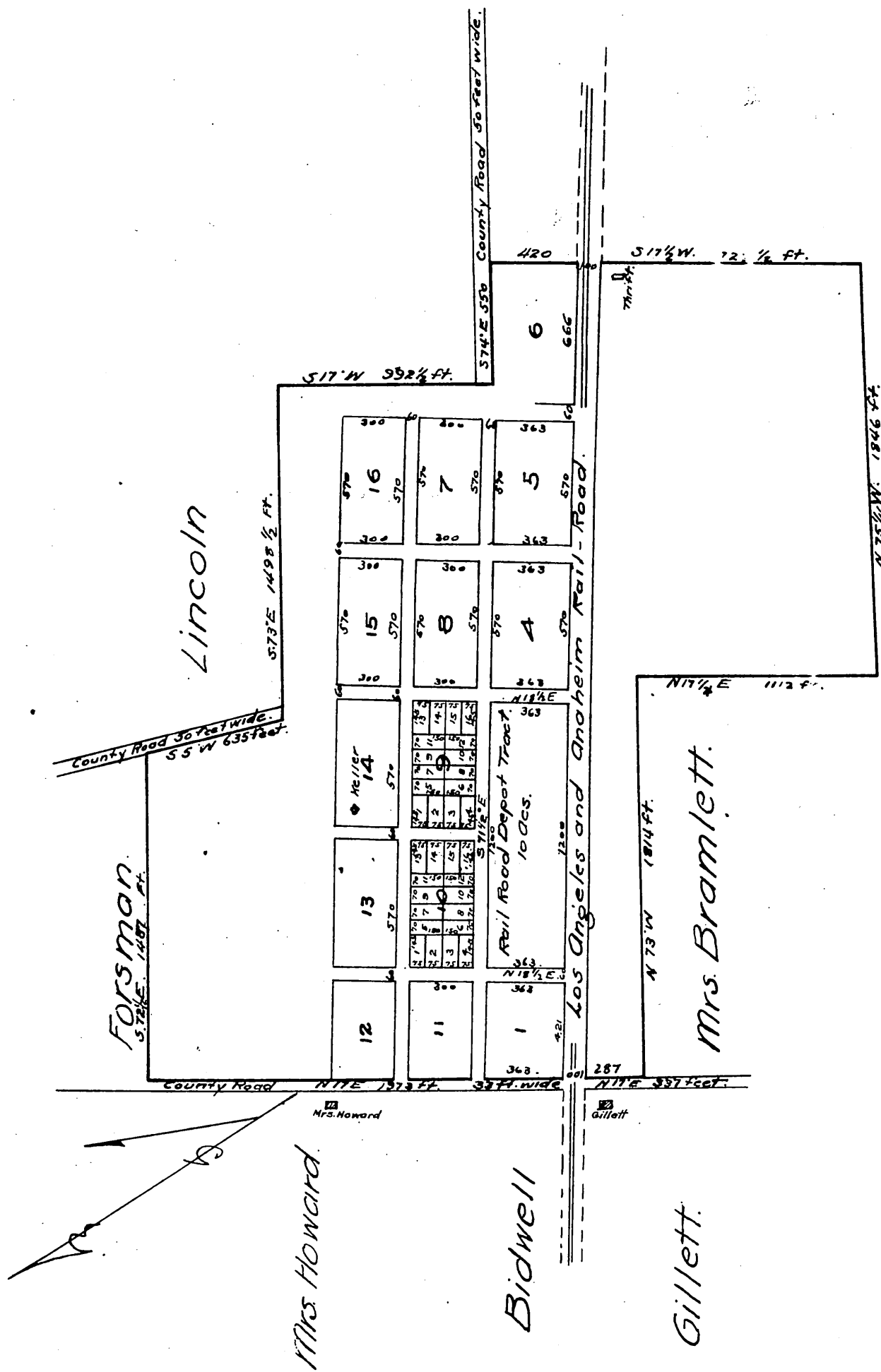


MAP
 of the Tract of the
 Downey Land Association
 Los Angeles County Cal.

Surveyed and subdivided in October 1873
 at request and under instructions of M. D Crawford Esq.

By
 Frank Lecourreur.
 County Surveyor of Los Angeles County.



MORROW.

Mrs. Bramlett.

Scale 200 feet per inch.
 Magnetic Courses.
 Variation 14° 55' East.

A full true and correct copy of original map
 (reduced to 1/3 of the original size) returned at
 request of M. D Crawford, October 13, 1873 at 11 A.M.
 A. W. Fotts Recorder.
 By C. W. Gould Deputy.