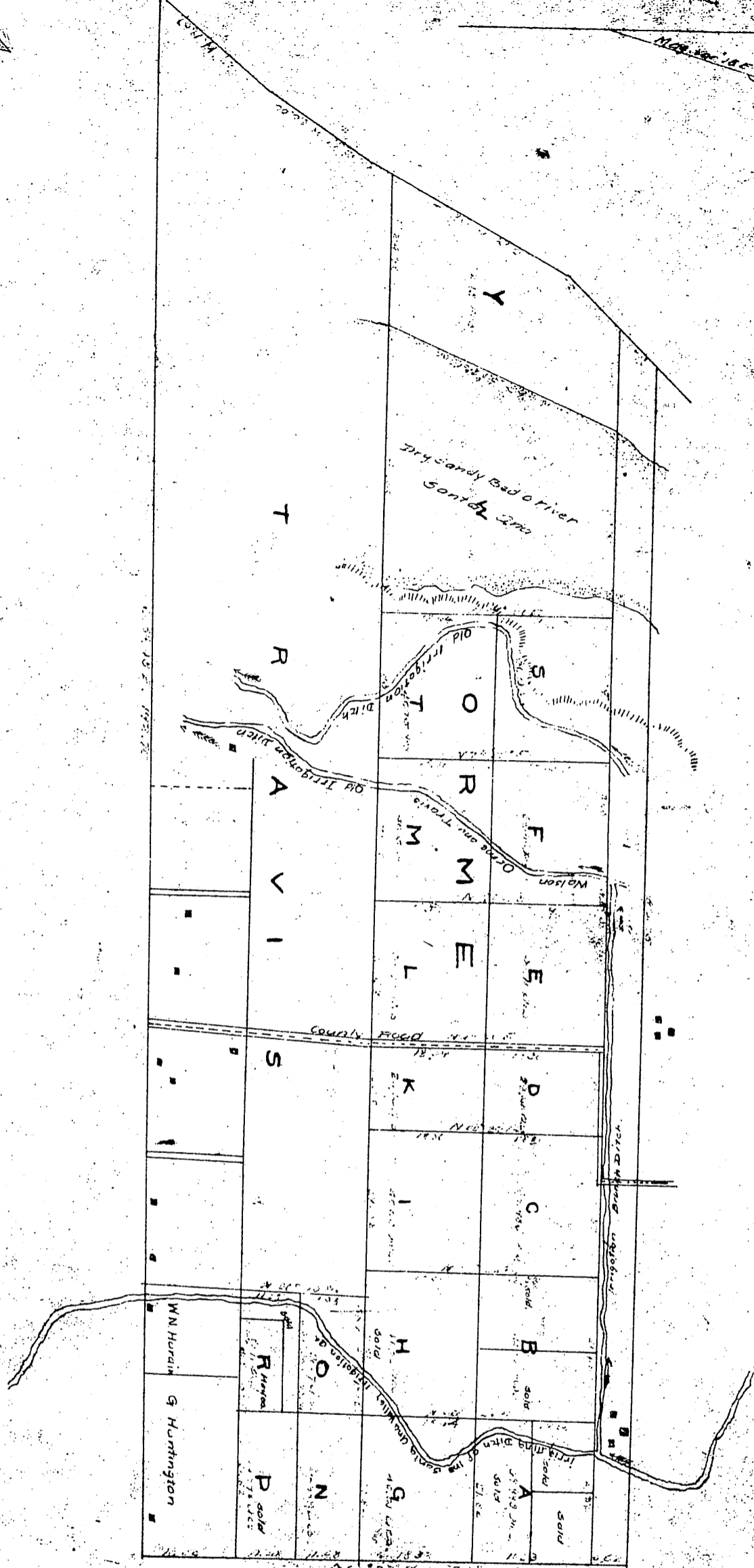


0A-A-A



# MAP

Of a portion of the  
**RANCHO SANTIAGO DE SANTA ANA.**  
 Situate in the County of Los Angeles, Cal.  
 Allocated to A.S. VAN DE GRAAFF and known as the  
**VAN DE GRAAFF TRACT**

Survey of the sub division of Lots  
 Executed by W.P. REYNOLDS Feb 1. 1881

Under instructions from H.S. Orme.

Scale 10 chains to 1 inch. Var. 16° E

Recorded at request of H.S. Orme Sep 10th 1881