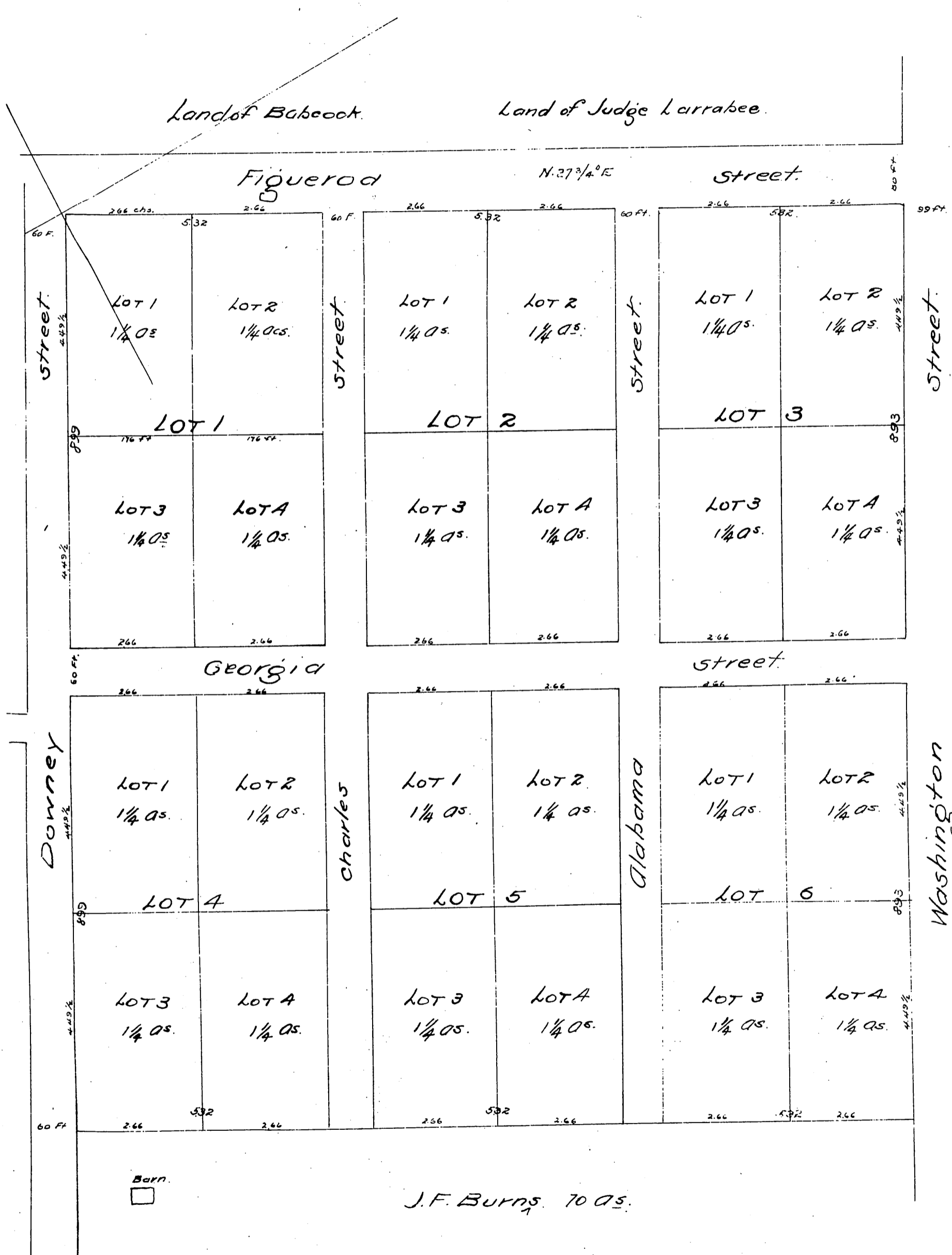


Map
of a portion of
Bell's Addition
Los Angeles City California.



Barn.
□

J.F. Burns 70 acs.

A full, true and correct copy of a portion of
the Plan of Bell's Addition, recorded at request
of E. Bouton Jan. 8th 1874 at 20 min past 10. A.M.
d.W. Potts Recorder.
By C.W. Gould Deputy.