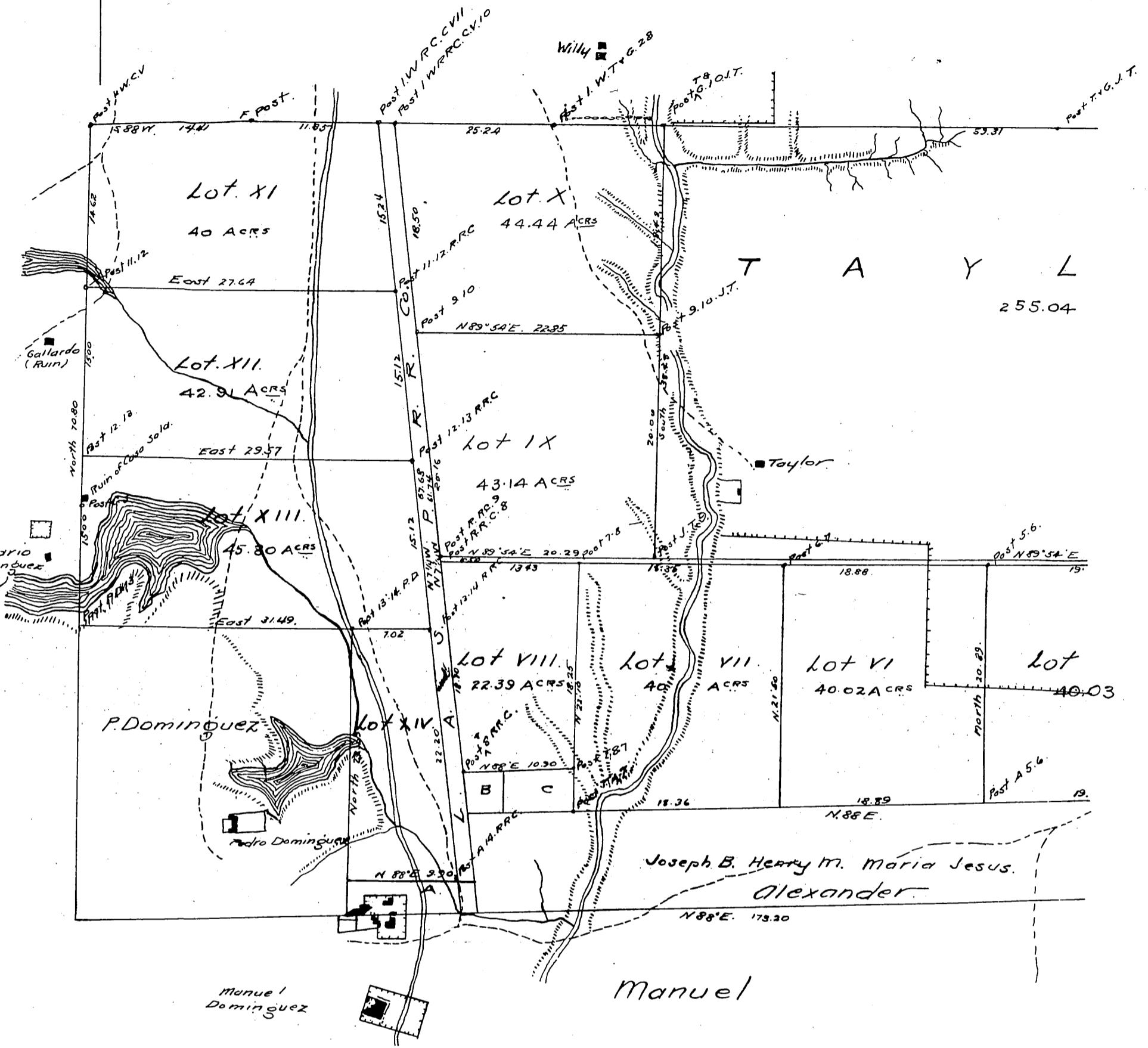


T E M P L E AND G I

Berryman Bryant et al

John G Downey Et Al



MAP
of the
Hellman Tract.
San Pedro Ranch Los Angeles County
California

surveyed and subdivided in January 1871
at request and under instructions of

I. W. Hellman Esq.
By Frank Lecourreur
County Surveyor of Los Angeles County.

Scale 10 chains pr. inch.
True Meridian Courses.
Variation 14° 45' E.

