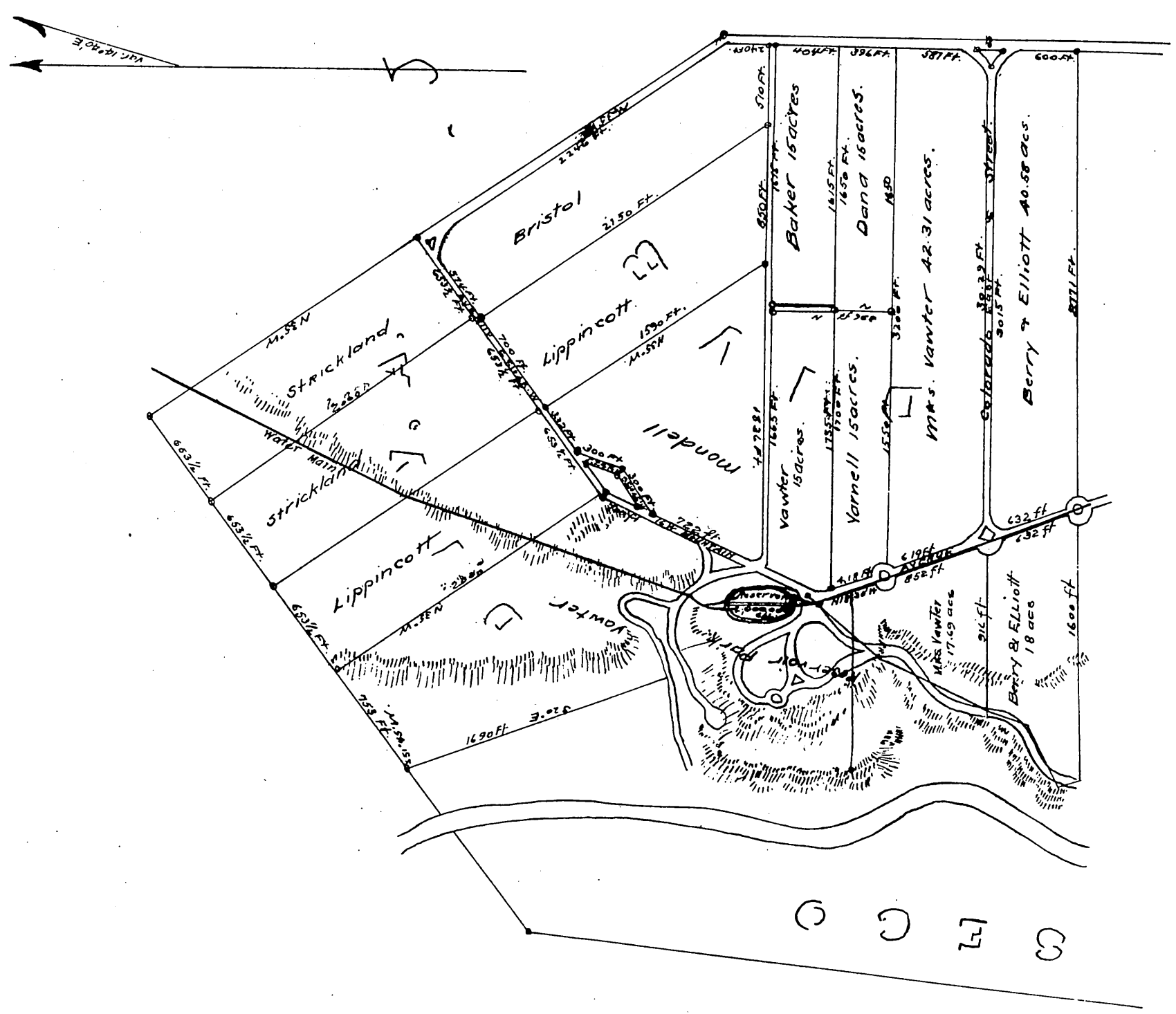
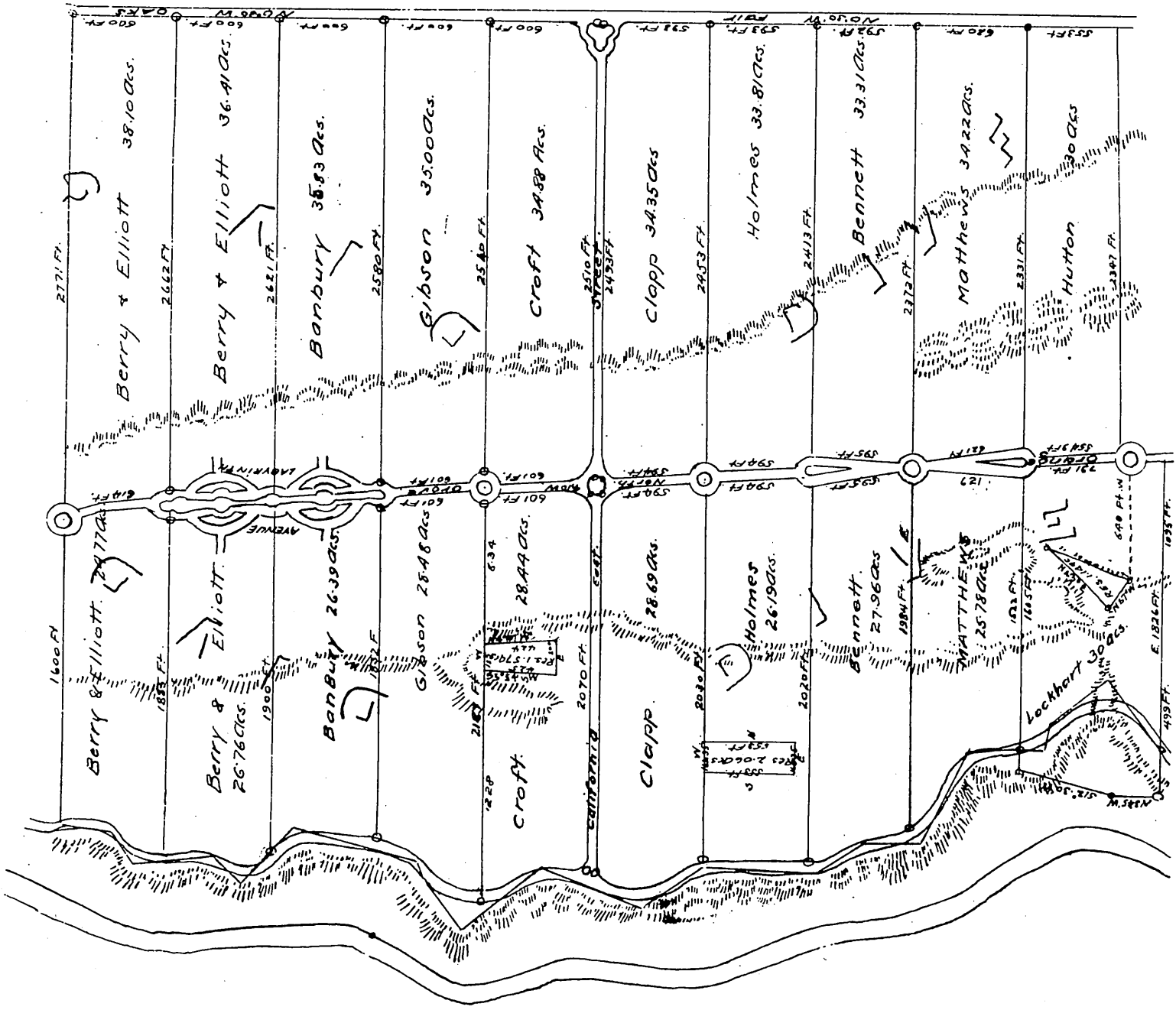
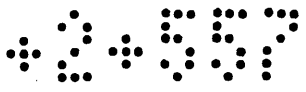
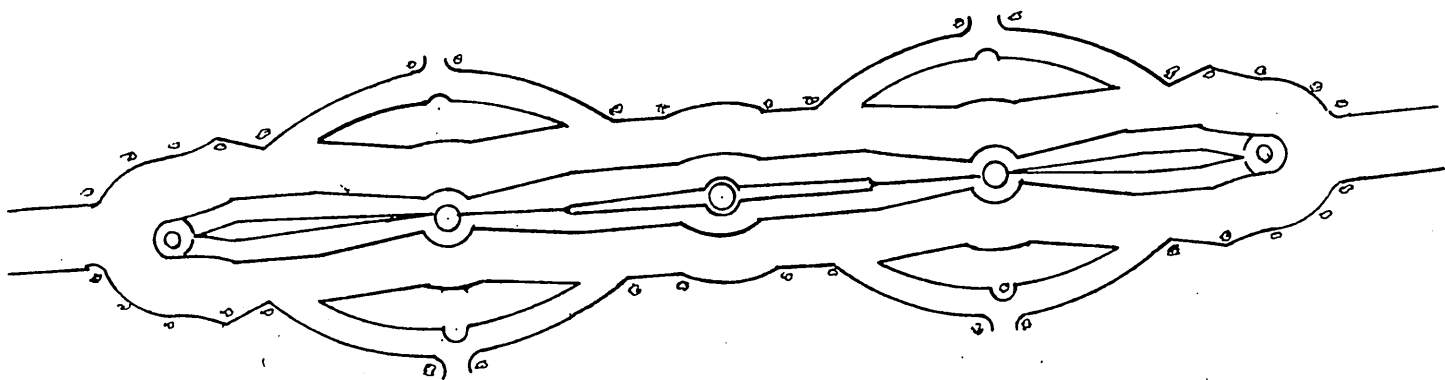


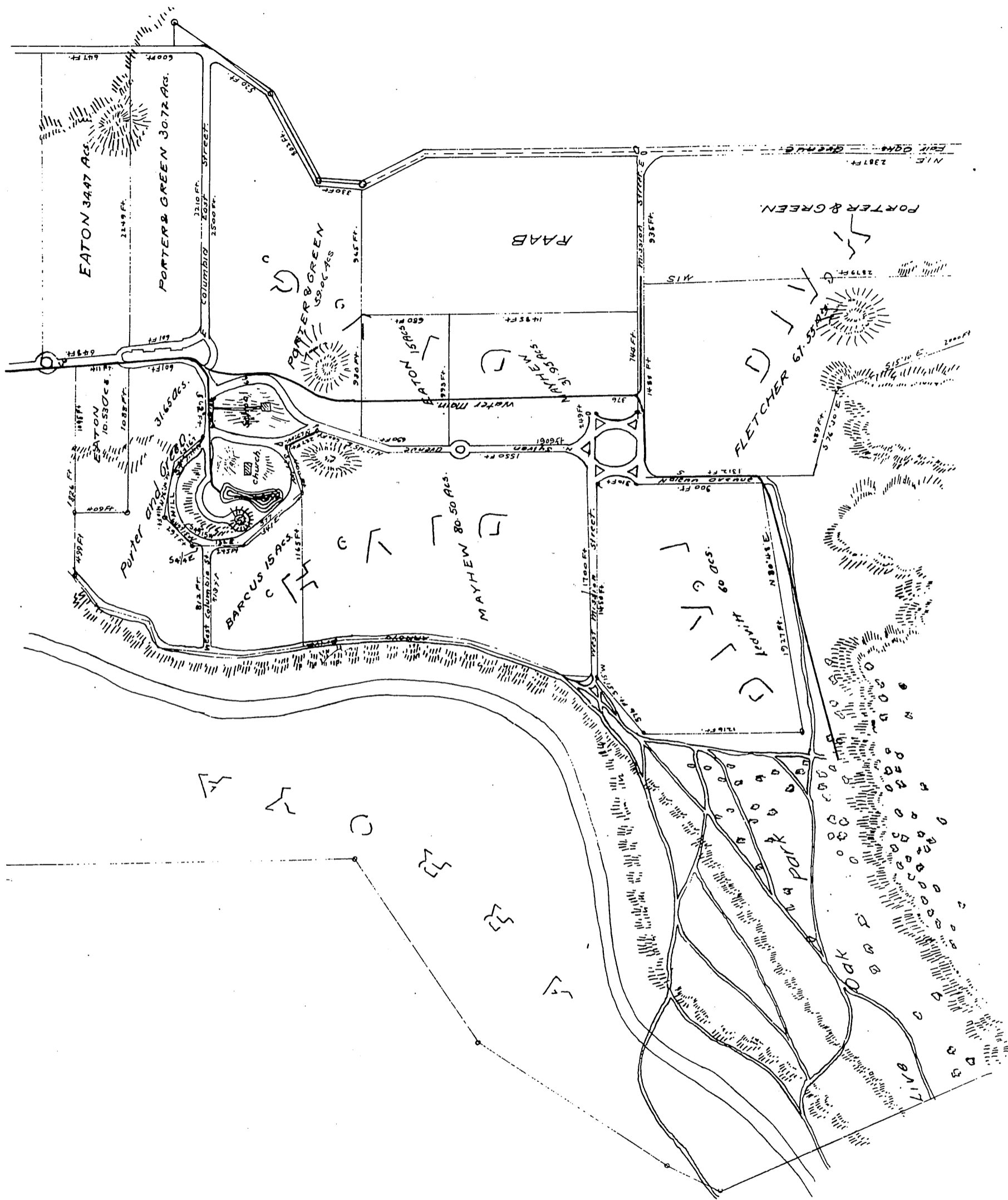
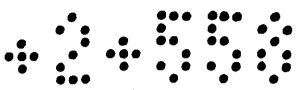
A
 MAP OF
 San Gabriel Orange Grove Assn.
 Lands
 LOS
 Angeles County
 1874.

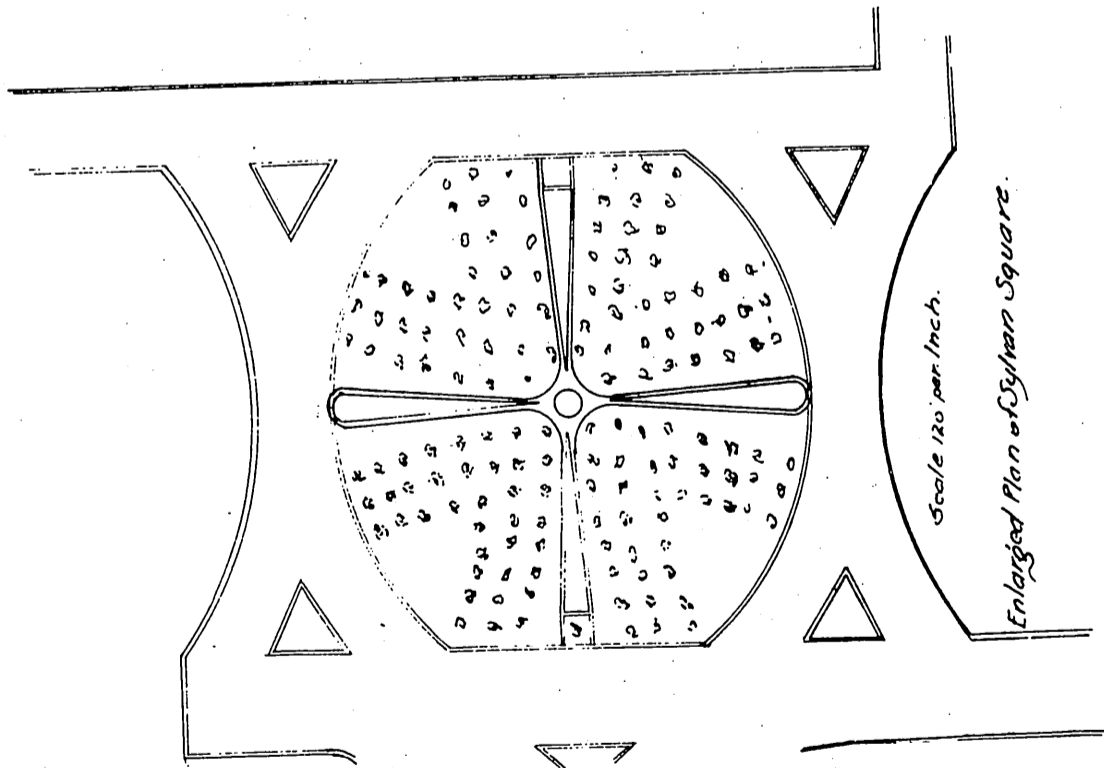
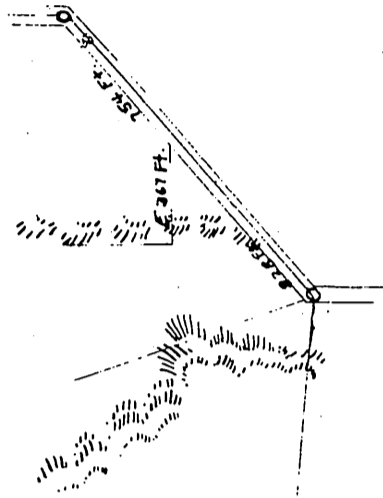




Enlarged Plan of Labyrinth.







I, certify this page and the 3 pages next preceding it to be and contain a full, true and correct copy (reduced to a one half scale.) of the Original Map of Lands of the San Gabriel Orange Grove Association, recorded June 25th 1874 at 5 min. past 4 P.M. by request of E. W. Berry Secretary of said Association.

J. W. Sillette County Recorder.