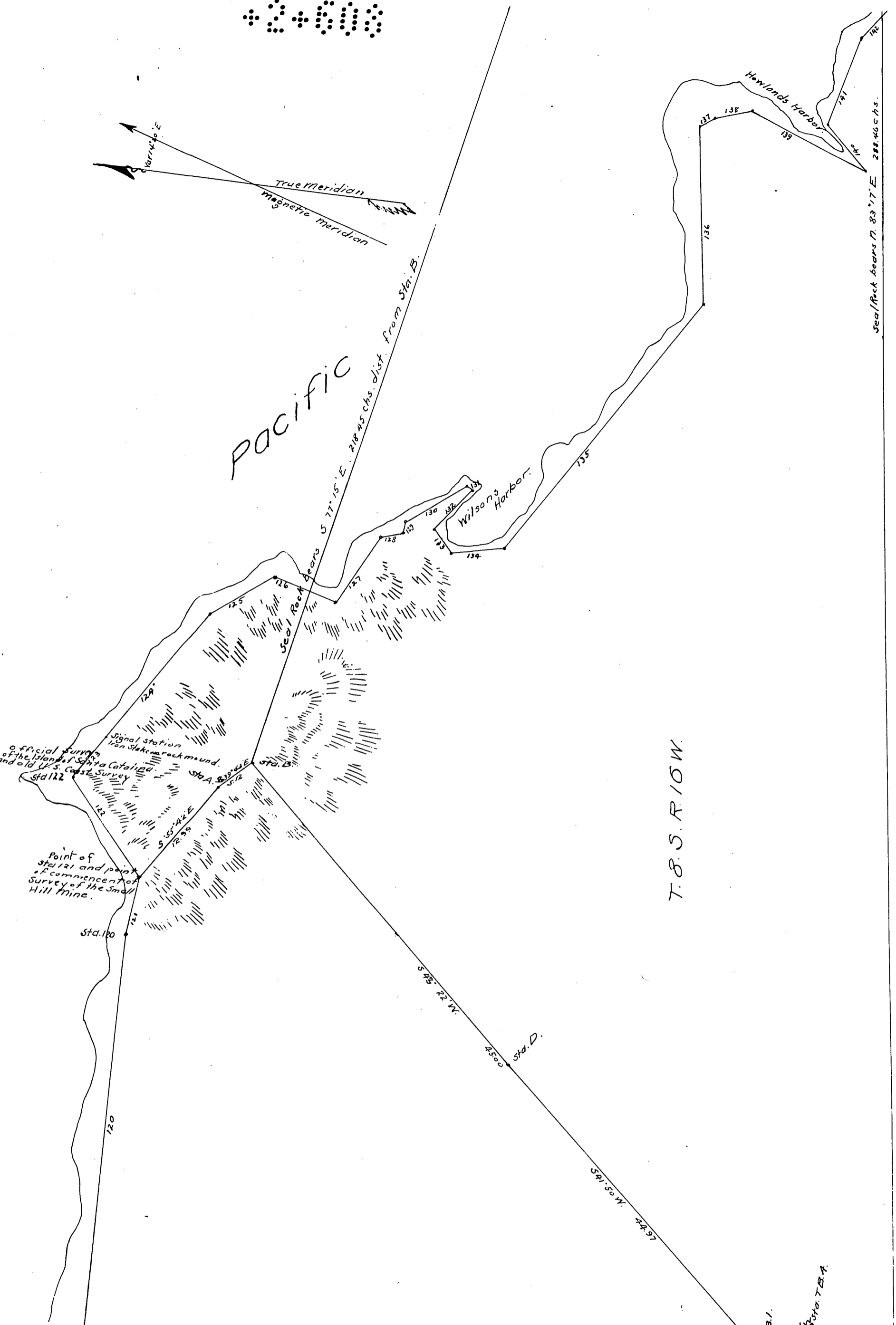


PACIFIC

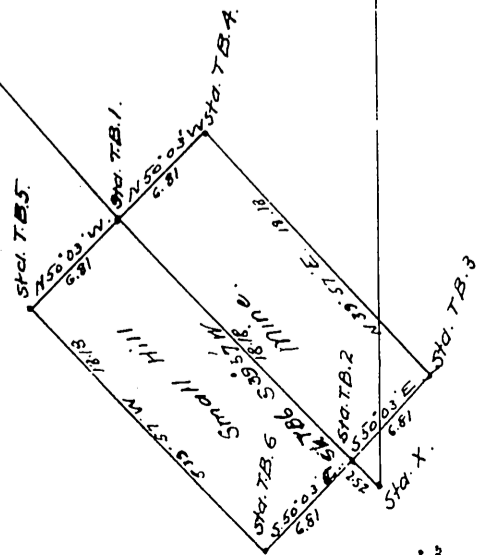


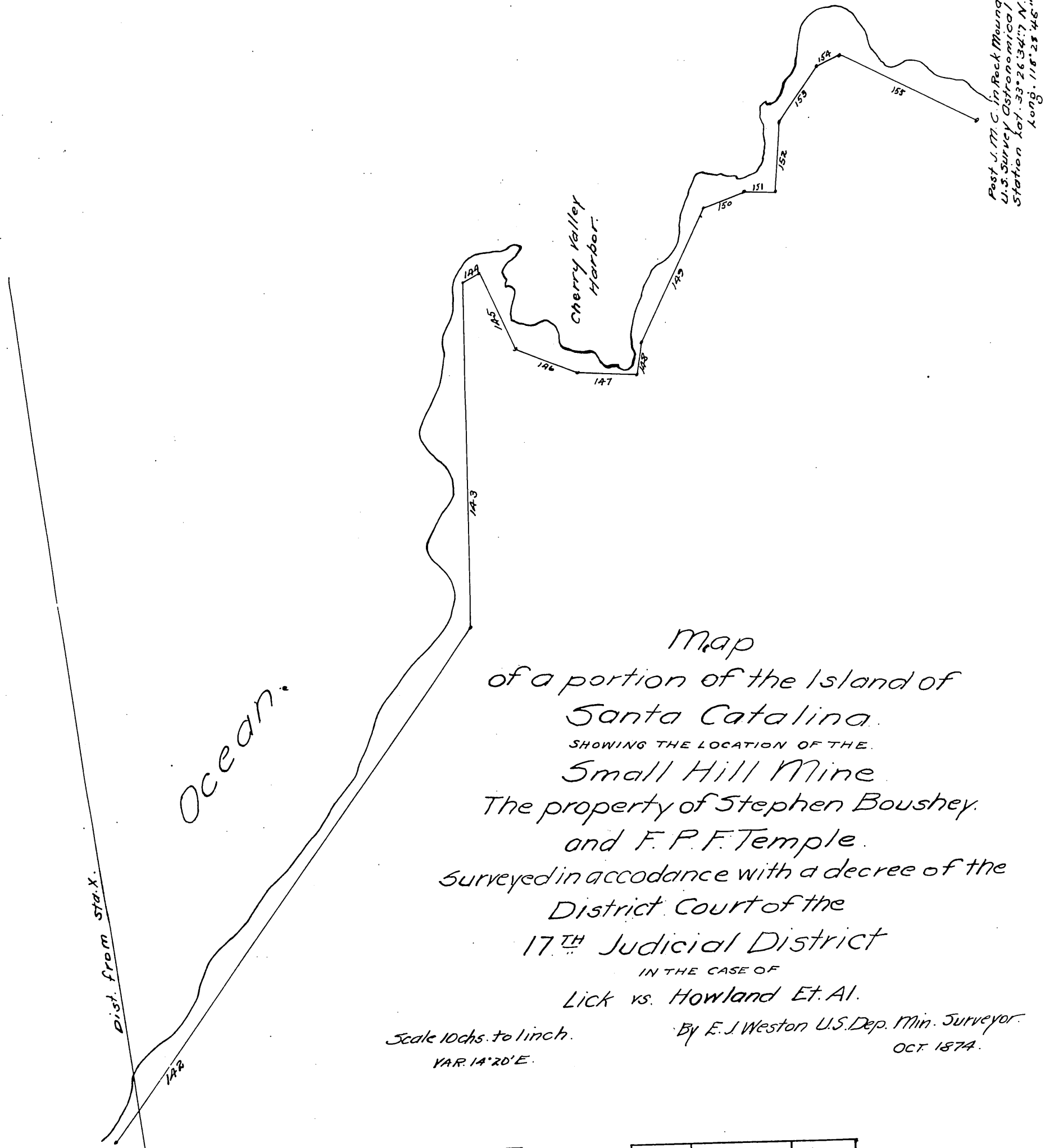
Official survey of the Island of Santa Catalina and old U.S. Coast Survey
Signal station on Steamer rock mound.
Point of Sta. 121 and point of commencement of Survey of the Small Hill Mine.
Sta. 122

Sea/Reck bears S 77° 15' E. 218.45 chs. dist. from Sta. B.

Sea/Reck bears N 72° 17' E. 288.46 chs.

T. S. R. I. O. W.





Map
of a portion of the Island of
Santa Catalina.
SHOWING THE LOCATION OF THE
Small Hill Mine
The property of Stephen Boushey
and F. P. F. Temple.
Surveyed in accordance with a decree of the
District Court of the
17th Judicial District
IN THE CASE OF
Lick vs. Howland Et Al.

Scale 10 chs. to inch.
VAR. 14° 20' E.

By E. J. Weston U.S. Dep. Min. Surveyor.
OCT. 1874.

Boundaries.		
No.	Course.	Dist.
120	N. 89° 15' E.	256.10
121	S. 83° 15' E.	6.30
122	N. 50° 30' E.	13.29
123	S. 58° 15' E.	5.19
124	S. 56° 15' E.	18.42
125	S. 37° E.	8.72
126	S. 14° 45' W.	7.80
127	S. 59° 15' E.	3.00
128	S. 29° 30' E.	3.00
129	S. 81° 15' E.	1.00
130	S. 34° E.	8.20
131	S. 38° W.	.50
132	N. 52° W.	6.11
133	S. 40° 15' W.	3.44
134	S. 11° 13' E.	6.00
135	S. 56° 30' E.	35.00

136	N. 83° 15' E.	20.00
137	S. 25° 45' E.	1.57
138	S. 15° E.	4.34
139	S. 5° 20' 45" W.	14.76
140	N. 45° 15' E.	6.57
141	S. 8° E.	10.35
142	S. 57° 15' E.	60.85
143	S. 89° 15' E.	32.62
144	S. 16° 15' E.	2.07
145	S. 66° W.	7.72
146	S. 23° 45' W.	6.56
147	S. 2° 45' W.	5.65
148	S. 79° 30' E.	2.77
149	S. 60° 30' E.	14.40
150	S. 14° 45' E.	4.04
151	S. 1° E.	2.92
152	S. 86° E.	6.32
153	S. 51° E.	7.00
154	S. 22° 45' E.	1.92
155	S. 27° 45' W.	15.27

A full, true and correct copy of the original,
Recorded November, 17th A.D. 1874 at 51 min past
10 A.M. at request of F. P. F. Temple.

J. W. Gillette Co. Recorder.
By F. R. Angell Deputy.